



**MOVE
ILLINOIS**

MOVE ILLINOIS
**QUARTERLY
MEETING**

MAY 13, 2019

WELCOME CHAIRMAN WILL EVANS



WELCOME EXECUTIVE DIRECTOR JOSÉ ALVAREZ



AGENDA

Move Illinois Update

Importance of Safety

Central Tri-State Project

How a Capital Program Affects Tolling

Diversity Update

Q&A Panel



2019 MOVE ILLINOIS STATUS



Since *Move Illinois* began, spent nearly **\$7 billion**



In 2019, work continues on **I-490 Tollway**
Central Tri-State



In 2019, anticipate advertising **50** construction contracts worth **\$1.3 billion**



ROADWAY

SAFETY

IT'S EVERYONE'S RESPONSIBILITY



**DRIVE LIKE
— — — — —
YOU WORK HERE**



**DROP IT
AND DRIVE**



**GIVE THEM
DISTANCE**



IT REALLY IS A MATTER OF
LIFE OR DEATH

ADVANCING WORK ZONE SAFETY

Follow maintenance of traffic

Be mindful entering/exiting work zones

Request trooper assistance as needed

Automated work zone speed detection



CENTRAL TRI-STATE TOLLWAY (I-294) PROGRESS

THROUGH APRIL 2019

25% corridor budget committed

49 construction and professional service contracts awarded

60% of corridor designed

PROJECT GOALS

95% of corridor designed by end of 2019

Flexibility to move projects forward

40% of corridor constructed by end of 2022

CENTRAL TRI-STATE TOLLWAY SCHEDULE

PROJECT LIMITS	2019	2020	2021	2022	2023	2024	2025	2026	
95th Street to LaGrange Road (4296)					█				
Mile Long Bridge (4221)	█								
75th Street to I-55 (4297)					█				
I-55 to Ogden Avenue (4298)				█					
BNSF (4222)	█								
Ogden Avenue to Cermak Toll Plaza (4265)				█					
Cermak Toll Plaza to St. Charles Road (4300)				█					
St. Charles Road to North Avenue (4301)			█						
North Avenue to Wolf Road (EOWA)	█		█						
Wolf Road to O'Hare Oasis (4302)	█								
O'Hare Oasis to Balmoral Avenue (4303)	█								
Permanent ITS (4308)			█						
Miscellaneous	█								

NOT FOR BID ADVERTISEMENTS

Keep the project on schedule

Provide extra time for complex projects

Foster competitive bidding

ANTICIPATED MATERIAL REQUIREMENTS

Composite pavement selection

Material needs ramp up to 2024

Anticipated needs

- Nearly 531,000 cubic yards of concrete
- Nearly 913,000 tons of asphalt
- Quantities for the Mile Long Bridge



ANTICIPATED LABOR REQUIREMENTS

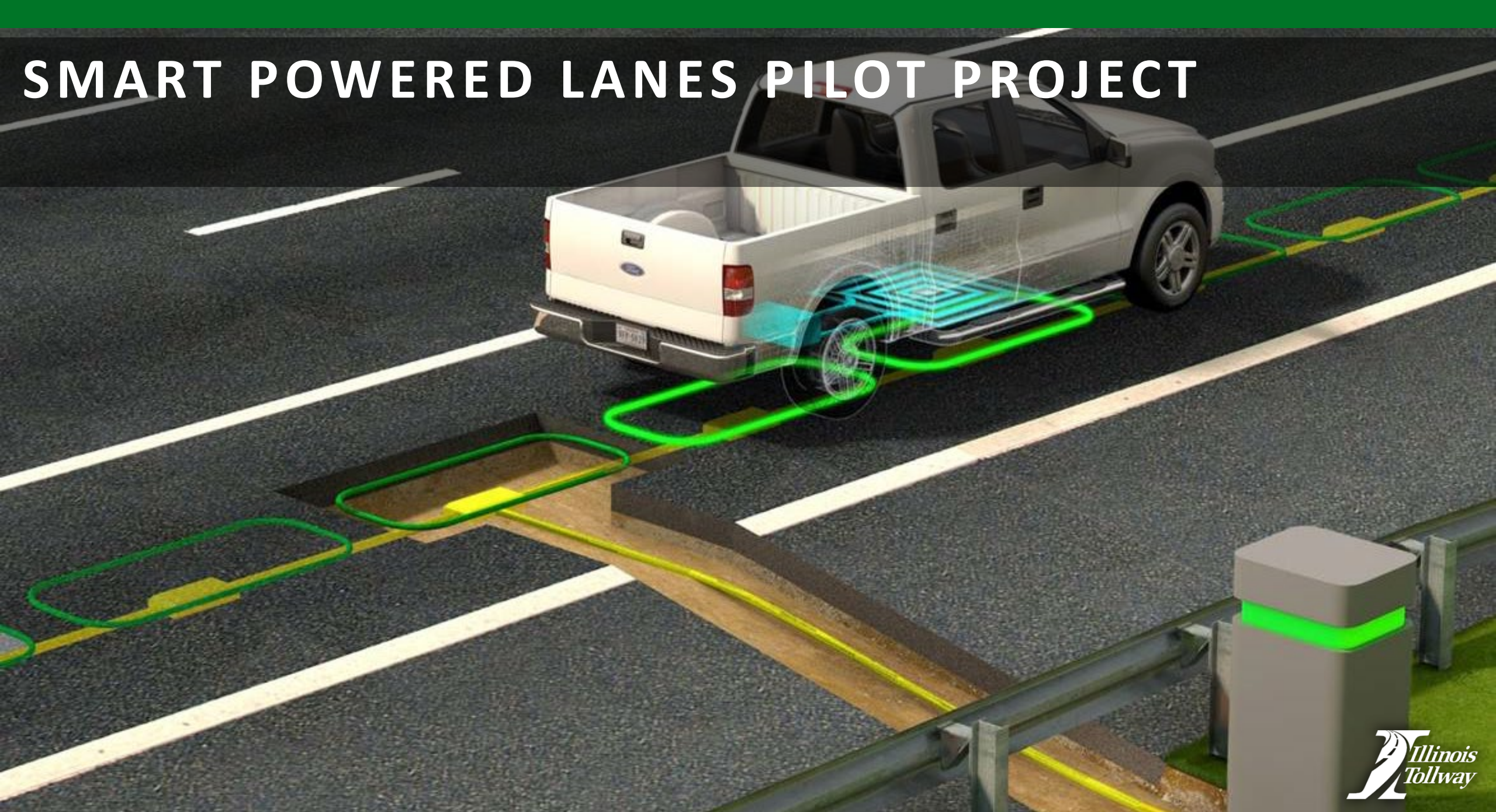
Ramp up to 2024

Top trades and estimated manpower:

TRADE	FTE 2024
Laborer	214
Operator	144
Iron worker	129
Electrician	120
Carpenter	37



SMART POWERED LANES PILOT PROJECT



MOVE ILLINOIS



CAPITAL PROGRAM AFFECTS ALL ASPECTS OF THE AGENCY

Need for **more power**

Need to **address increased volume**

Need to **adopt complex processing systems**



FINDING THE RIGHT SOLUTIONS

2011 TOLLING TECHNOLOGY MARKETPLACE SURVEY

Focused on...

Scalability

Flexibility

Transparency

Process:

Request for Information

7,000 requirements and detailed flow charts

Request for Proposals (qualifications-based)

Accenture Tolling Solution

FIRING ON ALL CYLINDERS

Expanding...



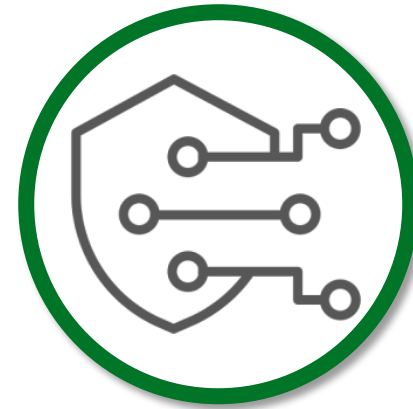
Revenues



Customer Service



Transparency



Security



EXPANDED REVENUES

- New toll plazas, new cameras and new ATPMs
- Full transaction lifecycle integrity, with full monitoring and alarms
- Improved file format and file management with third-parties
- Long-awaited new business rules
- Separate and robust testing and training environments





EXPANDED CUSTOMER SERVICE

Improvements

- Modern website for improved self-service
- Automation of emails and robocalls
- Temporary license plate capability
- Online search-by-plate functionality
- Expanded correspondence
- Case management capability to prevent human error





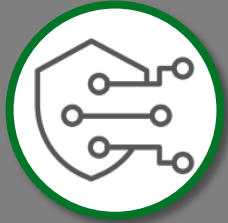
EXPANDED TRANSPARENCY

Full transaction lifecycle integrity

Expanded account correspondence records

Data integrity between tables

Robust reporting capability



EXPANDED SECURITY

- Tokenized credit card data
- PIN pads for credit card transactions
- Audit trail of transactions and account access
- Modern password and access management
- 24/7 robust monitoring
- Predictable and robust patching and release schedules



COST STABILITY

Even with tremendous expansion and enhancement, the **Tollway's cost per transaction has remained stable**

-
- Growth in transaction volume
 - Reduction in leakage
 - Faster introduction of new revenue programs
 - Automation of previously manual processes
- Improved self-service capacity
 - State contracts for infrastructure
 - Modular storage

LESSONS LEARNED

- ✓ Prepare stakeholders for the active, 24/7 support of a modern system
- ✓ Size the infrastructure, but round up
- ✓ Size the network, but round up
- ✓ Prepare for constant patches and releases related to security
- ✓ Carefully prepare customers for online security changes
- ✓ Carefully message the value being delivered

CONTINUED COMMITMENT TO DIVERSITY



STRENGTHENING DIVERSITY THROUGH INCLUSION



Access

- 465 D/M/WBE and veteran-owned firms associated with *Move Illinois*
- Nearly 390 Earned Credit Program (ECP) hires since 2005
- 18 ConstructionWorks provider locations offer access to workforce training



Participation

- \$1.9 billion committed to small, diverse and veteran firms since the start of *Move Illinois*
- \$111.5 million paid to certified veteran-owned businesses since 2015
- Nearly 45% minority workforce on Tollway construction projects



Advancement

- Nearly 470 unique businesses served by Technical Assistance
- 154 Partnering for Growth agreements



DIVERSITY PROGRAMS

PROFESSIONAL SERVICES

Disadvantages Business Enterprise Program
Partnership for Growth – Professional Services
Veteran Business Program

CONSTRUCTION

ConstructionWorks
Disadvantages Business Enterprise Program
Earned Credit Program
Equal Employment Opportunities Program
Job Order Contracting
Partnering for Growth – Construction
Small Business Initiative
Technical Assistance
Veteran Business Program

CONSTRUCTIONWORKS PROGRAM

TEACHING TRADES, BUILDING CAREERS

Benefits for Contractors

- Access to skilled workers
- Diversity your workforce
- Earn bid credits
- Increase chances of winning contracts
- Marketing edge for subcontractors
- Pre-screened and trained candidates
- Receive cash incentives

Variety of Skilled Workers Available

Ready for the heavy highway construction industry



Equipment Operators



Iron Workers



Carpenters



Cement Masons



Electricians



Laborers

PARTNERING FOR GROWTH PROGRAM

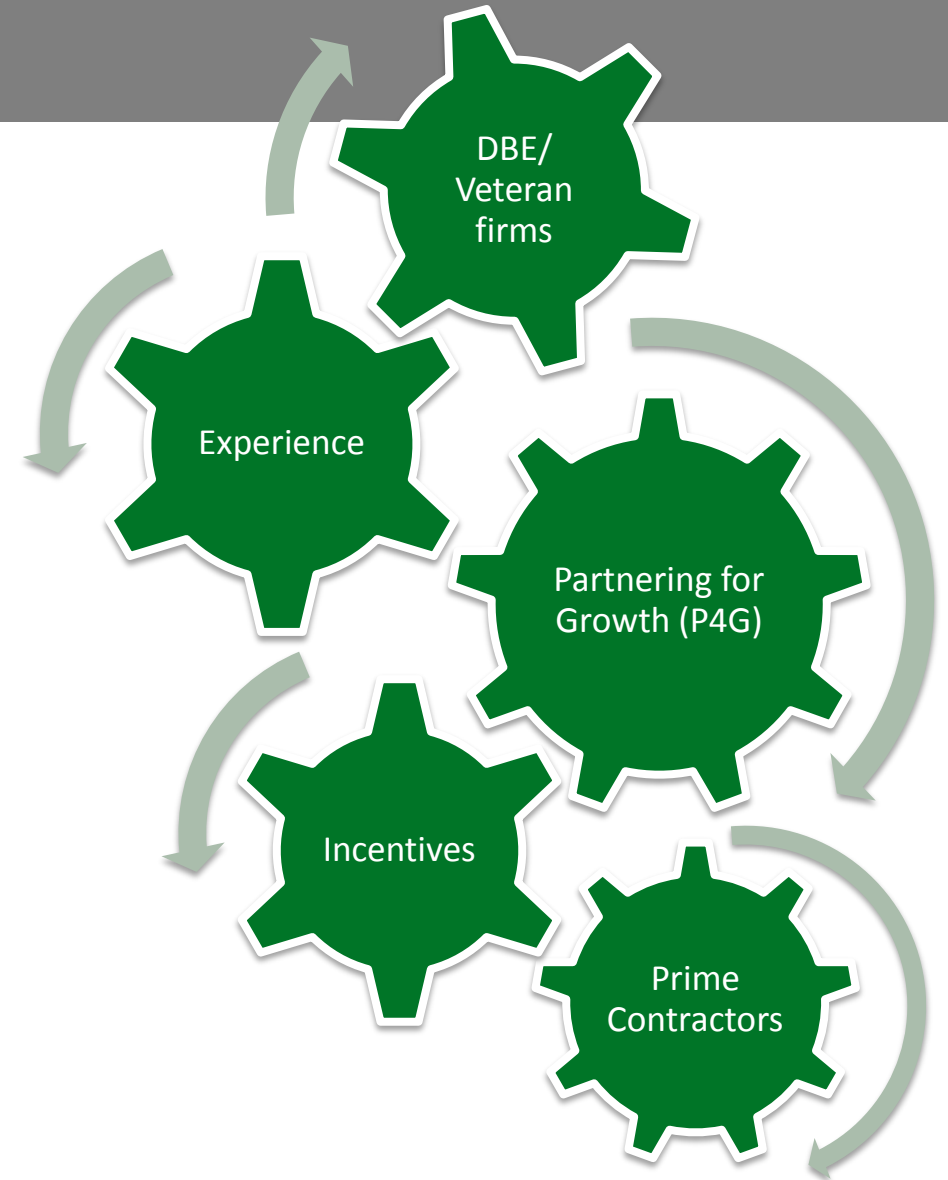
YOU CAN DO IT!

Program Simplicity

- Templates are available online
- Agreements are possible with current subs
- Mentors may incorporate protégés into existing training programs

Benefits and Incentives

- Prime contractors earn bid credits
- Prime consultants earn DBE credit
- Protégé firms gain experience necessary to grow and succeed
- Increases pool of experienced contractors and consultants ready to perform on Tollway projects
- Supports existing Diversity programs



Q&A PANEL

Join at
[Slido.com](https://www.slido.com)
[#MIQ519](https://www.slido.com/join/MIQ519)

What's the status of the railroad agreement?

When will the next PSB be available?

Is the Tollway going to take over I-80?





**MOVE
ILLINOIS**

THANK YOU

