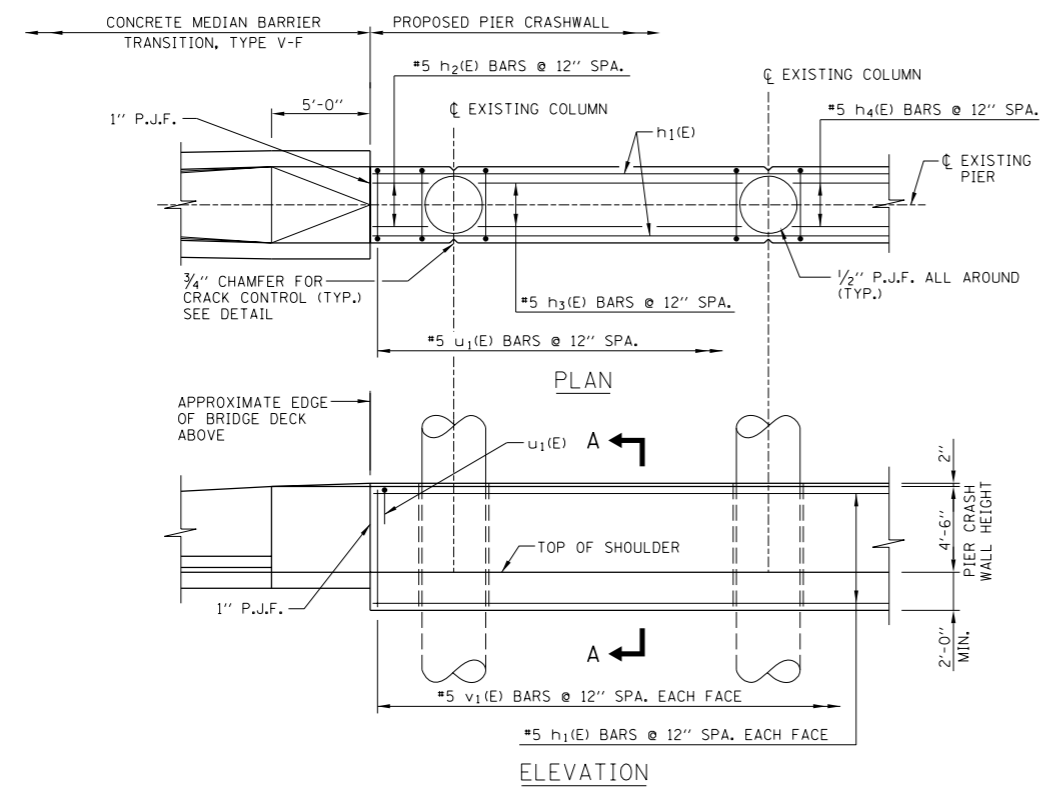
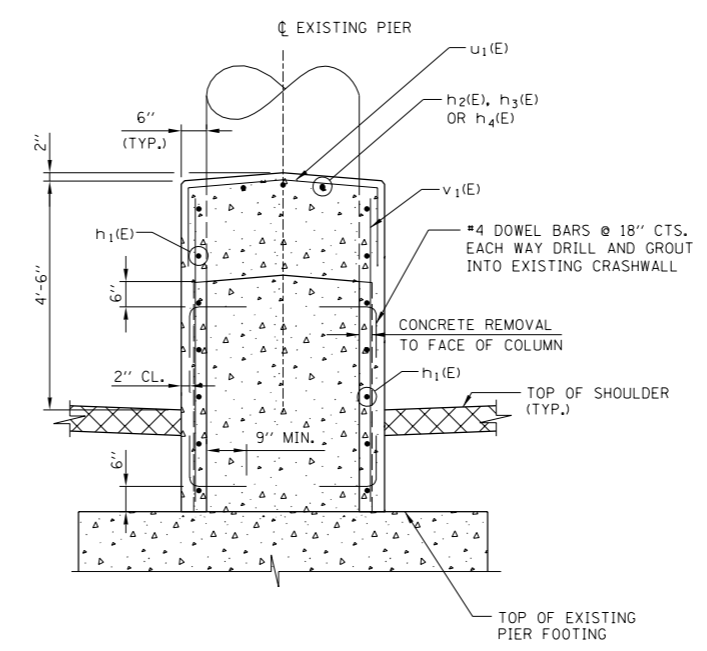


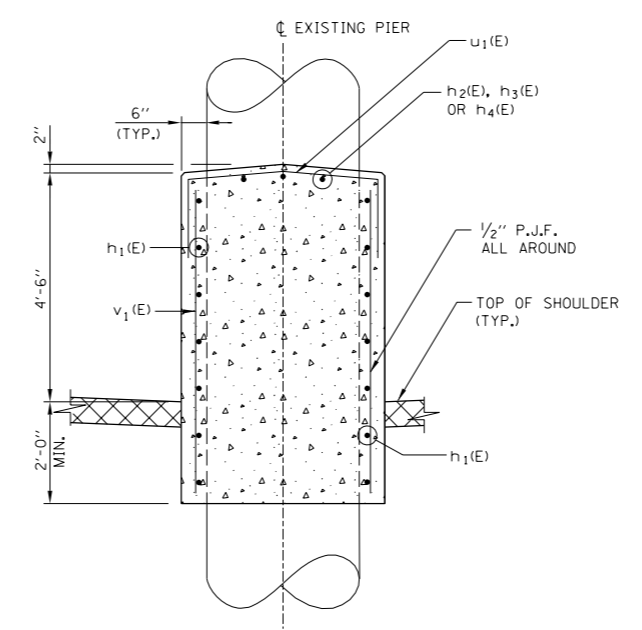
PROTECTION FOR EXISTING MEDIAN PIER WITH CRASH WALL



PROTECTION FOR EXISTING MEDIAN PIER WITHOUT CRASH WALL



SECTION B-B



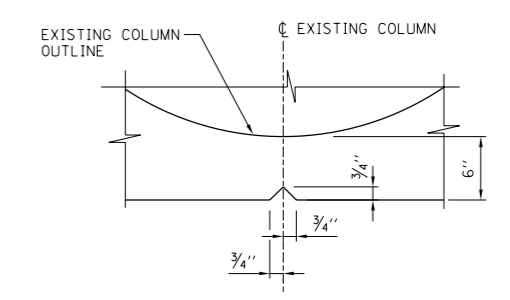
SECTION A-A

NOTES:

1. REMOVE EXISTING CONCRETE CRASHWALL BACK TO FACE OF COLUMNS PRIOR TO PLACING CONCRETE AROUND EXISTING CRASHWALL AND COLUMNS. SURFACES TO RECEIVE NEW CONCRETE SHALL BE BLAST CLEANED. COST OF CLEANING SHALL BE INCIDENTAL TO CONCRETE REMOVAL.
2. CONCRETE MEDIAN BARRIER TRANSITION TAPER LENGTHS, PAY LIMITS AND MEASUREMENT, AND BASIS OF PAYMENT ALL IN ACCORDANCE WITH THE STANDARD SPECIFICATIONS.
3. THE CLEAR COVER FOR REINFORCEMENT BARS TO THE SURFACE OF CONCRETE SHALL BE 2" UNLESS OTHERWISE SHOWN.
4. REINFORCING BARS DESIGNATED "E" SHALL BE EPOXY COATED.
5. EXPOSED CONCRETE EDGES SHALL HAVE 3/4"x45° CHAMFERS. CHAMFERS ON VERTICAL EDGES SHALL BE CONTINUED A MINIMUM OF ONE FOOT BELOW FINISHED GROUND LEVEL.

NOTE TO DSE

THIS BASE SHEET SHOWS TYPICAL NEW CONSTRUCTION BUT IT IS NOT A STANDARD DRAWING. IT REQUIRES COMPLETION BY THE DSE PRIOR TO INSERTION INTO A CONTRACT. MICROSTATION FILES ARE CONTAINED W/IN THE ICAPP MANUAL RESOURCE CD OR AVAILABLE FROM THE AUTHORITY. THE DSE SHALL ACCEPT THE RESPONSIBILITY OF THE DESIGN OF THIS SHEET UPON ITS COMPLETION & INSERTION INTO A CONTRACT. THIS "NOTE TO DSE" SHALL BE REMOVED BY THE DSE PRIOR TO INSERTION OF THE SHEET INTO THE PLAN SET.



CRACK CONTROL DETAIL

LEGEND

- CONCRETE REMOVAL
- NEW CONCRETE
- BITUMINOUS SHOULDER

APPROVED: *Jeff Daley*
 CHIEF ENGINEER
 DATE 6-14-2006

Illinois Tollway
 Open Roads for a Faster Future

CRASH WALL MODIFICATIONS

DATE 5-12-2005 STANDARD NO. BASE SHEET