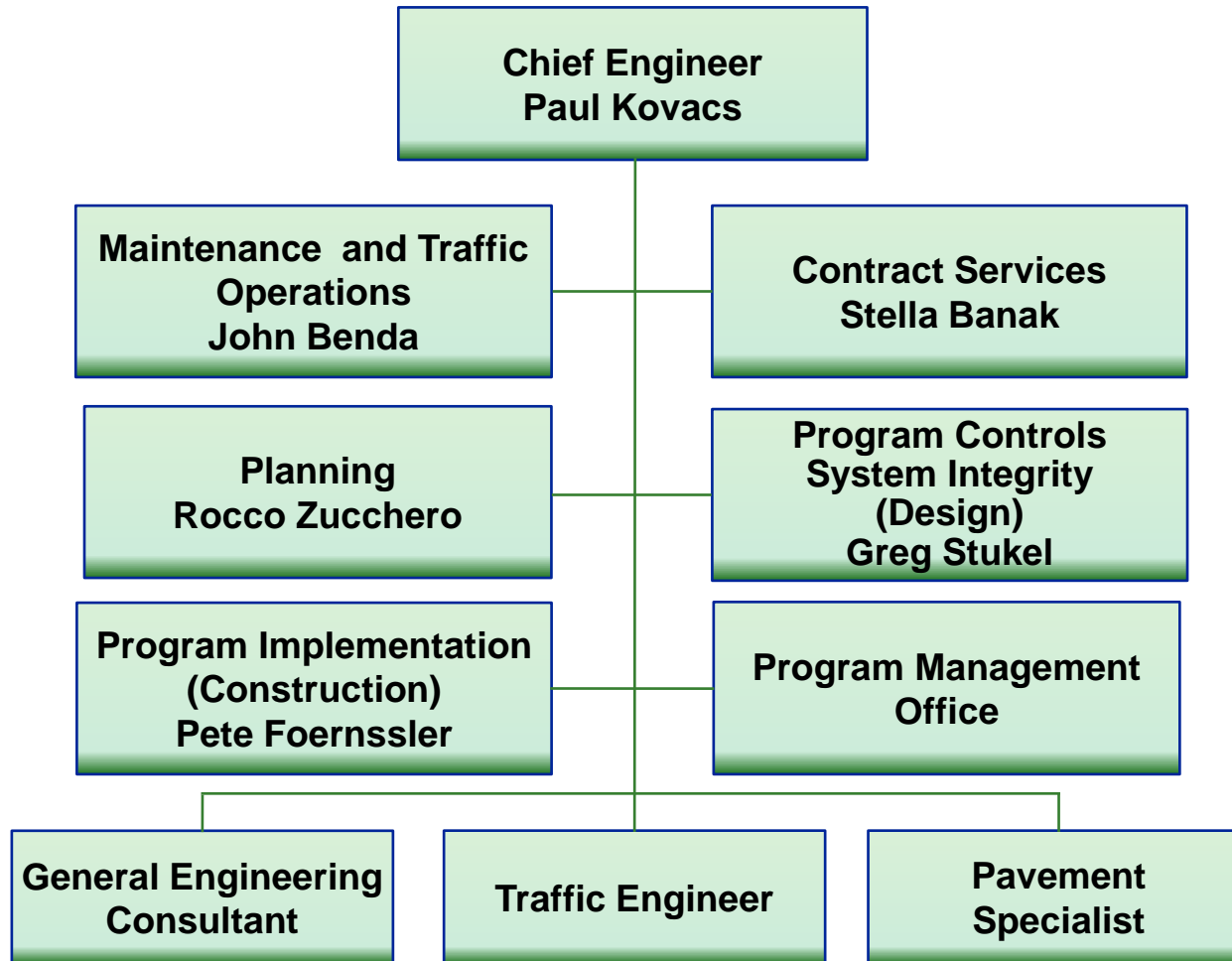




Engineering Department Overview

November 2011

Engineering Department



Key Professional Engineering Support Services

- Program Management Office – HNTB
 - 2012 Fee is \$8.4M
 - PMO Fee is 1.4 percent of Capital Program Costs
 - Varies from 3.5 percent to 5 percent nationally
- General Engineering Consultant – AECOM
 - 2012 Fee is \$8.2M
 - Fee is 12.6 percent of Engineering's Annual Budget
- Traffic Engineer – WSA
 - 2012 Fee is \$3.5M
 - Fee is 5.4 percent of Engineering's Annual Budget
- Pavement Specialist - ARA
 - 2012 Fee is \$2.6M
 - Fee is 4.0 percent of Engineering's Annual Budget



Other Contract Services

Professional Engineering Services

- Design section engineers
- Construction managers
- Design and construction corridor managers
- Surveys, geotechnical, materials testing and ITS support
- 98 consultants and 165 subconsultants

Construction

- Heavy highway
- Facilities, striping, signing, landscaping, etc.
- 71 contractors and 533 subcontractors



Engineering Board Agenda Items

- Construction contract awards - 227 projects
 - Value to date of awards is \$3.94 B; 67.7 percent of program cost
- Professional service contract awards – 264 projects
 - Value to date of awards is \$781.7 M; 13.4 percent of program cost
- Professional service supplements and renewals
 - 205 Design & Construction Management Contracts - \$591M
 - 105 Design & Construction Management Supplements - \$63M
- Construction change orders and extra work orders in excess of \$200,000
 - 12,524 construction contract changes were executed in the amount of \$9.1M; this is .5 percent of completed contracts
- Partial and final release of retainage on construction contracts
- Land Management and Acquisition



THANK YOU

