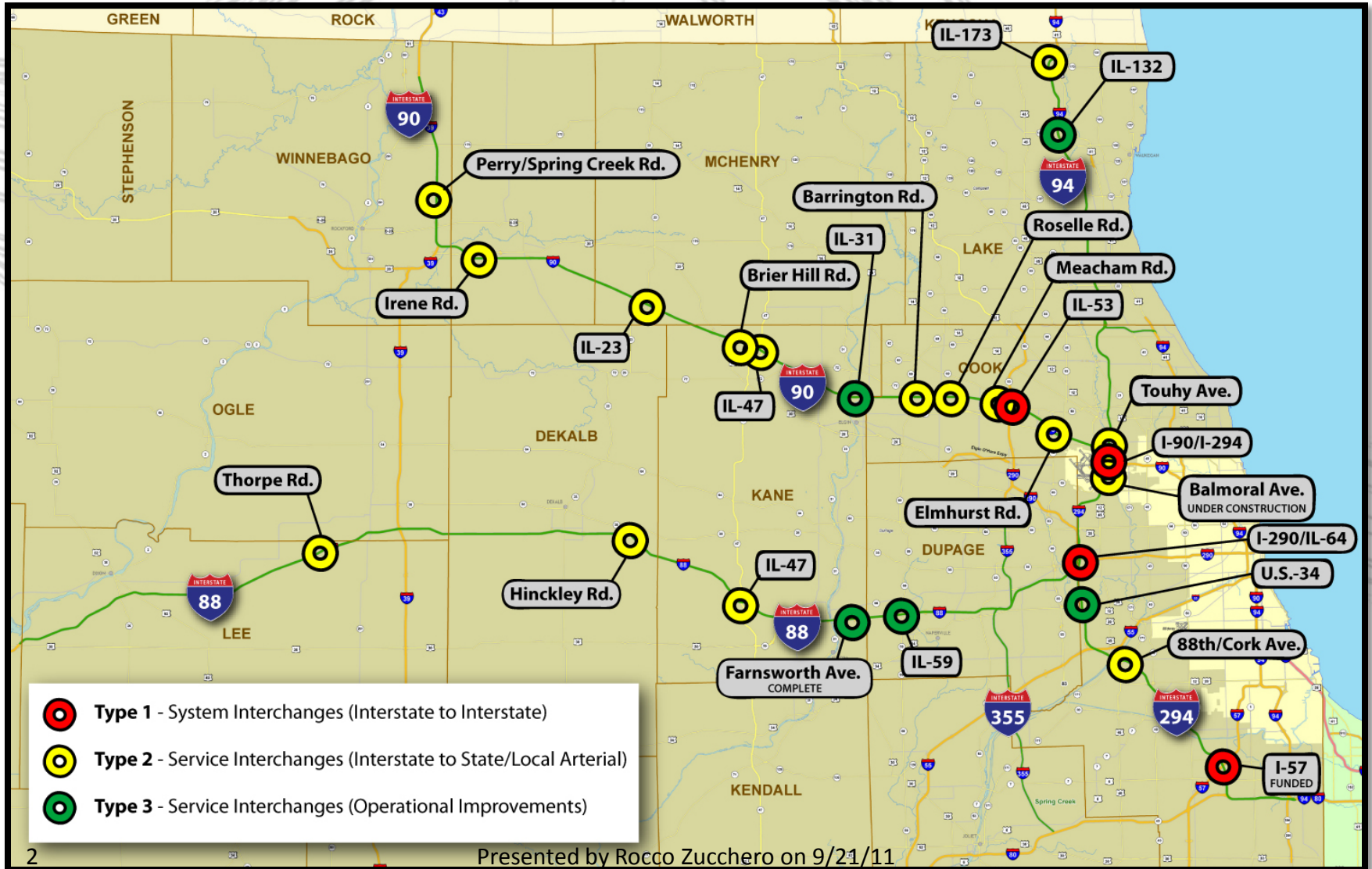




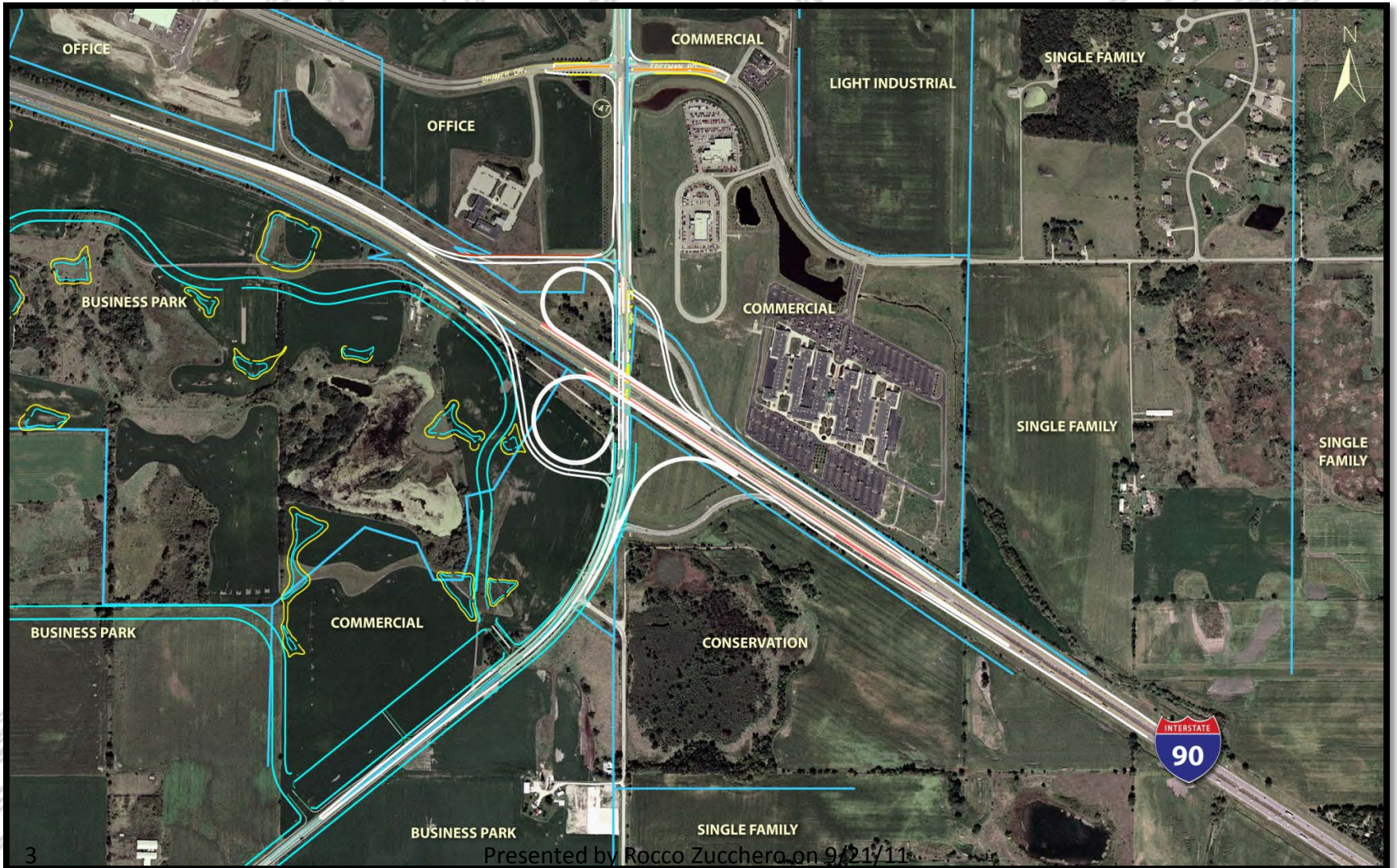
**Jane Addams Memorial Tollway (I-90) at Illinois Route 47**  
**Strategic Planning Committee**  
*September 21, 2011*

# Potential Future Interchange Projects





# I-90/Illinois Route 47 Interchange







Huntley  
Auto Tech

Proposed  
Centegra  
Hospital

Route 47 Widening  
complete by Oct 2011

Deer Path  
Supportive  
Living Facility

Goodwill

FYH USA

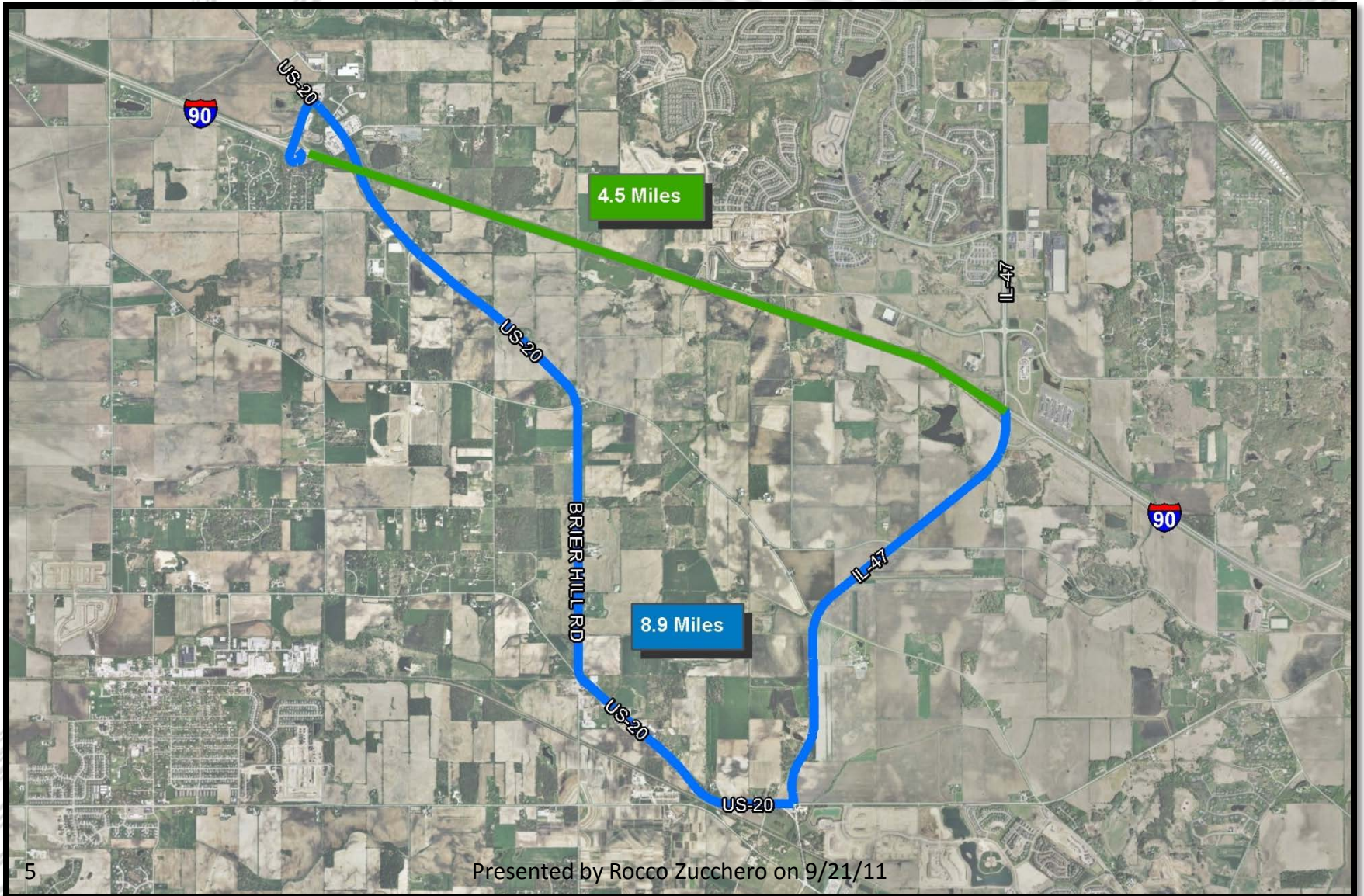
Full Interchange  
anticipated to go to  
bid in March 2012

General RV

- **General RV** 30,000 SF RV dealership at Auto Mall
- **Deer Path Supportive Living:** 128 bed Supportive Living Facility (VB approved, in building permit process)
- **Huntley Auto Tech Center,** 8208 SF automotive repair facility (VB approved, new construction)
- **Goodwill Store,** 15,000 SF (VB approved, new construction)
- **Centegra Hospital-Huntley,** 128 bed full service hospital (currently requesting Certificate of Need)
- **FYH USA,** 40,000 SF industrial distribution center (new construction)



# Operational and Freight Benefits



# Project Cost and Projected Revenues

## Project Cost Estimate

Construction:	\$44,744,300
Construction Engineering:	\$4,450,400
Preliminary and Design Engineering (by locals)	\$2,488,500
Utility Relocation:	\$3,085,500
Right-of-Way:	\$13,340,000
Wetland Mitigation:	\$515,000
Toll Equipment:	\$1,144,200
<b>TOTAL PROJECT COST:</b>	<b>\$69,767,900</b>
<b>WSA Projected Annual Net Revenue (2014):</b>	<b>\$3,000,000</b>
<b>Additional annual Operations and Maintenance Cost:</b>	<b>\$183,000</b>





# Intergovernmental Agreement

## Financial Responsibilities

- **Tollway:** 50 percent
- **IDOT:** 25 percent
- **Village of Huntley:** 10 percent
- **Kane County:** 8.5 percent
- **McHenry County:** 6.5 percent

# Next Steps

- Finalize Intergovernmental Agreement
- Complete contract plans – December 2011
- Tollway to seek bids – winter 2011/2012
- Construction target start – spring 2012
- Completion – December 2013





---

**THANK YOU**