

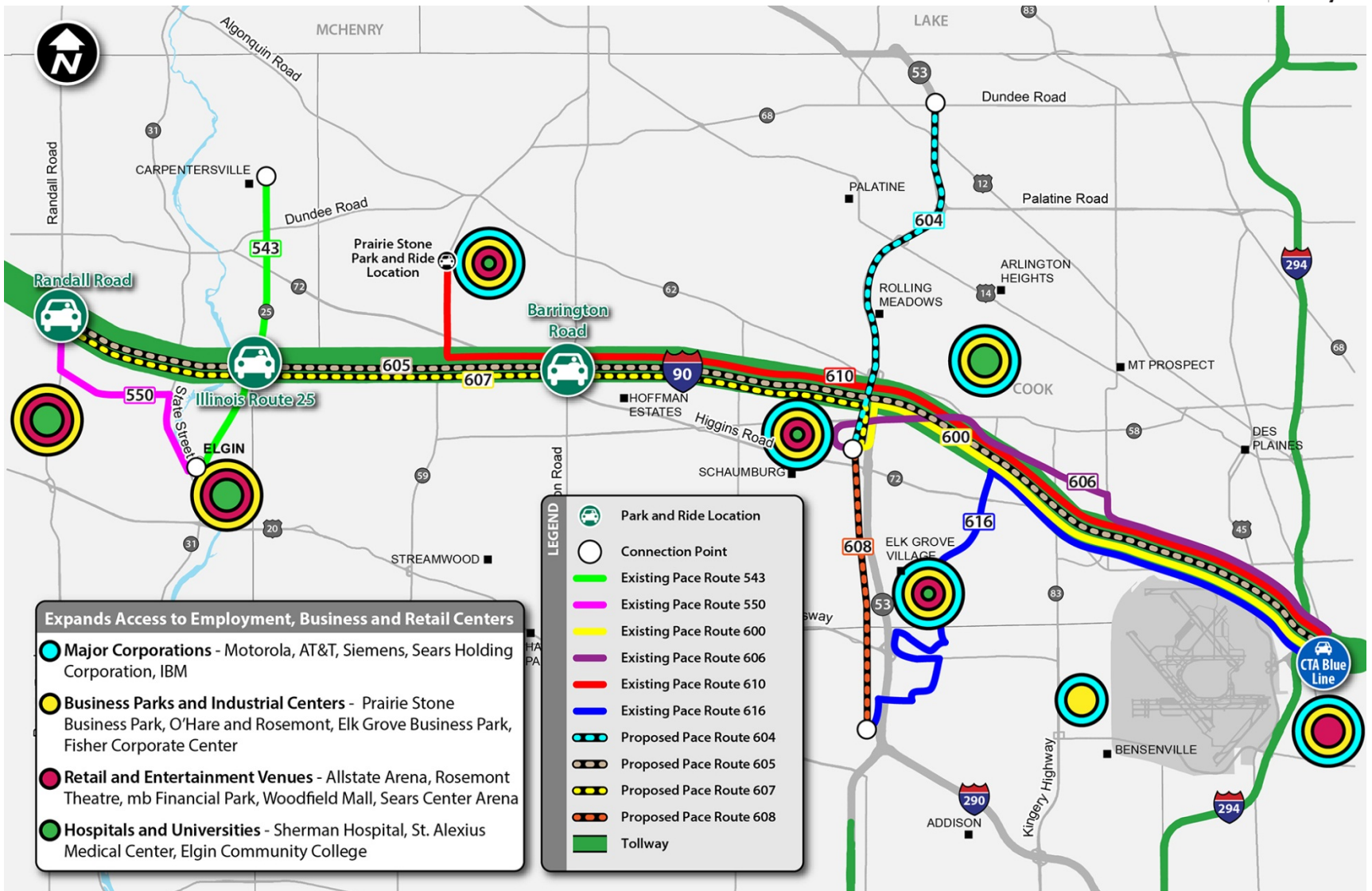
Jane Addams Memorial Tollway (I-90) Transit Update

July 24, 2014

Agenda

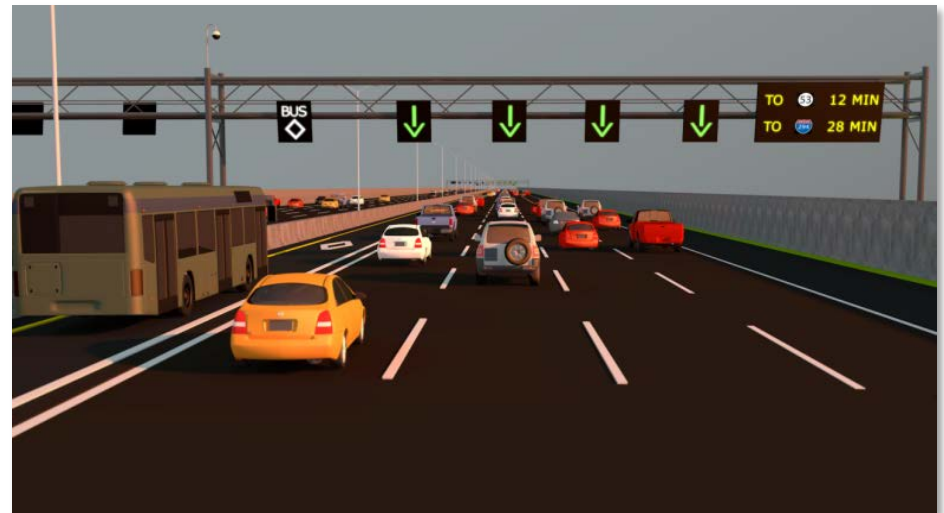
- ▶ **Collaborative I-90 transit accommodations**
 - ▶ Active traffic management (ATM) benefits to transit
 - ▶ Pace Park & Ride concepts
 - ▶ Intergovernmental agreement with Pace
 - ▶ Access improvements at River Road Station (Tollway study)
 - ▶ Rosemont Transit Center Study (RTA study)
- ▶ **Pace I-90 Transit Market Expansion Project overview**
- ▶ **Next steps**

Transit Along I-90 Corridor

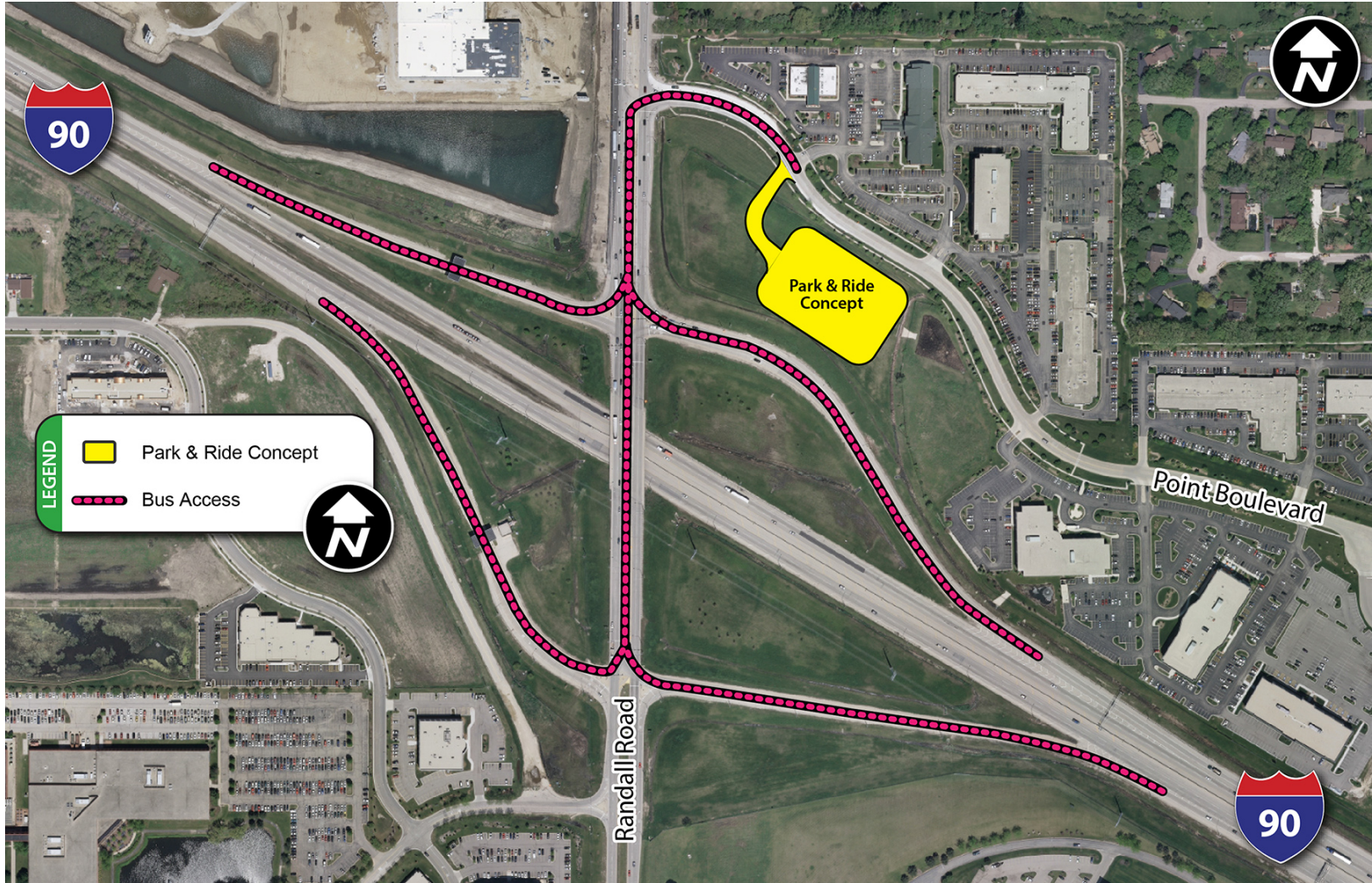


ATM Benefits to Transit

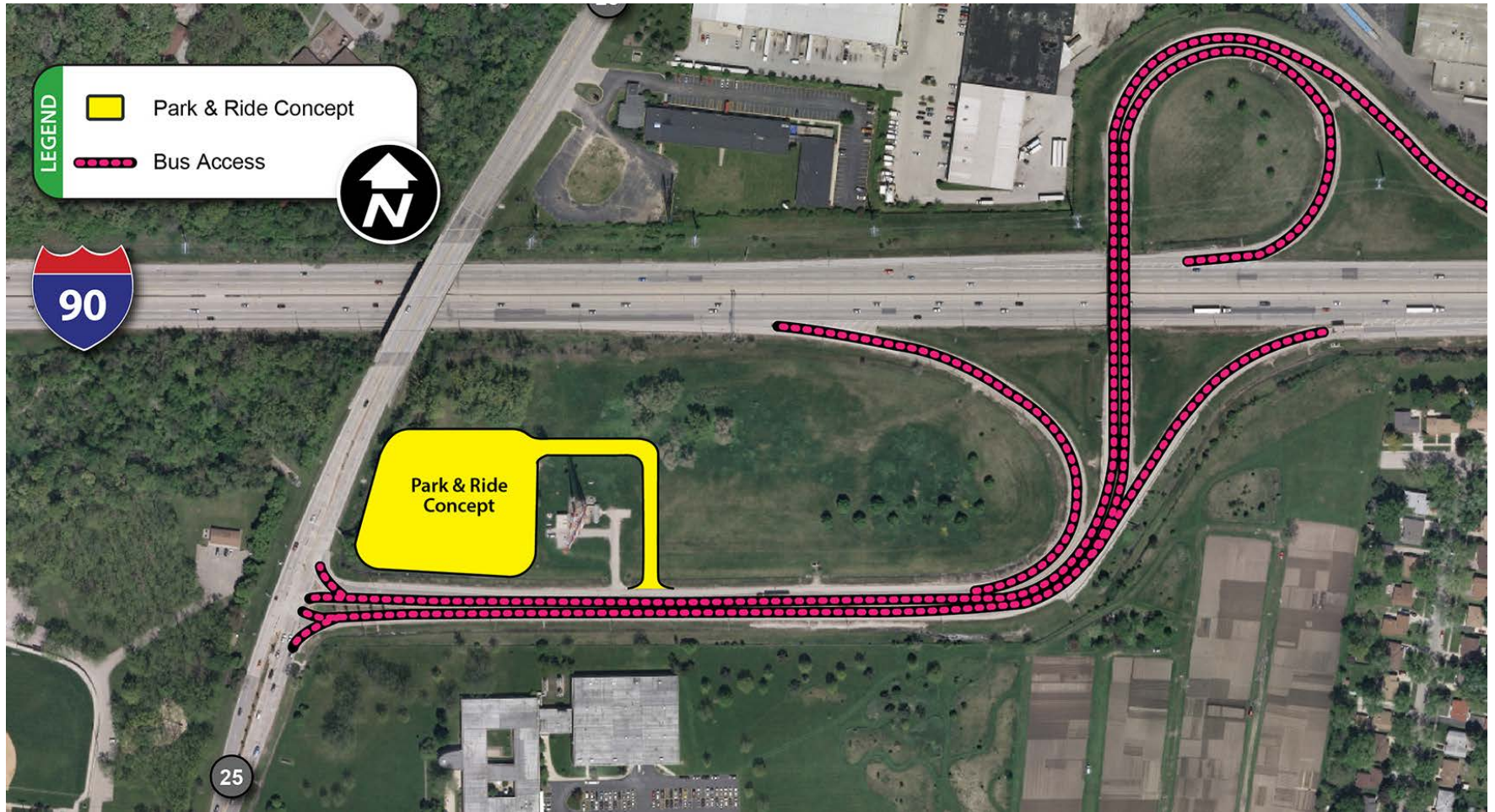
- ▶ **High-tech gantries provide real-time information**
 - ▶ Manage use of lanes and shoulder
 - ▶ Advance warning of incidents ahead
- ▶ **ATM fosters communication (in concept)**
 - ▶ Real-time travel times to destinations
 - ▶ Availability of parking spaces at next Park & Ride
 - ▶ Next bus arrival and departure information



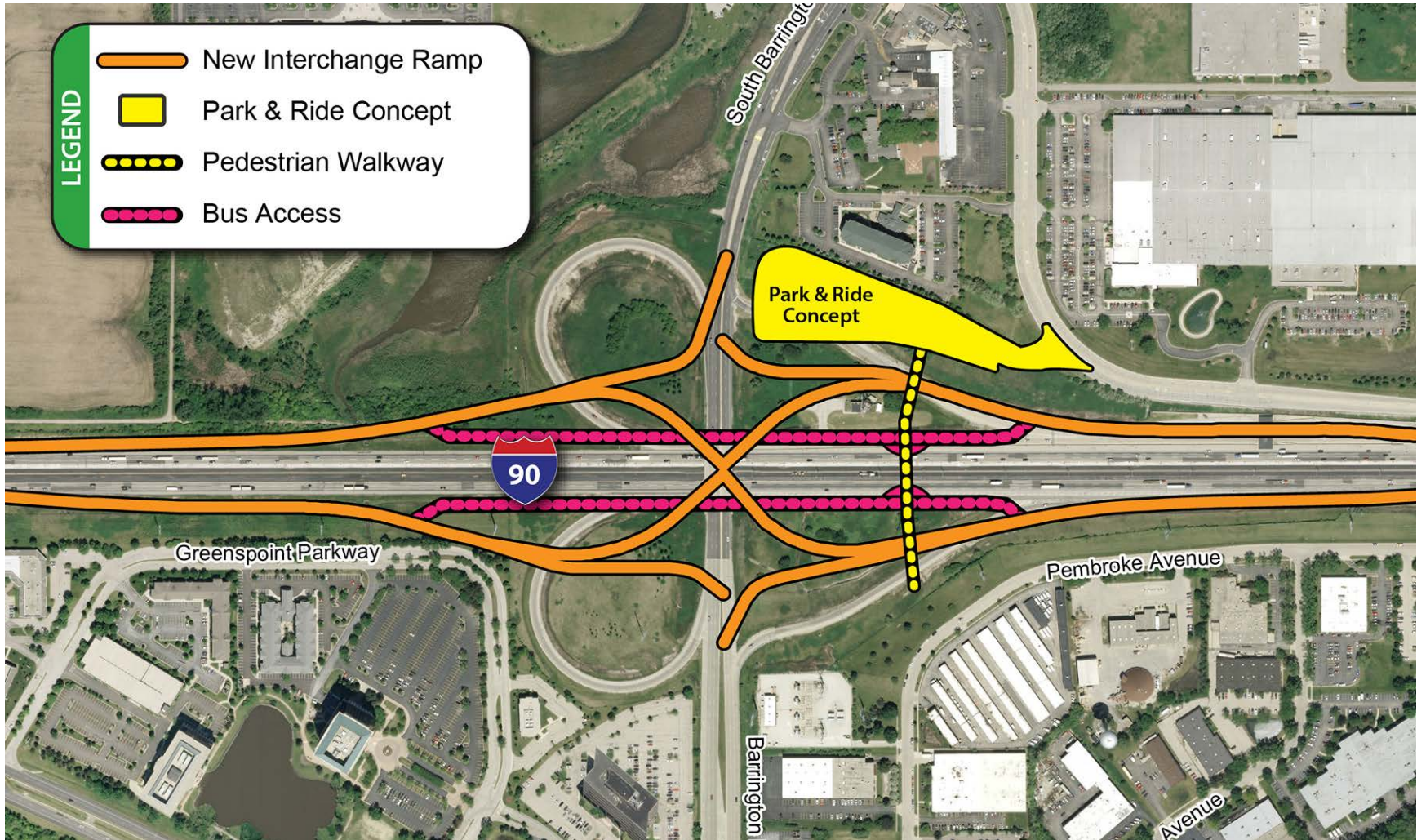
Randall Road Park & Ride Concept



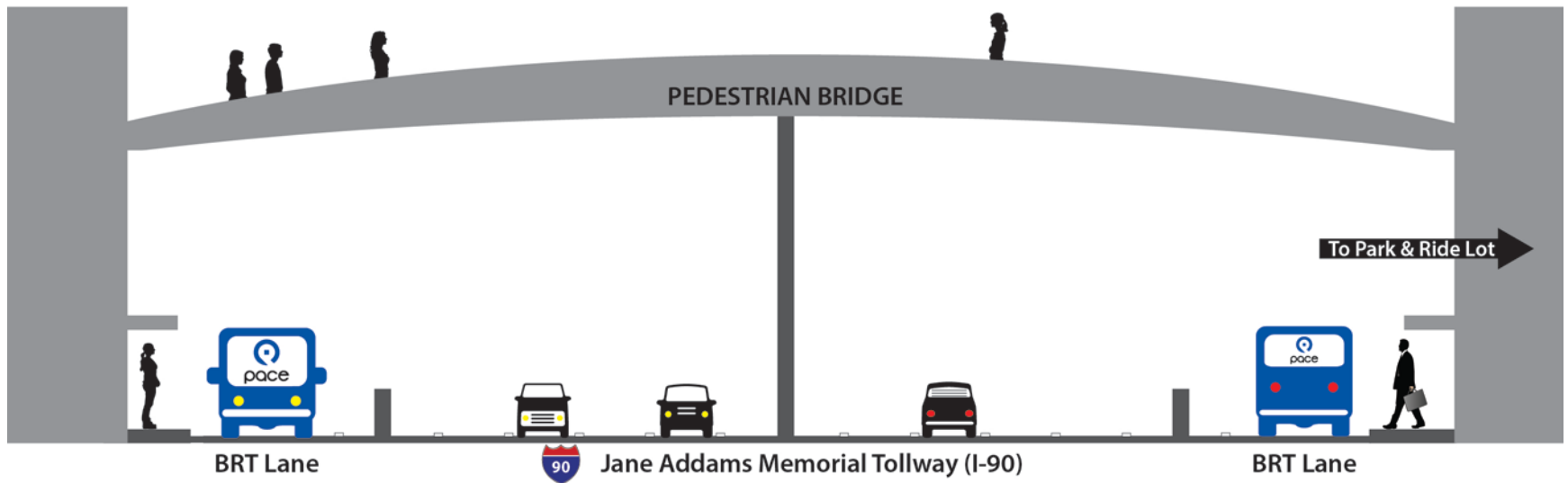
Illinois Route 25 Park & Ride Concept



Barrington Road Park & Ride Concept



Barrington Road Pedestrian Bridge Concept



Intergovernmental Agreement Overview

- ▶ **Allows for use of Tollway land**
 - ▶ Permit for each site – no transfer of land
 - ▶ 25-year term with renewal option
- ▶ **Design and construction**
 - ▶ Pace responsible for design and construction
 - ▶ Tollway review and approval
- ▶ **Maintenance and liability responsibilities defined**
 - ▶ Provisions for Pace reciprocal maintenance agreement



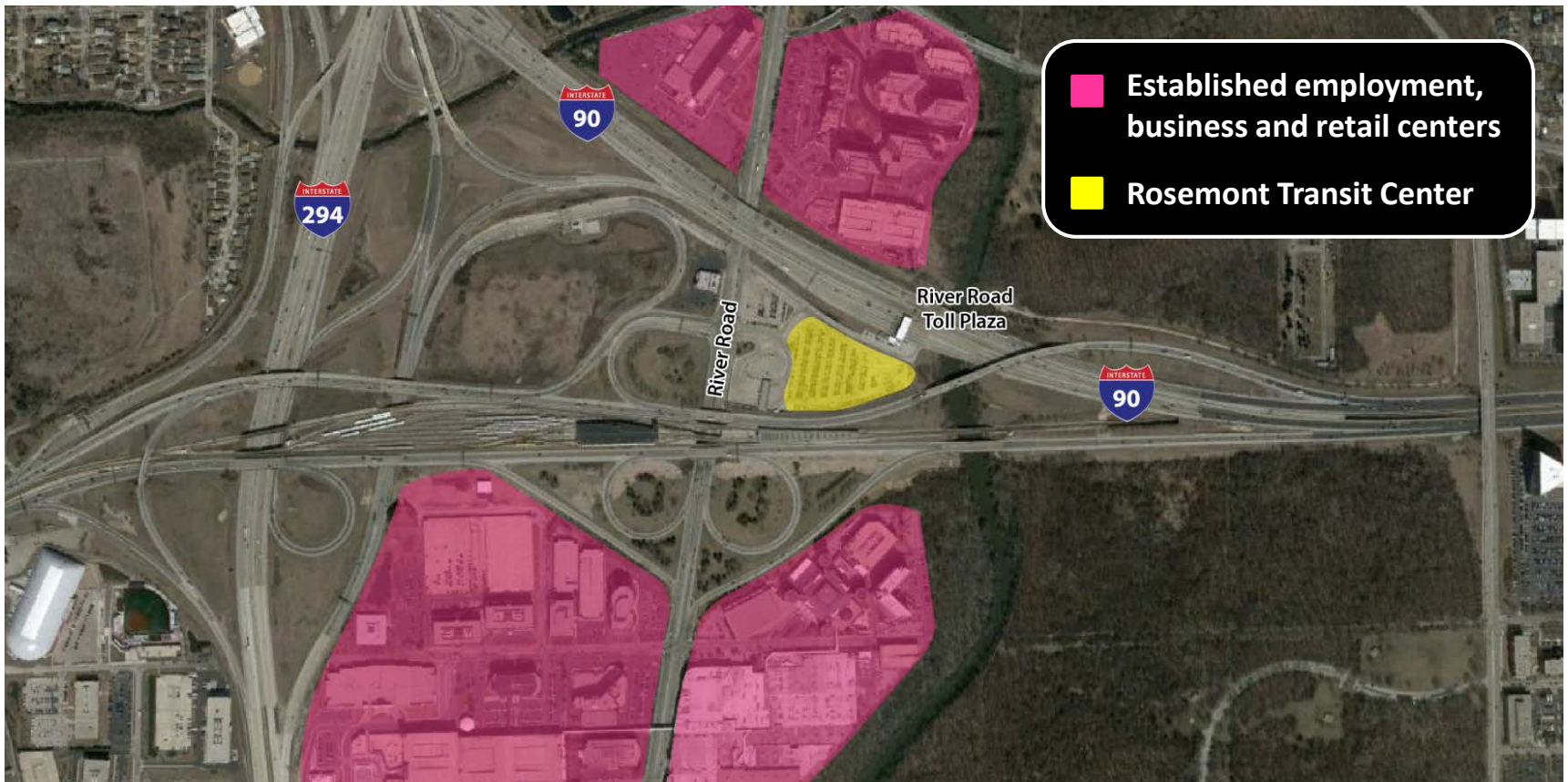
Improving Access at River Road

Exploring options to improve access for Pace buses

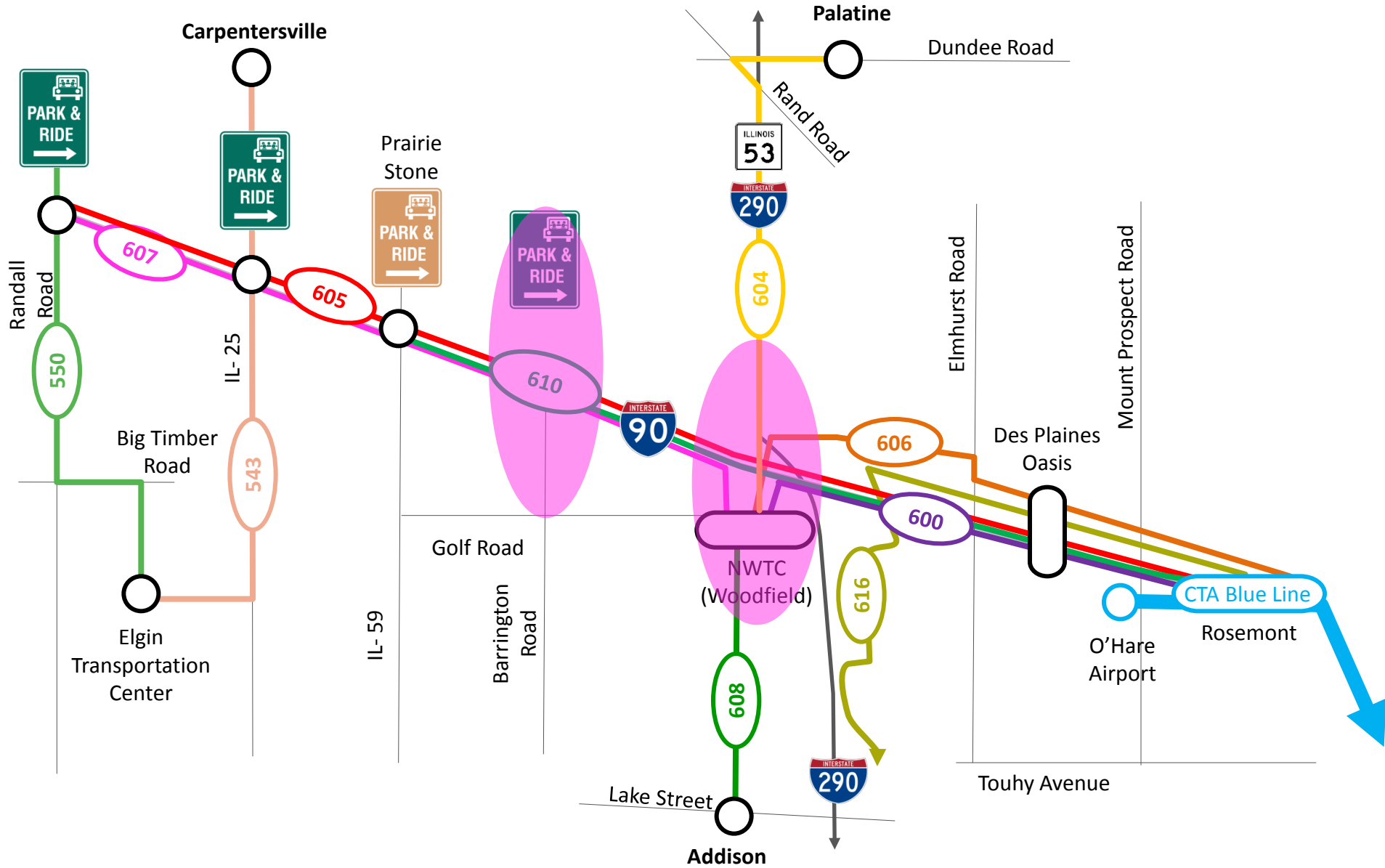


Rosemont Transit Center Study

An opportunity to create a transportation hub, improving transit access and fostering economic development



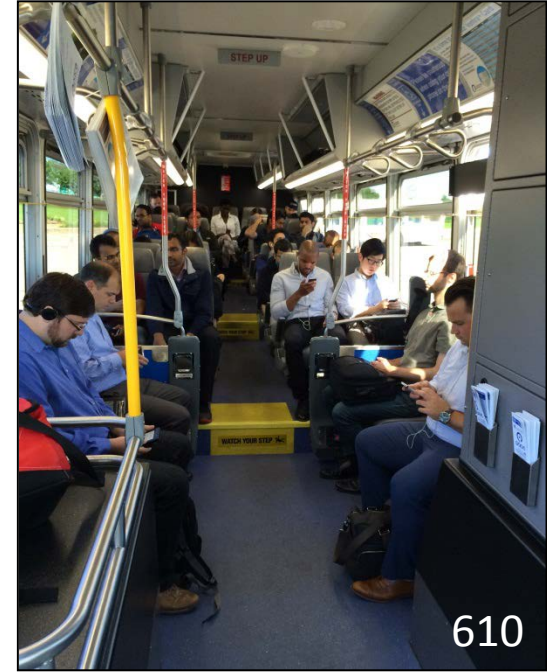
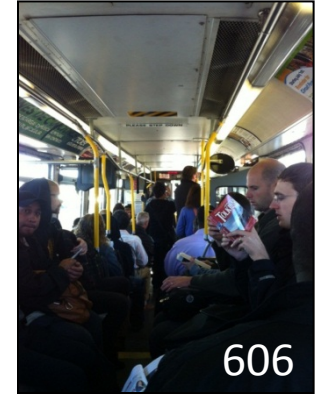
Expanded Services: System Concept



Ten Percent Ridership Increase Current Services



Route #	Description	Avg. Daily Riders (05/2014)
600	NWTC to Rosemont	424
606	Rosemont to NWTC	1,868
610	Rosemont CTA to Prairie Stone	545
616	Rosemont CTA to the Chancellory	227
Approx. Total Daily Ridership		3,065



I-90 Expansion Project

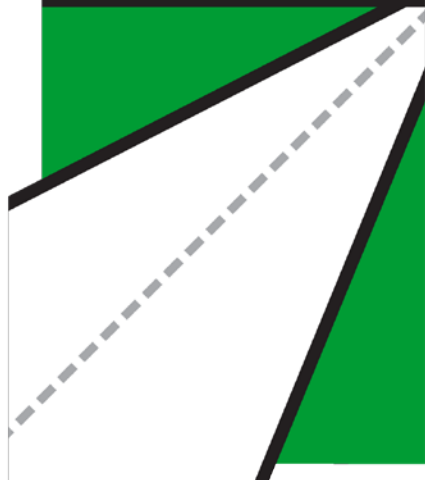
- ▶ Pace Board approved IGA with Tollway at July 2014 meeting for proposed Park & Rides
- ▶ Pace will pursue design and construction contractors to complete work
- ▶ Drafted preliminary schedules and service plans for the 2016 expansion
- ▶ Moving forward with pursuit of Categorical Exclusion from FTA to obtain grants monies for engineering and construction
- ▶ Worked with Tollway to complete rough grade of Randall Road Park & Ride site
- ▶ Plan to expand service when reconstruction of Jane Addams is completed in 2016



Next Steps

- ▶ **Board consideration of the IGA with Pace**
- ▶ **Continue planning studies**
- ▶ **Collaborate with various stakeholders**
- ▶ **Identify funding options**
- ▶ **Potential future IGAs**

**MOVE
ILLINOIS**



The Illinois Tollway

**DRIVING
THE FUTURE**

THANK YOU



Appendix

Bike and Pedestrian Accommodations

