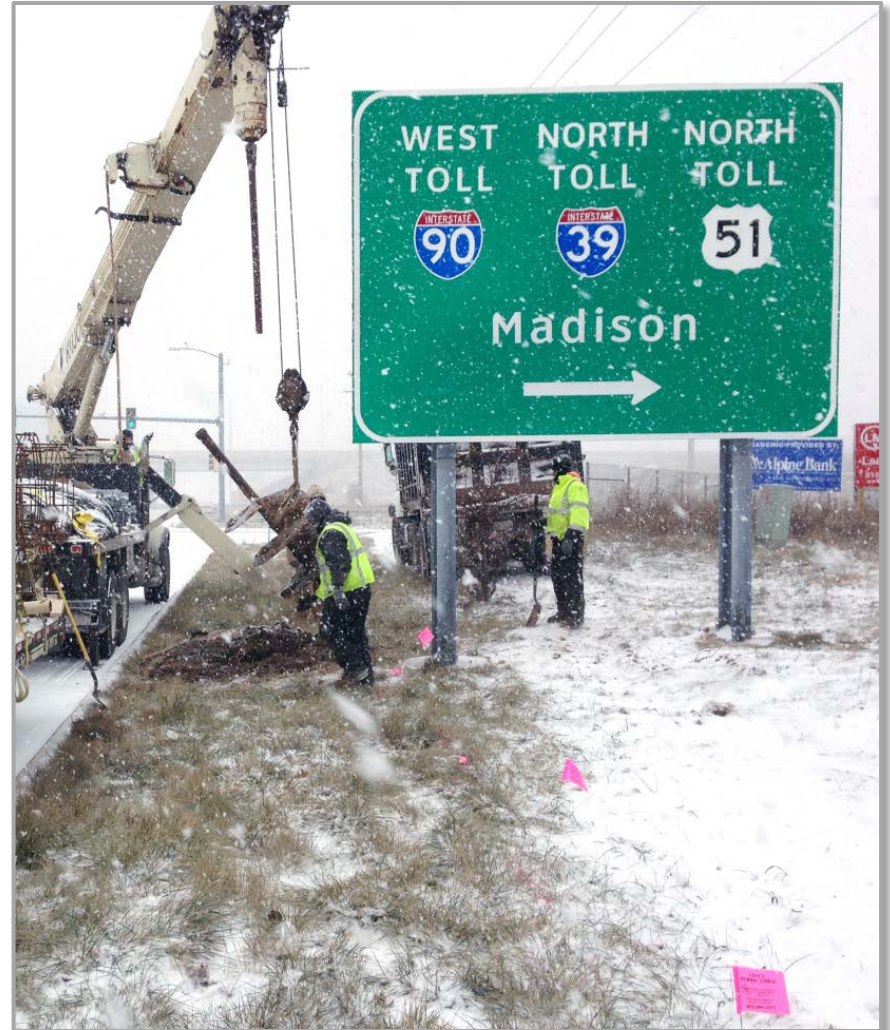


**Jane Addams Memorial Tollway (I-90)
Western Segment Schedule Mitigation**

April 16, 2014

Overview

- ▶ I-90 western segment impacted by weather
- ▶ Mitigation plan underway
- ▶ Several Authorizations to Proceed (ATPs) under development and pending Board approval
- ▶ Answer questions and seek Board input



Harsh Weather Caused Delays

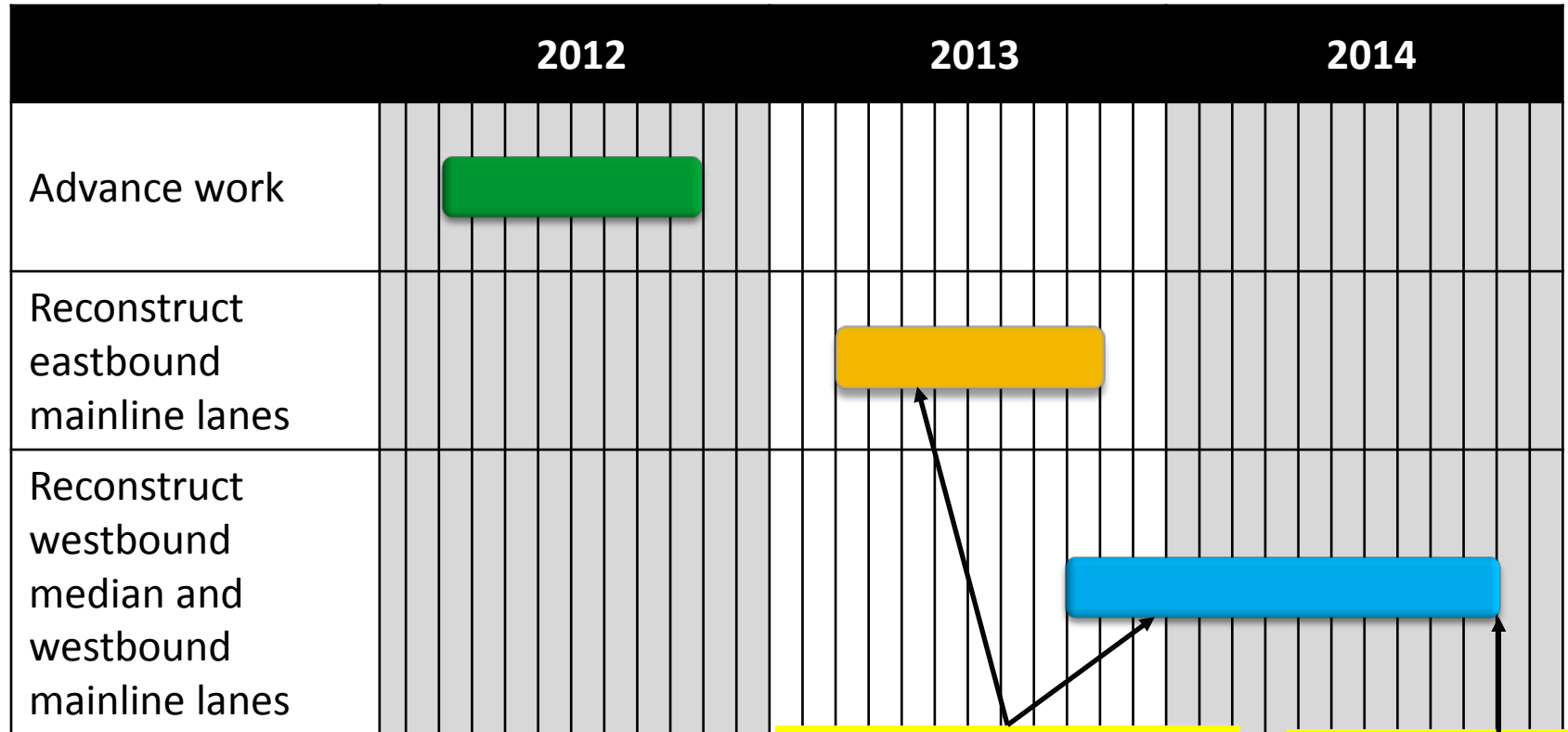
- ▶ **A very wet spring (2013)**
 - ▶ Record rainfall
 - ▶ Delayed start of work

- ▶ **Extreme cold winter (2013-2014)**
 - ▶ Record-low temperatures in January
 - ▶ Frozen ground and limited access did not allow scheduled median work

- ▶ **As of the end of March, six mainline contracts are showing delays**



Original Construction Schedule

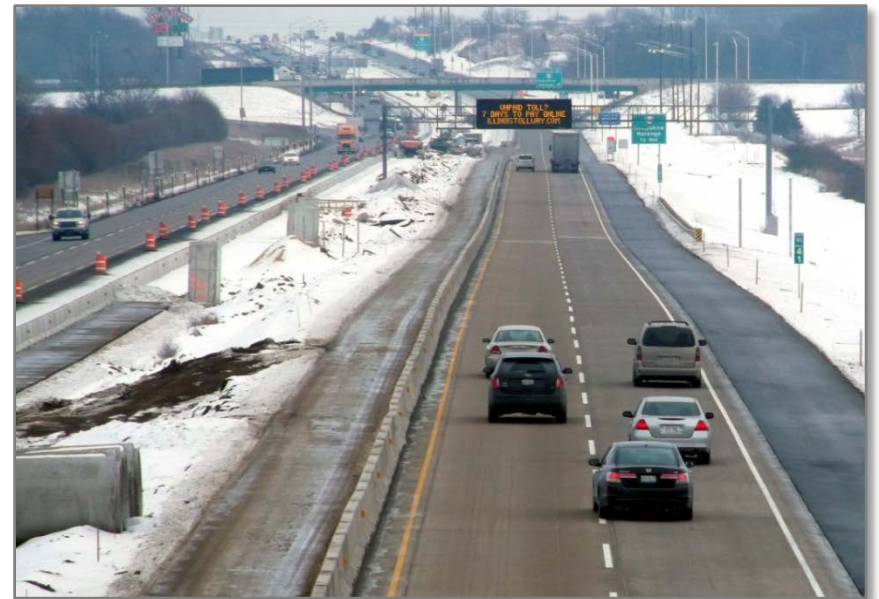


Spring rain and winter cold impacted ability to work in the field

Mitigation plan needed to maintain original schedule




Goals of Mitigation Plan

- ▶ **Minimize impacts to the customers**
 - ▶ Open three lanes of traffic in both directions in 2014
 - ▶ Travel at regular speed limits once opened
- ▶ **Maintain the schedule**
 - ▶ Complete the western segment mainline by the end of 2014
 - ▶ Western segment I-90 corridor construction is approximately 50 percent complete
- ▶ **Operate within the budget**
- ▶ **Minimize cost exposure to the Tollway**



Mitigation Plan to Maintain Schedule

- ▶ **Project team meetings held in January**
- ▶ **Developed multi-step approach mitigation plan**
 - ▶ Proactive approach to complete the work as originally planned
 - ▶ Tailored to individual contracts

Step One	Step Two	Step Three	Step Four
Address initial conditions	Winter construction	Re-phasing of work	Pavement adjustments
Modifications/improvements for unsuitable and frozen soil	Added work shifts to allow winter work	Modify the schedule to allow winter work	Address poor soils, expedite pavement construction
			Pending Board approval

Alternate Construction Options

- ▶ **Tollway recommends alternate pavement construction options**
 - ▶ Narrowed to two feasible options
 - ▶ Developed with project team input

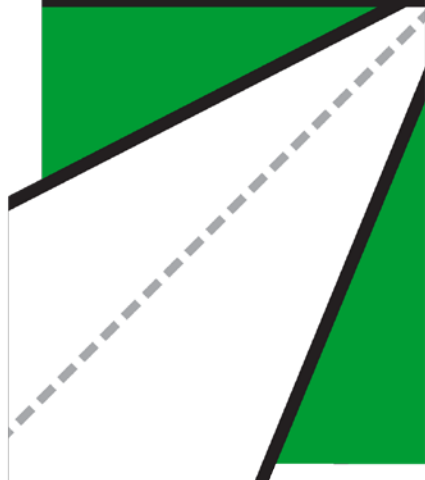
- ▶ **Benefits of pavement construction options**
 - ▶ Addresses poor soil
 - ▶ Expedites construction
 - ▶ Uses existing stone
 - ▶ Requires less hauling
 - ▶ Minimizes exposure to weather
 - ▶ Equivalent pavement quality

Next Steps

- ▶ Finalize mitigation plan for all I-90 western segment by the end of May
- ▶ Anticipate some additional Board ATPs
- ▶ Monitor schedules and track recovery efforts closely



**MOVE
ILLINOIS**



The Illinois Tollway

**DRIVING
THE FUTURE**

THANK YOU

I-90 WB Western Segment Contracts

