

Utility Coordination and Accommodation

Paul D. Kovacs, P.E., *Chief Engineer*
April 28, 2016

Background of Utilities Accommodations

Tollway adheres to established policies and procedures

Toll Highway Act

- Requires the Tollway institute a policy to accommodate utilities
- Grants the power to order utilities to relocate
- Grants the power to install new utilities

Utility Policy

- Establishes a process for relocation of existing utilities and installation of new utilities
- Provides guidelines on how utilities are relocated or installed
- Outlines the conditions for reimbursing the cost of utility relocation

Utility Agreement

- Agreement between the Tollway and a specific utility company to identify, design, construct and make payments for facilities



Process to Accommodate Utilities

Utility conflict is identified in the design phase (avoid, protect, relocate)

Utility company develops a plan, cost estimate and estimated time

Work proceeds upon review and agreement by both parties

Utility budget is typically three to five percent of construction costs



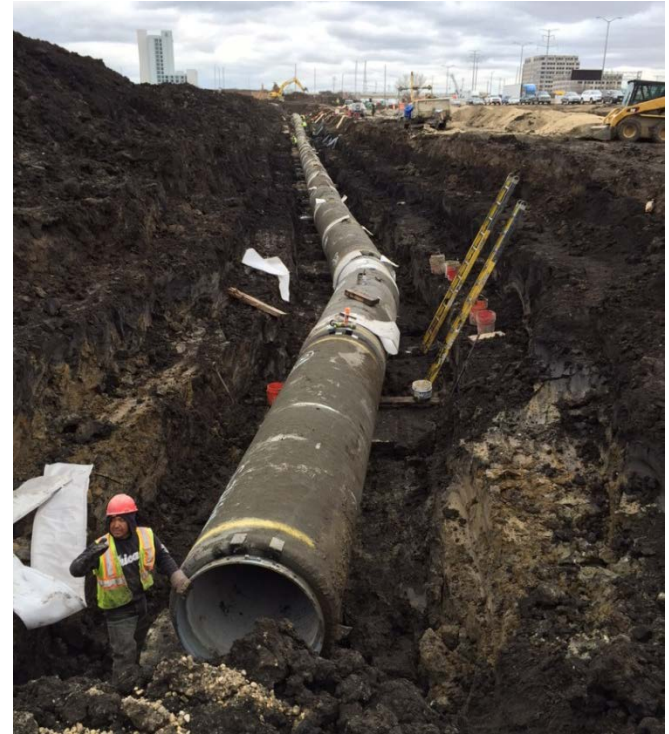
***Case Study:* Jane Addams Memorial Tollway (I-90)**

Aggressive schedule from the start

Longitudinal utilities

- Nicor and Northwest Suburban Municipal Joint Action Water Agency
- Serves 500,000 customers
- Work must be performed in specific seasons

Several types of utilities



I-90 Mitigation Efforts

Formalized work plan

To allow contractor and utility firm to understand timing, schedule, means and methods

Defined “watch and protect” procedures

To foster efficient operations and minimizes costs

Initiated detailed coordination meetings

To ensure all levels of staff are moving forward



The Illinois Tollway
DRIVING
THE FUTURE

Summary

Tollway accommodates utilities with defined policies and detailed coordination

I-90 corridor work remains on schedule and within budget

Processes are continually refined for future corridors



THANK YOU