



# **BUILDING FOR SUCCESS**

*Incident Management Construction Zone Best Practices*

**Steve Mednis**  
April 15, 2024



Please remain muted  
for the duration of  
the webinar

Questions can be  
submitted via the  
chat box, will be  
answered during the  
Q&A portion



# HOUSEKEEPING RULES



# WELCOME AND INTRODUCTIONS

## *INCIDENT MANAGEMENT CONSTRUCTION ZONE BEST PRACTICES*

**Steve Mednis**  
Illinois Tollway





# INCIDENT MANAGEMENT CONSTRUCTION ZONE BEST PRACTICES

STEVE MEDNIS  
04/15/2024





# TOPICS COVERED

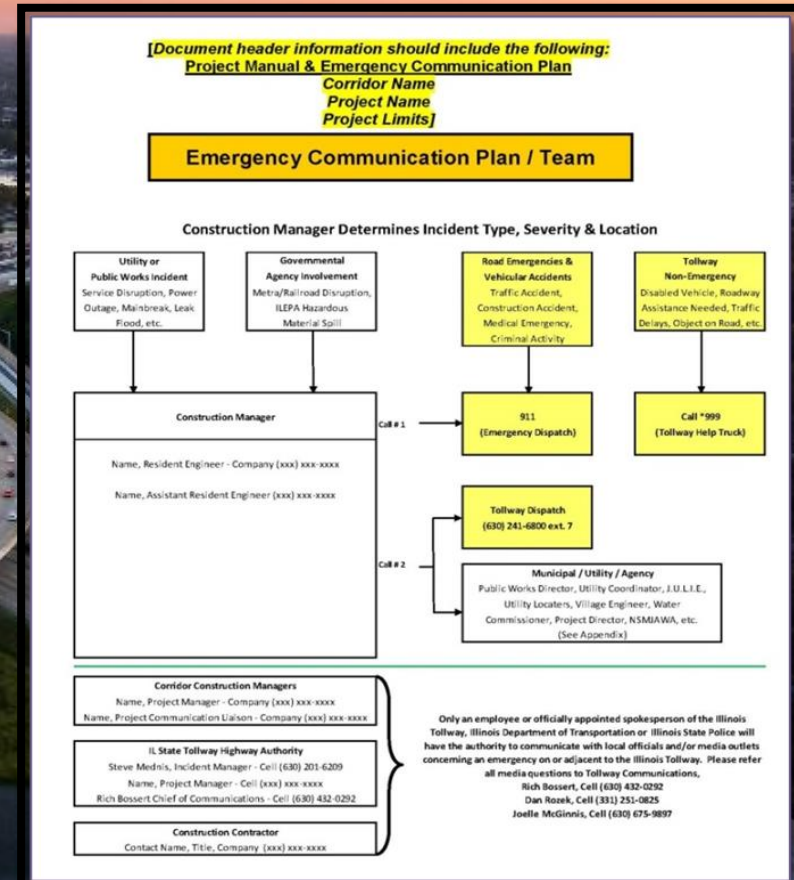
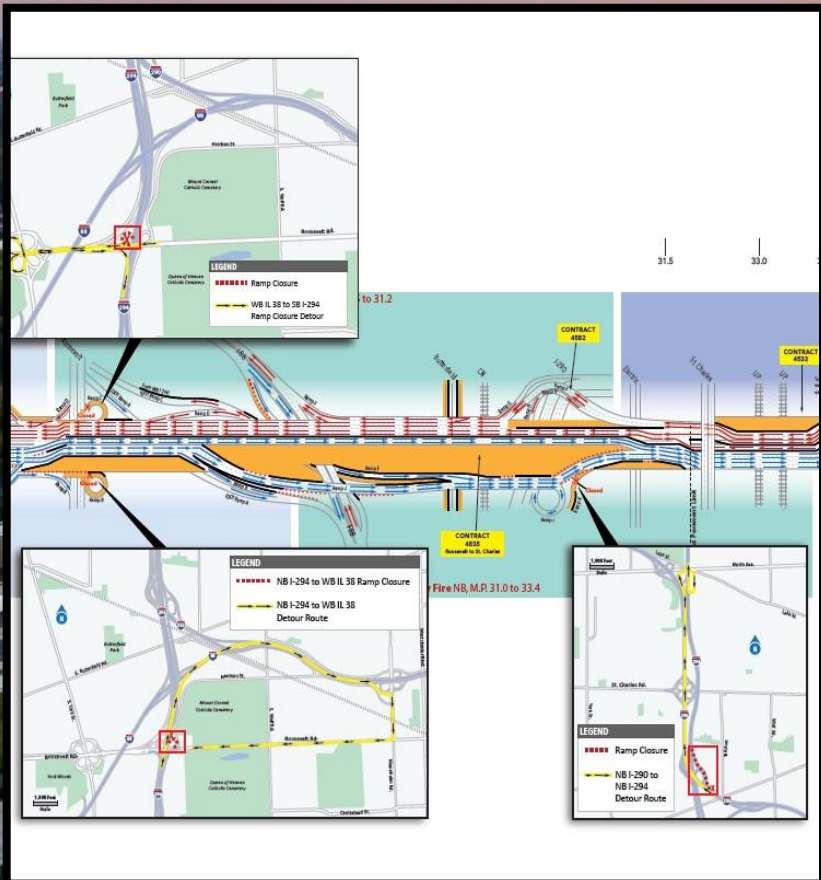
**BEST PRACTICES IN INCIDENT MANAGEMENT/ SUCCESSFUL STRATEGIES**

**RESPONDER COLLABORATION**

**LESSONS LEARNED**

**LANE CLOSURE REFERENCE, LANE CLOSURE GUIDE, ROADWAY COMMS**





# BEST PRACTICES- SUCCESSFUL STRATEGIES



# BEST PRACTICES- SUCCESSFUL STRATEGIES

## INTERNAL/EXTERNAL STAKEHOLDER ENGAGEMENT

- PRE-CONSTRUCTION MEETINGS
- RESPONDER ENGAGEMENT
- PATROL ENHANCEMENTS

## STAGING AND TRAFFIC PATTERNS

- DISCUSSIONS PERTAINING:
  - TRAFFIC SHIFTS
  - SPLITS/COUNTERFLOW LANES
  - SMART WORK ZONES

## TRAFFIC OPERATIONS/DISPATCH

- ABLE TO VERIFY INCIDENTS
- COORDINATE/COMMUNICATE NEEDS



# BEST PRACTICES- SUCCESSFUL STRATEGIES

## EMERGENCY COMMUNICATION PLAN

- COMMUNICATION CHAIN
- CONTACT INFORMATION SHARING
- REDUCES REDUNDANCY

## ICS (INCIDENT COMMAND SYSTEM)

- SYSTEMATIC TOOL FOR COMMAND, CONTROL AND COORDINATION
- DESIGNED TO MAKING EFFECTIVE USE OF PERSONNEL AND EQUIPMENT







# RESPONDER COLLABORATION

# RESPONDER COLLABORATION

## TOLLWAY MAINTENANCE

- ENHANCED PATROLS
- KNOWN ACCESS POINTS
- CIS/PULL-OFF LOCATIONS

## STATE POLICE

- ENFORCEMENT
- FULL-STOP/PRESENCE
- COMMUNICATION

## FIRE/E.M.S.

- INCLUDED IN ADVANCED COORDINATION
- COMMUNICATION
- DETOURS/ACCESS/INGRESS-EGRESS CHANGES



# RESPONDER COLLABORATION (CONT'D)

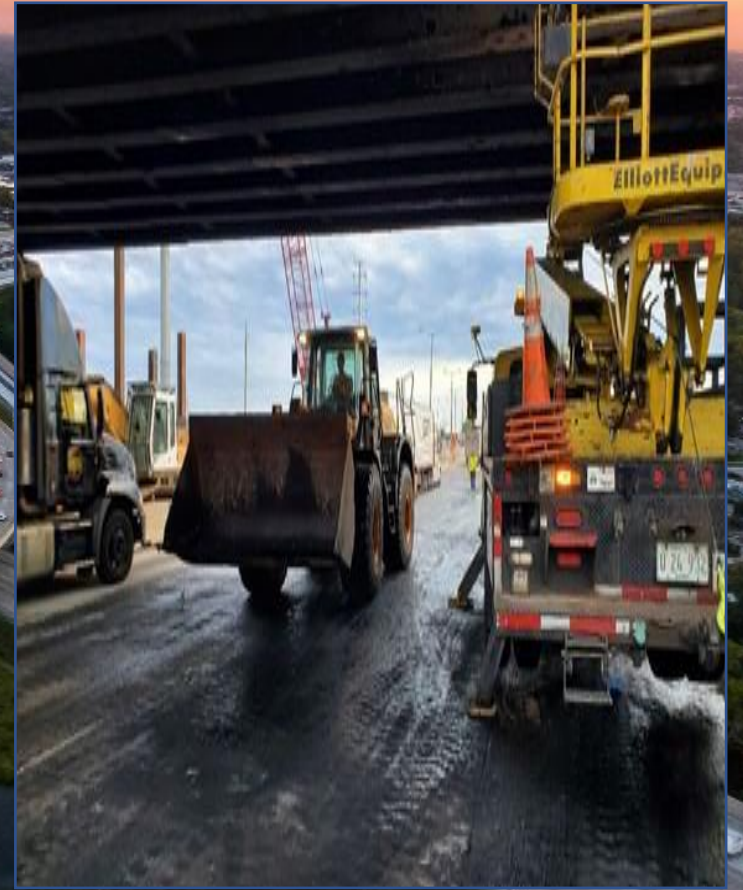
## TOWING/RECOVERY

- SET RESPONSE ZONES
- KNOWN EQUIPMENT AVAILABILITY
- HAZ-MAT MITIGATION

## CONTRACTOR EQUIPMENT

- HEAVY EQUIPMENT STAGING
- TEMP-WALL RESETTING/REPLACEMENT
- M.O.T. MAINTENANCE
- USE OF CONTRACTOR CONES/BARRELS





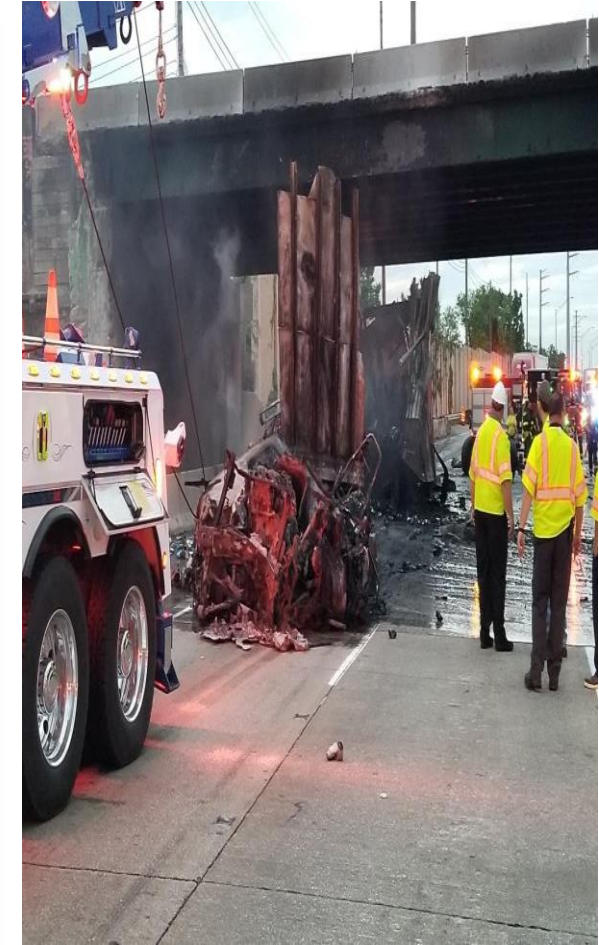
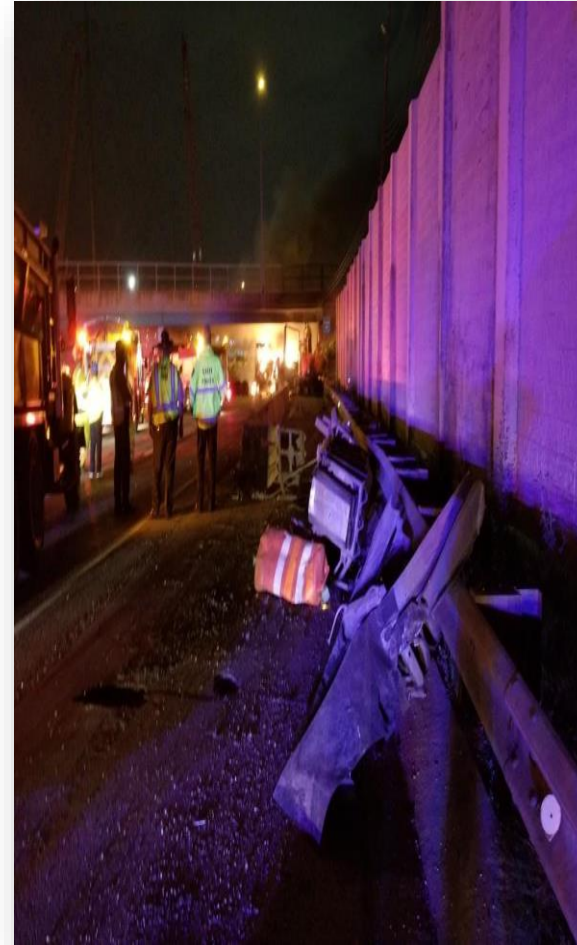
# LESSONS LEARNED



# LESSONS LEARNED

## TRUCK FIRE 06/04/2021, 32.5N I-294

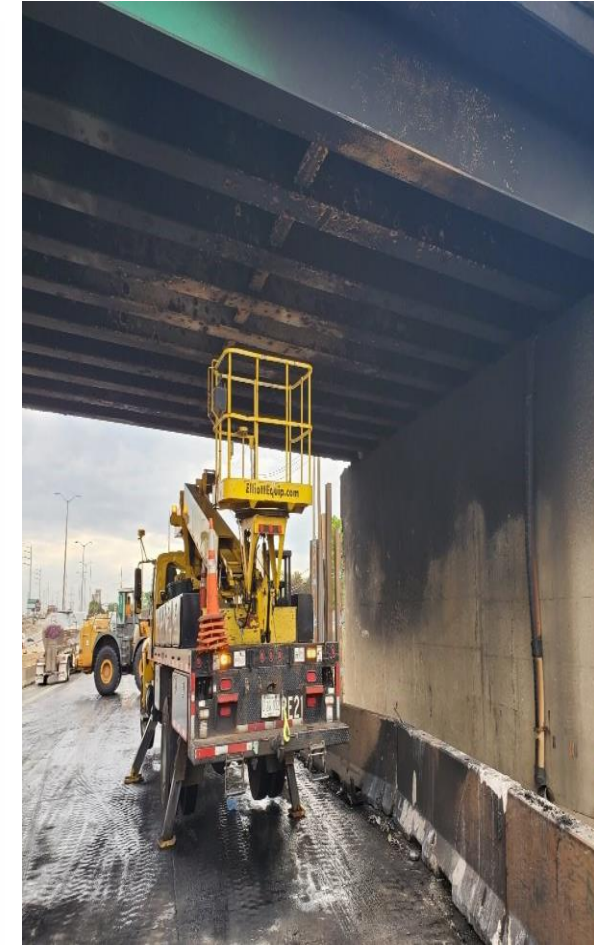
- 03:41 a.m. A tractor trailer struck temporary wall and an attenuator
- The tandem trailer rolled over and caught fire under the St. Charles rd. Bridge
- Minor injuries to driver are sustained
- Multiple agencies are dispatched to the scene including Tollway Maintenance, Fire and Rescue and Illinois State Police
- Traffic is diverted from NB I-294 to I-290
- Traffic on St. Charles rd. detoured for safety



# LESSONS LEARNED (CONT.D)

## TRUCK FIRE 06/04/2021, 32.5N I-294

- 5 a.m. Recovery units arrive to assist with fire mitigation efforts and to begin cleanup
- Mitigation and fire suppression were complicated as contents were unknown and continued to re-ignite
- 12 p.m. fire was extinguished, and recovery efforts were complete
- 4:45 p.m. bridge inspection complete/ wall repairs underway
- 5 p.m. all lanes open



ILLINOIS TOLLWAY

*Lane Closure Reference Guide*



Illinois Tollway  
2700 Ogden Avenue  
Downers Grove, IL 60515-1703  
Telephone (630) 241-6800

March 21, 2022  
Revision 13.0

2018 | Lane Closure Guide



CDM  
Smith

March 2023

# Roadway Traffic Control and Communications Manual

ILLINOIS STATE TOLL HIGHWAY AUTHORITY



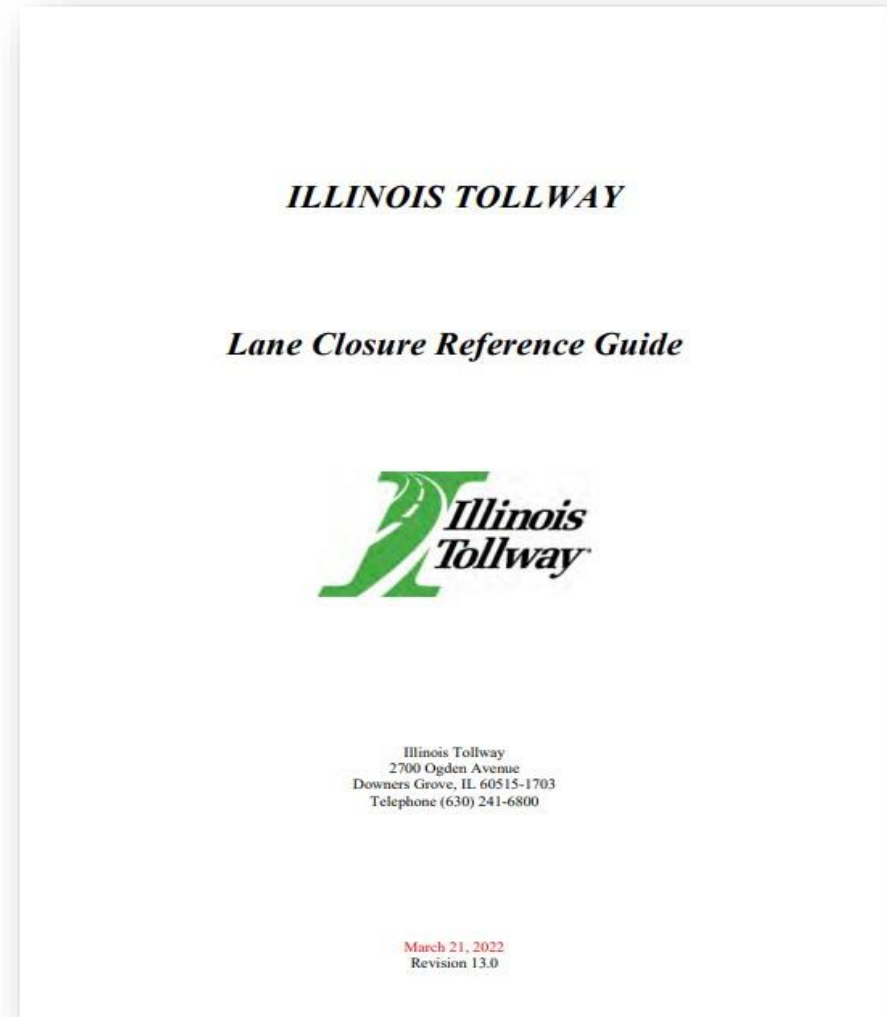
# LANE CLOSURE REFERENCE GUIDE, LANE CLOSURE GUIDE, ROADWAY COMMUNICATIONS GUIDE



# LANE CLOSURE REFERENCE GUIDE

## USED FOR OVERALL DIRECTION ON:

- CONTRACT INFORMATION PAGE
- CLOSURE REQUESTS
- REPORTING OF CLOSURES
- CANCELLATION/REVISION OF CLOSURES
- 10- DAY NOTIFICATION
- 21/2 DAY MEETINGS
- TROOPER ASSISTANCE
- EMERGENCY REQUESTS
- P.C.M.S. PLACEMENT AND MESSAGING

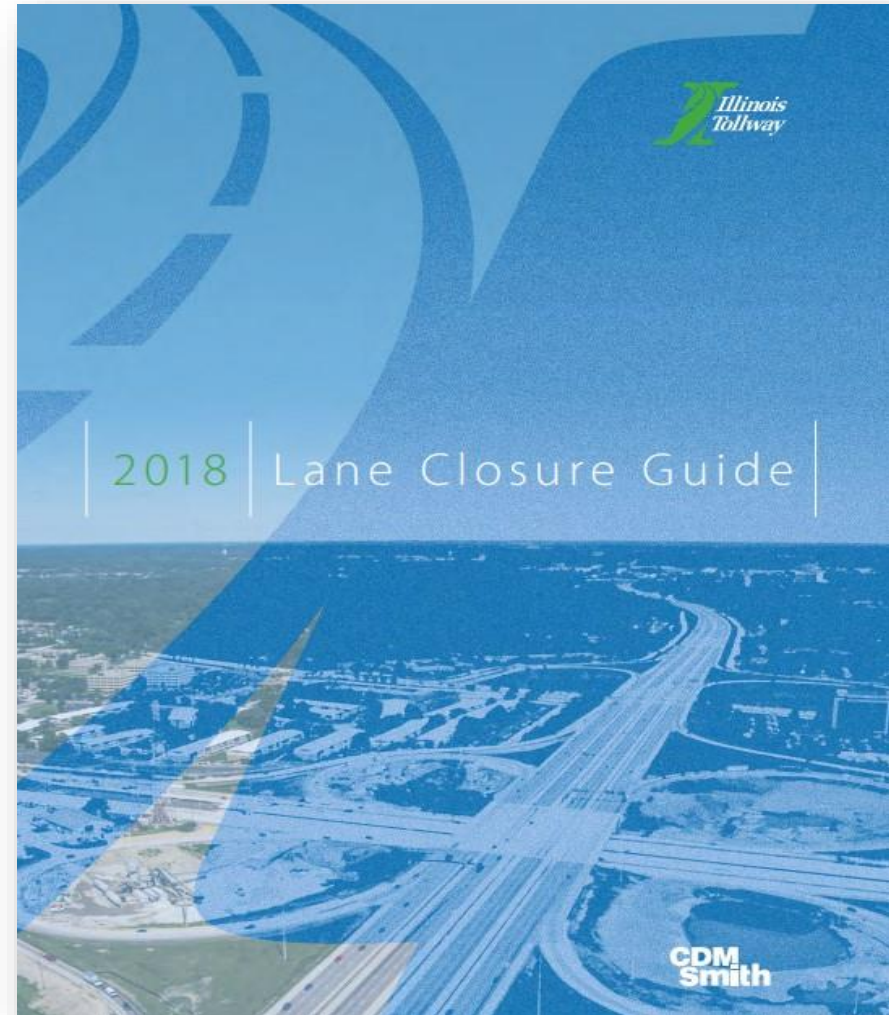




# LANE CLOSURE GUIDE (LCG)

**USED TO EVALUATE SUITABILITY OF PLANNED SHORT-TERM CLOSURE REQUESTS. BENEFITS INCLUDE:**

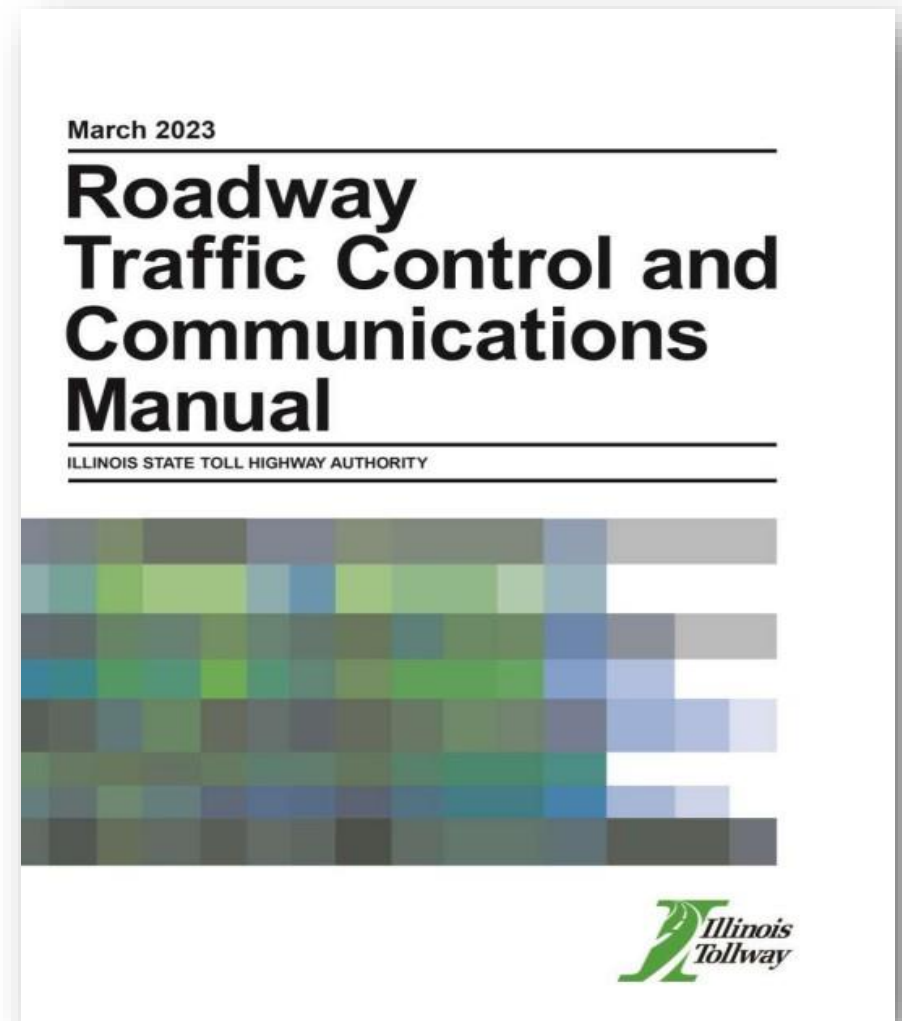
- REDUCED TRAVELER DELAYS
- REDUCED TOLL REVENUE LOSS
- REDUCED CONSTRUCTION COSTS
- INCREASED SAFETY



# ROADWAY TRAFFIC CONTROL AND COMMUNICATIONS GUIDE

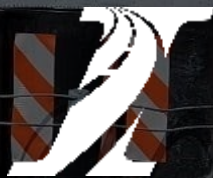
## PURPOSE:

- TO PROVIDE POLICIES, PROCEDURES, AND FOR WORK ZONE ISSUE IDENTIFICATION
- WRITTEN ACCOUNT FOR HOW CERTAIN ACTIVITIES ARE PERFORMED
- TO BE FOLLOWED BY THE DESIGNER, CM, TOLLWAY PERSONNEL AND CONTRACTORS
- IDENTIFIES WORKZONE ISSUES
- DEVELOPED PLANS FOR WORK ZONE TRAFFIC CONTROL



**RECK-LESS SHIPPING**

53'



**THANK YOU**

**EXIT**  
↑



**QUESTION AND ANSWER**

# DIVERSITY AND STRATEGIC DEVELOPMENT

## PROGRAMS

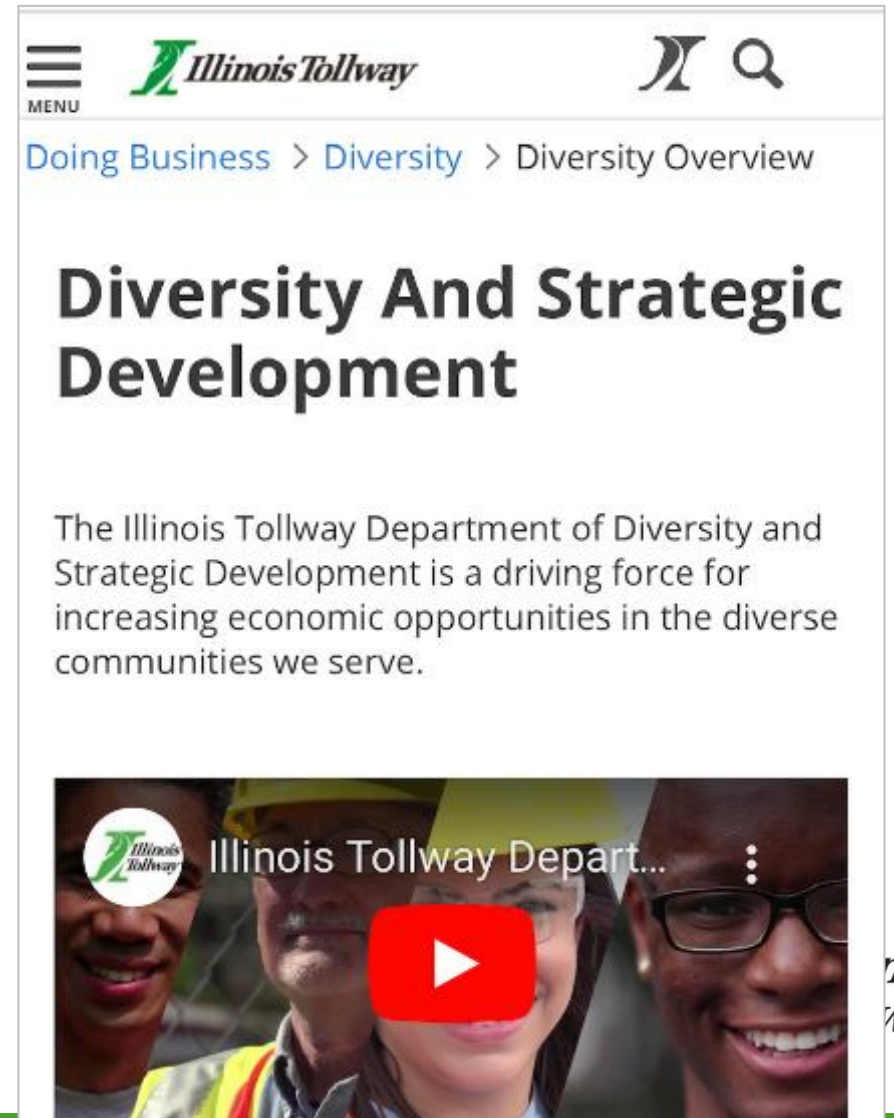
- Business assistance
- Mentoring and training
- Construction industry training and hiring opportunities

## INITIATIVES

- Virtual outreach sessions
- Training webinars
- Contracting opportunity emails

## REGISTER FOR TOLLWAY DIVERSITY ALERTS!

[lperez@getipass.com](mailto:lperez@getipass.com)



The screenshot shows the Illinois Tollway website's Diversity and Strategic Development page. At the top, there is a navigation bar with the Illinois Tollway logo, a search icon, and a menu icon. Below the navigation bar, the breadcrumb trail reads "Doing Business > Diversity > Diversity Overview". The main heading is "Diversity And Strategic Development". Below the heading, there is a paragraph of text: "The Illinois Tollway Department of Diversity and Strategic Development is a driving force for increasing economic opportunities in the diverse communities we serve." At the bottom of the screenshot, there is a video player with a red play button and a thumbnail image of four diverse people wearing hard hats. The video player has the Illinois Tollway logo in the top left corner and the text "Illinois Tollway Depart..." in the top right corner.

nois  
way

 @ILTollway

 @ILTollway

 @Illinois Tollway

 @ILTollway

 @ILTollway

SOCIAL MEDIA 



**THANK YOU**

