

# PROFESSIONAL SERVICES BULLETIN 23-1

## ADDENDUM No. 3

Addendum No. 3 changes the due date or time.

STATEMENTS OF INTEREST (SOIs) are due by 4:30:00 p.m. (Central Time)

**Due Date: March 24, 2023**

Successful Firm(s) will be notified.

Overall results will be posted on the Illinois Chief Procurement Officer's eProcurement System at: <https://www.bidbuy.illinois.gov/>

## Professional Services Bulletin

---

No. 23-1

March 10, 2023

Addendum No. 3

ILLINOIS TOLLWAY web site: [www.illinoistollway.com](http://www.illinoistollway.com)



Illinois Tollway  
2700 Ogden Avenue, Downers Grove, IL 60515

**ADDENDUM NO 3  
TO  
PROFESSIONAL SERVICES BULLETIN No 23-1**

**Addendum No. 3 changes the due date or time. Statements of Interest are due via the e-Builder process: <http://www.e-builder.net> to the Illinois State Toll Highway Authority, by 4:30:00 p.m. Central Time, March 24, 2023.**

**ADDENDUM No. 3 / REVISION DATE: March 10, 2023**

**Revision 1:** Update Statement of Interest due Date

- Statement of Interest (SOIs) are due by March 24, 2023 at 4:30 p.m. Central Time

**Revision 2:** Replace Page 2 with Page 2R

- To update Table of Contents 3.2

**Revision 3:** Replace Page 17 with Page 17R

- To update 3.2 Schedule for Vendor Selection Complete SOI's are due no later than 4:30 p.m. on March 24, 2023

The Power Point Presentation and Sign-In Sheets from the Building for Success Webinar

**QUESTIONS: The Tollway has received the following questions to PSB 23-1 via the e-Builder SOI Mailbox. The Tollway offers the following responses:**

1. We have the following question for PSB 23-1, Item 2. In PSB 23-1, Section 3.4.4, a number of items are noted as required for “**each Team member.**” Are those items required for subconsultants to a prime contractor, where there is no teaming agreement as described in Section 2.8?

**ANSWER:** No.

2. I have a question regarding Item 2. The description of the Project Manager under key personnel requires 5 years of experience in infrastructure/pavement engineering. How does the Tollway define infrastructure/pavement engineering experience?

**ANSWER:** The Tollway defines infrastructure/pavement engineering experience as documentable previous involvement, to any degree, in planning, design, construction, maintenance, or asset management of pavement or transportation infrastructure.

3. The Exhibit G – Contract Participation form is listed as one of the required submittal documents in Ebuilder. However, the form is not available to download on the Illinois Tollway’s website. Will the form be added to the website’s list of required forms so that it can be submitted with the other required documents?

**ANSWER:** Exhibit G is no longer required and has been removed from the list of required documents in eBuilder PSB SOI process.

4. With regard to Item #1, there is only one (1) IDOT prequalification category, Special Services (Electrical Engineering), required. Please confirm the statement that “The Tollway will allow a Prime Consultant to meet the prequalification for Special Services (Electrical Engineering) through a subconsultant” is correct and the Tollway’s intent is that the prime firm does not need to be prequalified by IDOT in any specific category or any category at all?

**ANSWER:** As stated in the PSB, the Tollway will allow a Prime Consultant to meet the prequalification for Special Services (Electrical Engineering) through a subconsultant.

5. Please confirm that the Direct Labor Multiplier (DLM) to be used for Item #1 is 2.8. Please confirm the requirement is for “on-site staff at the CA for support upon request”?

**ANSWER:** Please refer to Section 2.3.1. The Direct Labor Multiplier will be negotiated with the selected firm.

6. Item #1 and as noted within PSB Item Details, “The Consultant will be required to have staff available on-call 24/7/365 as required by the Tollway, with an on-site response time of maximum of two (2) hours, if required”. Please clarify which Consultant personnel (e.g., field technicians) this applies to and are these personnel to be dedicated and/or full-time on this contract?

**ANSWER:** The 2-hour response time is intended for the TIMS Support Engineer who will be able to remotely troubleshoot issues. Field Technicians will also be on-call, with a response time typically expected to be same day. Dedicated staff to address the on-call 24/7/365 is not required.

7. Item #1 states “field technicians able to test and inspect low-voltage networks”; will the test tools and equipment necessary to conduct this work be included and reimbursed as Allowable Direct Costs for the project?

**ANSWER:** Allowable Direct, per Section 2.3.4, will be negotiated with the selected vendor.

8. With regard to Item #1, if the Prime Firm/Consultant does not need to be IDOT prequalified and the services required to support this project does not entail signing and sealing contract documents then are the qualifications of an Illinois Licensed Professional Engineer only preferred for the duties of the Project Manager? Would the Illinois Tollway accept and consider acceptable substitutes, for example, minimum of 15 years of directly applicable system management, operations, and administration experience in the construction, deployment, and maintenance of ITS/electrical/construction projects of similar type and magnitude of this work?

**ANSWER:** An Illinois Licensed Professional Engineer is required for the Project Manager role.

9. Can we request for an extension of the submittal deadline for the Statement of Interest (SOI)? Is it possible to extend the deadline till March 27, if not at least till March 24?

**ANSWER:** The Statements of Interest will be due at 4:30 p.m. (Central Time) on Friday, March 24, 2023.

10. In page A-5 under Section 1.5.2 it is mentioned that: The Consultant must demonstrate experience, either directly or through their subconsultants, using the I-MIRS and/or demonstrated experience working in SQL RDS environment.

It is our understanding that I-MIRS is developed by the consultant who is currently working for the ISTHA. Of course, they will have more experience in understanding the software algorithms as well as with the use of I-MIRS. For the sake of open competition, is there anything that the ISTHA can do so that other consultants who have not worked with ISTHA would not be penalized because they are not as experienced in using I-MIRS?

**ANSWER:** I-MIRS consists of a web application (an Elastic Compute Cloud [EC2] instance on Amazon Web Service [AWS]), and a database server using SQL 2012 Relational Database Service [RDS] instance hosted on the AWS. Other pertinent components of I-MIRS include the major frameworks (Model, View, Controller [MVC] 5 [.NET Framework 4.7.1]), libraries (Entity Framework) and languages (C# 7, jQuery, and Bootstrap).

The intent is for the consultant, either directly or through their subconsultants, to have demonstrated experience working on/in an SQL RDS environment. As stated in the PSB, the Tollway will furnish to the selected consultant team all necessary background files, models, access to historic data, source code, manuals and relevant documentation to facilitate productive startup of services under new contract.

## TABLE OF CONTENTS

### PART I: THE SCHEDULE

1.1	CONTACT INFORMATION	3R
1.2	OFFICIAL NOTICE	3-4
1.3	ACCEPTANCE OF SCANNED SIGNATURES	4
1.4	PSB ITEM INDEX	5R
1.5	PSB ITEM DETAILS	A-1R- A-6

### PART II: CONTRACT CLAUSES AND REQUIREMENTS

2.1	CONSULTANT/SUBCONSULTANT CONFLICTS OF INTEREST WITHIN TOLLWAY PROJECTS	7
2.2	INSPECTOR GENERAL	8
2.3	FINANCIAL INFORMATION	8-9
2.4	ILLINOIS TOLLWAY'S CONTRACT PAYMENT POLICY	9
2.5	DISADVANTAGED BUSINESS ENTERPRISE (DBE) PARTICIPATION	9-11
2.6	PARTNERING FOR GROWTH PROGRAM GUIDELINES	11
2.7	STATE OF ILLINOIS VETERAN SMALL BUSINESS PARTICIPATION AND UTILIZATION PLAN	11-12
2.8	TEAMING AGREEMENT	12-13
2.9	MANUALS, PROCESSES AND GUIDELINES	13
2.10	PHASE III: CONSTRUCTION ENGINEERING SERVICES	13-14
2.11	CONSTRUCTION AND QUALITY ASSURANCE CONSULTANTS	14
2.12	QUALITY ASSURANCE PREQUALIFICATION CATEGORY	14
2.13	CLARIFICATION OF QUALITY CONTROL/QUALITY ASSURANCE REQUIREMENTS	14
2.14	CONSULTANT CONTRACT FORMS	14-15
2.15	SELF-PERFORMANCE	15

### PART III: REPRESENTATIONS AND INSTRUCTIONS

3.1	SELECTION CRITERIA	16
3.2	SCHEDULE FOR CONSULTANT SELECTION	17R
3.3	GUIDELINES FOR SUBMITTING SOI	17-19
3.4	SUBMITTAL INSTRUCTIONS	19-24
3.5	DISCLOSURES AND CERTIFICATIONS	25
3.6	PROTEST PROCEDURE	26
3.7	USEFUL LINKS	27
3.8	ILLINOIS EPROCUREMENT BIDBUY NOTICE	27
3.9	INFORMATION ON ACCESSING THE ILLINOIS TOLLWAY WEBSITE	28
3.10	FUTURE PROFESSIONAL SERVICES BULLETIN NOTIFICATIONS	29
3.11	RESERVED	29
3.12	EXCHANGES WITH FIRMS AFTER SOI SUBMISSION	30

### 3.2 SCHEDULE FOR VENDOR SELECTION

The Illinois Tollway anticipates selecting Vendors based on the estimated schedule below: Representatives from the Illinois Tollway will contact selected firms to schedule introductory meetings.

TASK	DATE DUE
Publish	February 10, 2023
Pre-proposal meeting 10:00:00 a.m. Central Time	February 17, 2023
Last Day for Questions no later than 4:30:00 pm Central Time	March 7, 2023
Complete SOIs are due no later than 4:30:00 pm Central Time on this date, including all required Attachments/Exhibits as specified in this PSB.	March 24, 2023
<b>Selection Committee Meeting:</b>	March/April, 2023
Estimated Board Approval	May 2023
Estimated Notice to Proceed	July 2023

### 3.3 GUIDELINES FOR SUBMITTING STATEMENTS OF INTEREST (SOI)

The firm acting as the prime must be prequalified in all of the prequalification categories requested in the project advertisement even if they plan to subcontract part of the project, except where noted in a specific project advertisement. Any Vendor, prime or sub must be prequalified by IDOT in the category of work they are performing or as stated in the item description, unless the Subconsultant is being mentored in the Partnering for Growth Program. SEE NOTICE BELOW.

#### 3.3.1 REQUIRED FORMAT FOR SUBMITTING STATEMENTS OF INTEREST

**3.3.2.1 THE FOLLOWING EXHIBITS AND DATA SHALL BE SUBMITTED IN ACCORDANCE WITH THE PSB SUBMITTAL INSTRUCTIONS AND SHALL BE DOWNLOADED FROM THE ILLINOIS TOLLWAY WEBSITE. ALL EXHIBITS SUBMITTED FOR THIS PSB MUST BE CURRENT. EXHIBITS FROM PREVIOUS PSBs WILL NOT BE ACCEPTED.**

- Exhibit A: Proposed Staff
  - Required - Submit as a separate pdf document.
  - Must include resumes
- Exhibit C: Instructions for Completing Exhibit C and Current Obligations form
  - Required - Submit as a separate pdf document.
- Exhibit D: Availability of Key Project Personnel
  - Required - Submit as a separate pdf document.
- Exhibit E-DBE/VOSB: Partnering for Growth Program
  - If proposing a mentor-protégé arrangement with a DBE or VOSB firm, this Exhibit is required.
  - Submit as a separate pdf document.
- Exhibit E- Reverse DBE/VOSB: Partnering for Growth Program
  - If proposing a mentor-protégé arrangement with a DBE or VOSB firm where the subconsultant is mentoring, this Exhibit is required.
  - Submit as a separate pdf document.



# Illinois Tollway **DIVERSITY**

*Driving Economic Opportunities*

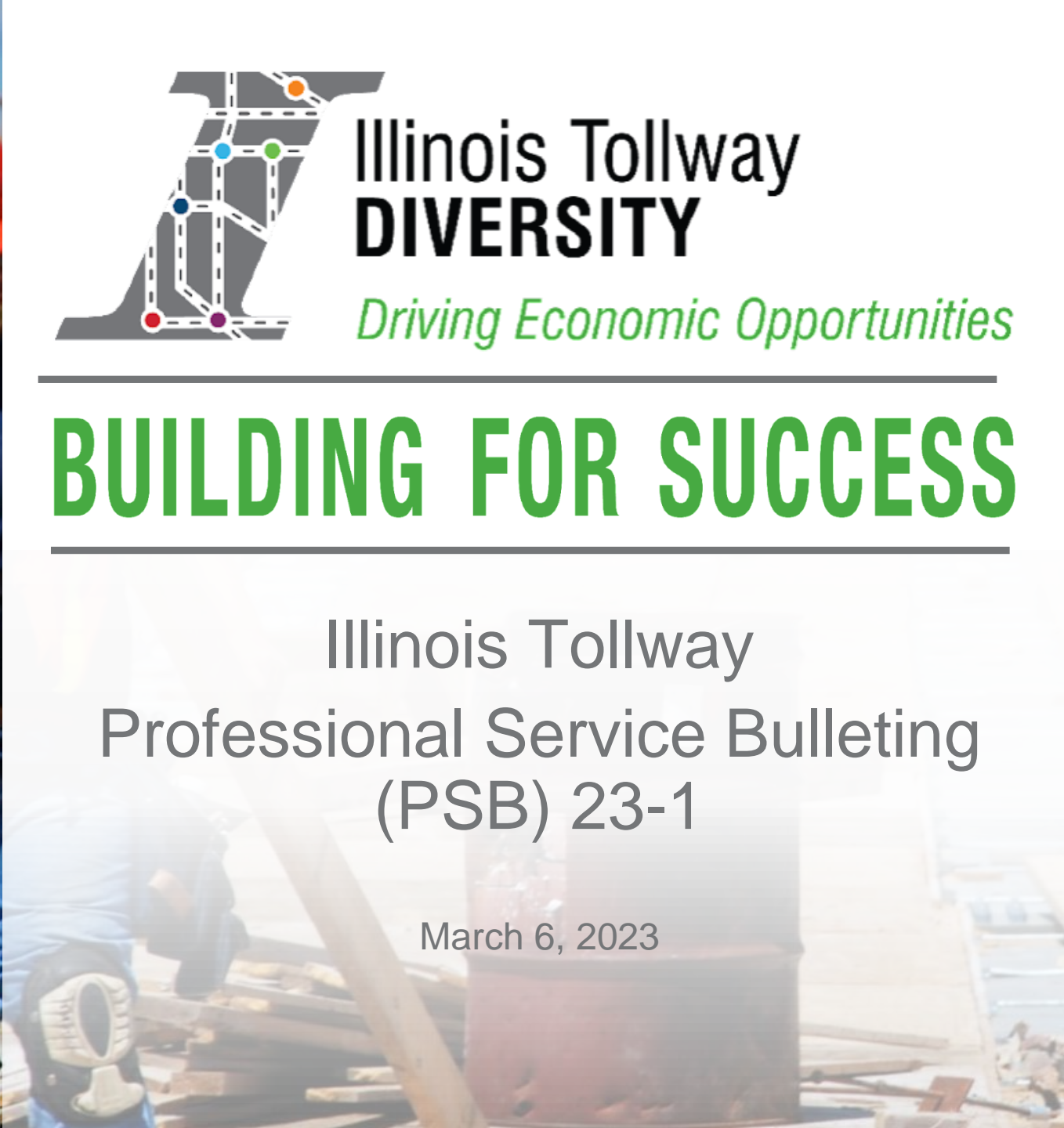
---

## **BUILDING FOR SUCCESS**

---

Illinois Tollway  
Professional Service Bulletin  
(PSB) 23-1

March 6, 2023



# HOUSEKEEPING RULES

---



## Housekeeping Rules

---





# WELCOME & INTRODUCTIONS

---

## Illinois Tollway Professional Service Bulletin (PSB) 23-1

---

**Rob Glaz**  
ITS Manager  
Illinois Tollway

**Cindy Williams**  
Deputy Chief of Program  
Implementation  
Illinois Tollway



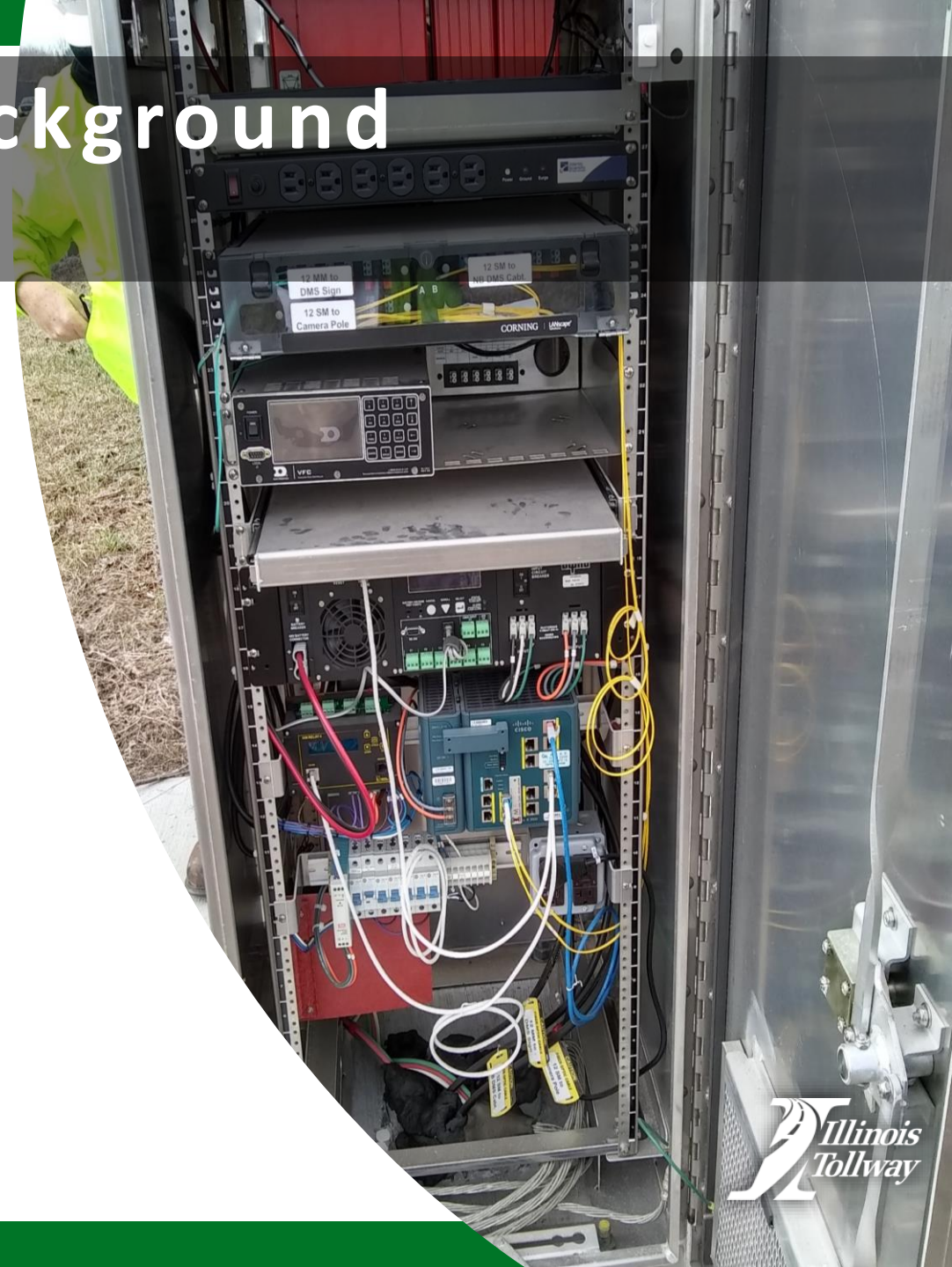
# ITEM 1

## Intelligent Transportation System (ITS) Deployment and System Management (RR-21-9245R)

# General Description and Background

## Intelligent Transportation Systems (ITS)

- CCTV Cameras
- Vehicle Detectors
- Dynamic Message Signs (DMS)
- Lane Control Signs (LCS)
- Weigh-in-Motion (WIM)
- Roadway Weather Information Systems (RWIS)



# ITS EQUIPMENT GROWTH

## *ITS equipment deployed*

ITS device expansion 2016-2022				
Device type	Total	System expansion	Total	% Increase
	2016	2017 - August 2022	August 2022	2016-2022
Closed-circuit television	1,007	519	1,526	51.5%
Dynamic message signs	71	6	77	8.5%
Lane control signs	376	0	376	0%
Vehicle detection systems	350	122	472	35%
Roadway weather information systems	18	2	20	11%
Weigh-in-motion	5	0	5	0%
Flashing beacon	6	11	17	183%
Devices	1,457	657	2,603	



# Typical Tasks

## Program Management

- Oversee ITS network
- Manage ITS Maintenance contract

## ITS Maintenance and Device Configuration

- Configure various ITS devices
- Provide trouble ticket field investigation and remediation



# Key Personnel

## Project Manager

- Must be Illinois Licensed Professional Engineer

## TIMS Support Engineer

- Strong understanding of digital communications
- Responsible for monitoring network devices

## ITS Maintenance Logistics Technician

- Background in construction management, estimating, scheduling and inventory control




# Additional Expectations

## Field Support

- On-site support staff at our central office upon request
- Field technicians able to work on low-voltage networks
- Maintenance vehicles, tools and test equipment needed under contract
- Staff available on-call 24/7/365 as required by the Tollway, with an on-site response of two (2) hours, if required.





**ITEM 2**  
**Systemwide, Pavement Management, Technical Assistance, and Materials Engineering Design Support (MO-21-1281R)**



# MO-21-1281R

## Systemwide, Pavement Management, Technical Assistance, and Materials Engineering Design Support

- Pavement and Asset Management and Condition Monitoring
- Support Services

The collage features several key elements:

- Top Left:** A wide-angle view of a multi-lane highway under a cloudy sky.
- Top Right:** A close-up, vertical view of a textured pavement surface.
- Middle Left:** A road view showing a concrete curb and guardrail.
- Middle Center:** A central graphic with a purple and green background. Text includes: "PAVEMENT MANAGEMENT SYSTEM FOR THE ILLINOIS TOLLWAY", "2022 System Update Report", "FINAL REPORT", and contact information for The Illinois Tollway (2700 Ogden Avenue, Downers Grove, Illinois 60515, Tel: (830) 241-6800, Fax: (830) 241-6105).
- Middle Right:** A graphic titled "2021 Illinois Tollway Pavement Asset Management Plan - v15" featuring a traffic light intersection.
- Bottom Left:** A graphic titled "2021 Illinois Tollway Ramp Asset Management Plan - v2" showing a highway ramp with overhead signs for "BUSINESS STATE ST 2 MILES", "WEST Wisconsin", "SOUTH TO Bloomington", and "EXIT 17 ONLY".
- Bottom Right:** A screenshot of the "Illinois Materials Inspection and Reporting System" (MIRS) login page. It includes fields for "Username" and "Password", a "Remember me" checkbox, a "Log in" button, and a "Forgot Password or Username?" link. The MIRS logo is also present.



## Pavement and Asset Management and Condition Monitoring

- Annual collection of digital images and laser crack measurement system (LCMS) sensor data of all lanes, all directions, for the Tollway's mainline pavements (294 centerline miles, 2296 lane miles) with ramp pavements (476 ramps) included every other year.
- Calculate condition rating survey (CRS) values according to the established Illinois Department of Transportation methodology.
- Determine the remaining service life (RSL) for each homogenous Tollway pavement segment.
- Prepare an annual pavement management system report.
- Maintain the pavement asset management plan (PAMP) and the ramp asset management plan (RAMP).

## **Pavement and Asset Management and Condition Monitoring (cont.)**

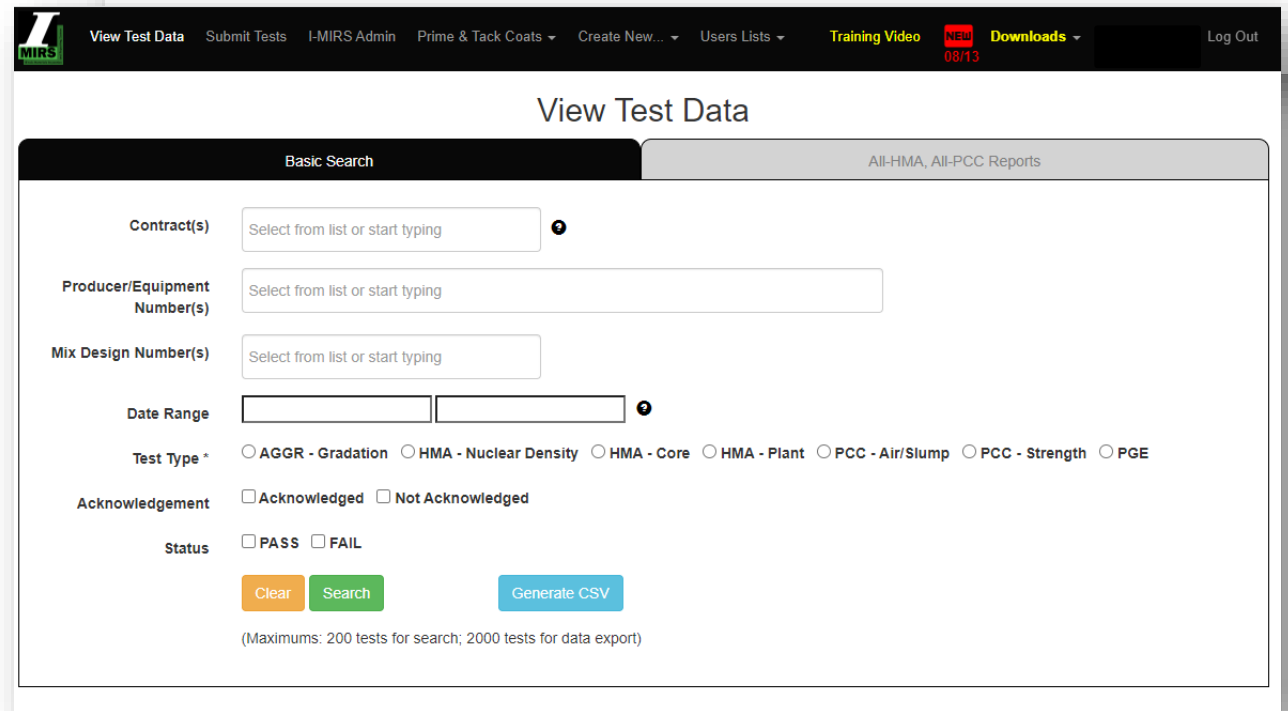
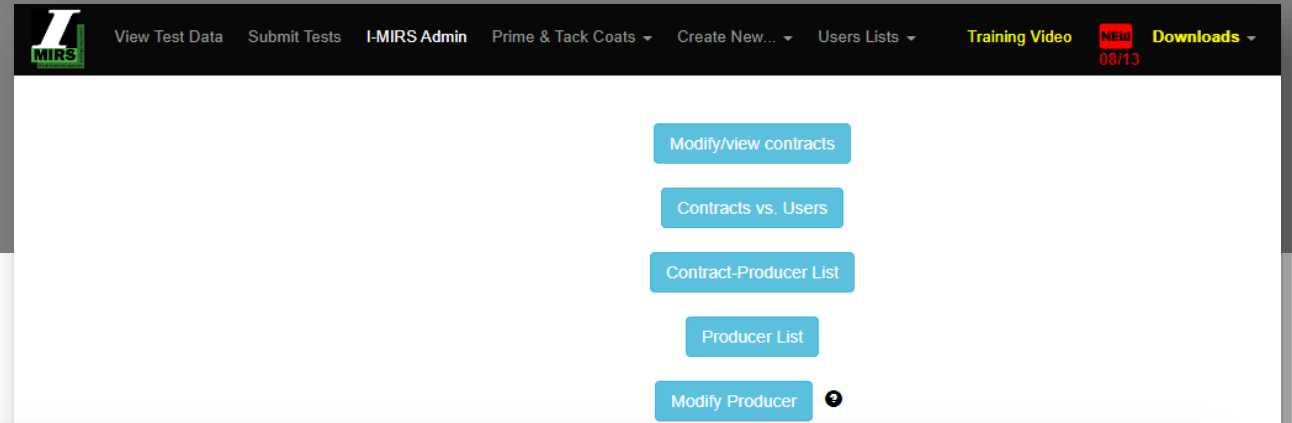
- Annually, process and deliver a complete set of digital images to the Tollway.
- Annually, measure all lane line (skip dash) in-place pavement markings for presence and retro reflectivity and provide recommendations for re-striping where necessary.
- Annually, evaluate smoothness across all mainline bridges and associated structural/pavement elements (approach and transitions).
- Biennially, or as requested, measure and evaluate Tollway pavement friction every 0.1 mile in both directions across the system.
- Maintain records or databases of existing roadway conditions, pavement designs, and provide technical assistance in these areas as requested.

# MO-21-1281R

## Support Services

- Maintain and manage the existing Illinois Materials Information and Reporting System (I-MIRS).
  - I-MIRS stores aggregate, asphalt, concrete, and tack coat test results for QC, QA, and IA.
- Provide an evaluation of current I-MIRS system to include upgrades or potential replacement to ensure proper QC/QA compliance.

[www.i-mirs.com](http://www.i-mirs.com)



# MO-21-1281R

## Support Services (cont.)

- Evaluate and report on the condition of assets maintained by Tollway maintenance forces via the Maintenance Quality Assurance (MQA) program, developed to identify and monitor the effectiveness of the Illinois Tollway's roadway maintenance efforts. Consists of biannual in-field evaluation of assets and the associated maintenance activities and providing ratings using existing Tollway rating manual and check sheets.
- Assist the Tollway with engineering research projects performed by others.
- Surveying of mainline bridge decks using GPR to determine the extent of deterioration and depth-to-steel reinforcement (quarter of the 389 bridges, annually).
- Monitor, evaluate and consult on new and existing pavement and pavement marking test sections and pilot projects.
- Periodic data takeoff and analysis to quantify and evaluate Tollway assets from vehicle imagery on as-needed basis.



# MO-21-1281R

## Support Services (cont.)

- Assist the Tollway in the development and refinement of pavement and related infrastructure design standards and construction specifications.
- Assist the Tollway in developing pavement and structural rehabilitation and reconstruction methods and material improvements based upon the latest research and performance.
- Assist with the Tollway's evaluation of sustainability of Tollway practices and projects via the Tollway's INVEST program and calculation of environmental impacts.
- Provide engineering support to assist the Tollway with design reviews, development and revisions to Special Provisions and Tollway Standards.
- Provide direct materials engineering support to Tollway Materials including full time on-site materials engineering support for field and office materials engineering tasks. The consultant will also coordinate activities and products with other consultants under contract with the Tollway.



# MO-21-1281R, Qualifications

## No IDOT prequalification for this item

### Team must demonstrate they are equipped and have experience with the following:

- Digital pavement survey vehicle that includes a LCMS to acquire high resolution 3D pavement profiles and a 360° panoramic imaging system
- Performing pavement condition surveys
- Falling weight deflectometer (as-needed)
- Vehicle mounted ground penetrating radar for pavement and bridge deck analysis
- Locked wheel friction tester
- Mobile and handheld pavement marking retro reflectometers



# MO-21-1281R, Qualifications (cont.)

## Must demonstrate experience using:

- AASHTO Pavement ME Design
- I-MIRS and/or demonstrated experience working in SQL RDS environment
- Pavement management software

## 20% D/M/WBE participation goal and 3% VOSB participation goal

*The Tollway will furnish to the selected consultant team all necessary background files, models, access to historic data, source code, manuals and relevant documentation to facilitate productive startup of services. Tollway will also provide required traffic control support for activities within the Tollway's right-of-way on a coordinated as-needed basis.*





# MO-21-1281R, Key Personnel

## Key Personnel

- Project manager\*
- Pavement design engineer\*
- Pavement management engineer
- On-site materials engineer
- I-MIRS user support liaison

*\*Must be a professional engineer. A professional engineer that is licensed in another state can be proposed for this role, but the individual(s) will need to be licensed in Illinois before performing work on this contract.*

**This project is scheduled to start in Fall 2023.**



# SUBMISSION via e-Builder

This is not an invitation for bids. Consultants properly prequalified for the projects listed herein may indicate their desire to be considered for selection by submitting an SOI to the Illinois Tollway via the e-Builder PSB 23-1 SOI process.

The Illinois Tollway follows the Qualifications Based Selection (QBS) process mandated by Illinois statute (30 ILCS 535): Architectural, Engineering, and Land Surveying Qualifications Based Selection Act) for selecting qualified Consultants under this PSB.



# SUBMISSION via e-Builder

## Section 1.2.1 PSB 23-1 SUMMARY

**Information for the e-Builder process for PSB 23-1 can be found in the Public Folder at:**

**<https://app.e-builder.net/public/PublicFolderView.aspx?FolderID={dc0355ee-4323-458e-91b5-547c6655b5f5}>**

**You will need the following before you can submit an SOI in e-Builder:**

- **e-Builder resources, including PSB SOI user manual, FAQ file, and videos (see Public Folder link above)**
- **Webinar Training (see Section 3.7 Useful Links for training webinar registration link)**
  - Training opportunities are currently scheduled for the following dates:
    - March 7, 2023: 1pm-2pm
    - March 10, 2023: 11am-12pm
- **e-Builder Login ID (see Section 3.4 Submittal Instructions)**
- **Firm Code Name (see Section 3.4 Submittal Instructions)**



# PSB SCHEDULE

- Last Day for Questions no later than March 7, 2023 at 4:30:00 pm Central Time
  - All questions related to this PSB must be submitted electronically through e-builder SOI mailbox at [PSB 23-1.01 Questions and RFIs@docs.e-builder.net](mailto:PSB_23-1.01_Questions_and_RFIs@docs.e-builder.net)
  - Answers will be addressed via Addendum published on the Tollway Website and the Illinois eProcurement site-BidBuy.
- Complete SOI's are due no later than March 17, 2023 at 4:30:00 pm Central Time including all required Attachments/Exhibits as specified in this PSB
  - All submittals for this PSB will be received through the Illinois Tollway's e-Builder PSB SOI process at: <https://app.e-builder.net/>.
- Selection Committee Meeting March/April 2023
- Estimated Board Approval May 2023
- Estimated Notice to Proceed July 2023



# DIVERSITY AND STRATEGIC DEVELOPMENT

## Programs

- ConstructionWorks
- Diversity Webinar Series
- Earned Credit Program
- Partnering for Growth Program
- ROCIP
- Small Business Initiative
- Technical Assistance Program

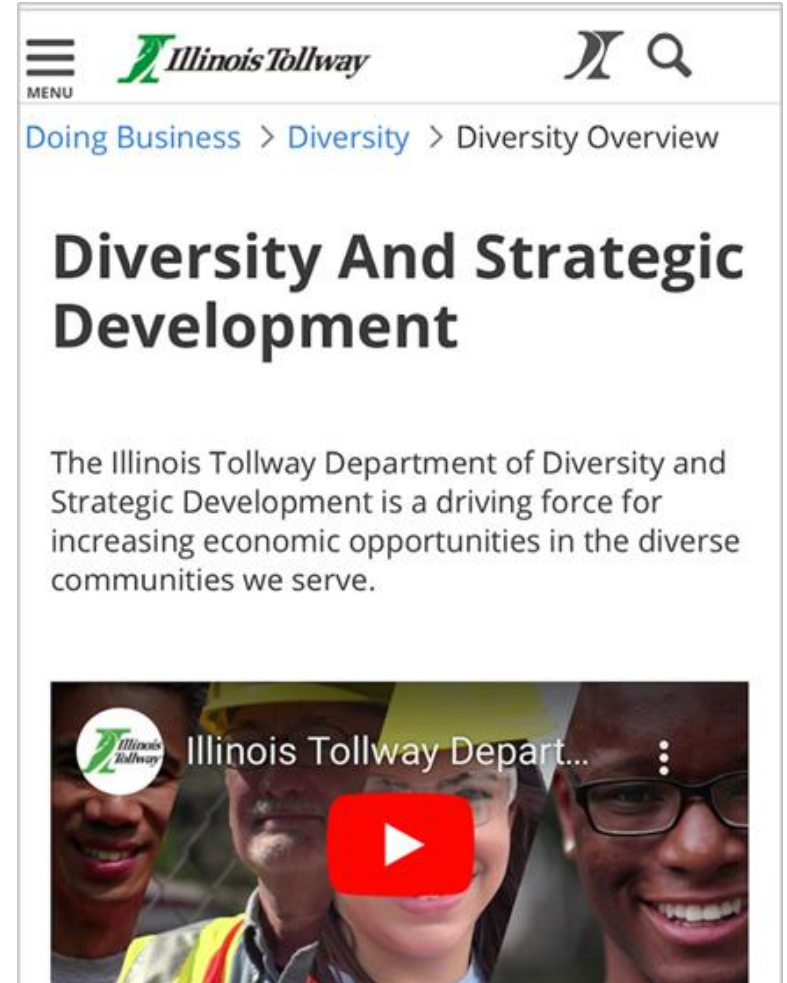
## Initiatives

- Virtual outreach sessions
- Training webinars
- Contracting opportunity emails

## Register for Tollway Diversity alerts!

- [lperez@getipass.com](mailto:lperez@getipass.com)

Visit [illinoistollway.com](http://illinoistollway.com) to get started



The screenshot shows the Illinois Tollway website's Diversity and Strategic Development page. At the top, there is a navigation bar with the Illinois Tollway logo, a search icon, and a menu icon. Below the navigation bar, the breadcrumb trail reads "Doing Business > Diversity > Diversity Overview". The main heading is "Diversity And Strategic Development". Below the heading, there is a paragraph of text: "The Illinois Tollway Department of Diversity and Strategic Development is a driving force for increasing economic opportunities in the diverse communities we serve." At the bottom of the screenshot, there is a video player with a red play button and a thumbnail image showing four diverse people smiling. The video title is "Illinois Tollway Depart..." and the video player includes the Illinois Tollway logo in the top left corner.



# THANK YOU

# PRE-SUBMISSION CONFERENCE SIGN-IN

Bid Description:	PSB 23-1 Building for Success Webinar		
BidBuy Number:	23-557THA-ENGCO-B-34337	Solicitation Publication Date:	2/10/2023
		Due Date:	
Vendor Conference Date & Time:	3/6/23 3:00pm	Conference Location:	WebEx
Attendance is:	Not Mandatory		

## ATTENDEES

### PLEASE PRINT CLEARLY

	NAME AND TITLE	COMPANY REPRESENTED	TELEPHONE	EMAIL ADDRESS
1.	Keith Whyte E	agle engineering international		keith@eeiengineers.us
2.	Noel Wolf	Collinwood		noel.wolf@collinwood.co
3.	Melanie Rojas	GSG Consultants		mrojas@gsg-consultants.com
4.	Jason Gaudry	Montel Technologies, LLC		jason.gaudry@monteltech.com
5.	Roderick Drew	HNTB Corp		rdrew@getipass.com
6.	Marcita Hinton	Procurement		marcitahinton@gmail.com
7.	Percy Kabir	Michael Baker International		percy.kabir@mbakerintl.com
8.	Christos Achillides	Iteris, Inc.		cachillides@iteris.com
9.	Hari Priya Pemmaraju Venkata	ERES International Inc. DBA Engineering and Research International Inc.		hariPriya.pemmaraju@eriusa.com
10.	Trisha Novosel	SQN Associates, LLC		tnovosel@sqna.com
11.	Dawn Kujawa	Michael Baker International		dawn.kujawa@mbakerintl.com
12.	ABBAS A BUTT	ERES International, Inc. D/B/A Engineering And Research International, Inc. (ERI)		abbas.butt@eriusa.com
13.	Gretchen Mitchell	Stantec Consulting Services Inc.		gretchen.mitchell@stantec.com

## PRE-SUBMISSION CONFERENCE SIGN-IN

	NAME AND TITLE	COMPANY REPRESENTED	TELEPHONE	EMAIL ADDRESS
14.	Abdul Dahhan	Chicago Testing Laboratory, Inc.		adahhan@chicagotestinglab.com
15.	Imad Shahatit	Gulaid Consulting Engineers, P. C.		ishahatit@gulaidce.com
16.	Rashed Gulaid	Gulaid Consulting Engineers, P.C.		rashed@gulaidce.com
17.	Katherine Balka	STV Incorporated		katherine.balka@stvinc.com
18.	Walter Chornomaz	Mead & Hunt		walter.chornomaz@meadhunt.com
19.	Clayton Hamano	Illinois Construction & Environmental Consulting, Inc.		chamano@iceillinois.com
20.	Amy Rainwater	Gold Wave, Inc		arainwater@goldwaveinc.com

### STATE EMPLOYEES IN ATTENDANCE

1.	Diana Hennington	Illinois Tollway		dhennington@getipass.com
2.	Timothy Coleman	Illinois State Tollway Authority		tjcoleman@getipass.com
3.	Lynnette Robinson	Illinois Tollway		lrobinson@getipass.com
4.	Danna Hall	Illinois Tollway		dhall@getipass.com
5.	Meiyu Liu	ISTHA		mliu@getipass.com
6.	Vanessa Ramos	Illinois Tollway		vramos@getipass.com



## PRE-SUBMISSION CONFERENCE SIGN-IN

Bid Description:	PSB 23-1 Building for Success Webinar				
BidBuy Number:	23-557THA-ENGCO-B-34337	Solicitation Publication Date:	2/10/2023	Due Date:	
Vendor Conference Date & Time:	3/6/23 3:00pm	Conference Location:	WebEx		
Attendance is:	Not Mandatory				

### ATTENDEES

**PLEASE PRINT CLEARLY**

	NAME AND TITLE	COMPANY REPRESENTED	TELEPHONE	EMAIL ADDRESS
1.	Liviu Iordache	Wang Engineering, Inc		liordache@wangeng.com
2.	Bill Vavrik	ARA		wvavrik@ara.com
3.	Doug McClintic	Civil & Environmental Consultants		dmcclintic@cecinc.com
4.	Pete Mesha	Business		p_mesha@comcast.net
5.	Holly Ryan	Ciorba Group, Inc.		hryan@corba.com
6.	Allen Curry	Inner City		acurry@icutechassist.net
7.	Claire Williams	KDM Engineering		cwilliams@kdmengineering.com
8.	Timothy Farra	BLOOM COMPANIES LLC		tfarra@bloomcos.com
9.	Anand Sampath	ECS Midwest, LLC		asampath@ecslimited.com
10.	Brian Kulick	Kulick Juneau Associates, Inc., P.C.		bkulick@jaipc.com
11.	Joseph Kozial	Bravo Company Engineering, Inc		jkozial@bravocoeng.com
12.	Paul Kovacs	Bowman Consulting, Ltd.		pkovacs@bowman.com
13.	JoAnne Williams	Quality Touches 1 Corporation		qualitytouches1corp@gmail.com

## PRE-SUBMISSION CONFERENCE SIGN-IN

	NAME AND TITLE	COMPANY REPRESENTED	TELEPHONE	EMAIL ADDRESS
14.	Angelica Gal	Thomas Engineering Group, LLC		angelicag@thomas-engineering.com
15.	Umar Ahmad	NASHnal Soil Testing, LLC		uahmad@nstengr.com
16.	Tim Seibt	NASHnal Soil Testing, LLC		tseibt@nstengr.com
17.	Raymond Kumapley	SE3, LLC		rkumapley@se3.us
18.	Tony Rabadan	Rabadan H Inc DBA Appliance & Mechanical		service@appliancemechanical.com
19.	Ron Olson	1st Call Technical Services,		rolson@1stcall-technical.com
20.	Nida Ahmad	Nashnal Soil Testing Llc		nahmad@nstengr.com

### STATE EMPLOYEES IN ATTENDANCE

1.	Marcita Hinton	Procurement		mhinton@getipass.com
2.	Emina Hukic-Hamzic	Illinois Tollway		ehukic-hamzic@getipass.com
3.	Paul Murtagh	Tollway		pmurtagh@getipass.com
4.	Lilly Hashim	Illinois Tollway		lhashim@getipass.com
5.				
6.				

## PRE-SUBMISSION CONFERENCE SIGN-IN

Bid Description:	PSB 23-1 Building for Success Webinar				
BidBuy Number:	23-557THA-ENGCO-B-34337	Solicitation Publication Date:	2/10/2023	Due Date:	
Vendor Conference Date & Time:	3/6/23 3:00pm	Conference Location:	WebEx		
Attendance is:	Not Mandatory				

### ATTENDEES

**PLEASE PRINT CLEARLY**

	NAME AND TITLE	COMPANY REPRESENTED	TELEPHONE	EMAIL ADDRESS
1.	ABBAS KACHWALLA	AECOM		abbas.kachwalla@aecom.com
2.	TISHI ROBERTS	Roberts Landscaping Serv		tishi653@gmail.com
3.	Tom Nutter	PMCS		tom@pmcsconsulting.com
4.	Bridget Malinowski	AECOM		bridget.malinowski@aecom.com
5.	Margaret Jones	Inner-City Underwriting Agency		mjjones@icutechassist.net
6.	Cheronne Mayes	Inner-City Underwriting		cmayes@icutechassist.net
7.	Dr.Joe Puthen	Alert IT Solutions, Inc.		jputhen@alertitsolutions.com
8.	Cresy Padilla	JCV Transportation Inc		jcctransportinc@gmail.com
9.	Andrea McNeil	Andrea McNeil LLC		mcneil.andrea@gmail.com
10.	Catherine Carpenter	TranSmart, LLC		ccarpenter@transmartinc.com
11.	Sara Knight	Strata Earth Services, LLC		sara.knight@strataearth.com
12.	Josh Pifke	Mead & Hunt		joshua.pifke@meadhunt.com
13.	Meredith Krantz	Krantz Strategies		meredith@krantzstrategies.com

## PRE-SUBMISSION CONFERENCE SIGN-IN

	NAME AND TITLE	COMPANY REPRESENTED	TELEPHONE	EMAIL ADDRESS
14.	Suzanne Griffith	VEGA Partners LLC		fitz@vega-partners.com
15.	Stephen Vaughn	CERA Solutions		svaughn@cerasolutions.com
16.	Ashley Przybysz	Mead & Hunt		ashley.przybysz@meadhunt.com
17.	Karie Koehneke	Atlas Engineering Group, Ltd.		kkoehneke@aegroupltd.com
18.	Steve Kwon	Mead & Hunt s		teve.kwon@meadhunt.com
19.	Patrick Bagliere	Mead and Hunt		patrick.bagliere@meadhunt.com
20.	Brian Muzingo	Ewalt Great Lakes Engineering		bmuzingoewalt@gleng.net

### STATE EMPLOYEES IN ATTENDANCE

1.	
2.	
3.	
4.	
5.	
6.	

# PRE-SUBMISSION CONFERENCE SIGN-IN

Bid Description:	PSB 23-1 Building for Success Webinar		
BidBuy Number:	23-557THA-ENGCO-B-34337	Solicitation Publication Date:	2/10/2023
		Due Date:	
Vendor Conference Date & Time:	3/6/23 3:00pm	Conference Location:	WebEx
Attendance is:	Not Mandatory		

## ATTENDEES

**PLEASE PRINT CLEARLY**

	NAME AND TITLE	COMPANY REPRESENTED	TELEPHONE	EMAIL ADDRESS
1.	Florence Cox	CANDO Corp. Inc.		fcox@candocorp.net
2.	Greg Stukel	Bowman Consulting Group, Ltd		gstukel@bowman.com
3.	Andre Hammel	Inner-city		ahammel@icutechassist.net
4.	Donald Miller	Oneida Engineering Solutions		dmiller@oescgroup.com
5.	Thomas Gill	Thomas Engineering Group		tomg@thomas-engineering.com
6.	Javier Romero	RME		jromero@rme-i.com
7.	Valdes Burgess	S B Unlimited LLC		vb@burgessenterprises1.com
8.	tanya adams	Tollway GEC		tanya.adams@wsp.com
9.	Aubrey Tetreault	STV		aubrey.tetreault-folmsbee@stvinc.com
10.	lorena perez	Tollway		lorenaponce21@gmail.com
11.				
12.				
13.				