



# Illinois Tollway **DIVERSITY**

*Driving Economic Opportunities*

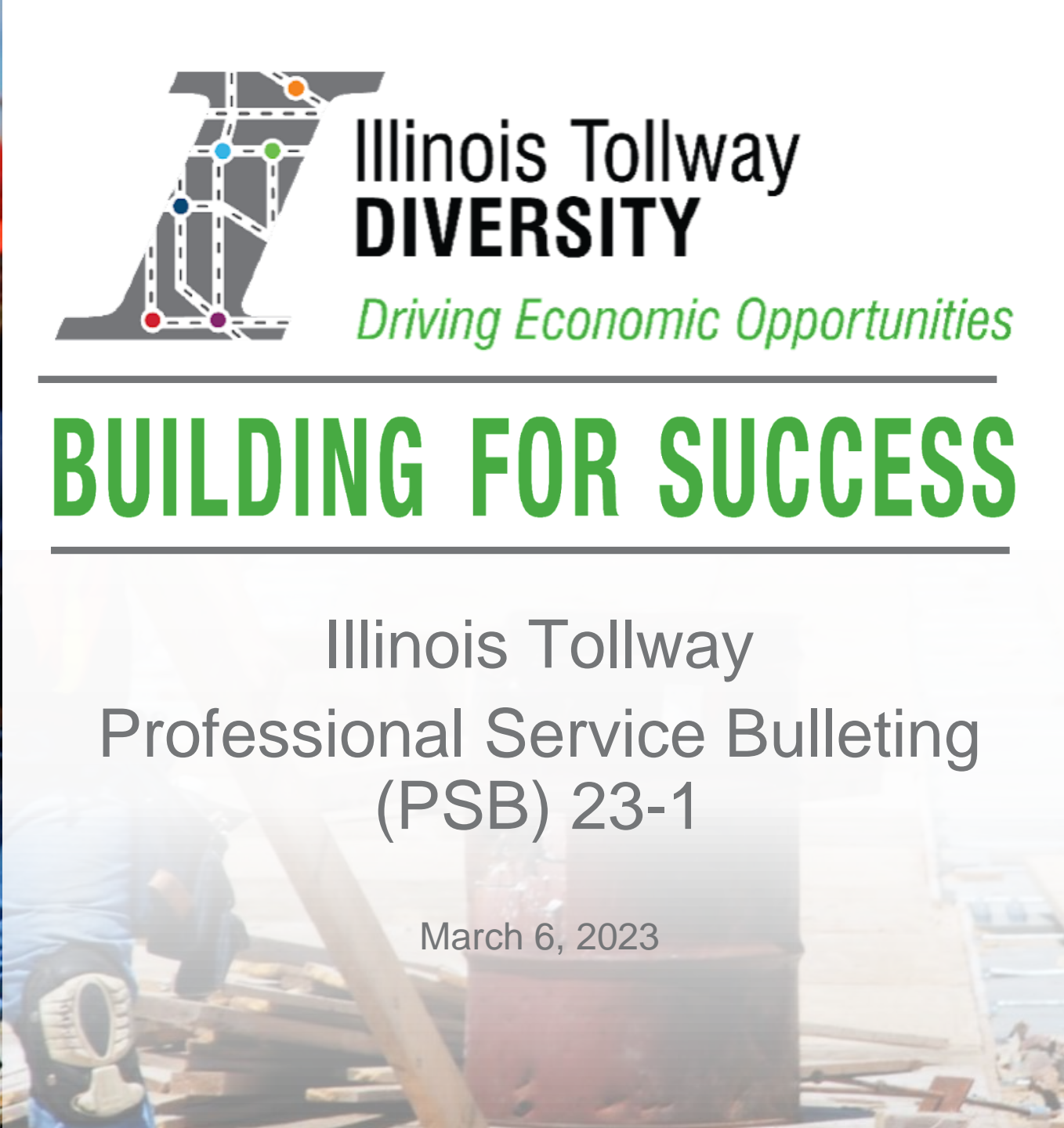
---

## **BUILDING FOR SUCCESS**

---

Illinois Tollway  
Professional Service Bulletin  
(PSB) 23-1

March 6, 2023



# HOUSEKEEPING RULES

---



## Housekeeping Rules

---



# WELCOME & INTRODUCTIONS

---

## Illinois Tollway Professional Service Bulletin (PSB) 23-1

---

**Rob Glaz**  
ITS Manager  
Illinois Tollway

**Cindy Williams**  
Deputy Chief of Program  
Implementation  
Illinois Tollway



# ITEM 1

## Intelligent Transportation System (ITS) Deployment and System Management (RR-21-9245R)

# General Description and Background

## Intelligent Transportation Systems (ITS)

- CCTV Cameras
- Vehicle Detectors
- Dynamic Message Signs (DMS)
- Lane Control Signs (LCS)
- Weigh-in-Motion (WIM)
- Roadway Weather Information Systems (RWIS)



# ITS EQUIPMENT GROWTH

## *ITS equipment deployed*

ITS device expansion 2016-2022				
Device type	Total	System expansion	Total	% Increase
	2016	2017 - August 2022	August 2022	2016-2022
Closed-circuit television	1,007	519	1,526	51.5%
Dynamic message signs	71	6	77	8.5%
Lane control signs	376	0	376	0%
Vehicle detection systems	350	122	472	35%
Roadway weather information systems	18	2	20	11%
Weigh-in-motion	5	0	5	0%
Flashing beacon	6	11	17	183%
Devices	1,457	657	2,603	



# Typical Tasks

## Program Management

- Oversee ITS network
- Manage ITS Maintenance contract

## ITS Maintenance and Device Configuration

- Configure various ITS devices
- Provide trouble ticket field investigation and remediation



# Key Personnel

## Project Manager

- Must be Illinois Licensed Professional Engineer

## TIMS Support Engineer

- Strong understanding of digital communications
- Responsible for monitoring network devices

## ITS Maintenance Logistics Technician

- Background in construction management, estimating, scheduling and inventory control






# Additional Expectations

## Field Support

- On-site support staff at our central office upon request
- Field technicians able to work on low-voltage networks
- Maintenance vehicles, tools and test equipment needed under contract
- Staff available on-call 24/7/365 as required by the Tollway, with an on-site response of two (2) hours, if required.





**ITEM 2**  
**Systemwide, Pavement Management, Technical Assistance, and Materials Engineering Design Support (MO-21-1281R)**

# MO-21-1281R

## Systemwide, Pavement Management, Technical Assistance, and Materials Engineering Design Support

- Pavement and Asset Management and Condition Monitoring
- Support Services

The collage features several key elements:

- Top Left:** A wide-angle view of a multi-lane highway under a cloudy sky.
- Top Right:** A close-up, vertical view of a textured pavement surface.
- Middle Left:** A road view showing a concrete curb and guardrail.
- Middle Center:** A central graphic with a purple and green background. Text includes: "PAVEMENT MANAGEMENT SYSTEM FOR THE ILLINOIS TOLLWAY", "2022 System Update Report", "FINAL REPORT", and contact information for The Illinois Tollway (2700 Ogden Avenue, Downers Grove, Illinois 60515, Tel: (830) 241-6800, Fax: (830) 241-6105).
- Middle Right:** A purple header for a "2021 Illinois Tollway Pavement Asset Management Plan - v15" over a photo of a traffic light intersection.
- Bottom Left:** A purple header for a "2021 Illinois Tollway Ramp Asset Management Plan - v2" over a photo of highway ramps with signs for "BUSINESS STATE ST 2 MILES", "WEST Wisconsin", "SOUTH TO Bloomington", and "EXIT 17 ONLY".
- Bottom Right:** A screenshot of the "Illinois Materials Inspection and Reporting System" (MIRS) login page. It includes the MIRS logo, the system name, and login fields for "Username", "Password", and "Remember me" (checked), with a "Log in" button and a "Forgot Password or Username?" link.



## Pavement and Asset Management and Condition Monitoring

- Annual collection of digital images and laser crack measurement system (LCMS) sensor data of all lanes, all directions, for the Tollway's mainline pavements (294 centerline miles, 2296 lane miles) with ramp pavements (476 ramps) included every other year.
- Calculate condition rating survey (CRS) values according to the established Illinois Department of Transportation methodology.
- Determine the remaining service life (RSL) for each homogenous Tollway pavement segment.
- Prepare an annual pavement management system report.
- Maintain the pavement asset management plan (PAMP) and the ramp asset management plan (RAMP).

## **Pavement and Asset Management and Condition Monitoring (cont.)**

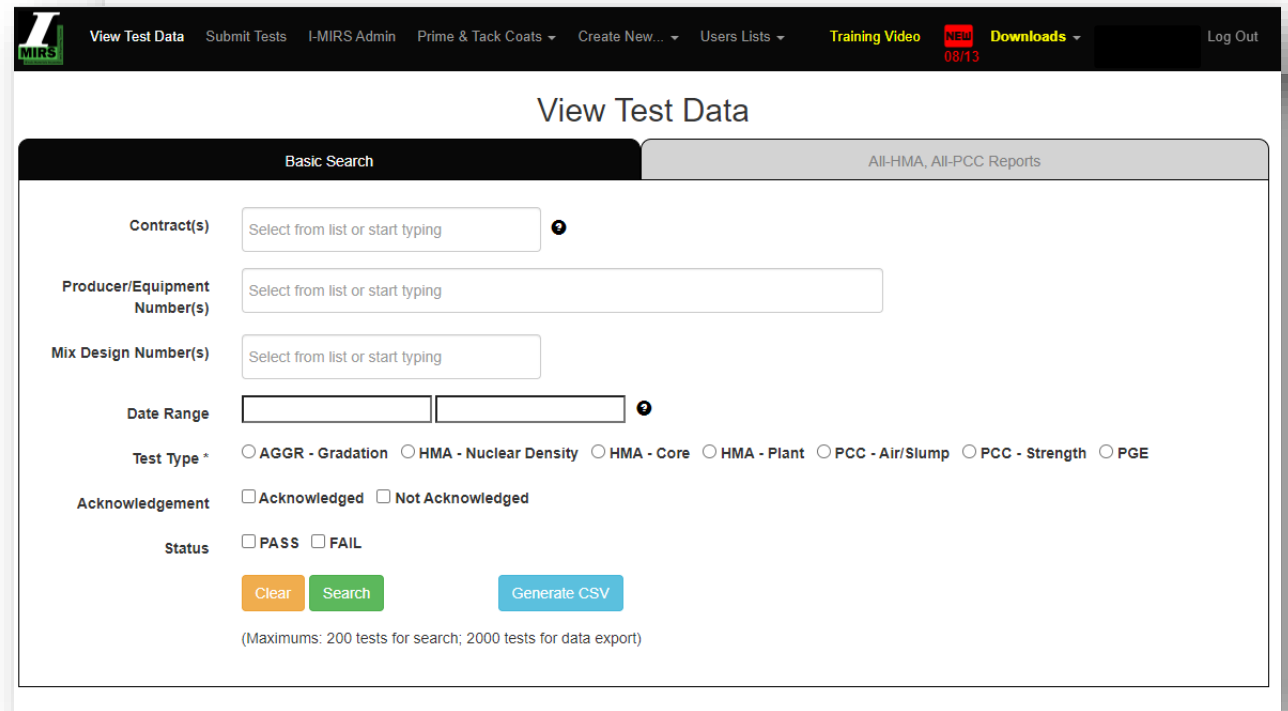
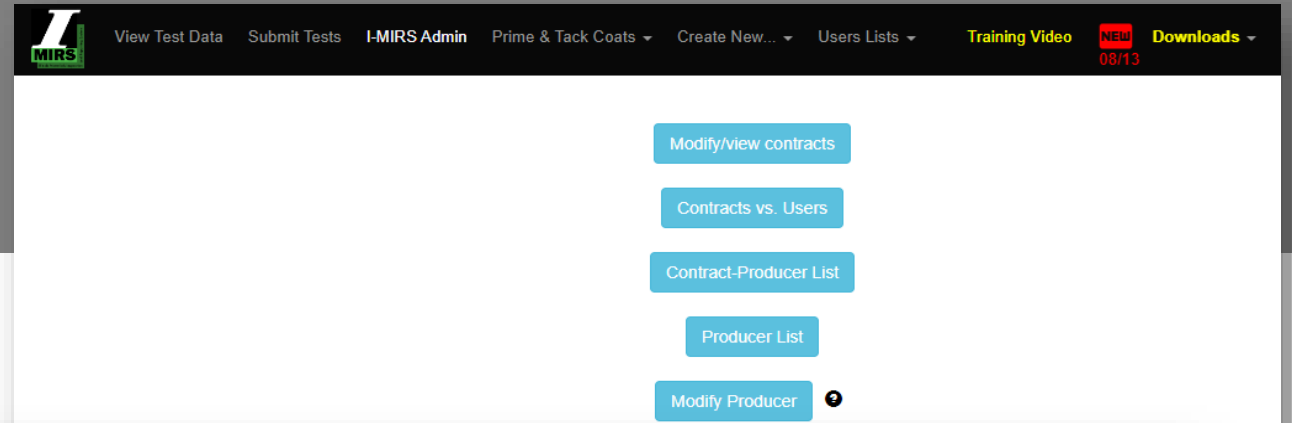
- Annually, process and deliver a complete set of digital images to the Tollway.
- Annually, measure all lane line (skip dash) in-place pavement markings for presence and retro reflectivity and provide recommendations for re-striping where necessary.
- Annually, evaluate smoothness across all mainline bridges and associated structural/pavement elements (approach and transitions).
- Biennially, or as requested, measure and evaluate Tollway pavement friction every 0.1 mile in both directions across the system.
- Maintain records or databases of existing roadway conditions, pavement designs, and provide technical assistance in these areas as requested.

# MO-21-1281R

## Support Services

- Maintain and manage the existing Illinois Materials Information and Reporting System (I-MIRS).
  - I-MIRS stores aggregate, asphalt, concrete, and tack coat test results for QC, QA, and IA.
- Provide an evaluation of current I-MIRS system to include upgrades or potential replacement to ensure proper QC/QA compliance.

[www.i-mirs.com](http://www.i-mirs.com)



# MO-21-1281R

## Support Services (cont.)

- Evaluate and report on the condition of assets maintained by Tollway maintenance forces via the Maintenance Quality Assurance (MQA) program, developed to identify and monitor the effectiveness of the Illinois Tollway's roadway maintenance efforts. Consists of biannual in-field evaluation of assets and the associated maintenance activities and providing ratings using existing Tollway rating manual and check sheets.
- Assist the Tollway with engineering research projects performed by others.
- Surveying of mainline bridge decks using GPR to determine the extent of deterioration and depth-to-steel reinforcement (quarter of the 389 bridges, annually).
- Monitor, evaluate and consult on new and existing pavement and pavement marking test sections and pilot projects.
- Periodic data takeoff and analysis to quantify and evaluate Tollway assets from vehicle imagery on as-needed basis.



# MO-21-1281R

## Support Services (cont.)

- Assist the Tollway in the development and refinement of pavement and related infrastructure design standards and construction specifications.
- Assist the Tollway in developing pavement and structural rehabilitation and reconstruction methods and material improvements based upon the latest research and performance.
- Assist with the Tollway's evaluation of sustainability of Tollway practices and projects via the Tollway's INVEST program and calculation of environmental impacts.
- Provide engineering support to assist the Tollway with design reviews, development and revisions to Special Provisions and Tollway Standards.
- Provide direct materials engineering support to Tollway Materials including full time on-site materials engineering support for field and office materials engineering tasks. The consultant will also coordinate activities and products with other consultants under contract with the Tollway.





# MO-21-1281R, Qualifications

## No IDOT prequalification for this item

### Team must demonstrate they are equipped and have experience with the following:

- Digital pavement survey vehicle that includes a LCMS to acquire high resolution 3D pavement profiles and a 360° panoramic imaging system
- Performing pavement condition surveys
- Falling weight deflectometer (as-needed)
- Vehicle mounted ground penetrating radar for pavement and bridge deck analysis
- Locked wheel friction tester
- Mobile and handheld pavement marking retro reflectometers



# MO-21-1281R, Qualifications (cont.)

## Must demonstrate experience using:

- AASHTO Pavement ME Design
- I-MIRS and/or demonstrated experience working in SQL RDS environment
- Pavement management software

## 20% D/M/WBE participation goal and 3% VOSB participation goal

*The Tollway will furnish to the selected consultant team all necessary background files, models, access to historic data, source code, manuals and relevant documentation to facilitate productive startup of services. Tollway will also provide required traffic control support for activities within the Tollway's right-of-way on a coordinated as-needed basis.*



# MO-21-1281R, Key Personnel

## Key Personnel

- Project manager\*
- Pavement design engineer\*
- Pavement management engineer
- On-site materials engineer
- I-MIRS user support liaison

*\*Must be a professional engineer. A professional engineer that is licensed in another state can be proposed for this role, but the individual(s) will need to be licensed in Illinois before performing work on this contract.*

**This project is scheduled to start in Fall 2023.**



# SUBMISSION via e-Builder

This is not an invitation for bids. Consultants properly prequalified for the projects listed herein may indicate their desire to be considered for selection by submitting an SOI to the Illinois Tollway via the e-Builder PSB 23-1 SOI process.

The Illinois Tollway follows the Qualifications Based Selection (QBS) process mandated by Illinois statute (30 ILCS 535): Architectural, Engineering, and Land Surveying Qualifications Based Selection Act) for selecting qualified Consultants under this PSB.



# SUBMISSION via e-Builder

## Section 1.2.1 PSB 23-1 SUMMARY

**Information for the e-Builder process for PSB 23-1 can be found in the Public Folder at:**

**<https://app.e-builder.net/public/PublicFolderView.aspx?FolderID={dc0355ee-4323-458e-91b5-547c6655b5f5}>**

**You will need the following before you can submit an SOI in e-Builder:**

- **e-Builder resources, including PSB SOI user manual, FAQ file, and videos (see Public Folder link above)**
- **Webinar Training (see Section 3.7 Useful Links for training webinar registration link)**
  - Training opportunities are currently scheduled for the following dates:
    - March 7, 2023: 1pm-2pm
    - March 10, 2023: 11am-12pm
- **e-Builder Login ID (see Section 3.4 Submittal Instructions)**
- **Firm Code Name (see Section 3.4 Submittal Instructions)**



# PSB SCHEDULE

- Last Day for Questions no later than March 7, 2023 at 4:30:00 pm Central Time
  - All questions related to this PSB must be submitted electronically through e-builder SOI mailbox at [PSB 23-1.01 Questions and RFIs@docs.e-builder.net](mailto:PSB_23-1.01_Questions_and_RFIs@docs.e-builder.net)
  - Answers will be addressed via Addendum published on the Tollway Website and the Illinois eProcurement site-BidBuy.
- Complete SOI's are due no later than March 17, 2023 at 4:30:00 pm Central Time including all required Attachments/Exhibits as specified in this PSB
  - All submittals for this PSB will be received through the Illinois Tollway's e-Builder PSB SOI process at: <https://app.e-builder.net/>.
- Selection Committee Meeting March/April 2023
- Estimated Board Approval May 2023
- Estimated Notice to Proceed July 2023



# DIVERSITY AND STRATEGIC DEVELOPMENT

## Programs

- ConstructionWorks
- Diversity Webinar Series
- Earned Credit Program
- Partnering for Growth Program
- ROCIP
- Small Business Initiative
- Technical Assistance Program

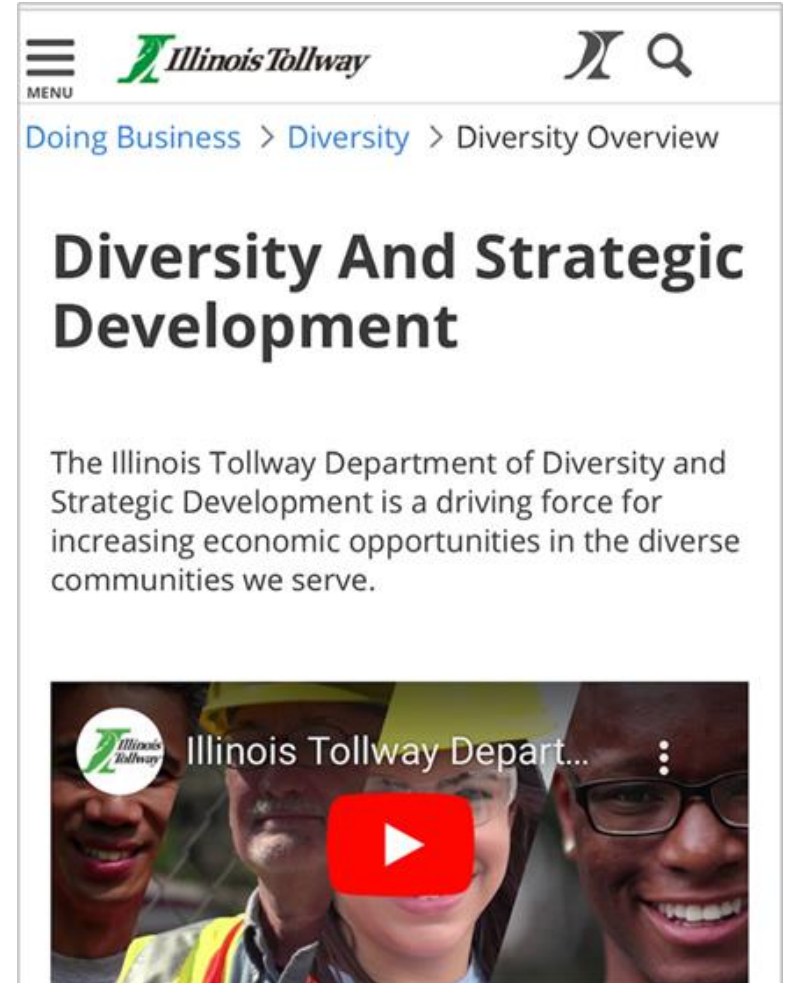
## Initiatives

- Virtual outreach sessions
- Training webinars
- Contracting opportunity emails

## Register for Tollway Diversity alerts!

- [lperez@getipass.com](mailto:lperez@getipass.com)

Visit [illinoistollway.com](http://illinoistollway.com) to get started



The screenshot shows the Illinois Tollway website's Diversity and Strategic Development page. At the top, there is a navigation bar with the Illinois Tollway logo, a search icon, and a menu icon. Below the navigation bar, the breadcrumb trail reads "Doing Business > Diversity > Diversity Overview". The main heading is "Diversity And Strategic Development". Below the heading, there is a paragraph of text: "The Illinois Tollway Department of Diversity and Strategic Development is a driving force for increasing economic opportunities in the diverse communities we serve." At the bottom of the screenshot, there is a video player with a red play button and a thumbnail image showing four diverse people smiling. The video title is "Illinois Tollway Depart...".



# THANK YOU