



# ILLINOIS TOLLWAY NEWS

**FOR IMMEDIATE RELEASE**  
**June 12, 2023**

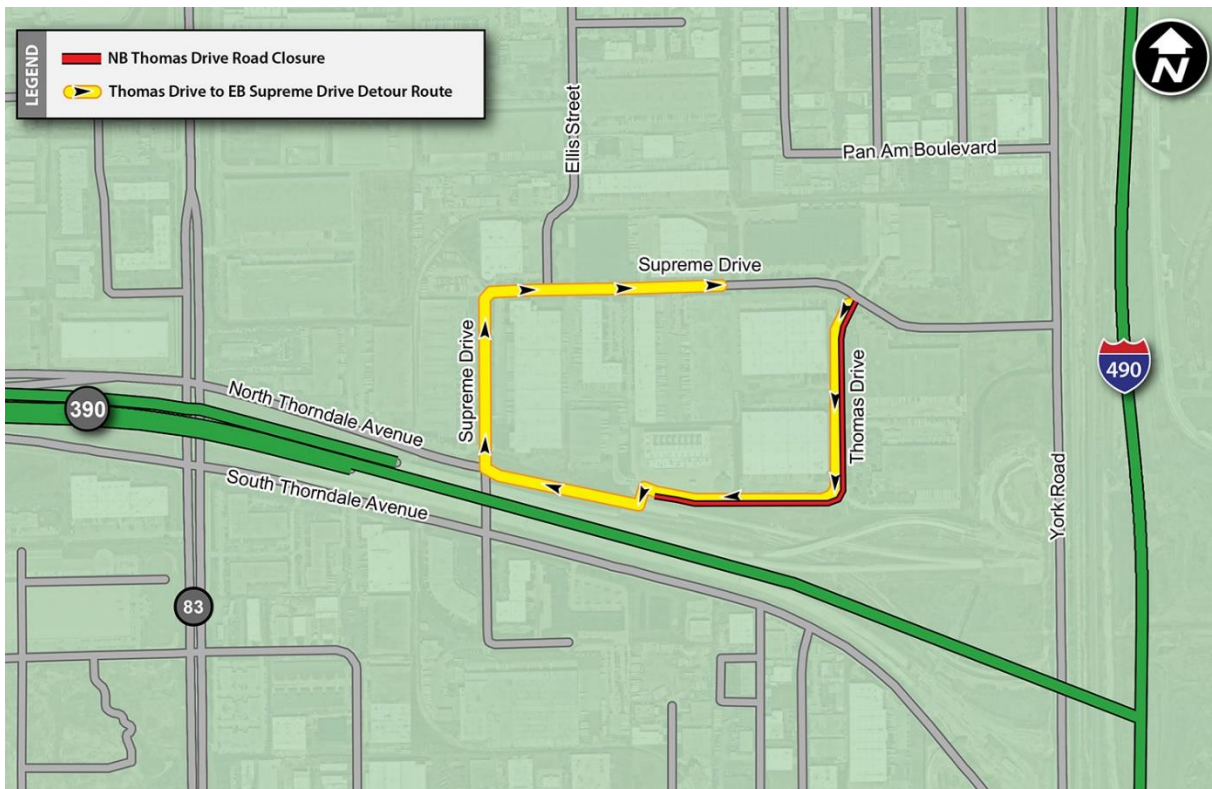
## **LONG-TERM CLOSURE, DETOUR SCHEDULED ON THOMAS DRIVE FOR I-490/IL 390 TOLLWAY INTERCHANGE PROJECT**

*Northbound Thomas Drive in Bensenville to close through fall for reconstruction*

**DOWNERS GROVE, IL** – The Illinois Tollway is scheduled to close northbound Thomas Drive, south of Supreme Drive in Bensenville, beginning next week for roadway reconstruction and drainage work as part of the I-490/Illinois Route 390 Tollway Interchange Project.

Electronic message signs and construction signage will be put in place to alert drivers in advance of the roadway closure and detour, which are necessary to safely accommodate a work zone. Up-to-date closure information will be posted on the Tollway website in the [Daily Construction Alert](#). All work is weather dependent.

Beginning Monday, June 19, Thomas Drive will be closed to northbound traffic through fall. A detour will be posted routing traffic south and west to Supreme Drive back to Thomas Drive. Access to all businesses will remain open via southbound Thomas Drive during construction.



Work in this area is being coordinated with DuPage County and Village of Bensenville, as well as local fire and police departments.

The Illinois Tollway is building a new, full-access interchange that will connect the new I-490 Tollway to the Illinois Route 390 Tollway and provide access to York Road, Irving Park Road, as well as direct access into and out of O'Hare International Airport.

The \$340 million project includes construction of three miles of I-490 Tollway mainline roadway along with 16 ramps and 15 bridges to deliver full mobility on the west side of the airport. The new I-490/IL 390 Interchange is scheduled to be complete by the end of 2025.

Construction updates, project information, maps and detour information for work that is part of the I-490/Illinois Route 390 Tollway Interchange Project are available in the Projects section on the Tollway's website at [www.illinoistollway.com](http://www.illinoistollway.com).

### **Work Zone Safety**

Construction zone speed limits are in effect in all construction zones 24/7 and drivers should continue to watch for changing traffic patterns and use caution, especially when workers are present.

The Illinois Tollway reminds motorists that the "Move Over Law" requires motorists to change lanes or to slow down and proceed with caution when passing any vehicle on the side of the road with hazard lights activated. If you see flashing lights ahead, please move over or slow down.

Illinois State Police have zero tolerance for drivers speeding in work zones or failure to comply with the Move Over Law. The minimum penalty for speeding in a work zone is \$250 with up to a \$25,000 fine and a 14-year jail sentence for hitting a roadway worker. Penalties for failure to slow down or move over for a vehicle on the shoulder with flashing lights includes up to a \$10,000 fine, 2-year suspension of driving privileges and jail time, in extreme cases.

### **About Move Illinois**

The Illinois Tollway's 15-year, \$14 billion capital program, *Move Illinois: The Illinois Tollway Driving the Future*, is improving mobility, relieving congestion, reducing pollution, creating as many as 152,000 jobs and linking economies throughout the region. The first 11 years of *Move Illinois* are on schedule and within budget, delivering the rebuilt and widened Jane Addams Memorial Tollway (I-90) as a state-of-the-art 21<sup>st</sup> century corridor and opening a new interchange connecting the Tri-State Tollway (I-294) to I-57. Progress continues on projects addressing the remaining needs of the existing Tollway system, delivering the Elgin O'Hare Western Access Project and reconstruction of the Central Tri-State Tollway (I-294).

### **About the Illinois Tollway**

The Illinois Tollway is a user-fee system that receives no state or federal funds for maintenance and operations. The agency maintains and operates 294 miles of roadways in 12 counties in Northern Illinois, including the Reagan Memorial Tollway (I-88), the Veterans Memorial Tollway (I-355), the Jane Addams Memorial Tollway (I-90), the Tri-State Tollway (I-94/I-294/I-80) and the Illinois Route 390 Tollway.

###