



ILLINOIS TOLLWAY NEWS

FOR IMMEDIATE RELEASE
March 25, 2022

WORK BEGINS TO RECONFIGURE OGDEN AVENUE INTERCHANGE AS PART OF THE CENTRAL TRI-STATE TOLLWAY (I-294) PROJECT

*Bridge work and ramp reconfiguration will require ramp detours,
as well as lane closures on I-294 and Ogden Avenue*

DOWNERS GROVE, IL – The Illinois Tollway is beginning work on the Ogden Avenue Interchange to provide improvements on Ogden Avenue and the bridge over I-294, as well as reconfigure ramps on the east side of I-294 to improve access and traffic flow.

The project will include reconstruction of the ramp connecting northbound I-294 to eastbound Ogden Avenue, as well as relocation of access from Ogden Avenue to northbound I-294 including bridge repairs, construction of a new left turn lane on eastbound Ogden Avenue and installation of a new traffic signal.

Work is beginning with traffic shifts and lane closures on Ogden Avenue and I-294, and ramp closures with detours will be needed during construction. Delays are expected.

During the week of March 28, temporary overnight lane closures in both directions on I-294 under Ogden Avenue will be scheduled between 8 p.m. and 5 a.m. for bridge abutment work and beam repairs.

During the week of April 4, long-term lane closures are anticipated to begin on Ogden Avenue between Central Avenue in Western Springs and Elm Street in Hinsdale with at least one lane in each direction remaining open to traffic. The lane closures are necessary to safely accommodate traffic on the Ogden Avenue Bridge and provide a work zone for bridge repair, median work and ramp pavement reconstruction. Lane closures on Ogden Avenue will continue throughout 2022 and delays are expected.

Full ramp closures with detours will also be needed throughout the project, and one or more could be scheduled to begin as traffic shifts are put in place. During work to repair the Ogden Avenue Bridge and prepare for new access to the Tollway, short-term ramp closures may be in place for up to seven days and detours will be posted.

The short-term ramp closures will include eastbound Ogden Avenue to northbound I-294, westbound Ogden Avenue to southbound I-294, northbound I-294 to westbound Ogden Avenue and southbound I-294 to eastbound Ogden Avenue. In addition, a long-term closure of the ramp carrying westbound Ogden Avenue to northbound I-294 ramp detour is scheduled for later this year.

Electronic message signs and construction signage will be put in place in advance to alert drivers to changes in traffic patterns and detours throughout construction. Up-to-date closure and detour information will be posted on the Tollway website and in the [Daily Construction Alert](#). All work is weather dependent.

Bridge work and ramp access improvements are scheduled to be complete by the end of the year, with work in the area continue into 2025 as part of the rebuilding and widening of I-294.

-more-

Construction in this area is being coordinated with the Illinois Department of Transportation, Village of Hinsdale, Village of Oak Brook, Village of Western Springs, Cook County Department of Transportation, DuPage County Division of Transportation, Forest Preserves of Cook County, Oak Brook Park District, as well as local fire and police departments.

Information about the Ogden Avenue Interchange Project including maps and construction updates is available on the Tollway's website at www.illinoistollway.com in the Projects section.

The Illinois Tollway is investing \$8.9 million to reconfiguring the Ogden Avenue Interchange to improve mobility and traffic flow for local drivers and Tollway customers. Currently up to 40,000 vehicles use the interchange daily with up to 33,600 vehicles traveling on Ogden Avenue in the area

To accommodate the reconstruction and widening of the Central Tri-State Tollway, the Ogden Avenue Interchange will be reconfigured from a cloverleaf design to a partial cloverleaf design. The Illinois Tollway is combining ramps on the east side of I-294 to create one signalized access ramp from Ogden Avenue to northbound I-294 and the ramp connecting northbound I-294 to eastbound Ogden Avenue will be relocated with access control at the new traffic signal.

Improvements on Ogden Avenue will include repairs and median reconstruction on the existing bridge over I-294. In addition, on eastbound Ogden Avenue a new left turn lane will be constructed to provide access to northbound I-294 and the merge lane will be extended to provide vehicles exiting the Tollway with additional distance to merge. The project also includes noisewall construction and drainage and lighting improvements and landscaping.

The \$4 billion Central Tri-State Tollway (I-294) Project is reconstructing and widening the roadway between Balmoral Avenue and 95th Street to provide congestion relief, update old infrastructure to meet current and future transportation demand and address regional needs. This work is part of the Tollway's 15-year, \$14 billion capital program, *Move Illinois: The Illinois Tollway Driving the Future*. More than 220,000 vehicles use the Central Tri-State Tollway daily.

Work Zone Safety

Construction zone speed limits are in effect in all construction zones 24/7 and drivers should continue to watch for changing traffic patterns and use caution, especially when workers are present. On I-294, a 45 mph work zone speed limit is in effect throughout the construction season. On Ogden Avenue, a 35 mph work zone speed limit is in effect.

The Illinois Tollway reminds motorists that the "Move Over Law" requires motorists to change lanes or to slow down and proceed with caution when passing any vehicle on the side of the road with hazard lights activated. If you see flashing lights ahead, please move over or slow down.

Illinois State Police have zero tolerance for drivers speeding in work zones or failure to comply with the Move Over Law. The minimum penalty for speeding in a work zone is \$250 with up to a \$25,000 fine and a 14-year jail sentence for hitting a roadway worker. Penalties for failure to slow down or move over for a vehicle on the shoulder with flashing lights includes up to a \$10,000 fine, 2-year suspension of driving privileges and jail time, in extreme cases.

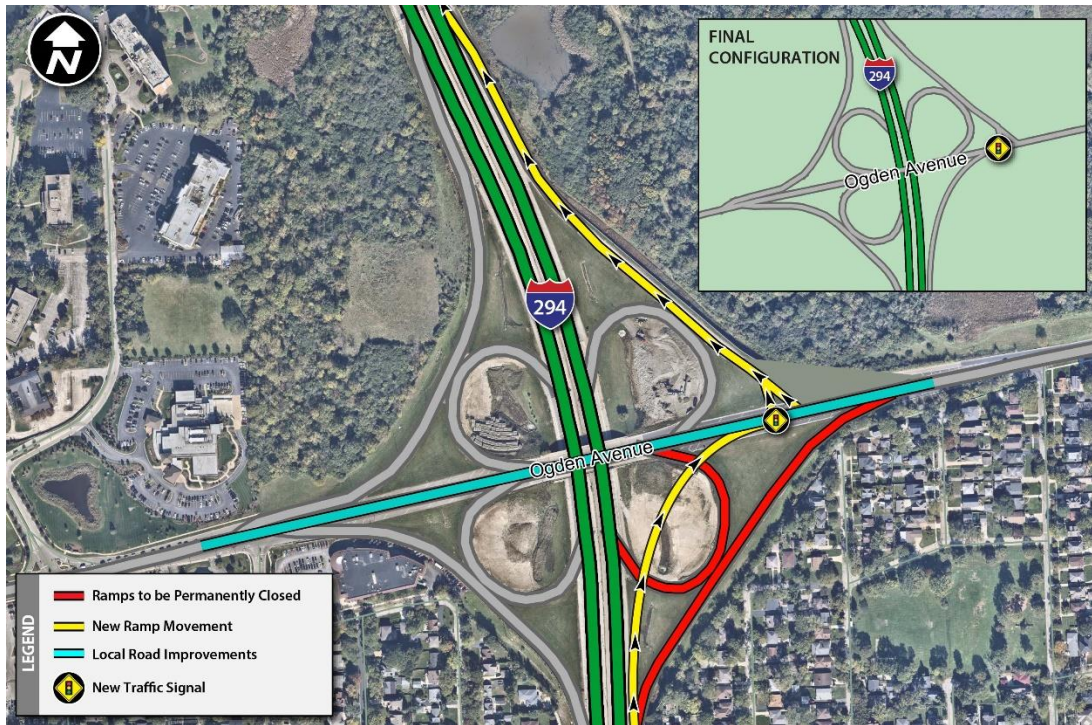
About Move Illinois

The Illinois Tollway's 15-year, \$14 billion capital program, *Move Illinois: The Illinois Tollway Driving the Future*, is improving mobility, relieving congestion, reducing pollution, creating as many as 120,000 jobs and linking economies throughout the region. The first 10 years of *Move Illinois* is on schedule and within budget, delivering the rebuilt and widened Jane Addams Memorial Tollway (I-90) as a state-of-

the-art 21st century corridor and opening a new interchange connecting the Tri-State Tollway (I-294) to I-57. Progress continues on projects addressing the remaining needs of the existing Tollway system, delivering the Elgin O'Hare Western Access Project and planning for emerging projects, including reconstruction of the Central Tri-State Tollway (I-294).

About the Illinois Tollway

The Illinois Tollway is a user-fee system that receives no state or federal funds for maintenance and operations. The agency maintains and operates 294 miles of roadways in 12 counties in Northern Illinois, including the Reagan Memorial Tollway (I-88), the Veterans Memorial Tollway (I-355), the Jane Addams Memorial Tollway (I-90), the Tri-State Tollway (I-94/I-294/I-80) and the Illinois Route 390 Tollway.



###