

The logo for MOVE ILLINOIS is a square with a black top half containing the words "MOVE" and "ILLINOIS" in white, bold, sans-serif font. The bottom half is split diagonally from the top-left to the bottom-right, with a green triangle on the left and a white triangle on the right. A dashed grey line representing a road with a white center line runs diagonally across the white triangle.

**MOVE  
ILLINOIS**

A nighttime photograph of a multi-lane highway under construction. The scene is illuminated by streetlights and the headlights of vehicles. Orange traffic cones are placed along the right side of the road, indicating a construction zone. Several cars and trucks are visible on the road, including a white truck with "ROBERT'S" and "425-1700" on its side in the foreground. The sky is a deep blue and purple, suggesting dusk or dawn.

***MOVE ILLINOIS***  
**QUARTERLY  
MEETING**

**MARCH 8, 2021**

# AGENDA

***Move Illinois* Progress and Expectations**

**Doing Business with the Tollway**

**Commitment to Diversity**

**Addressing the Barriers to Participation**





# *MOVE ILLINOIS* PROGRESS AND EXPECTATIONS



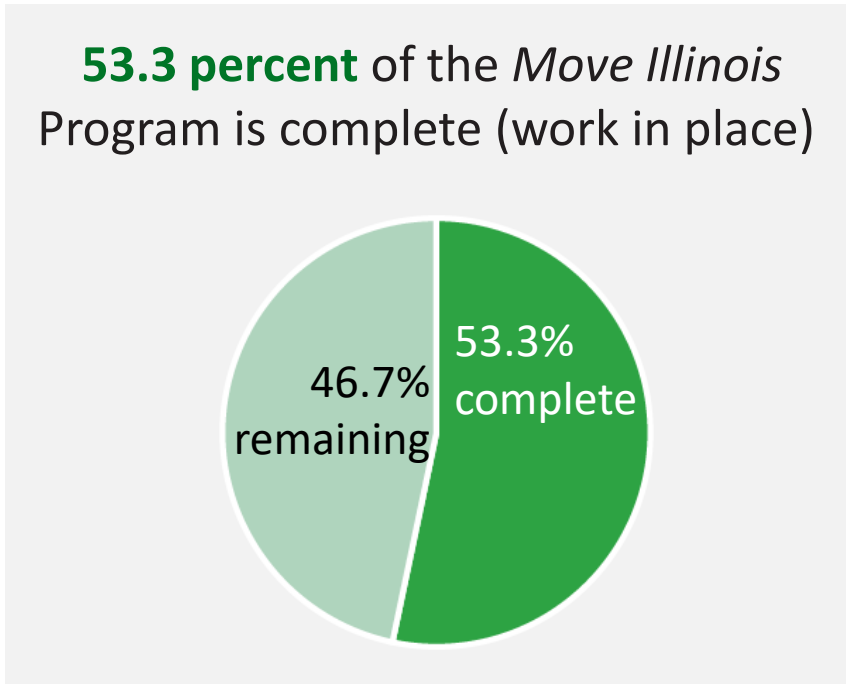
# MOVE ILLINOIS PROGRAM PROGRESS

2012 through January 2021

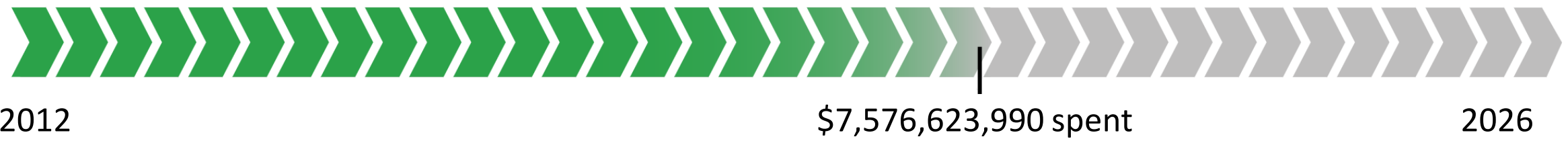
## MOVE ILLINOIS PROGRAM BUDGET OVERVIEW (2012-2020)

**\$9.9 billion** or **69.7 percent** of the program budget committed

- **\$5.6 billion**, or approximately **39.5 percent**, in construction work
- **\$2.6 billion**, or approximately **18.0 percent**, in consultant services
- **\$1.6 billion**, or approximately **11.6 percent**, in other costs (utilities, ROW, misc.)
- **\$190.2 million** in reimbursement agreements has been approved; reducing overall program costs by **1.3 percent**



## PROGRAM EXPENDITURES



# 2021 PROFESSIONAL SERVICES OPPORTUNITIES

## *Tri-State Tollway (I-294) and I-490 Tollway*

### **I-490 TOLLWAY PROJECT**

- Design Services
- Environmental/Geotechnical Upon Request
- Construction Management Services



### **CENTRAL TRI-STATE TOLLWAY PROJECT**

- Design Services
- Construction Management Services



### **I-294/I-57 INTERCHANGE PROJECT**

- Design Services
- Construction Management Upon Request



**AN ESTIMATED \$232 MILLION SCHEDULED IN PROFESSIONAL SERVICES ADVERTISEMENTS FOR 2021**

# 2021 PROFESSIONAL SERVICES OPPORTUNITIES

## *Across the System*

### JANE ADDAMS MEMORIAL TOLLWAY

- Construction Management –  
Bypass U.S. 20 Bridge Reconstruction



### SYSTEMWIDE

- Design Upon Request
- Construction Upon Request
- Pavement Roadway Management
- Geotechnical Upon Request
- Environmental Studies
- Subsurface and Utility Assistance Services
- General Engineering Consultant



**AN ESTIMATED \$232 MILLION SCHEDULED IN PROFESSIONAL SERVICES ADVERTISEMENTS FOR 2021**

# UPCOMING CONSTRUCTION ADVERTISEMENTS

## *Tri-State Tollway (I-294) and I-490 Tollway*

### I-490 TOLLWAY PROJECT

- Railroad track access relocation and bridge construction
- I-490/IL 390 Interchange construction
- Local road improvements
- Advance earthwork and drainage



### CENTRAL TRI-STATE TOLLWAY PROJECT

- Pedestrian bridge reconstruction
- I-290/I-88 Interchange at I-294 ramp construction
- Advanced shoulder and crossover construction
- Hinsdale Oasis Bridge removal
- Mile Long Bridge watermain construction
- Ogden Avenue Interchange construction



### I-294/I-57 INTERCHANGE PROJECT

- I-57 CSX Railroad Bridges



AN ESTIMATED **\$518 MILLION** SCHEDULED IN **CONSTRUCTION ADVERTISEMENTS FOR 2021**

# UPCOMING CONSTRUCTION ADVERTISEMENTS

## *Across the System*

### JANE ADDAMS MEMORIAL TOLLWAY

- Pavement repairs at Illinois Route 53



### SYSTEMWIDE

- Various landscaping
- Various toll plaza improvements
- Various electrical improvements
- Various grading and drainage improvements
- Various roadway improvements



AN ESTIMATED **\$518 MILLION** SCHEDULED IN **CONSTRUCTION ADVERTISEMENTS FOR 2021**



# ***MOVE ILLINOIS* PROGRAM EXPECTATIONS**

## **COLLABORATION**

**Several parties must work together to achieve project milestones**

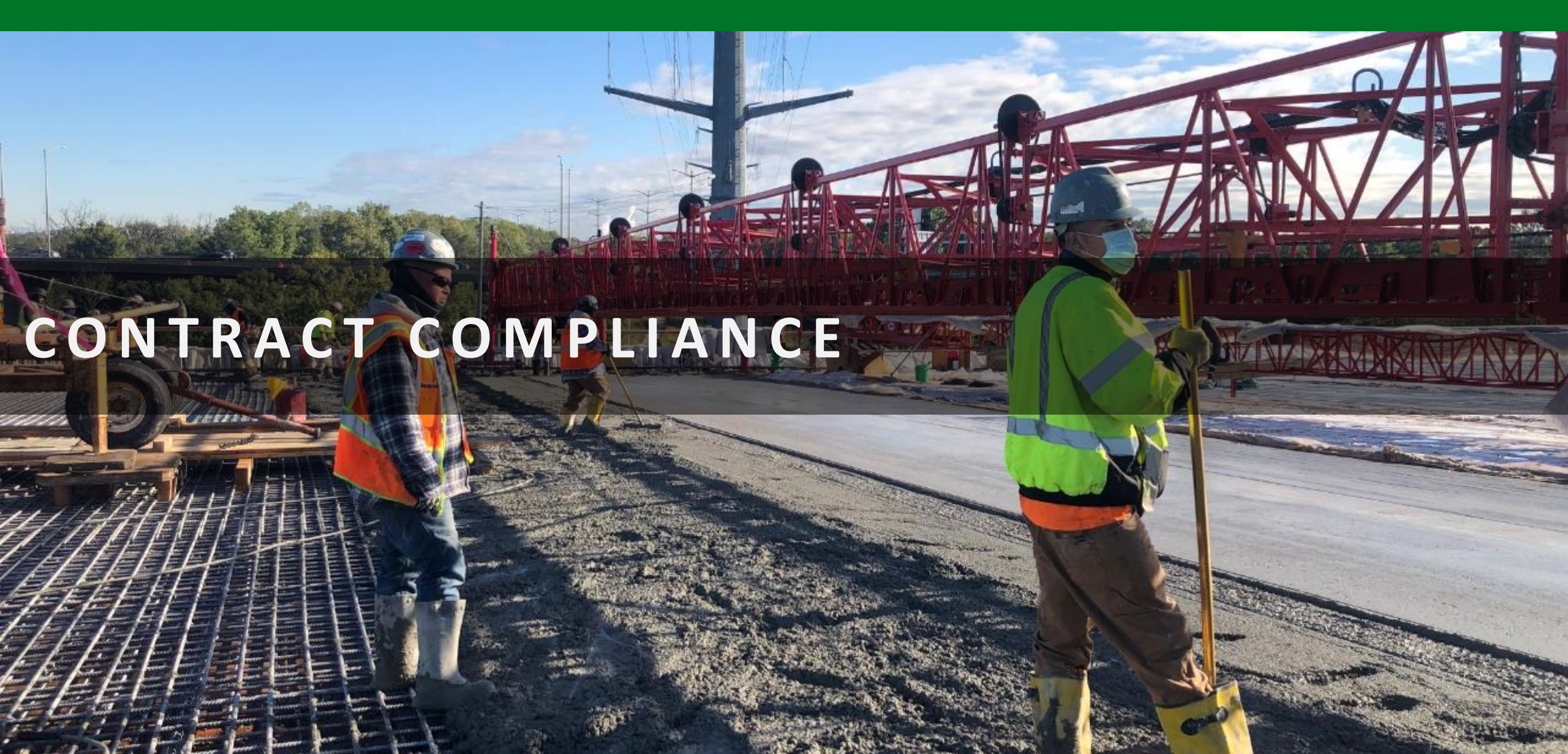
**Consistent communications ensures project success**

## **SAFETY**

**Unwavering commitment to customers, workers, and Tollway personnel**

**National Work Zone Awareness Campaign**

**Stay in your vehicle!**



# CONTRACT COMPLIANCE



# CONTRACT COMPLIANCE

## Overview

### Activities include:

- Monitoring diversity goals on contracts
- Conducting site visits to monitor compliance with the Tollway's DBE/VOSB, EEO, and prevailing wage requirements
- Reviewing systems to assess progress toward meeting goals

### Tools and processes:

CAPTURE

B2GNOW

EEO HOURS

PAYMENTS AND CERTIFIED PAYROLL  
TRANSCRIPTS



# REVISIONS TO PAYROLL SUBMISSION

*Clarifies procedures for filing certified payrolls*

## Report Directly to the Illinois Dept. of Labor

- <https://www2.illinois.gov/idol/Laws-Rules/CONMED/Pages/certifiedtranscriptofpayroll.aspx>

## EEO Hours in the Capture System

- <http://www.tollwaydiversitycapture.com>

## Transcripts Uploaded to B2GNow

- Prior month's submissions due by the 25<sup>th</sup>
- <https://iltollway.diversitysoftware.com/>

For questions related to the bulletin contact: [ContractCompliance@getipass.com](mailto:ContractCompliance@getipass.com)

## CONSTRUCTION BULLETIN 20-04

[illinoistollway.com/doing-business/construction-engineering/manuals-processes-guidelines](http://illinoistollway.com/doing-business/construction-engineering/manuals-processes-guidelines)

*Issued December 21, 2020*



# CONTRACT COMPLIANCE

## *Capture Software*

### **Allows:**

- Primes to enter EEO hours for the project
- Primes to run EEO reports
- Contractors to have multiple sign-ins for staff



## **Diversity Program Capture**

**Log In**

User Name:

Password:

# CONTRACT COMPLIANCE

## B2GNow Payroll Transcript Uploads

Reach out to the project Contract Compliance Analyst for training, questions, reports and support

Respond quickly to requests from analysts to ensure timely payments



Navigation menu with icons for Home, View, Search, Message, Settings, Help & Support, and Logoff. Includes links for Show All and Hide All.

### Compliance Audit: Audit Notice for August 2020

Contract Main | View Contract | Subcontractors | Compliance Audit List | Compliance Audit S

Illinois Tollway  
1234C-1234: Test Contract GP  
Prime: G.Perez

This is an audit notice for the contract listed below. Submit a response for each item listed below. It is possible that some actions are not available at a specific time due to pending reports from

#### Compliance Audit Information

Compliance Audit Period	August 2020
Date & Time Posted	Local: 9/4/2020 8:03:03 AM CDT System: 9/4/2020 8:03:03 AM CDT

Submit a response for each item listed below by clicking each link. It is possible that some performing prime contractor your responsibility is to report payments made to subcontractor self-performance on the contract.

#### Compliance Audit Actions

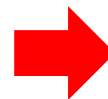
Category	Action R
Self Performing Prime Contractor	<a href="#">Report 1 subcontractor paym</a>

#### Compliance Officer Information

Contact Person	<a href="#">Graciela Perez</a>
Organization	Illinois Tollway
User Number	<a href="#">30000356-0026</a>

#### Buyer/Pro

Contact Perso
Department
User Number



# CONTRACT COMPLIANCE

*B2GNow*

**Multiple users can login simultaneously**

**Contractors can add additional users for their organization**

**Certified Payroll Transcripts can be uploaded when reporting subcontract payments**

- If payments are reported before the documents, audit will be locked

**Prime contractors can submit Certified Payroll Transcripts via B2GNow secure message**



# CONTRACT COMPLIANCE

## Capture System



### Diversity Program Capture

My Contracts ▶ Selected Contract (I-16-7474) ▶ Help/Contact

Diversity Program Payments

1 EEO Workforce Info

2 Reports

List D~~x~~ / 2114

1 List EEO Hours

List EEO Quarterly Supplements

2 Reports

All new Diversity payments must be submitted in B2G

1 “EEO Workforce Info” tab and “List EEO Hours” button link to the same URL.

2 “Reports” tab and “Reports” button link to the same URL



#### Capture Application Request for Log-in/Password

\_\_\_\_\_ (Title)  
 (Print the name of signatory party)  
 request a Login and Password for the DBE/EEO Capture Application for  
 Construction Manager  Prime Contractor  
 (company name) \_\_\_\_\_

**Request Type:**  New User – or –  I need to add or remove contracts from my existing ID.  
 My email address is: \_\_\_\_\_ (only for new user).

I have the responsibility to review DBE/EEO data for the Tollway on contract(s):

# _____ [ ] add [ ] remove	# _____ [ ] add [ ] remove	# _____ [ ] add [ ] remove
# _____ [ ] add [ ] remove	# _____ [ ] add [ ] remove	# _____ [ ] add [ ] remove

Any party reviewing this DBE/EEO data must certify that they have the authority to provide the information contained therein and that the information is complete and accurate.

Print Name: \_\_\_\_\_ Date \_\_\_\_\_  
 User Signature: \_\_\_\_\_ Date \_\_\_\_\_  
 Print Company Name: \_\_\_\_\_ Date \_\_\_\_\_

Affidavit: For and on behalf of \_\_\_\_\_,  
 \_\_\_\_\_ its duly authorized agent with full power  
 (Printed Name of Agent)  
 and authority to make this certification, represents, warrant and certify to the Illinois Tollway that this Disclosure is complete and accurate.

Title of Agent:	
Signature of Agent:	
Date of Signature:	

For ease of response, please e-mail this request from the email account listed above to:  
[ContractCompliance@getipass.com](mailto:ContractCompliance@getipass.com)





# Illinois Tollway **DIVERSITY**

*Driving Economic Opportunities*



# PARTNERING FOR GROWTH PROGRAM

## Overview

- ✔ Encourages contractors and consultants to assist small, diverse and veteran-owned businesses in remaining self-sufficient, competitive and profitable
- ✔ Flexible agreements allow firms experience on active contracts (professional services) or work together without a contract (construction)
- ✔ Tollway provides assistance with agreements (construction)



**PARTNERING for GROWTH**

POWERED BY THE ILLINOIS TOLLWAY

*Taking your Business to the Next Level*

# PARTNERING FOR GROWTH PROGRAM

## *Accomplishments and Future Improvements*

### ACCOMPLISHMENTS

**30**

Protégé firms  
awarded  
Tollway prime  
contracts



**170**

Total  
agreements  
to date



### FUTURE IMPROVEMENTS

**Award virtual bid credits to protégés (construction)**

**Streamline paperwork (both)**

**Participant surveys to incorporate lessons learned (construction)**

**New software to track and monitor agreements**

# SMALL BUSINESS INITIATIVE

## Overview



**Identifies select construction contracts, only small businesses can perform as primes or subcontractors**



**Establishes diversity goals for select construction contracts, up to 40% self performance goals**

# SMALL BUSINESS INITIATIVE

## *Requirements*

**All primes and subs must be registered Illinois Small Businesses**

**Firms must have annual gross revenues of \$14 million or less**

**Primes and subs must complete Tollway application and be registered in the Tollway SBI to bid on SBI contracts**



# SMALL BUSINESS INITIATIVE

## PROJECT DESCRIPTIONS

- Demolition, electrical, vertical structural
- Landscaping, grading/drainage, general roadway



## Small Business Contract Tiers

Tier 1	> \$1 million	Tier 2	\$1-3 million	Tier 3	\$3-5 million
--------	---------------	--------	---------------	--------	---------------

# PLAZA IMPROVEMENTS

The Illinois Tollway is seeking **registered small businesses** to complete plaza improvements. The work will consist of nine contracts of similar size and scope throughout the system.

Work includes pavement marking removal and installation, sign removal and installation, electrical work, pavement rehabilitation, maintenance of traffic and miscellaneous work.

## INFORMATION ON CONTRACTS

<b>Expected Contract Ranges</b>	\$400,000 – \$2,000,000
<b>Expected Advertisements</b>	February 2021 – March 2021
<b>Anticipated Notice to Proceed</b>	May 2021 – July 2021
<b>Estimated Work Period</b>	May 2021 – November 2021
<b>Insurance Liability Coverage</b>	Tollway-supported (ROCIP)
<b>IDOT Prequalification</b>	Waived



Advertisement dates and bid opening dates are included in the Tollway's Construction Bid Letting Schedule.

[VIEW THE BID LETTING SCHEDULE](#)

# WHAT WORK IS NEEDED



## Sign Installation and Removal

## Pavement and Infrastructure Improvements

## Electrical Work

## Pavement Marking Installation and Removal

## Maintenance of Traffic During Construction

*Removal and replacement of various signs including signs on overhead sign trusses over mainline traffic*

*Improve existing infrastructure including pavement, conduits, piping, wiring, traffic signals, accessories and supports*

*Complete all work and provide material for electrical equipment on canopy and islands including conduit, cable and lane controller installation, and electrical testing*

*Waterblast removal of existing pavement marking and installation of multi-polymer pavement marking of varying widths*

*Provide all traffic control devices including signs, vertical panels, portable message signs, barricades, and other materials and devices necessary to perform the work*



# TECHNICAL ASSISTANCE PROGRAM

## Overview



**Provides comprehensive, customized business development assistance to small, diverse and veteran-owned firms for increased business stability and growth in the transportation-related construction industry**



**Services are customized to the firms' assessed strengths, challenges and needs**



**Programs are self-paced or cohort-based (collaborative group setting)**



**TECHNICAL ASSISTANCE**

POWERED BY THE ILLINOIS TOLLWAY

*Equipping Businesses for Success*

# TECHNICAL ASSISTANCE PROGRAM

## *Key Highlights and Accomplishments*

750

Firms assisted since 2016

50

Unique firms awarded  
Tollway contracts

105

Firms registered as small businesses  
within the last four months (required  
to do business with the Tollway)



# BUILDING FOR SUCCESS WEBINAR SERIES

## Overview

Highlights key Tollway programs and initiatives

Provides strategies for improving business operations

Leverages relationships with strategic partners/sister agencies

Sessions are recorded and posted online as resources for firms doing business with the Tollway

*Mondays at 3:00 p.m.*

*Advanced registration required*

The screenshot shows the Illinois Tollway website's Diversity Webinar Series page. At the top, there is a navigation bar with the Illinois Tollway logo, 'I-PASS | PAY-BY-PLATE', and a search icon. Below the navigation bar, the page title is 'Webinar Series'. The main content area features a paragraph describing the webinar series, followed by a section titled 'Illinois Department Of Transportation Disadvantaged Business Enterprise Program Certification'. This section includes the presenter's name, Lincoln Blackwell, and a brief description of the webinar. On the right side of the page, there is a logo for 'BUILDING FOR SUCCESS Webinar Series' and a date/time stamp: 'MONDAY, MARCH 1, 2021 3-3:30 P.M.'. A prominent blue button labeled 'Register Now' is highlighted with a red border.

<https://www.illinoistollway.com/diversitywebinarseries>

# BUILDING FOR SUCCESS WEBINAR SERIES

## SUCCESS TO DATE

- **Nearly 2,000 attendees in 2020**
- **Most popular topics**
  - Statement of Interest
  - IDOT and CDB pre-qualification

## 2021 TOPICS

- **Doing Business with the Tollway**
  - Goods and Services
  - Construction
- **Getting DBE Certified / Prequalification Assistance**



# ROLLING OWNER-CONTROLLED INSURANCE PROGRAM



# ROLLING OWNER-CONTROLLED INSURANCE PROGRAM OVERVIEW

## Removing barriers to prime contracting opportunities for small businesses



The ROCIP provides General Liability insurance coverage on small business contracts, removing a barrier for participation on prime opportunities.



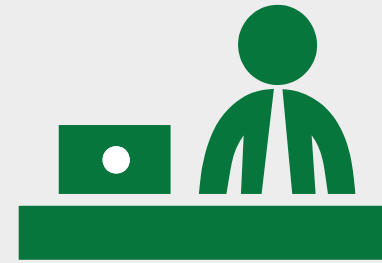
This allows the Tollway to level the playing field for small and diverse businesses and allows more contractors to pursue prime opportunities.

# ROLLING OWNER-CONTROLLED INSURANCE PROGRAM OVERVIEW

## Removing barriers to prime contracting opportunities for small businesses



Through the program, eligible enrolled contractors and subcontractors are provided liability coverage.



ROCIP aligns with current small business programs while being flexible enough to be used for emerging and future programs.

# TYPES OF COVERAGE

## *Types of Insurance Included in Program*

### **Commercial General Liability (CGL)**

- ✓ \$2 million per occurrence, \$4 million aggregate

### **Excess Liability**

- ✓ Up to \$25 million per occurrence, \$25 million aggregate

### **For On-Site**

- ✓ \$2 million per occurrence, \$4 million aggregate CGL and Excess Liability
- ✓ Contractors will still be required to maintain coverages for auto liability, workers comp, and contractors pollution liability for on-site and off-site exposures, and CGL and excess liability for off-site exposures





# TYPES OF COVERAGE

## *Features*

### Coverage

- Coverage for all enrolled contractors, subcontractors with **onsite exposure**

### Limits

- Limits are on a per-project basis

### Deductible

- Deductible for claims will be based on contract value and will be the responsibility of the contractor/subcontractor



# WHAT TO EXPECT

## *ROCIP Administration*



ROCIP manual will be provided as a part of the bid documents



Winning bidder will contact the ROCIP Administrator to enroll in program



ROCIP administrator will help winning bidder enroll into the program



Prime is responsible for making sure all subs on contract that have onsite exposure enroll

**MOVE  
ILLINOIS**

**Q&A**



NO RESTROOMS AHEAD  
END INTERCHANGE  
WEST RESTROOMS AHEAD  
BARDOLPH 2.8 MILES

**MOVE  
ILLINOIS**

**THANK YOU**

