



ILLINOIS TOLLWAY NEWS

FOR IMMEDIATE RELEASE
June 24, 2021

TEMPORARY RAMP CLOSURE SCHEDULED FOR BRIDGE BEAM PLACEMENT AS PART OF TRI-STATE TOLLWAY (I-294)/I-57 INTERCHANGE PROJECT

Temporary closures on I-57 planned for the week of July 5 for traffic shift

DOWNERS GROVE, IL – Overnight lane closures are scheduled next week on the Tri-State Tollway (I-294)/I-57 Interchange Project, including three nights of intermittent, full closures on the ramp connecting southbound I-294 to southbound I-57 to accommodate bridge beam placement, and additional closures will be scheduled the week of July 5 for traffic shifts on northbound I-57.

Electronic message signs and construction signage will be put in place in advance to alert drivers to changes in traffic patterns and ramp closures. Up-to-date information regarding closures will be available in the Illinois Tollway's [Daily Construction Alert](#). All work is weather dependent.

“The Illinois Tollway is committed to ensuring the roadway remains safe for both drivers and workers during construction, which is part of our overall commitment to roadway safety,” said Illinois Tollway Executive Director José Alvarez. “We ask drivers to be attentive in work zones by watching for changing traffic patterns and using caution, especially when workers are present.”

During the week of June 28, up to three nights of intermittent, full closures will be needed on the ramp carrying southbound I-294 to southbound I-57 for bridge girders placement over the ramp. Beginning Tuesday, June 29, intermittent, full closures of the ramp, each lasting 15 minutes, will begin at midnight. All lanes on the ramp are scheduled to reopen by 7 a.m. the following morning. Similar closures are scheduled overnight Wednesday, June 30 and Thursday, July 1.

Then beginning July 7, lane closures on northbound I-57 are scheduled to begin at 8 p.m. in order to shift traffic to the right. Up to two lanes will be closed at a time overnight. All lanes on I-57 are scheduled to reopen by 5 a.m. the following morning. Similar closures are scheduled through the week to complete the work.

Southbound I-57 traffic is scheduled to shift in August.

Once traffic is shifted, three lanes of traffic will be maintained during construction, except for temporary overnight closures, as needed.

Once the traffic shifts are complete, work to complete the widening of the I-57 bridges over Dixie Highway and 149th Street will begin. In addition, work will begin to reconstruct the bridge over 147th Street. Off-peak lane closures will be scheduled as needed on Dixie Highway, 147th Street and 149th Street to complete this work.

In 2021, work on I-294/I-57 Interchange Project includes completion of roadway widening on I-57, widening of the I-57 bridge over Dixie Highway, replacing the 147th Street Bridge, as well as continued construction of the ramp connecting northbound I-294 to northbound I-57 and the two ramps carrying southbound I-57 to I-294, including a flyover ramp bridge. Work to widen the CSX Railroad Bridge on I-57 is also scheduled to begin this year.

-more-

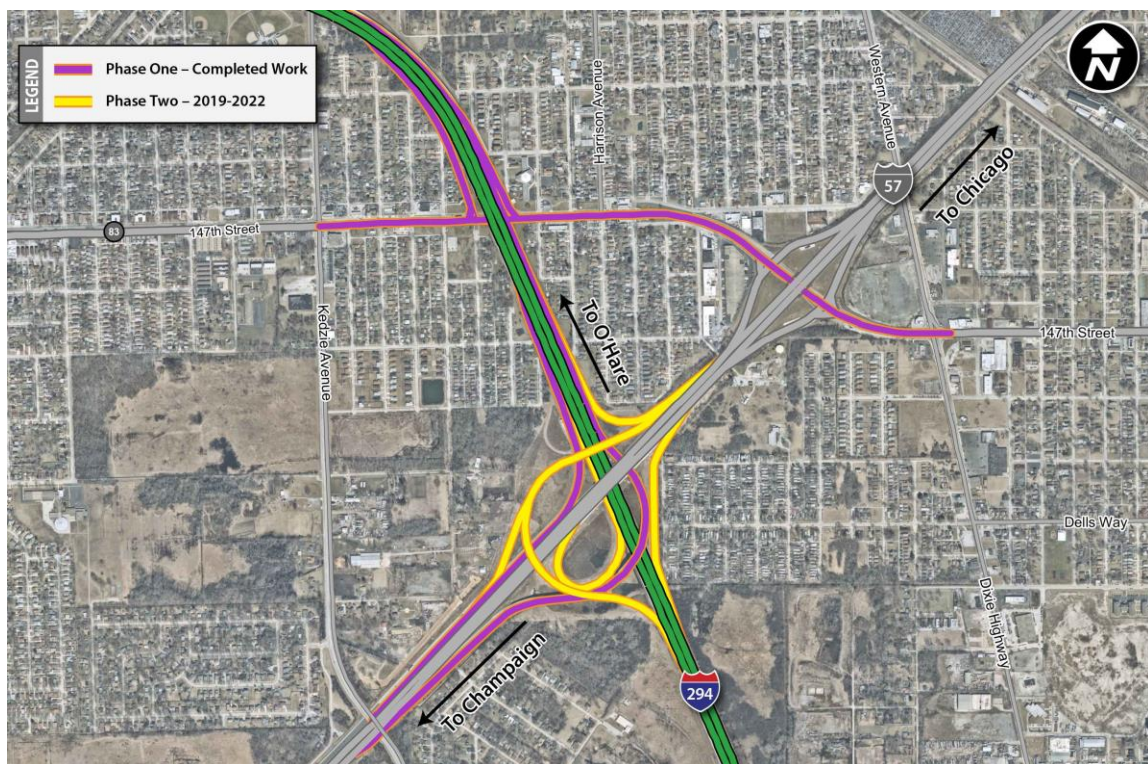
This work is part of the second phase of the I-294/I-57 Interchange Project, which is building four new ramps to connect southbound I-57 to I-294 and I-294 to northbound I-57, including the flyover ramp bridge. The flyover ramp bridge will carry traffic from southbound I-57 to southbound I-294 and from 147th to southbound I-57. The multi-span structure will be 2,649 feet long with a bridge deck approximately 16 feet above I-294 and 17 feet above I-57. Interchange construction is scheduled to continue into 2022.

Additional work on this project includes the reconstruction of the I-57 median and the widening of the I-57 mainline, as well as drainage improvements, erosion and sediment control, retaining wall and bridge construction.

Maps and construction information about the Tri-State Tollway (I-294)/I-57 Interchange Project is available in the Project's section on the Tollway's website at www.illinoistollway.com.

The \$719 million I-294/I-57 Interchange Project is funded by the Illinois Department of Transportation and the Illinois Tollway's 15-year, \$14 billion capital program, Move Illinois: The Illinois Tollway Driving the Future.

The new interchange is improving travel by providing customers with completed access between the two interstates. For the first time, the new I-294/I-57 Interchange provides motorists with access between I-294 and I-57, including a new interchange at 147th Street. The complete interchange will reduce congestion on local routes, enhance economic development and improve regional mobility. The all-electronic interstate-to-interstate connection better serves commuters and freight operators while opening access for local communities.



Work Zone Safety

Construction zone speed limits are in effect in all construction zones 24/7 and drivers should continue to watch for changing traffic patterns and use caution, especially when workers are present.

On I-294, a 55 mph work zone speed limit is in effect throughout the construction season. On I-57, work zone speed limits will also be in effect throughout the construction season.

The Illinois Tollway reminds motorists that the “Move Over Law” requires motorists to change lanes or to slow down and proceed with caution when passing any vehicle on the side of the road with hazard lights activated. If you see flashing lights ahead, please move over or slow down.

Illinois State Police have zero tolerance for drivers speeding in work zones or failure to comply with the Move Over Law. The minimum penalty for speeding in a work zone is \$250 with up to a \$25,000 fine and a 14-year jail sentence for hitting a roadway worker. Penalties for failure to slow down or move over for a vehicle on the shoulder with flashing lights includes up to a \$10,000 fine, 2-year suspension of driving privileges and jail time, in extreme cases.

About *Move Illinois*

The Illinois Tollway’s 15-year, \$14 billion capital program, *Move Illinois: The Illinois Tollway Driving the Future*, is improving mobility, relieving congestion, reducing pollution, creating as many as 120,000 jobs and linking economies throughout the region. The first nine years of *Move Illinois* is on schedule and within budget, delivering the rebuilt and widened Jane Addams Memorial Tollway (I-90) as a state-of-the-art 21st century corridor and opening a new interchange connecting the Tri-State Tollway (I-294) to I-57. Progress continues on projects addressing the remaining needs of the existing Tollway system, delivering the Elgin O’Hare Western Access Project and reconstruction of the Central Tri-State Tollway (I-294).

About the Illinois Tollway

The Illinois Tollway is a user-fee system that receives no state or federal funds for maintenance and operations. The agency maintains and operates 294 miles of roadways in 12 counties in Northern Illinois, including the Reagan Memorial Tollway (I-88), the Veterans Memorial Tollway (I-355), the Jane Addams Memorial Tollway (I-90), the Tri-State Tollway (I-94/I-294/I-80) and the Illinois Route 390 Tollway.

#