



ILLINOIS TOLLWAY NEWS

FOR IMMEDIATE RELEASE

June 22, 2021

OVERNIGHT CLOSURES SCHEDULED ON NORTH TRI-STATE TOLLWAY (I-94) AT STEARNS SCHOOL ROAD FOR BRIDGE RECONSTRUCTION PROJECT

Temporary lane closures needed to safely accommodate bridge beam placement

DOWNERS GROVE, IL – Temporary, overnight lane closures are scheduled to begin this weekend on the Tri-State Tollway (I-94) at Stearns School Road in Gurnee for bridge beam placement as part of ongoing local crossroad bridge reconstruction.

Altogether, up to five nights of intermittent, full closures will be needed on the Tollway. The Stearns School Road Bridge over I-94 is currently closed to traffic with a posted detour.

“This work is necessary to keep the Tollway in good condition for years to come,” said Illinois Tollway Executive Director José Alvarez. “We work to limit lane closures to temporary overnight hours to minimize the impact of construction on daily commuters.”

Electronic message signs will be in place in advance to alert Tollway drivers to the overnight lane closures. The temporary closures are necessary to safely accommodate the placement of bridge beams over I-94. Bridge beam placement will be scheduled during overnight hours to minimize the impact on traffic. Up-to-date closure information will be available on the Illinois Tollway’s [Daily Construction Alert](#). All work is weather dependent.

Beginning Sunday, June 27, on I-94 one eastbound lane is scheduled to close at 8 p.m. each night, with a second lane closing at 9 p.m. and a third lane closing at 11 p.m. Intermittent, full closures of I-94, each lasting 15 minutes, will begin at 11:30 p.m. All lanes on I-94 are scheduled to reopen by 5 a.m. the following morning. A second night of overnight closures is scheduled Monday, June 28, into Tuesday, June 29.

Similar closures are also scheduled in both directions overnight Tuesday, June 29, into Wednesday, June 30, and in the westbound direction only overnight Wednesday, June 30, into Thursday, July 1. A third night of westbound closures will be scheduled overnight Thursday, July 1, into Friday, July 2, if needed.

The Illinois Tollway, Village of Gurnee and Lake County Division of Transportation are working in coordination to replace the 70-year-old Stearns School Road Bridge over the Tri-State Tollway (I-94). The new bridge structure will be designed to provide for three lanes of traffic, as well as additional bicycle and pedestrian access. Up to 15,900 vehicles travel on this section of Stearns School Road daily.

As part of the Stearns School Road Bridge Project, the existing two-lane bridge carrying traffic over the Tollway will be removed and replaced with a new, wider bridge structure. This Tollway-led project is planned to construct a new bridge that will carry three lanes of traffic on Stearns School Road over the North Tri-State Tollway (I-94) along with 4-foot-wide shoulders, replacement of the existing pedestrian path on the north side and the addition of a new sidewalk on the south side. In addition, since the

-more-

Illinois Tollway typically constructs new bridges with a 75-year service life, the new bridge will be designed to accommodate future local roadway improvements

Work on this project is being coordinated with the Illinois Department of Transportation, the Village of Gurnee, Warren Township and Lake County, as well as local fire and police departments.

These repairs are necessary to extend the life of the local crossroad bridge and provide safe and convenient travel for Tollway customers. This \$12 million project is part of the Tollway's 15-year, \$14 billion capital program, *Move Illinois: The Illinois Tollway Driving the Future*, and includes \$5.4 million in local cost participation for the improvements.

Maps and construction about the Stearns School Road Project are available in the Projects section on the Tollway's website at www.illinoistollway.com.

Work Zone Safety

Construction zone speed limits are in effect in all construction zones 24/7 and drivers should continue to watch for changing traffic patterns and use caution, especially when workers are present.

The Illinois Tollway reminds motorists that the "Move Over Law" requires motorists to change lanes or to slow down and proceed with caution when passing any vehicle on the side of the road with hazard lights activated. If you see flashing lights ahead, please move over or slow down.

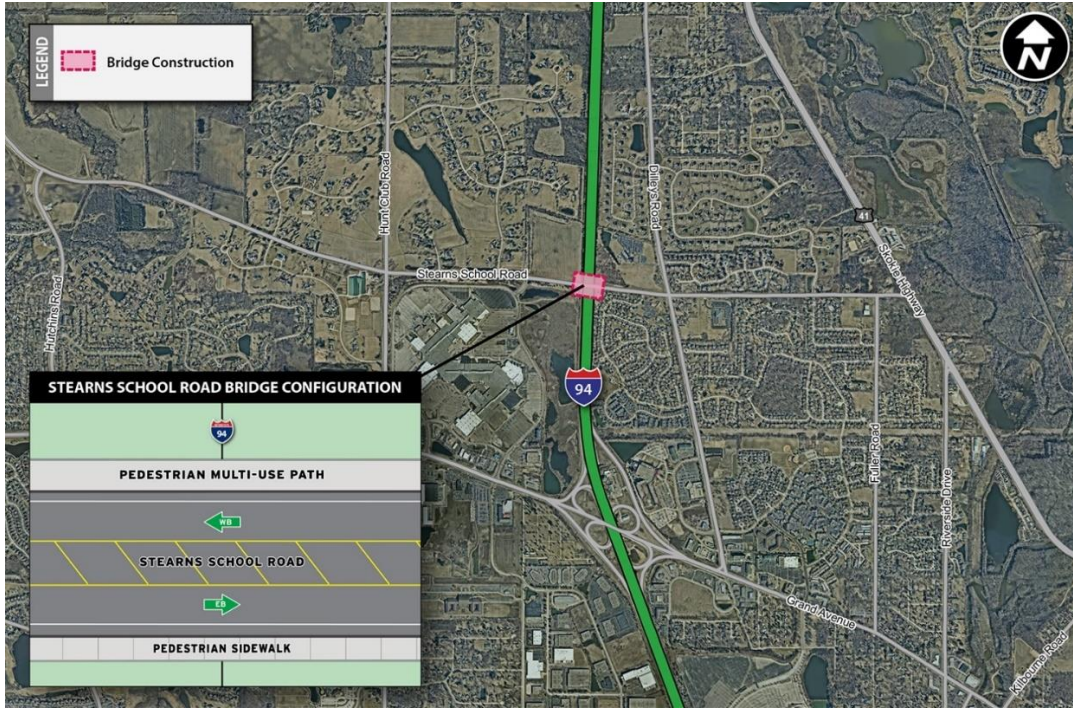
Illinois State Police have zero tolerance for drivers speeding in work zones or failure to comply with the Move Over Law. The minimum penalty for speeding in a work zone is \$250 and can include up to a \$25,000 fine and a 14-year jail sentence for hitting a roadway worker. Penalties for failure to slow down or move over for a vehicle on the shoulder with flashing lights includes up to a \$10,000 fine, 2-year suspension of driving privileges and jail time, in extreme cases.

About Move Illinois

The Illinois Tollway's 15-year, \$14 billion capital program, *Move Illinois: The Illinois Tollway Driving the Future*, is improving mobility, relieving congestion, reducing pollution, creating as many as 120,000 jobs and linking economies throughout the region. The first nine years of *Move Illinois* is on schedule and within budget, delivering the rebuilt and widened Jane Addams Memorial Tollway (I-90) as a state-of-the-art 21st century corridor and opening a new interchange connecting the Tri-State Tollway (I-294) to I-57. Progress continues on projects addressing the remaining needs of the existing Tollway system, delivering the Elgin O'Hare Western Access Project and reconstruction of the Central Tri-State Tollway (I-294).

About the Illinois Tollway

The Illinois Tollway is a user-fee system that receives no state or federal funds for maintenance and operations. The agency maintains and operates 294 miles of roadways in 12 counties in Northern Illinois, including the Reagan Memorial Tollway (I-88), the Veterans Memorial Tollway (I-355), the Jane Addams Memorial Tollway (I-90), the Tri-State Tollway (I-94/I-294/I-80) and the Illinois Route 390 Tollway.



###