



Elgin O'Hare Western Access Project

Local Advisory Committee

EOWA Project Team
July 10, 2017

Today's Agenda

Feedback on local issues

Project status updates

**City of Wood Dale economic
development efforts**

Updates from Cook and DuPage counties

**Pace Illinois Route 390 Tollway Corridor
Service Study update**

Next steps

Feedback On Local Issues

What are you hearing?

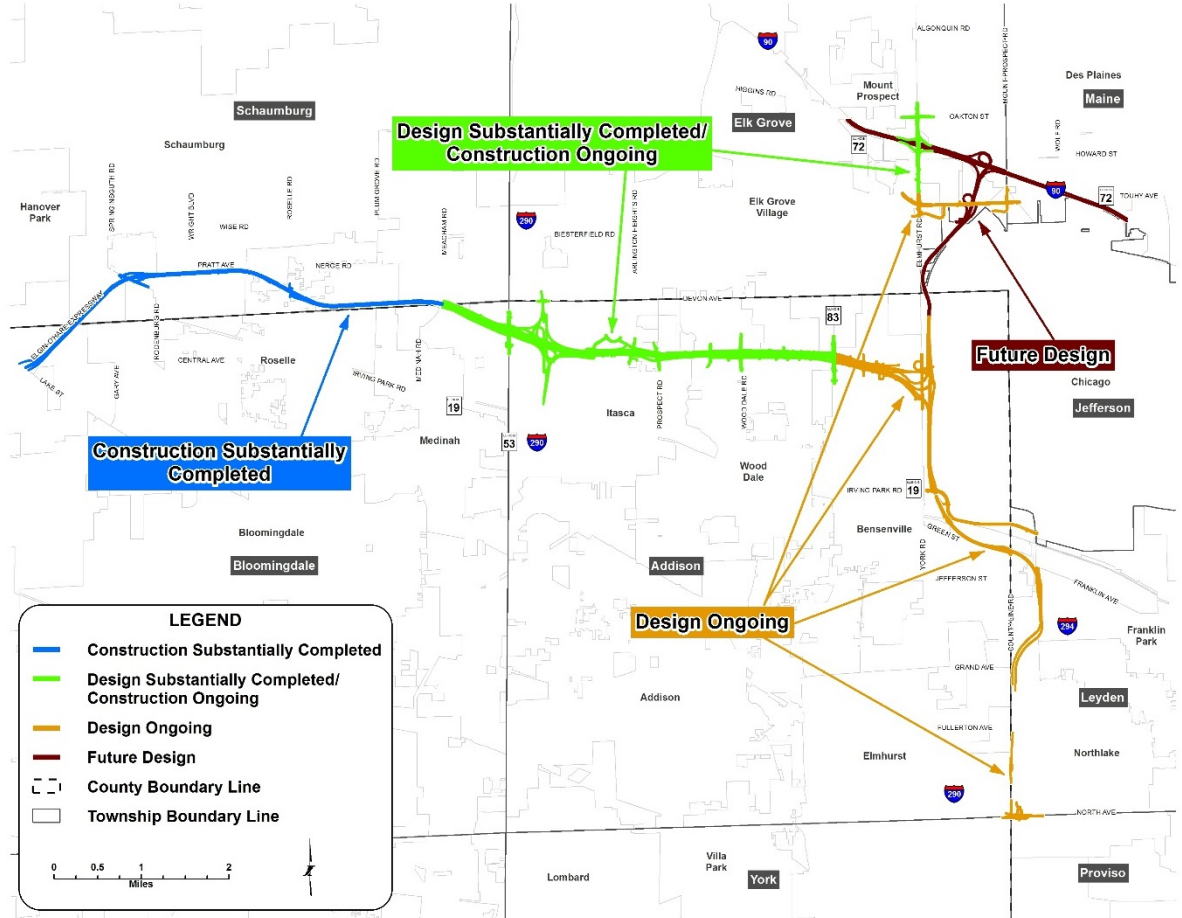
- Construction operations and traffic flow
- Frontage roads
- Tolling
- Land acquisition
- Design features
- Western access
- Development opportunities and trends
- Other



The Illinois Tollway
DRIVING
THE FUTURE

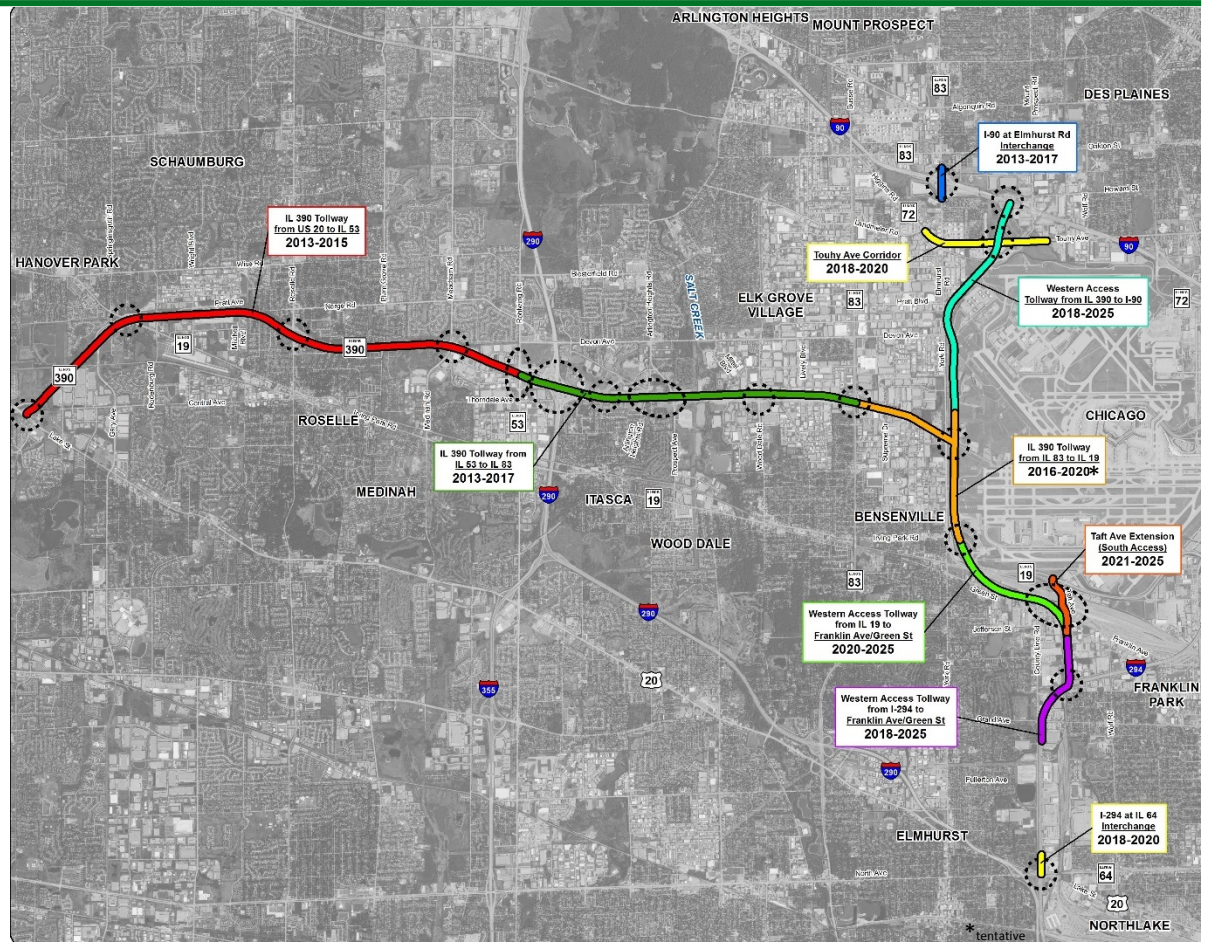
Project Status Update

Project Design And Construction Status



The Illinois Tollway
DRIVING THE FUTURE

Project Construction Timeline



New Diverging Diamond Interchange

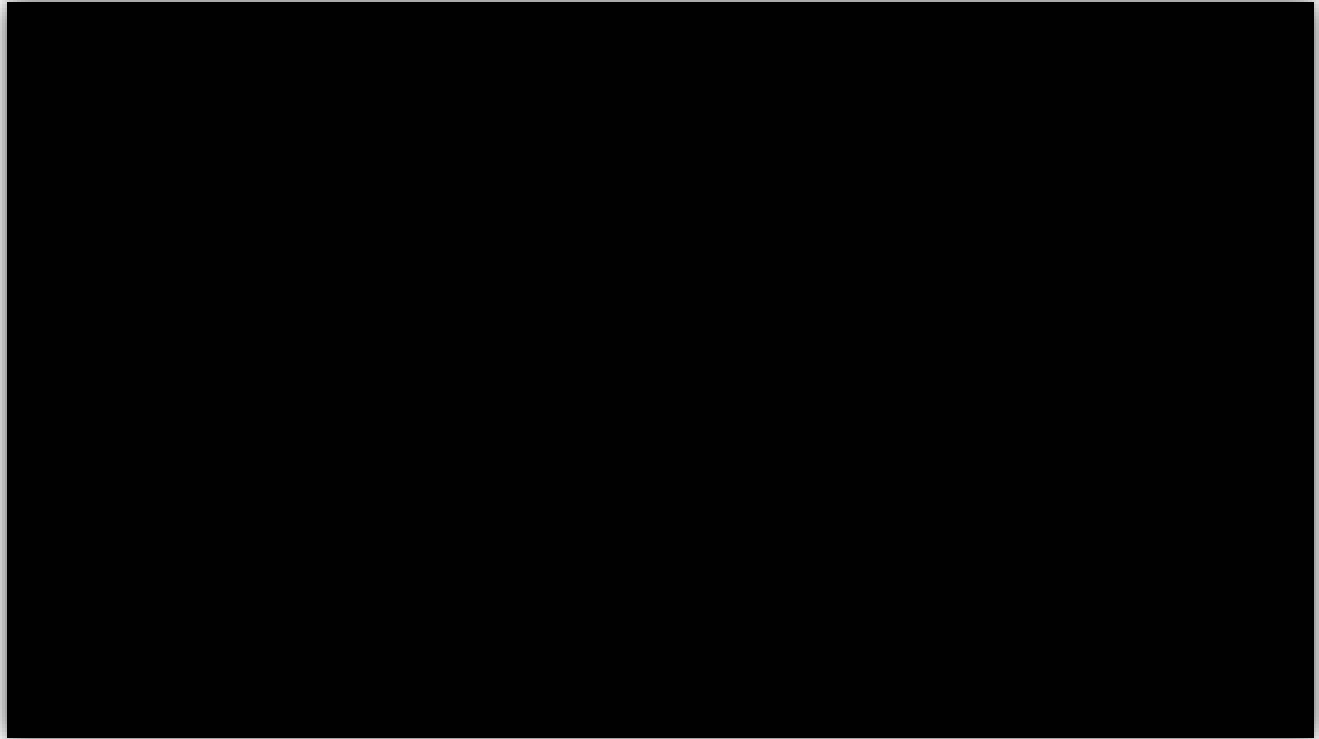
Elmhurst Road Interchange at
the Jane Addams Memorial
Tollway (I-90)

Now open!!!!



The Illinois Tollway
**DRIVING
THE FUTURE**

New Diverging Diamond Interchange at Elmhurst Road on I-90



The Illinois Tollway
**DRIVING
THE FUTURE**

Public Outreach

Since last LAC meeting

- Des Plaines Chamber of Commerce & Industry Mid-year Business Summit Breakfast
- Local coordination – nine meetings

Upcoming events

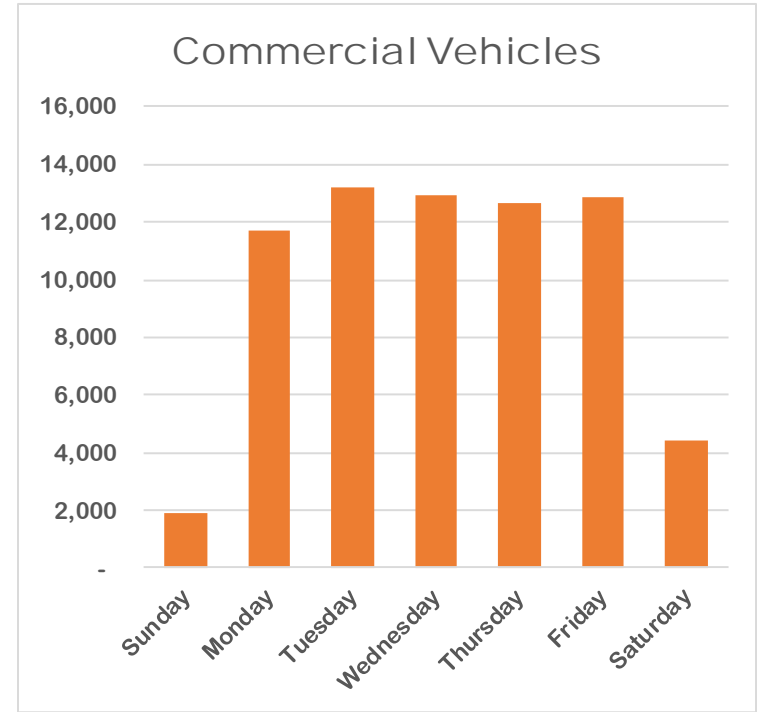
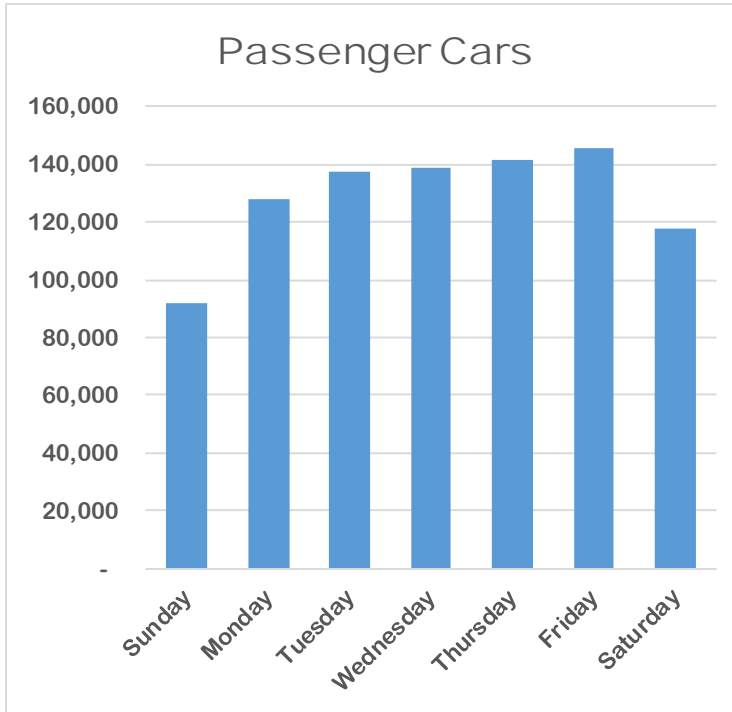
- LAC meeting – September 11
- Illinois Route 390 Tollway Grand Opening Event – October 28
- Invite us to your event



The Illinois Tollway
**DRIVING
THE FUTURE**

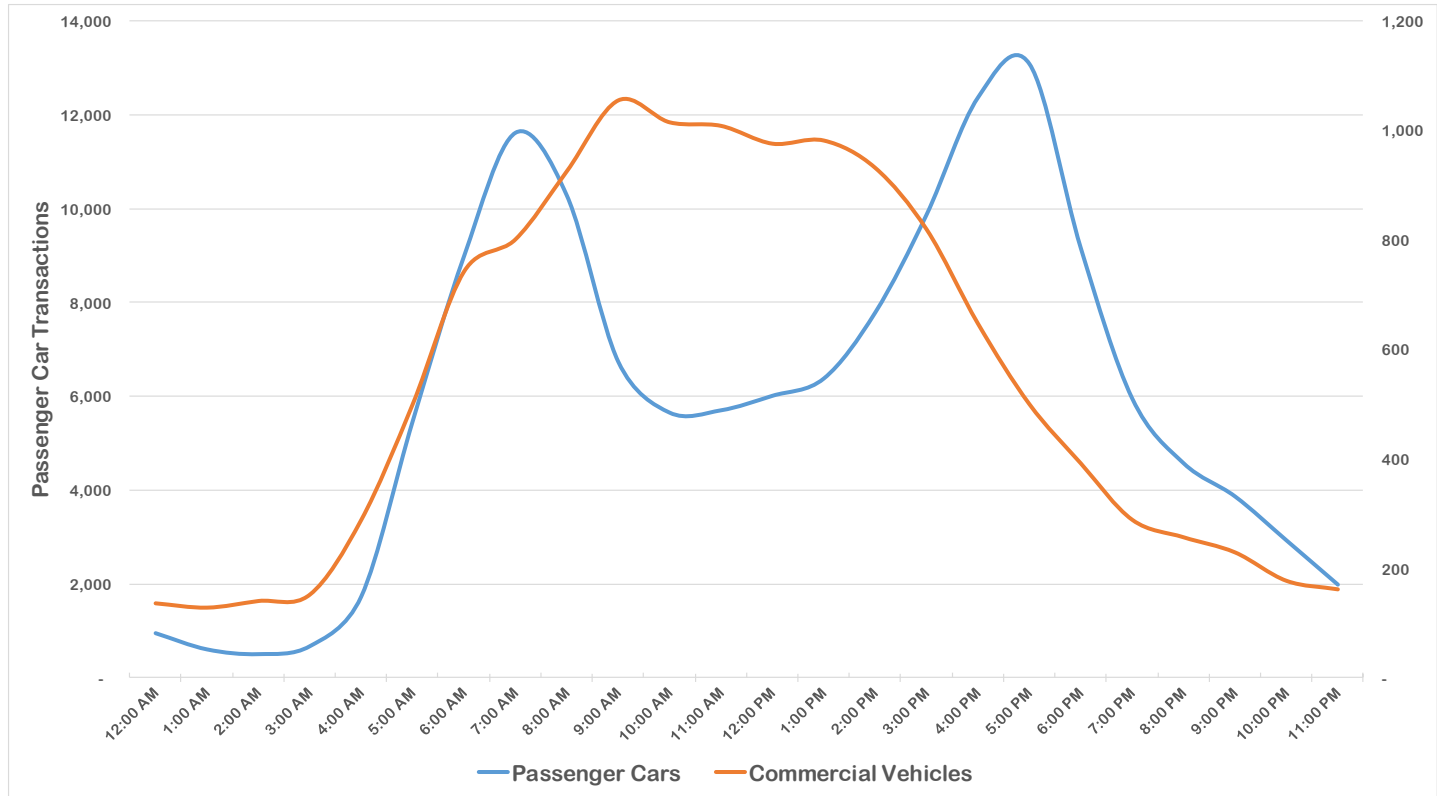
Illinois Route 390 Year In Review

Average Transactions Per Day, July 2016 – May 2017



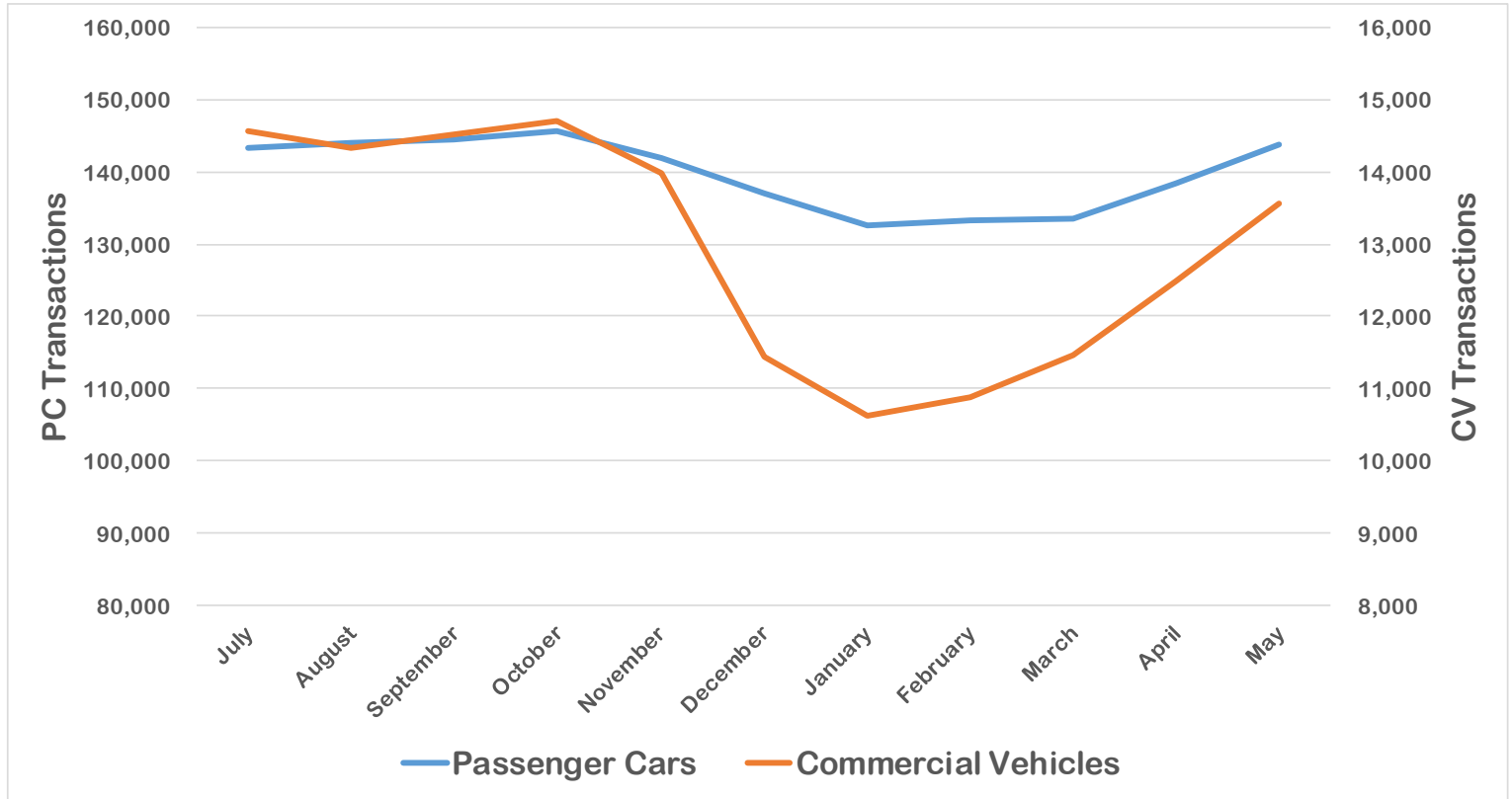
The Illinois Tollway
**DRIVING
THE FUTURE**

Average Weekday Transactions By Hour



DRIVING THE FUTURE

Average Weekday Transactions Per Month



Before And After Tolling – Change In Travel Times

Route	From	To	Before Tolling Average Travel Time (minutes)		After Tolling Average Travel Time (minutes)		Change Travel Time (seconds)	
			EB	WB	EB	WB	EB	WB
IL 390	US 20	I-290	5.9	6.3	5.9	5.9	-2.0	-27.1
Wise Rd. and IL 19	Barrington Rd.	I-290	12.4	12.8	12.8	14.0	19.7	69.8
IL 19 / Irving Park	Barrington Rd.	I-290	13.3	15.6	13.6	15.8	17.8	12.7
US 20 / Lake St.	Barrington Rd.	I-290	10.6	13.0	11.4	13.2	44.9	15.3

EB a.m. peak period: 6 a.m. to 9 a.m.

WB p.m. peak period: 4 p.m. to 7 p.m.



The Illinois Tollway
**DRIVING
THE FUTURE**

Operational Improvements And Impacts

Illinois Route 390/I-290 Interchange

- Removal of traffic signals at the Illinois Route 390/I-290 interchange has reduced congestion
- Total delay in the afternoon peak period due to two traffic signals was approximately 2 minutes per vehicle

I-290 to Illinois Route 83 - Opening 2017

- Travel time saving to take the entire limited-access route over a hybrid route of the western section of Illinois Route 390 and Thorndale Avenue
- Completion of higher-capacity, limited-access route will attract traffic from local roads



The Illinois Tollway
DRIVING
THE FUTURE

City Of Wood Dale's Economic Development Efforts



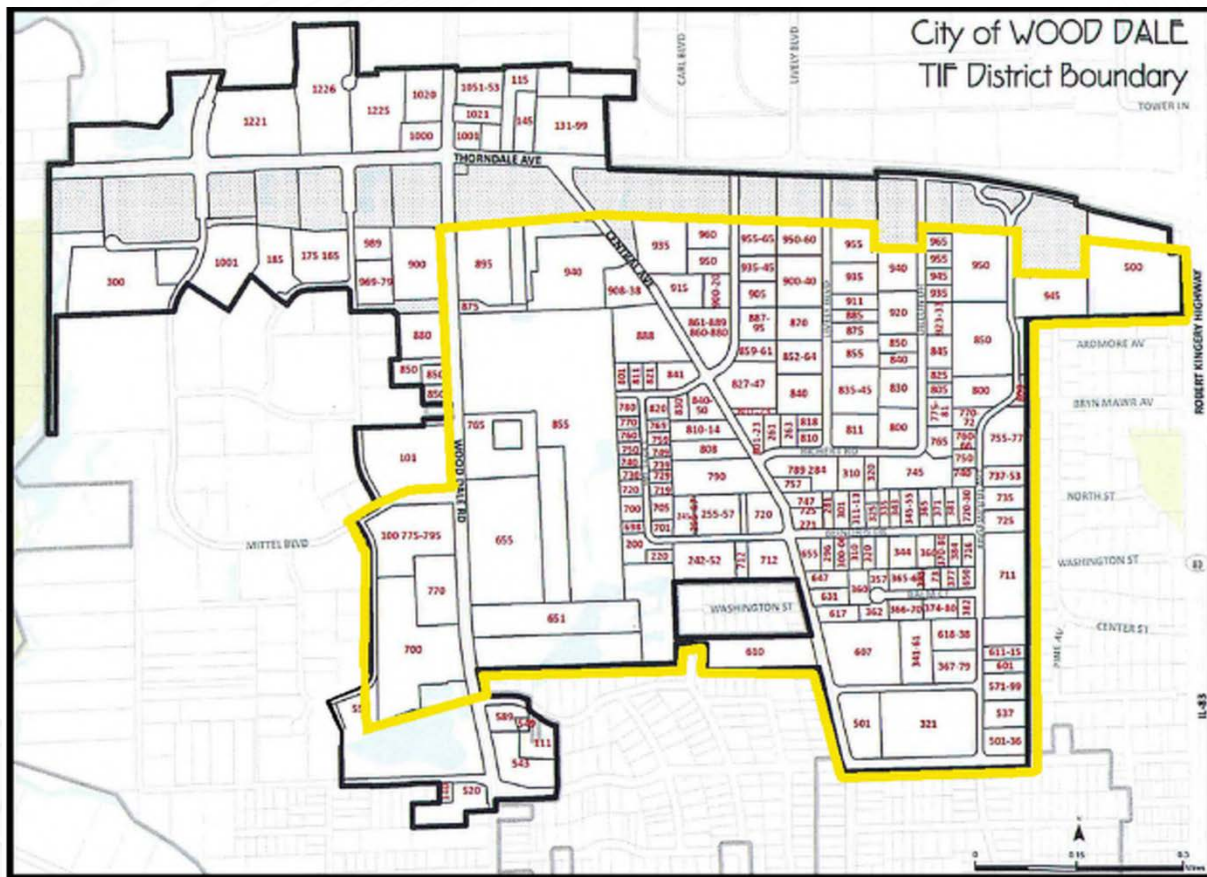
WOOD DALE
Illinois

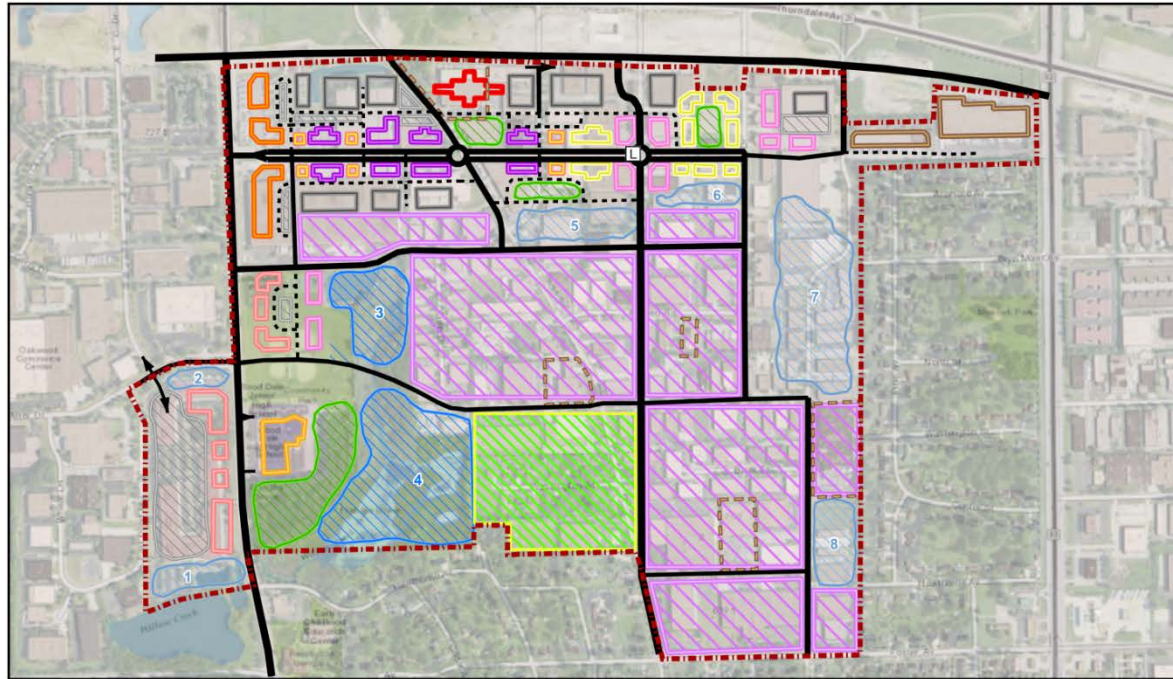
CITY OF WOOD DALE THORNDALE CORRIDOR MASTER PLAN



CITY OF WOOD DALE THORNDALE CORRIDOR MASTER PLAN

- Plan was prepared in 2009
- Three future projects were key factors behind the preparation of this plan
 - Elgin O'Hare Tollway
 - O'Hare Airport Western Access
 - Mass Transit along EOWA Corridor
- Corporate Main Street Vision
 - Walkable, mixed-use thoroughfare, as anchor for:
 - 1.9 million sq. ft. of 5-6 story office towers
 - 107,000 sq. ft. restaurant/retail space
 - 1.9 million sq. ft. of modern light industrial space
 - 2,400 hotel rooms
 - 415 multi-family housing units
 - 120K square foot recreation center, and
 - Direct transit access to Chicago.





TIF Master Plan Concept (Base)

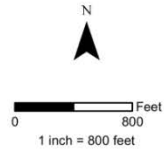
City of Wood Dale
DuPage County, Illinois

Legend

Buildings

- Commercial
- Existing
- Existing School
- Four Story Mixed Use Residential (Over Retail)
- Hotel
- Multi-Story Res
- Office
- Parking Garage
- Restaurant
- TOD
- Other
- High Value Properties

- Light Industrial Zone
- Recreation Complex
- Existing Wetlands
- Proposed Detention
- Open Space / Park / Plaza
- Parking
- Existing Lift Station
- Roads
- Access Roads
- Truck Access
- Project Limits





CITY OF WOOD DALE TIF DISTRICT REDEVELOPMENT

- TIF District
 - 603 acres
 - 250 tax parcels
 - TIF study performed in 2014
 - TIF District implemented in 2016
 - Positive tax increment in six figures was realized in the first year of establishment
 - City established a line of credit to allow advance funding of additional studies and/or initial improvements
 - Additional infrastructure studies currently ongoing include regional stormwater management plan, wetlands delineation and City water system model update



ILLINOIS ROUTE 390 IMPROVEMENTS THAT BENEFIT THE CITY OF WOOD DALE TIF DISTRICT

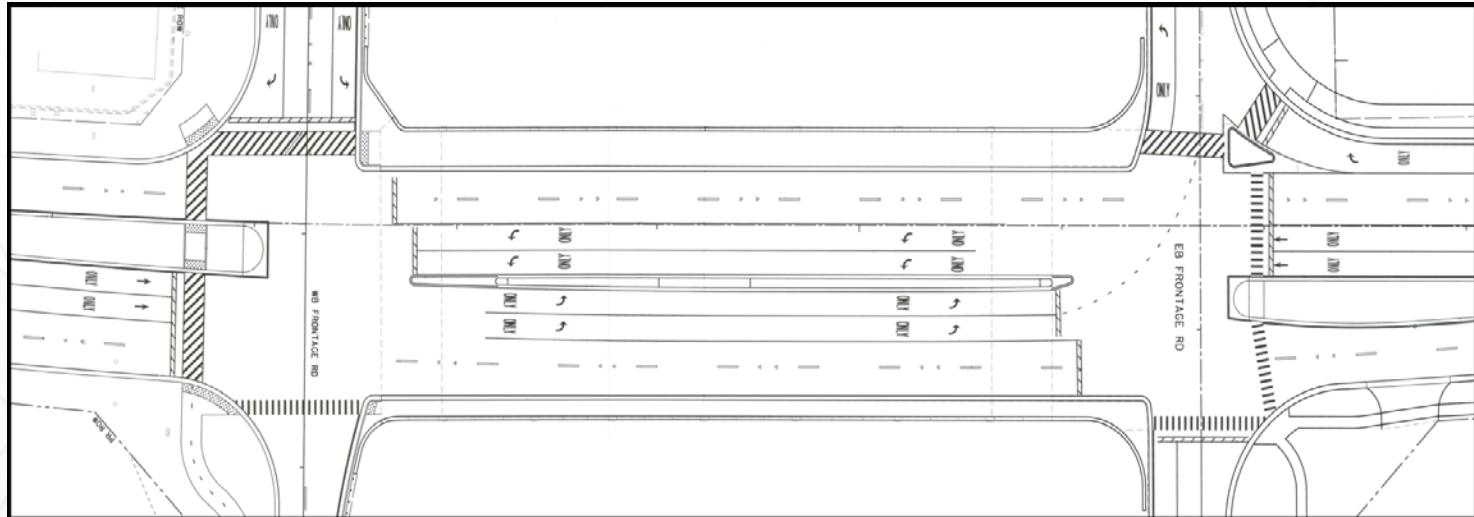
- Traffic Improvements
 - Wood Dale Road and Wood Dale Road Bridge
- Utility Improvements
 - City water system and sanitary sewer system relocation
 - Wired utilities relocations
- Aesthetic Improvements
- Bikepath Improvements



WOOD DALE ROAD GEOMETRIC IMPROVEMENTS

The 2030 traffic improvements would have included single left turn lane in both northbound and southbound directions.

The 2040 improvements which were ultimately constructed, following extensive coordination with DuPage County and City of Wood Dale regarding interchange proximity to future TIF District, included dual left turn lanes in both northbound and southbound directions.



SANITARY SEWER AND WATER SYSTEM RELOCATIONS

Sanitary Sewer

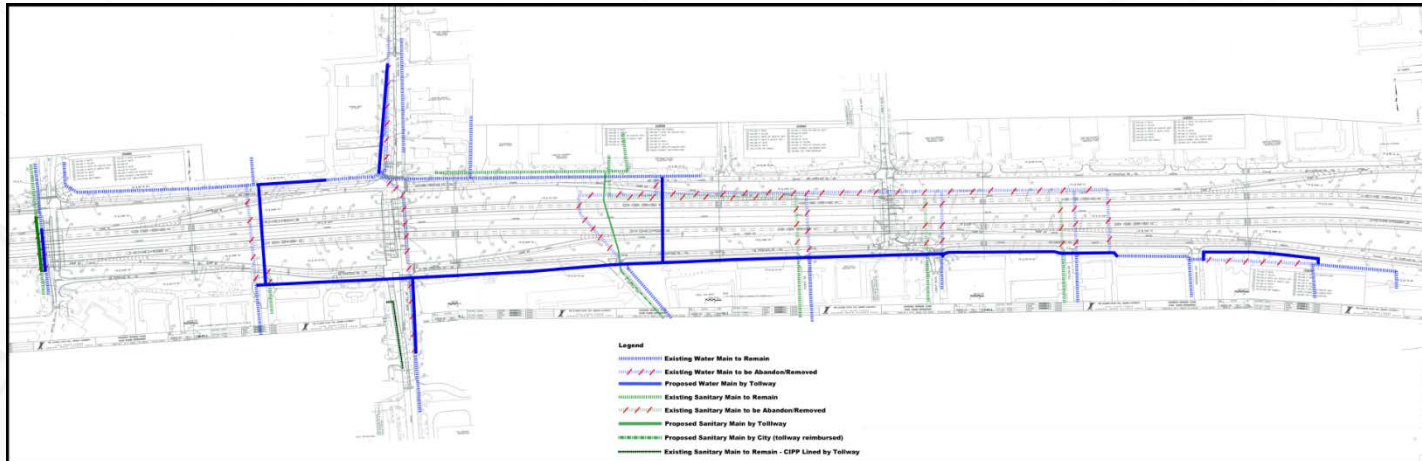
The relocation plans onsite and offsite consolidated the sanitary sewer system along one major roadway / utility corridor. (Central Avenue)

Water system

The relocation plans consolidated a potential for eight watermain crossings of the Illinois Route 390 corridor into three locations, providing equal or greater system capacity.

The relocation placed the new water system adjacent to the future TIF redevelopment area.

The result was construction cost savings to Tollway and reduction in future maintenance expenses for City.



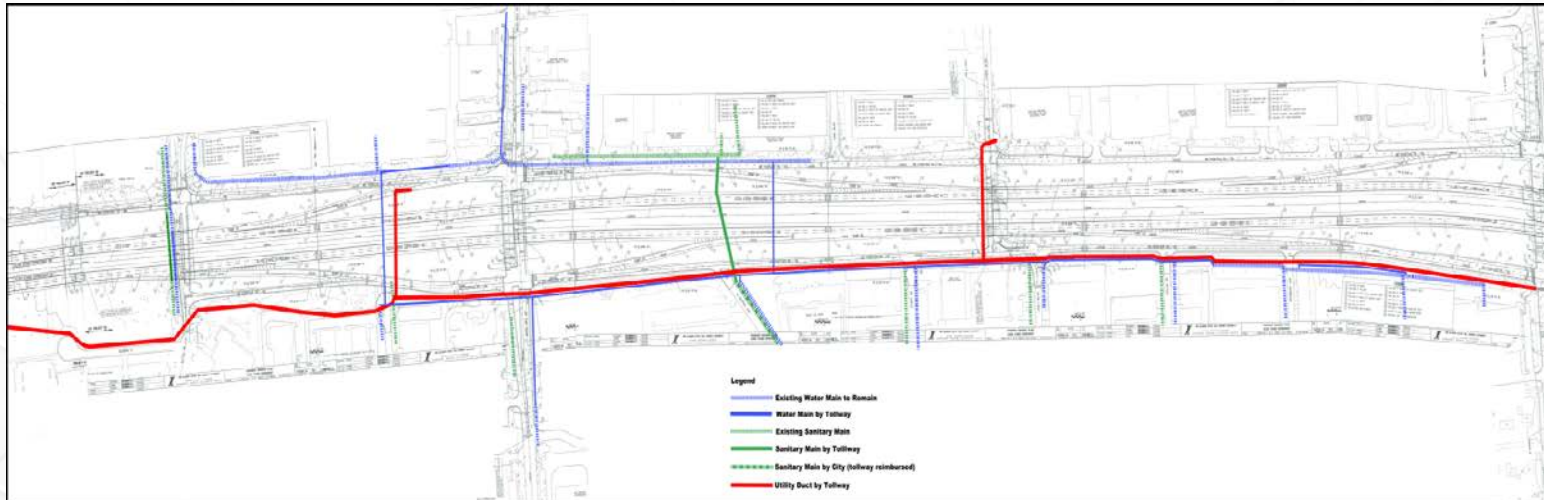


WIRED UTILITIES RELOCATIONS

The Tollway and various utility companies coordinated a multi-party joint duct package relocation process.

The joint relocation significantly reduced underground congestion and provided adequate clearance for other utilities, including City 12 inch watermain.

The joint duct location and proximity of these utilities to future TIF redevelopment area is expected to yield future benefits.





WOOD DALE Illinois

PRODUCT SPECIFICATIONS

THE PRISM® SERIES *Modern Lighting Fixtures*

DETAILS: The Prism Series is a collection of modern lighting fixtures designed to complement the Wood Dale Bridge Enhancements. The fixtures are available in a variety of finishes and colors to match the bridge's aesthetic.

HEAD FITTER: The Prism Series features a head fitter that allows for easy installation and adjustment of the lighting fixture. The head fitter is designed to fit onto a standard light pole and can be adjusted to accommodate different fixture heights and orientations.

INSTALLATION: The Prism Series lighting fixtures are designed to be installed on a standard light pole. The head fitter is attached to the top of the pole, and the fixture is then mounted to the head fitter. The head fitter is designed to be easily adjusted to accommodate different fixture heights and orientations.

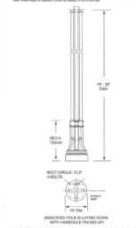
FINISHES: The Prism Series lighting fixtures are available in a variety of finishes, including black, white, and bronze. The fixtures are also available in a variety of colors, including white, black, and bronze.

APPLICATIONS: The Prism Series lighting fixtures are ideal for use on bridges, walkways, and other outdoor spaces. The fixtures are designed to be durable and weather-resistant, making them suitable for use in a variety of environments.



TRADITIONAL MULTI-POST POLE

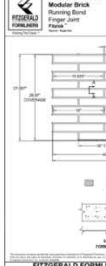
Model	Height	Width	Weight
MP-1	10'	4"	150 lbs
MP-2	12'	4"	200 lbs
MP-3	14'	4"	250 lbs
MP-4	16'	4"	300 lbs
MP-5	18'	4"	350 lbs
MP-6	20'	4"	400 lbs



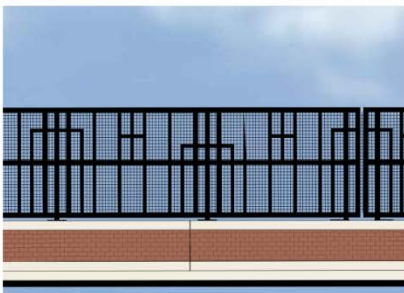
TAP



PATTERN 1991/1P



Pattern 1991/1P
Model: 1991/1P
Height: 10'-0" (3.05m)
Width: 4'-0" (1.22m)
Weight: 150 lbs (68kg)
Material: Steel
Finish: Black
Notes: This pattern is used for the formliner and is available in a variety of finishes and colors. It is designed to be durable and weather-resistant, making it suitable for use in a variety of environments.



WOOD DALE STANDARD LIGHT FIXTURE

ENHANCEMENT LIGHT POLE AND BASE TO BE USED WITH WOOD DALE STANDARD LIGHT FIXTURE

PROPOSED ENHANCEMENT FORMLINER PATTERN

CONCRETE COLOR STAIN CHART

DECORATIVE RAILING
SCALE: 1/2"=1'-0"



BRIDGE INTERIOR ELEVATION
SCALE: 1/8"=1'-0"



BRIDGE EXTERIOR ELEVATION
SCALE: 1/8"=1'-0"

WOOD DALE ROAD BRIDGE ENHANCEMENTS

WOOD DALE, ILLINOIS

1/28/15

GRWA
GARY R. WEBER ASSOCIATES, INC.
 22 INDEPENDENT STREET
 WOOD DALE, ILLINOIS 60097
 TEL: 815.486.1100
 WWW.GRWAA.COM



WOOD DALE ROAD BRIDGE AESTHETIC IMPROVEMENTS

Entryway to future redevelopment area

- Decorative roadway lighting on bridge and also along Wood Dale Road
- Decorative concrete parapets and columns
- Decorative railing / fencing
- 5' sidewalk along west side and 10' path along east side to promote future pedestrian connections along Illinois Route 390 and to Salt Creek Greenway Trail





WOOD DALE
Illinois

WOOD DALE ROAD BRIDGE AESTHETIC IMPROVEMENTS



County Updates

Cook And DuPage County Update

CMAQ

TIGER

Local technical assistance

Bicycle and pedestrian plan

Other



The Illinois Tollway

**DRIVING
THE FUTURE**

Pace Update

Next Steps/ Next Meeting

Next meeting

- September 11, 2017

Location

- TBD

Topics

- Tolling outreach
- Illinois Route 390 grand opening event

Questions?

THANK YOU