



Elgin O'Hare Western Access Project Local Advisory Committee

July 13, 2015

Agenda

- } Feedback on local issues
- } Project status update
 - } Project/contract financial update
 - } Maintenance facility
- } Business and community outreach
- } Off-system improvements
 - } Touhy Avenue
 - } Taft Avenue
- } Update from Cook and DuPage counties
- } Next steps

Feedback on Local Issues

- } **What are you hearing?**
 - } Construction operations and traffic flow
 - } Tolling gantry installation
 - } Land acquisition
 - } Design features
 - } Development opportunities and trends
 - } Other

Tolling Gantry Installation



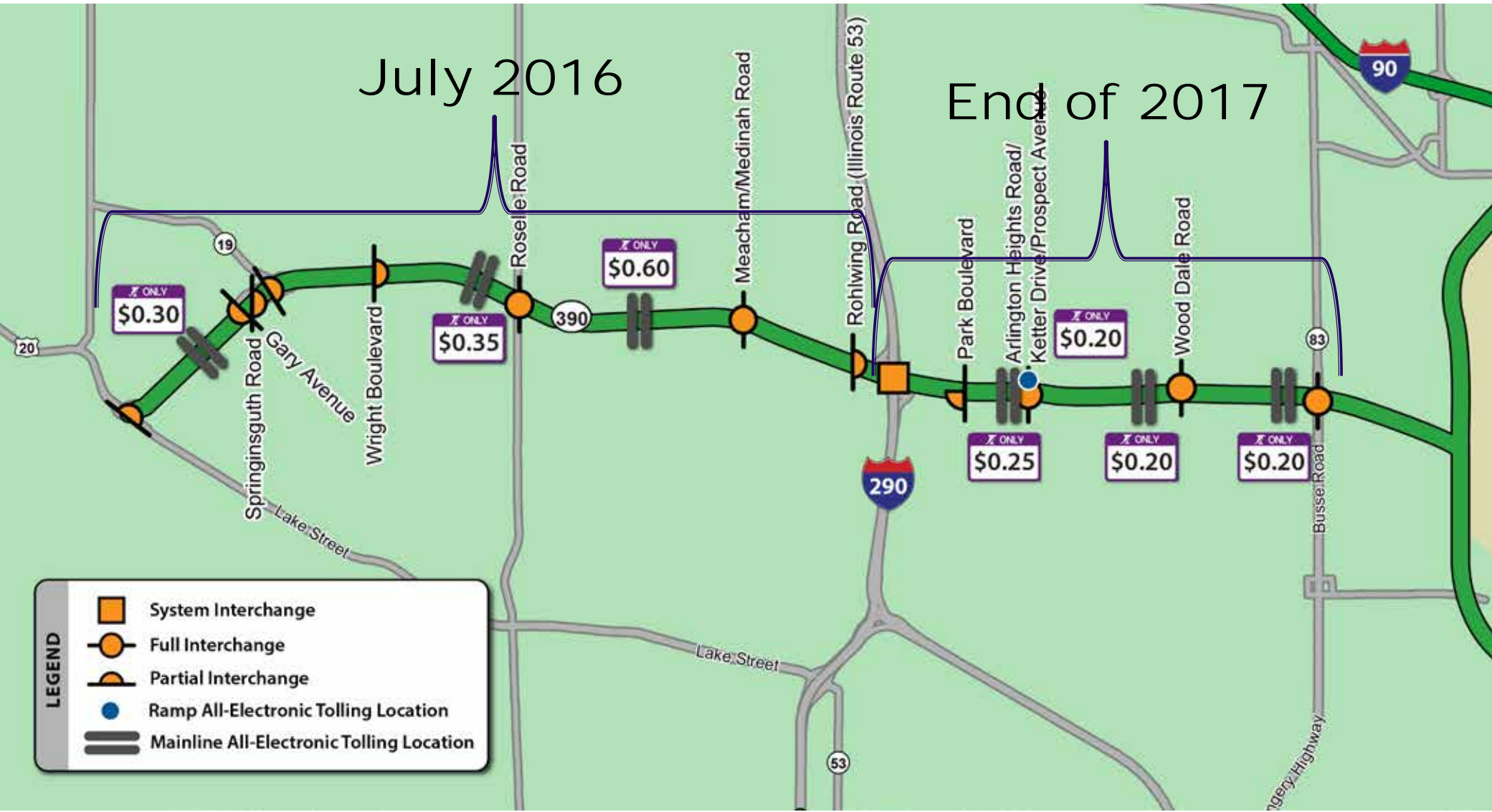
Illinois Route 390 Toll Rates and Locations

July 2016

End of 2017

LEGEND

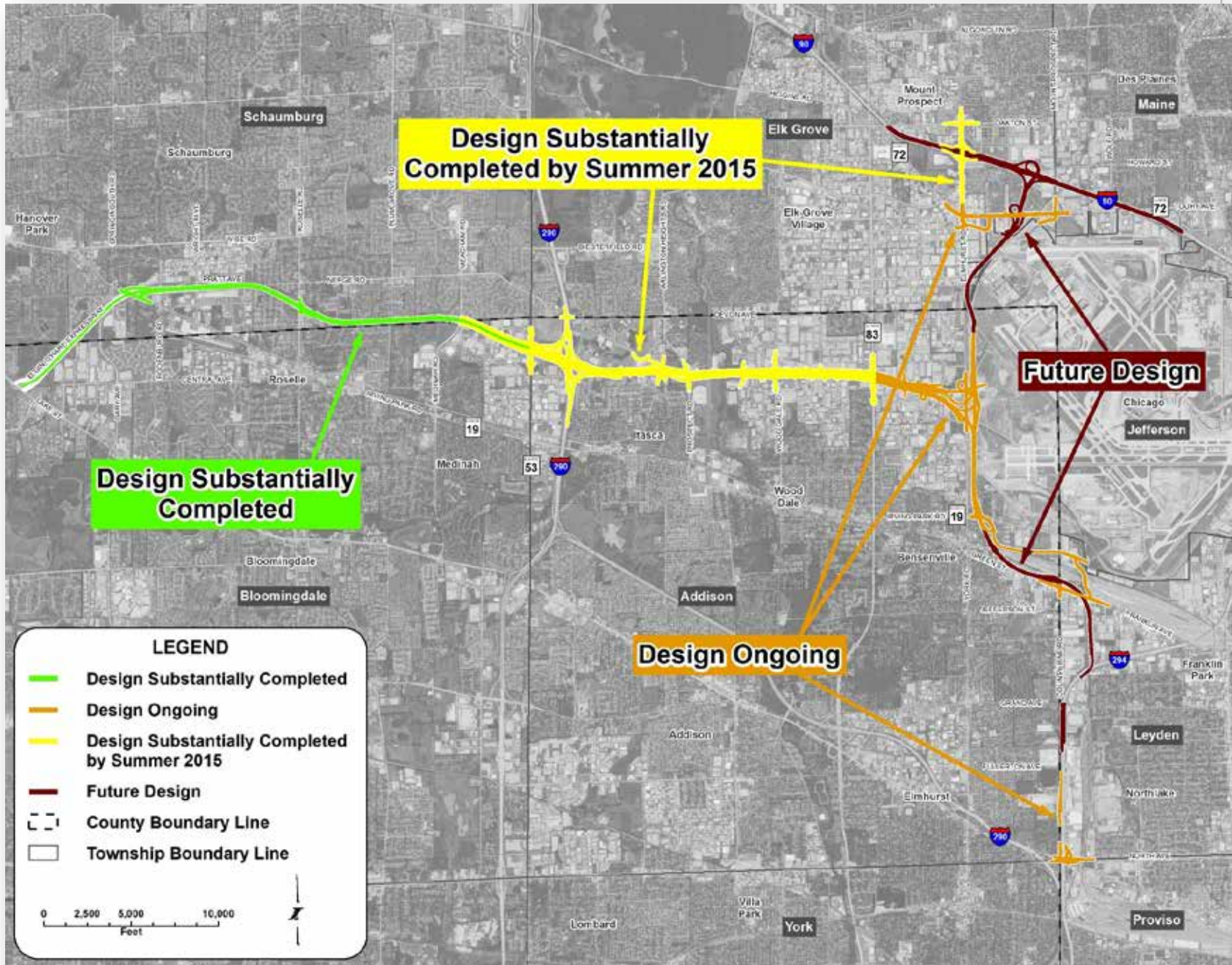
-  System Interchange
-  Full Interchange
-  Partial Interchange
-  Ramp All-Electronic Tolling Location
-  Mainline All-Electronic Tolling Location





Project Status Report

Design Status



Illinois Tollway Website Construction Contract Resources



- } Construction contract tracker
- } Bid letting and opening schedules
- } Active construction contracts by project

The screenshot shows the Illinois Tollway website's 'Construction and Engineering' page. The breadcrumb trail is highlighted with a blue circle: [www.illinoistollway.com](#) > [Doing Business](#) > [Construction and Engineering](#).

Doing Business

- Construction and Engineering
 - Construction Bid Calendar
 - Construction Bidding and Letting
 - Awards and Change Orders
 - Construction Drawings
 - Construction Frequently Asked Questions
 - Construction Permits
 - Consultant Contract Forms
 - Consultant Invoicing Forms
 - Manuals
 - Policies and Guidelines
 - Professional Services Bulletin
 - Specifications and Special Provisions
 - Procurement Reform
 - Research Reports
 - Training Programs
 - Approved Materials List
 - Construction Contract Meeting Materials
- Goods and Services
- Diversity Programs
- Tower and Fiber Leasing
- Towing and Vehicle Recovery
- Auctions and Real Estate
- Information Signage Guidelines
- Employee Resource Planning

Construction and Engineering

Introduction

This section serves as a central repository for Tollway engineering standards and publications. Documents found on this site will principally be used by Tollway project managers to guide design section engineers and construction managers during design development and contract implementation. The most current and up-to-date documents adopted by the Tollway will be posted.

The Illinois Tollway hosted a training webinar on Thursday, July 12, 2012 for contractors who wanted to learn more about how to do business with Tollway. Organizations involved in the heavy-highway construction industry who are interested in having a role in the Tollway's new 15-year, \$12 billion capital program, were invited to participate.

Documents and Resources

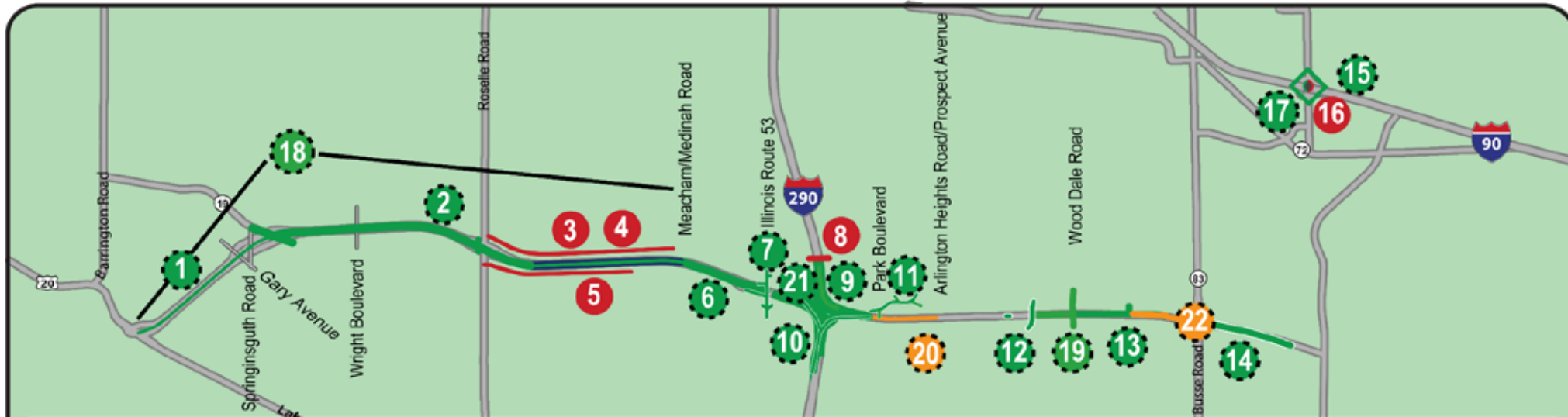
This section is designed to be simple and user friendly. Documents are divided into these main sections:

Contractor Resources	Consultant Resources
Letting and Bidding	Consultant Contract Forms
Manuals	Consultant Invoicing Forms
Contractor Forms	Manuals
Construction Bid Calendar	Bulletins
Online Plan Room	Standard Drawings
Approved Materials and CCDD Facilities Lists	Mentor/Protégé Agreements on Awarded Contracts
Construction Contract Meeting Materials	
Joint Resources	
Construction and Professional Services Awards and Change Orders	
Active Construction and Professional Services Contracts	
Standard Specifications and Special Provisions	
A Forms and AC Forms	
Professional Services Bulletin	
Frequently Asked Questions	
Permit and Utility Information	

Contract Update

- } Thirty-one engineering contracts totaling \$241.8 million awarded since 2012
- } Twenty-nine construction contracts totaling \$560.8 million awarded since 2012
- } Five construction contracts complete
- } Thirteen total construction contracts starting in 2015; four more this year

EOWA Project Construction Status



2013-2015 Construction Awards*

- 1 Toll plaza/ITS - U.S. Route 20 to I-290
- 2 Rehabilitation/widening - Illinois Route 19 to Roselle Road
- 3 Rehabilitation/widening - Roselle Road to Meacham Road
- 4 Noisewalls - westbound Roselle Road to Meacham Road
- 5 Noisewalls - eastbound Roselle Road to Meacham Road
- 6 Roadway reconstruction - Meacham/Medinah to Rohlwing Road
- 7 Rohlwing Road (Illinois Route 53) Bridge
- 8 Devon Avenue Bridge
- 9 I-290 Interchange
- 10 Westbound I-290 ramp to westbound Illinois Route 390
- 11 Park Boulevard, Pierce Road and Ketter Drive (Hamilton Lakes access improvements)
- 12 Salt Creek and Mittel Boulevard bridges
- 13 Lively Boulevard Bridge and eastbound frontage road
- 14 Advance drainage work - Illinois Route 83 to Willow Creek
- 15 Elmhurst Road at I-90 Interchange on I-90
- 16 Elmhurst Road southbound bridge over I-90
- 17 JAWA Watermain Relocation - Elmhurst Road Interchange
- 18 Rehabilitation from Lake Street (U.S. Route 20) to Meacham Road/Medinah Road
- 19 Wood Dale Road Bridge over Illinois Route 390
- 20 Illinois Route 390: Park Boulevard to Arlington Heights Road
- 21 Eastbound I-290 to eastbound Illinois Route 390
- 22 Illinois Route 390: Lively Boulevard to Illinois Route 83 with Illinois Route 83 Bridge

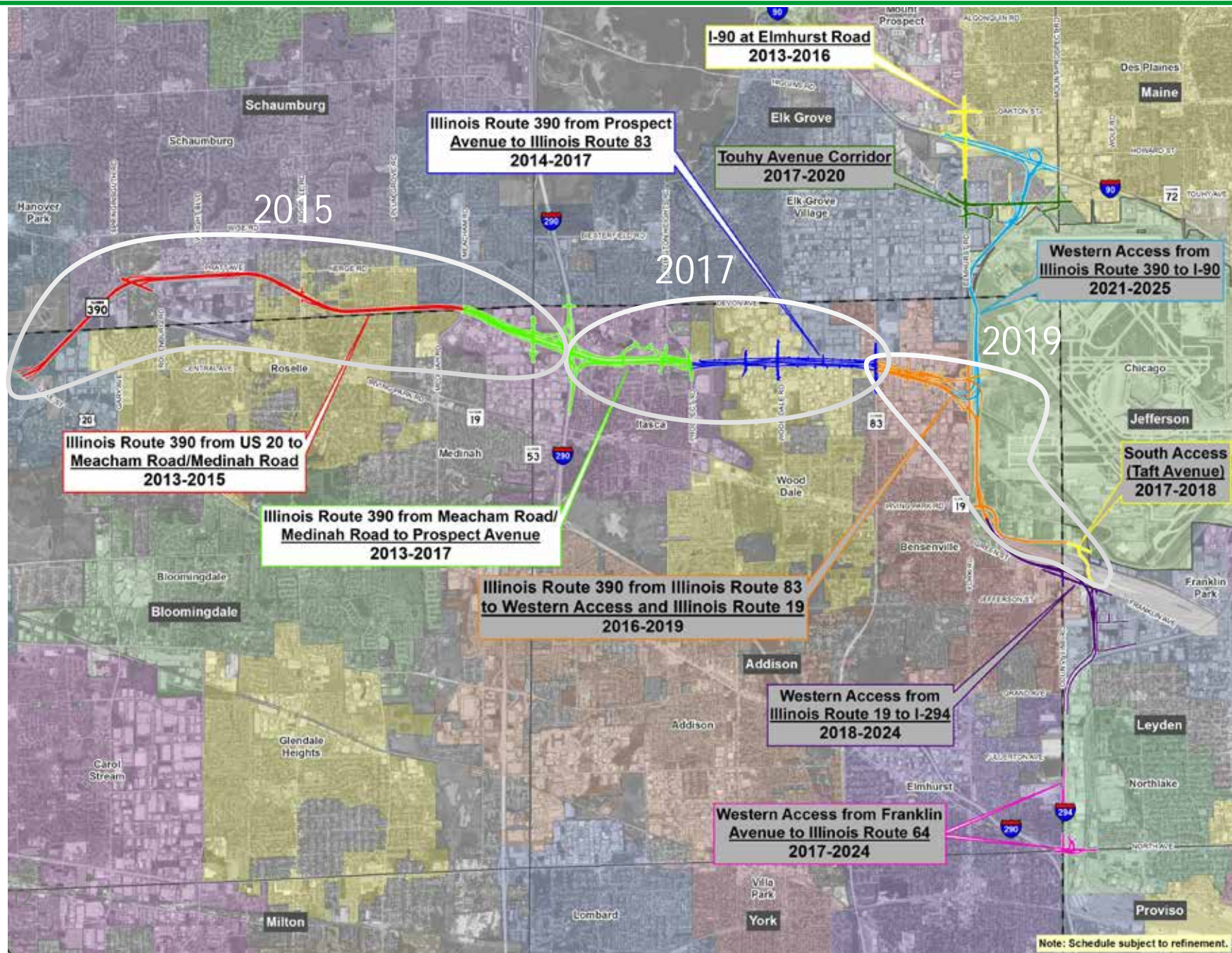
⦿ Contract Awarded * Schedule subject to refinement; various building demolition contracts not shown.

Text Colors: Complete / Ongoing / 2015 Look Ahead

I-290 Interchange Project – Flyover Ramp Opening Soon



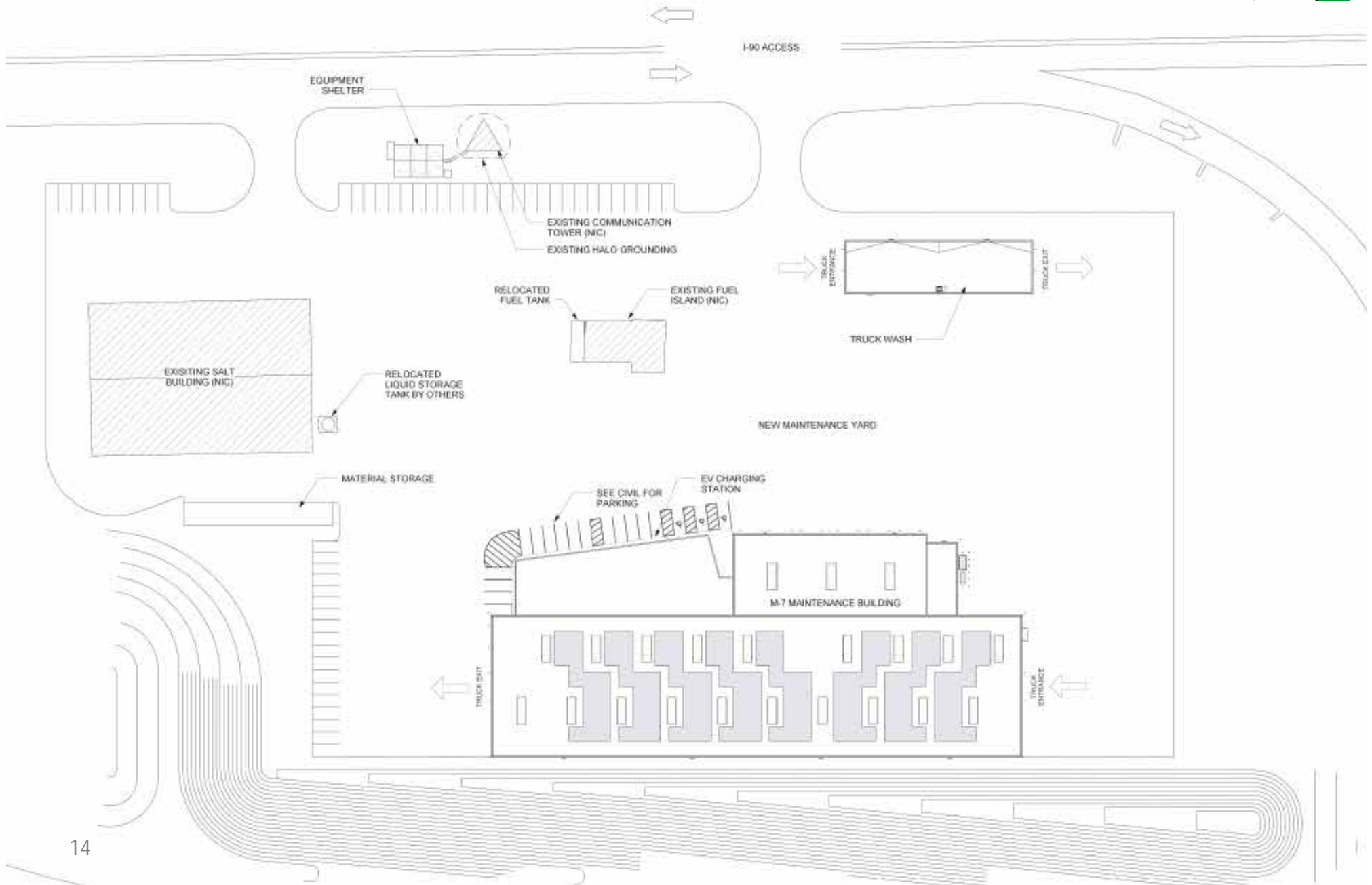
Construction Implementation Timeline



Maintenance Facility Prototype



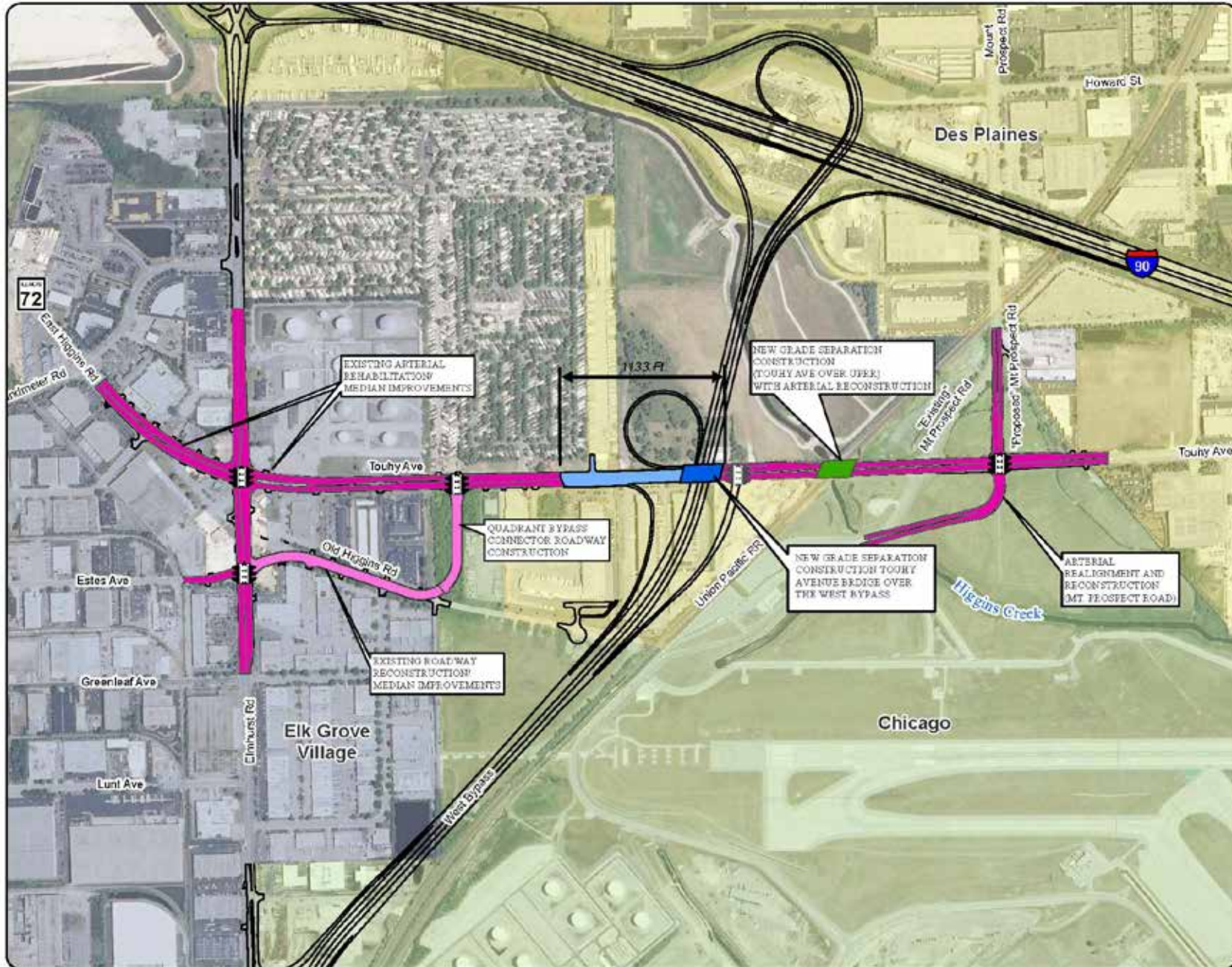
Maintenance Facility Sample Site Plan



Business and Community Outreach

- } **Since last LAC meeting**
 - } Local coordination – nine meetings
 - } Greater O’Hare Area Regional Business Association membership luncheon – July 8
- } **Upcoming**
 - } Franklin Park open house – July 17
 - } Other outreach?

Off-system Improvements – Touhy Avenue

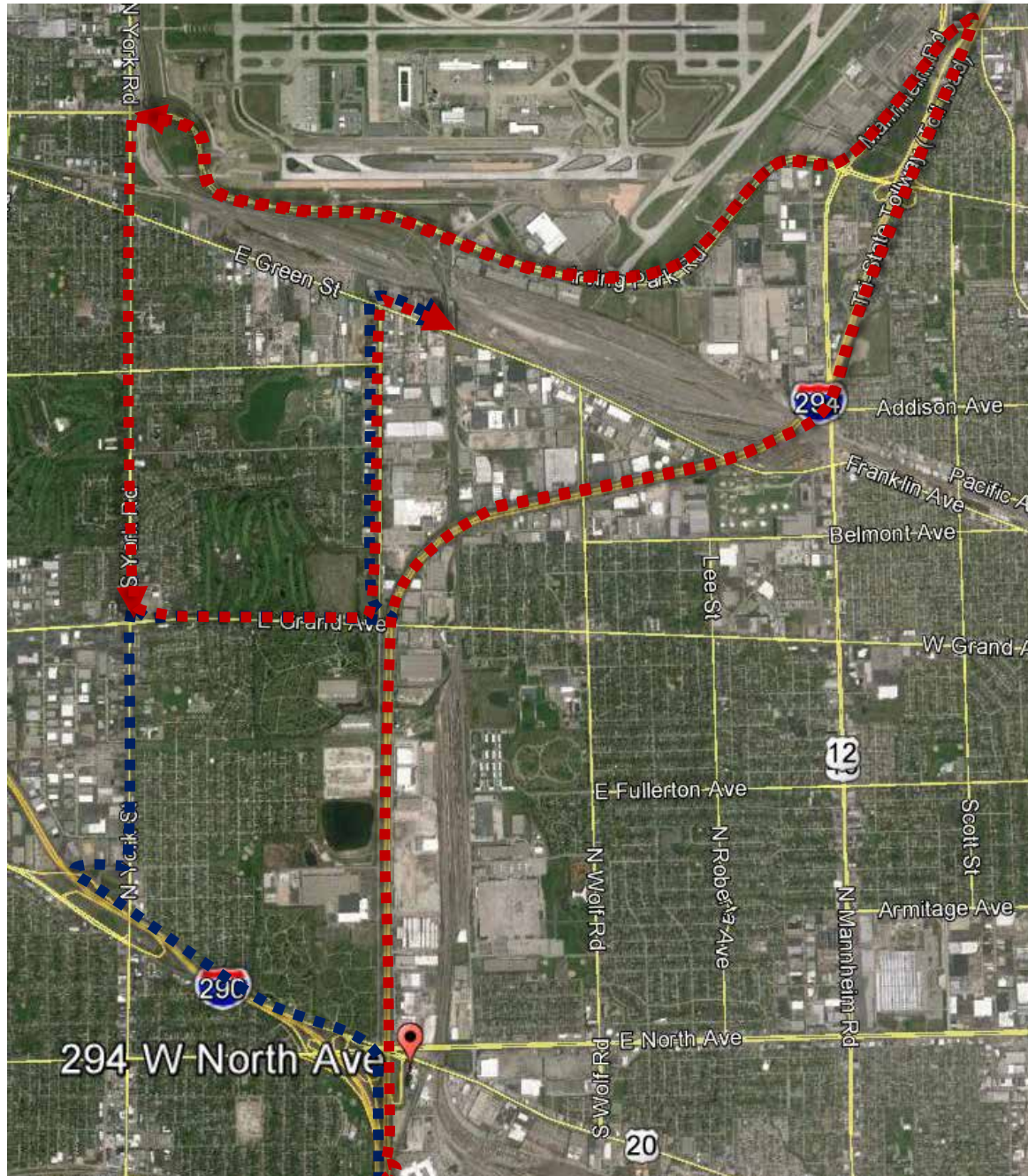


I-294 Access Improvements - Existing Conditions

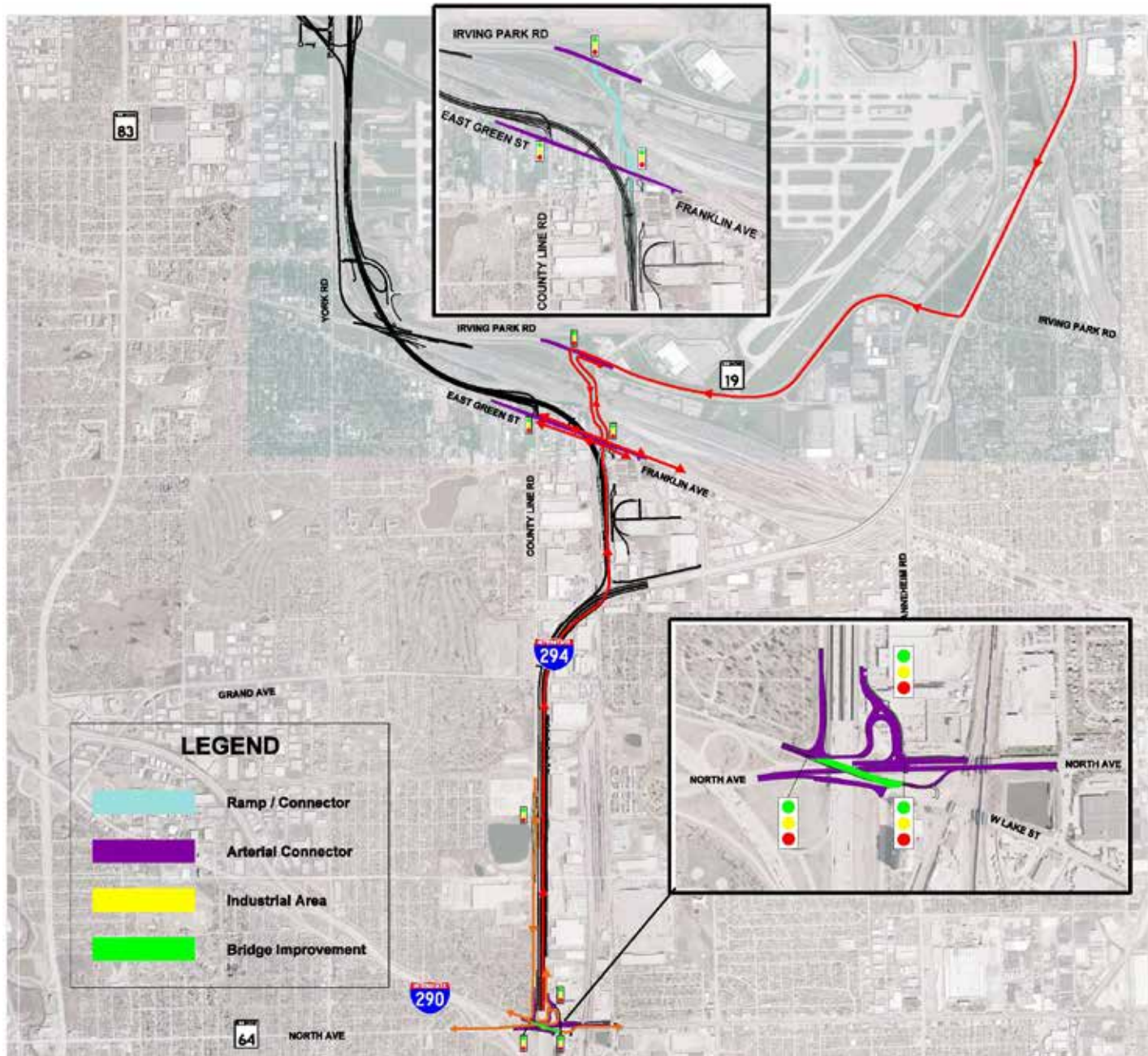
- } Limited direct access to
 - } Bensenville/Franklin Park Industrial Area
 - } CP Intermodal Facility
 - } O'Hare South Cargo Area
 - } Canadian Pacific (CP) Intermodal Facility



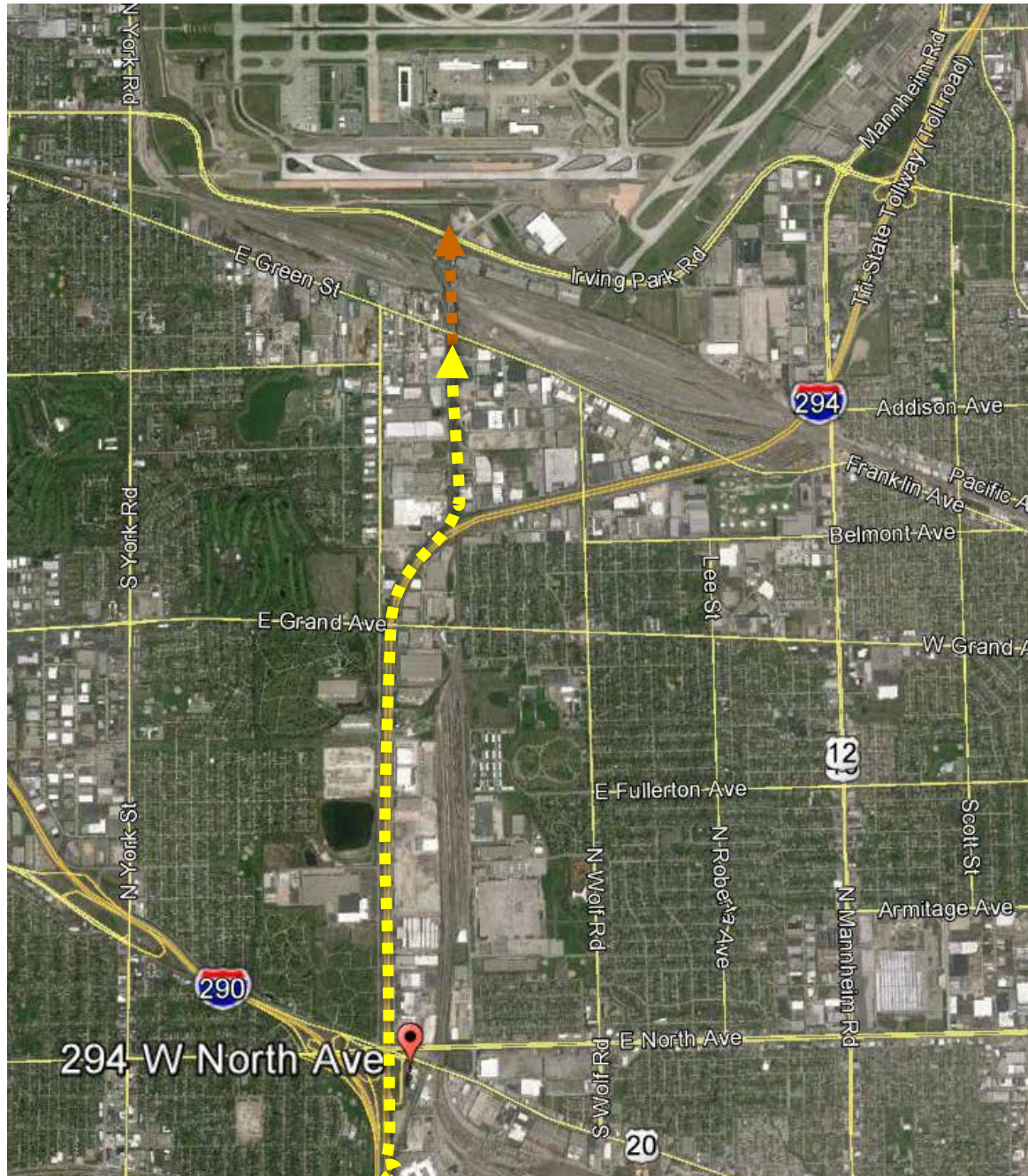
Existing Travel Movement - I-294 Access



I-294 Access Improvements



Future Travel Movement - I-294 Access



Taft Avenue Area Improvements



Note: Design and aesthetic features are preliminary and subject to refinement.



Funding To Date From Others

} \$112 million identified under the leadership of DuPage County

Source	Amount
Federal: CMAQ Award	\$68,739,000
Cook County Local Match: CMAQ Award	\$8,685,000
In-Kind Contributions (Anticipated)	\$34,877,261
Committed Funding	\$112,301,261

In-Kind Contributions		
Agency	Contribution	Value
Cook County	Design and Construction Engineering for Touhy Avenue	\$6,150,000
DuPage County	Thorndale Avenue right-of-way	\$25,445,700
Village of Franklin Park	Design work and fee waivers for proposed I-294 Industrial Park drainage improvements	\$413,400
City of Northlake	Final design of I-294 at IL 64	\$2,868,161
Total Value of In-Kind Contributions		\$34,877,261

The project is in the early stages of implementation. Under the leadership of DuPage County the project team anticipates that by 2025 it will be able to secure additional funding (e.g., CMAQ, TIGER) or additional in-kind contributions (e.g., right-of-way or final design) for a total of \$300 million contribution from local and other funding sources.



Cook and DuPage County Update

- } Grant applications
 - } CMAQ
 - } TIGER
 - } Local Technical Assistance (LTA)

Next Steps/Next Meeting

- } **Next meeting**
 - } September 14, 2015???
- } **Location**
 - } TBD
- } **Topics**
 - } 2016 construction contracts
 - } ???



Questions?
