



---

# Elgin O'Hare Western Access Project Local Advisory Committee

May 11, 2015

---

# Agenda

---

- } Feedback on local issues
- } Project status update
  - } Open house recap
- } Financing update
- } "Building Green" initiatives
- } Next steps

# Feedback on Local Issues

---

- } **What are you hearing?**
  - } Construction operations and traffic flow
  - } Land acquisition
  - } Design features
  - } Development opportunities and trends
  - } Other
- } **Tolling outreach ideas?**
  - } Toll gantry installation scheduled to begin June 2015
  - } Tolling on Illinois Route 390 from Lake Street (U.S. Route 20) to I-290 begins in 2016
- } **Tollway website information**
  - } EOWA corridor overview
  - } Drive-through simulations of future travel movements
  - } Cameras
    - } I-290 Interchange
    - } Illinois Route 390
    - } Elmhurst Road Interchange Project at I-90
    - } Rohlwing Road Bridge Project
  - } Concept drawings
  - } LAC page



---

# Project Status Report

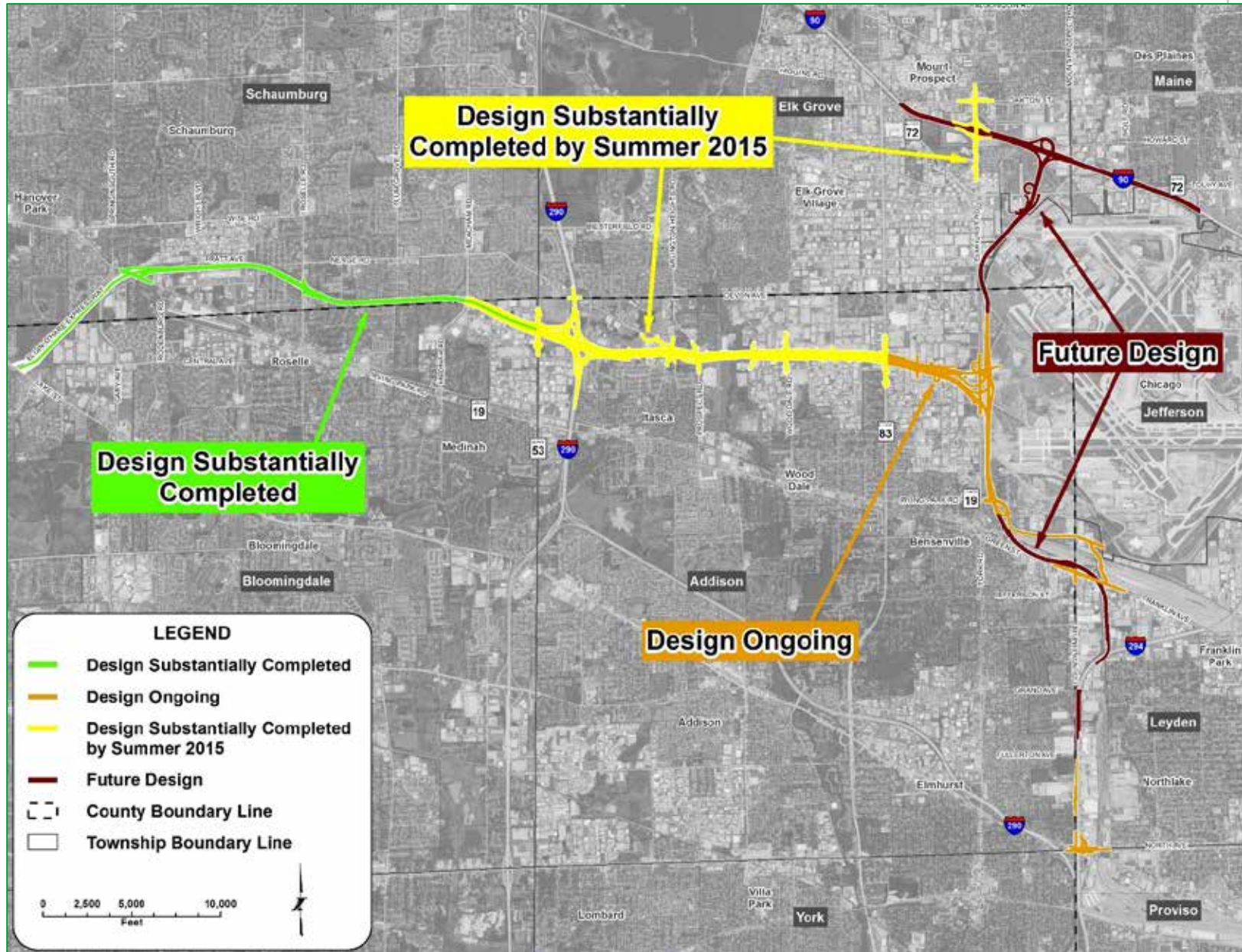
---

# Contract Update

---

- } Thirty-one engineering contracts totaling \$241.8 million awarded since 2012
- } Twenty-four construction contracts totaling \$409.5 million awarded since 2012
- } Five construction contracts complete
- } Ten new construction contracts start in 2015

# Design Status





**LEGEND**

-  Complete in 2015
-  Construction 2015-2017
-  Construction 2016-2019
-  Construction 2016-2024
-  Construction 2022-2025
-  New and Improved Interchanges

**COMPLETE  
in 2015**

- NEW AND IMPROVED INTERCHANGE LOCATIONS**
1. Illinois Route 19
  2. Meacham/Medinah Road
  3. I-290
  4. Park Boulevard
  5. Arlington Heights Road/Prospect Avenue
  6. Wood Dale Road
  7. Illinois Route 83
  8. Elmhurst Road at I-90
  9. I-90
  10. Higgins Road (Illinois Route 72)
  11. Illinois Route 390
  12. Illinois Route 19
  13. Franklin Avenue/Green Street
  14. I-294
  15. North Avenue (Illinois Route 64)



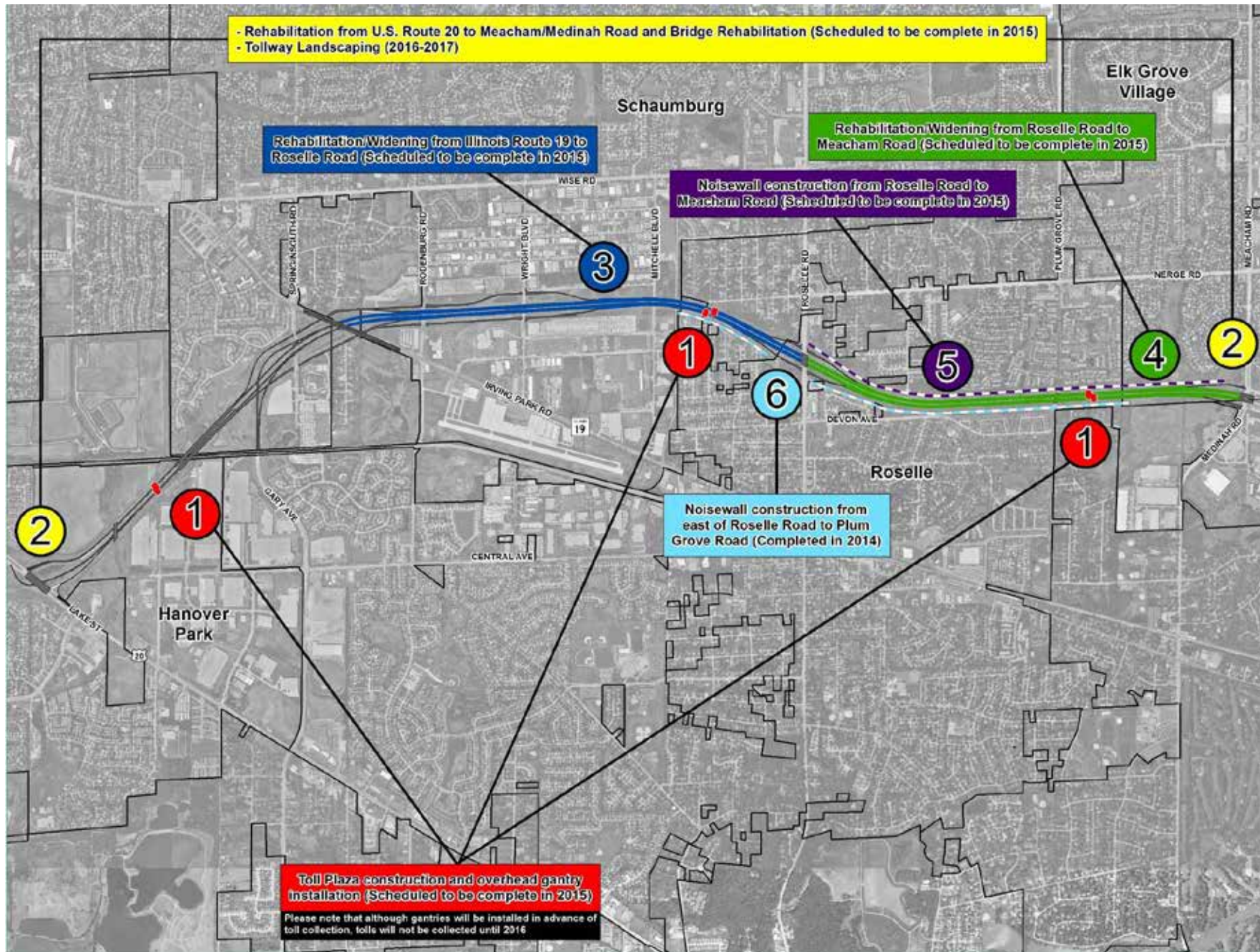
**ELGIN O'HARE WESTERN ACCESS PROJECT**  
A New, All-Electronic Toll Road



Updated: 04/13/15

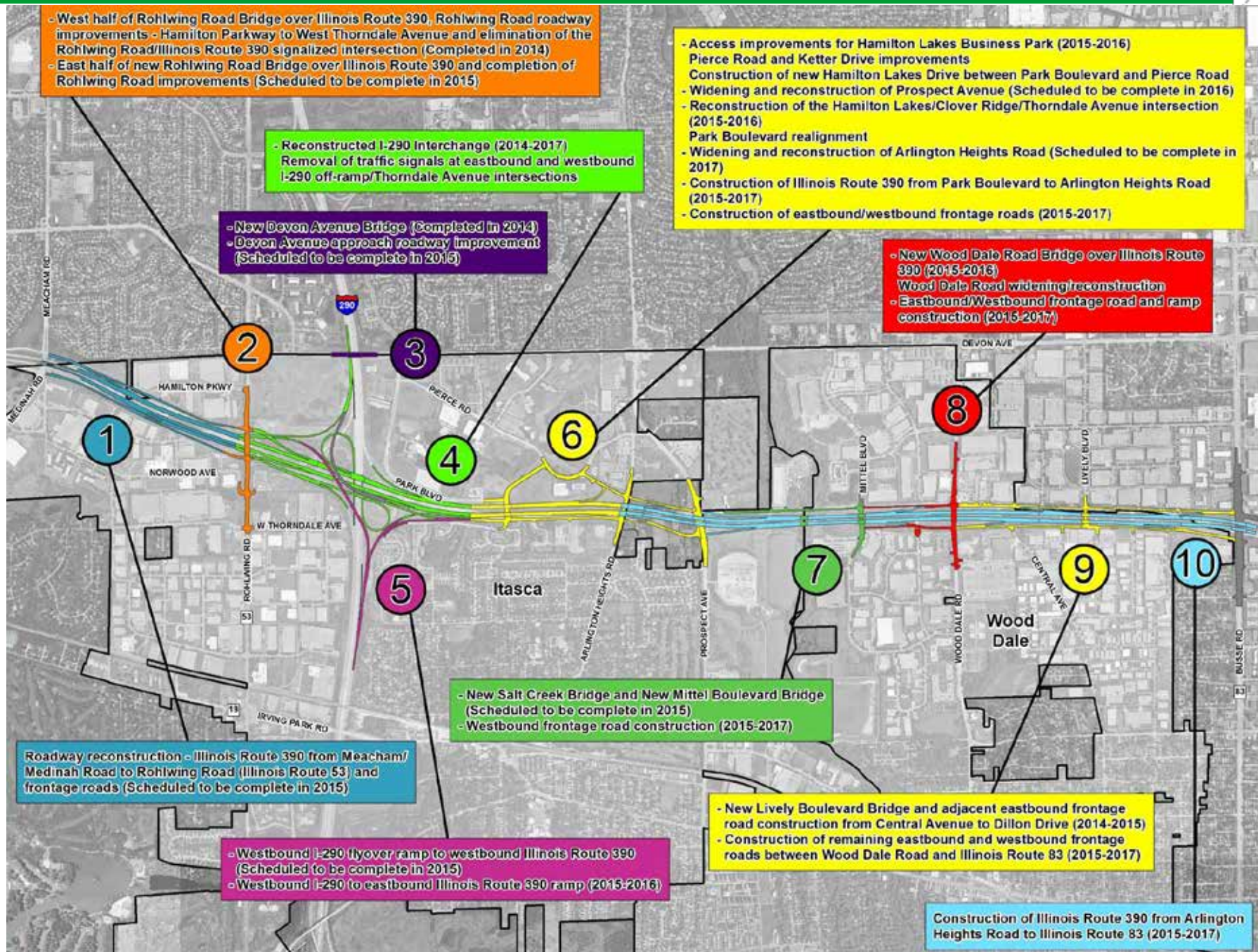


# 2015-2017– Lake Street (U.S. Route 20) to Meacham Road/ Medinah Road



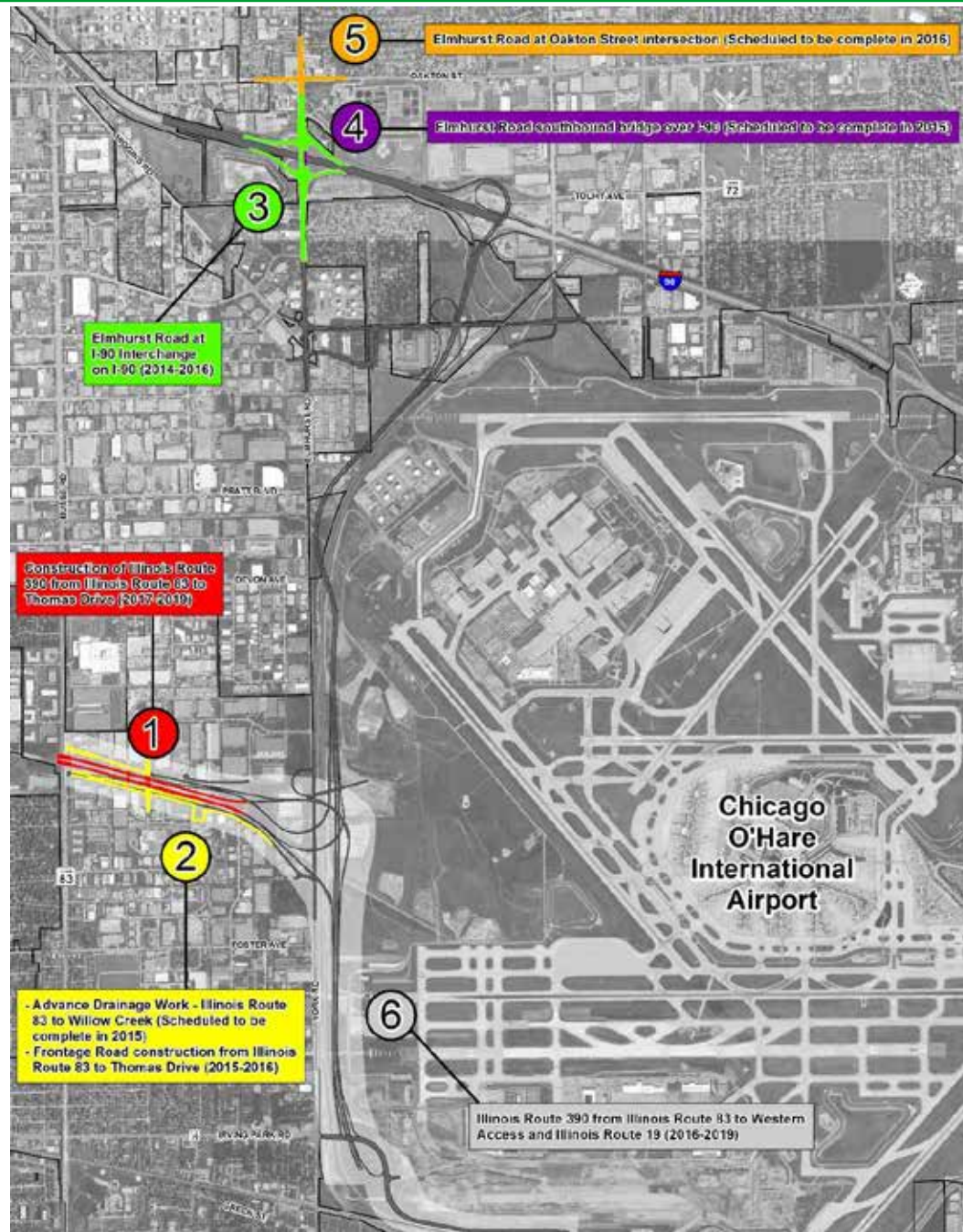


# 2015-2017 Construction – Meacham Road/ Medinah Road to Illinois Route 83





# 2015-2017 Construction – West Bypass and Elmhurst Road at I-90 Interchange



# Business and Community Outreach

---

- } **Since last LAC meeting**
  - } Local coordination – six meetings
  - } Hamilton Lakes Business Park – March 17
  - } Choose DuPage – March 25
  - } Quarterly Mayor’s Meeting – April 17
  - } EOWA Project public open house – April 22
- } **Upcoming**
  - } 2015 outreach meetings – as needed
  - } Other outreach?

# 2015 EOWA Project Open House

## } Issues and Questions

- } Tolling
- } Noisewalls
- } Construction
  - } Impacts and staging
  - } Post-construction restoration
- } Access changes
- } Access to O'Hare Airport
- } Design modifications
- } Potential right-of-way needs
- } Limited expansion/growth opportunities in project corridor
- } Airplane noise
- } Bike lanes
- } Aesthetics/site screening
- } Ramp signing (businesses/services)

## } 300+ attended

- } 13 property owners met with the land acquisition team
- } Elected officials







# Cook and DuPage County Update

---

} Grant applications



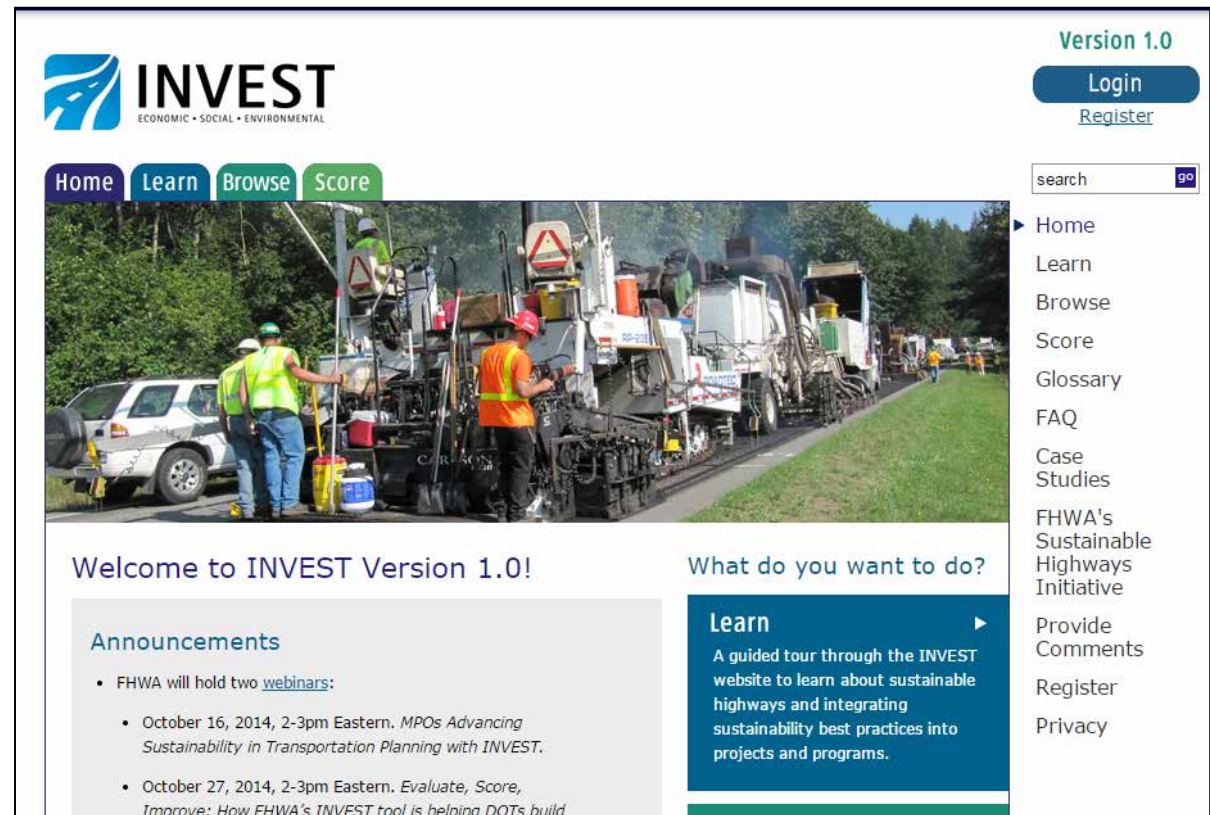
---

# Sustainability and Environmental Initiatives

---

# INVEST Overview

- } FHWA program
  - } Infrastructure voluntary Evaluation sustainability tool (INVEST)
  - } Practical
  - } Self-evaluation
  - } Voluntary
- } Three Modules
  - } System planning
  - } Project development
  - } Operations and maintenance



The screenshot shows the homepage of the INVEST website. At the top left is the INVEST logo with the tagline 'ECONOMIC • SOCIAL • ENVIRONMENTAL'. Below the logo are navigation tabs for 'Home', 'Learn', 'Browse', and 'Score'. A large banner image shows construction workers in safety vests working on a road. To the right of the banner, there is a 'Welcome to INVEST Version 1.0!' message. Below this, there is an 'Announcements' section with a list of two webinars: one on October 16, 2014, about MPOs Advancing Sustainability in Transportation Planning with INVEST, and another on October 27, 2014, about Evaluate, Score, Improve: How FHWA's INVEST tool is helping DOTs build. On the right side of the page, there is a 'Version 1.0' label, 'Login' and 'Register' buttons, a search bar, and a vertical navigation menu with links to Home, Learn, Browse, Score, Glossary, FAQ, Case Studies, FHWA's Sustainable Highways Initiative, Provide Comments, Register, and Privacy.

# Project Development Criteria

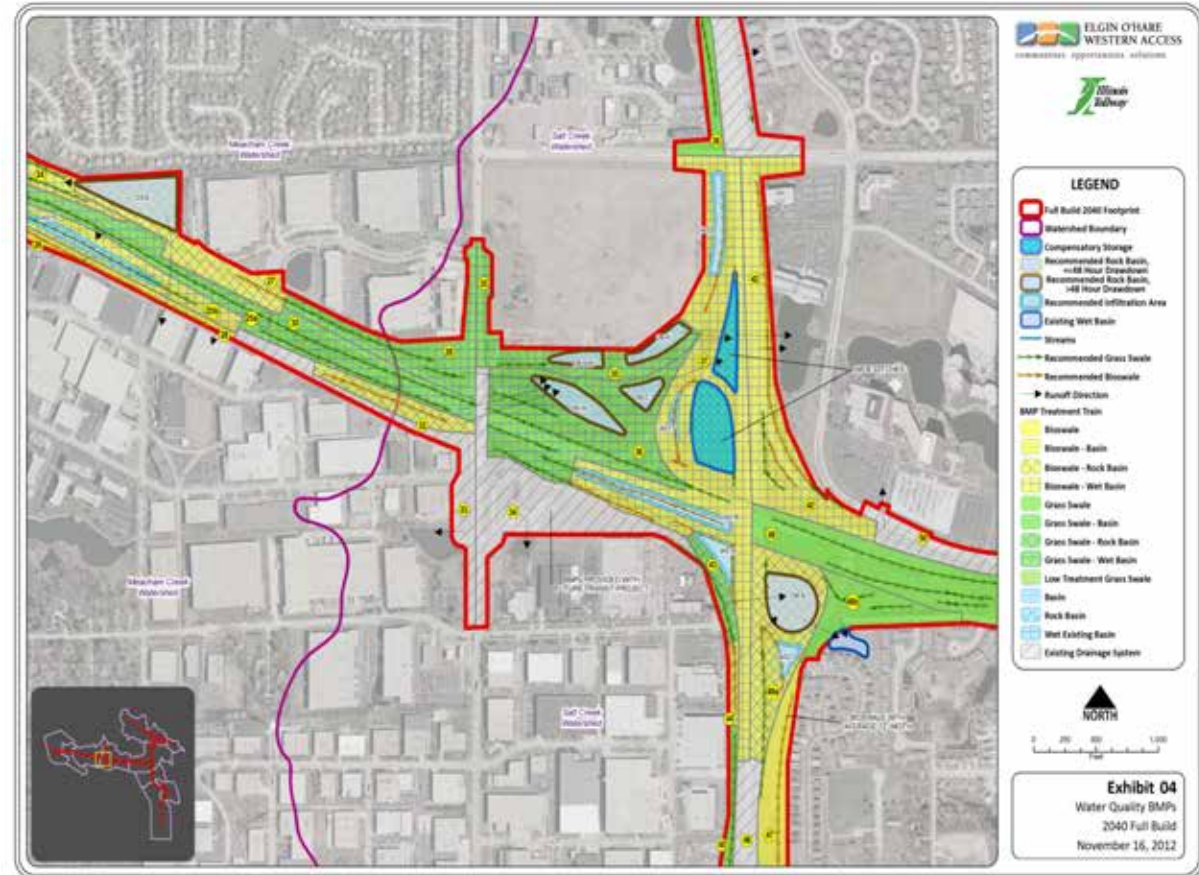
- } **Phased approach**
  - } Planning
  - } Design
  - } Construction
- } **Encourages smart practices**
  - } Integrated design
  - } Balancing priorities
  - } Communication

INVEST PROJECT DEVELOPMENT CRITERIA			
PD-1	Economic Analyses	PD-16	Scenic, Natural, or Recreational Qualities
PD-2	Lifecycle Cost Analysis	PD-17	Energy Efficiency
PD-3	Context Sensitive Project Development	PD-18	Site Vegetation
PD-4	Highway and Traffic Safety	PD-19	Reduce and Reuse Materials
PD-5	Educational Outreach	PD-20	Recycle Materials
PD-6	Tracking Environmental Commitments	PD-21	Earthwork Balance
PD-7	Habitat Restoration	PD-22	Long-Life Pavement Design
PD-8	Stormwater	PD-23	Reduced Energy and Emissions in Pavement Materials
PD-9	Ecological Connectivity	PD-24	Contractor Warranty
PD-10	Pedestrian Access	PD-25	Construction Environmental Training
PD-11	Bicycle Access	PD-26	Construction Equipment Emission Reduction
PD-12	Transit & HOV Access	PD-27	Construction Noise Mitigation
PD-13	Freight Mobility	PD-28	Construction Quality Control Plan
PD-14	ITS for System Operations	PD-29	Construction Waste Management
PD-15	Historical, Archaeological, and Cultural Preservation		



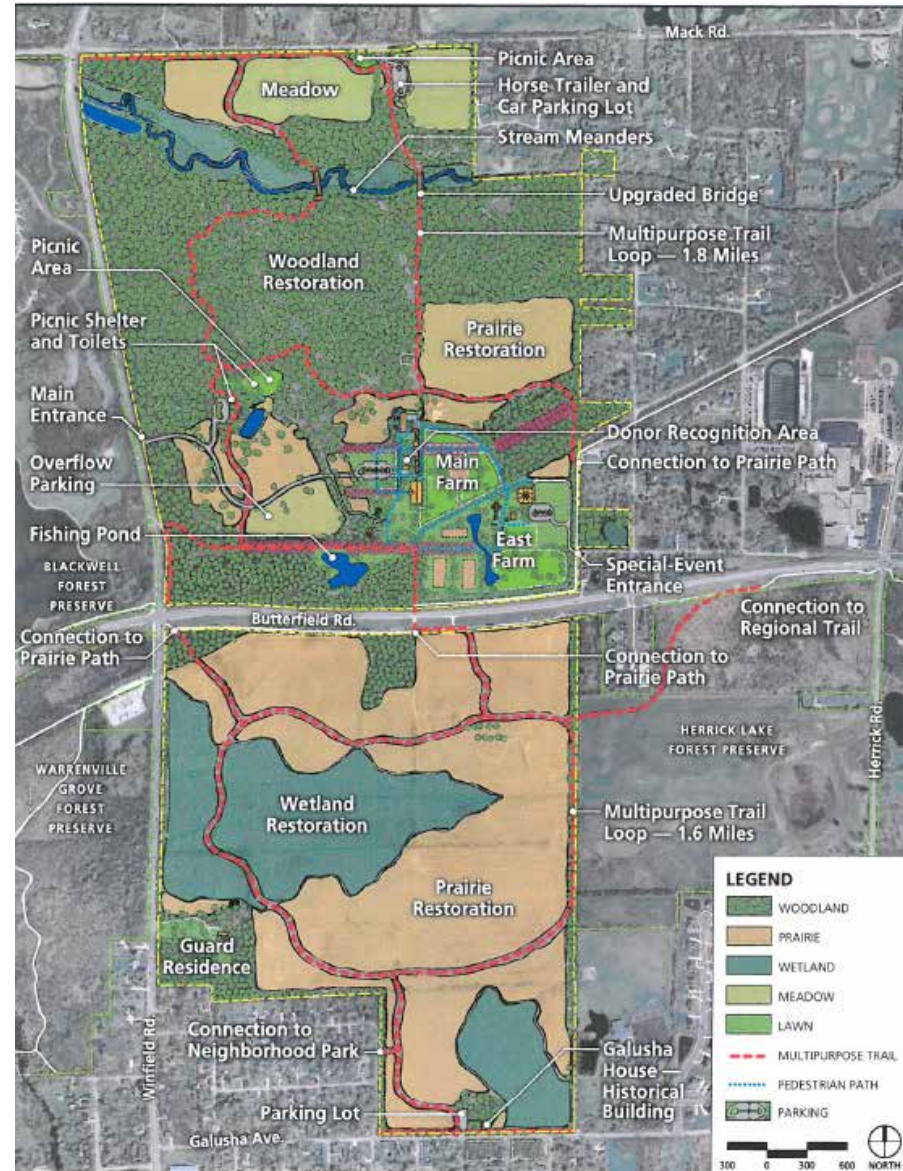
# Stormwater Best Management Practices

- } Watershed approach with a water quality volume goal of 1.25"
- } 50+ detention sites
- } 10+ compensatory storage sites
- } 50+ bioswales
- } 10+ infiltration sites
- } ~40 miles of linear BMPs
- } ~126 acres of new stormwater storage



# Mitigation (Spring Brook Creek)

- } IGA with the Forest Preserve District of DuPage County (FPDDC)
- } Tollway funded IGA
- } FPDDC design, construction and mitigation site monitoring lead
- } Stream corridor included in FPDDC's St. James Farm Forest Preserve Master Plan

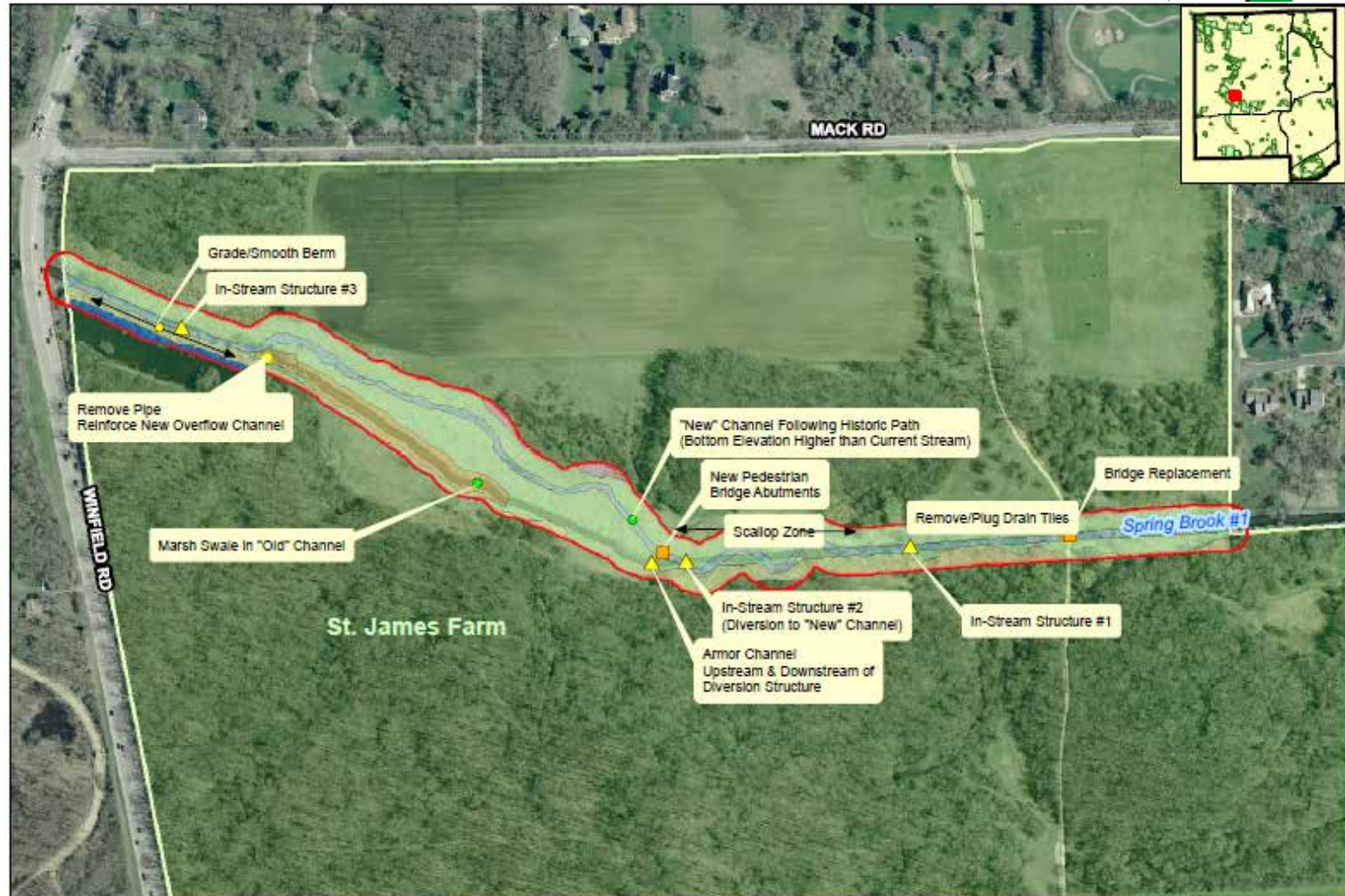




# Mitigation (Spring Brook Creek)

Performance objectives for restoring 3,200 linear feet of Spring Brook Creek:

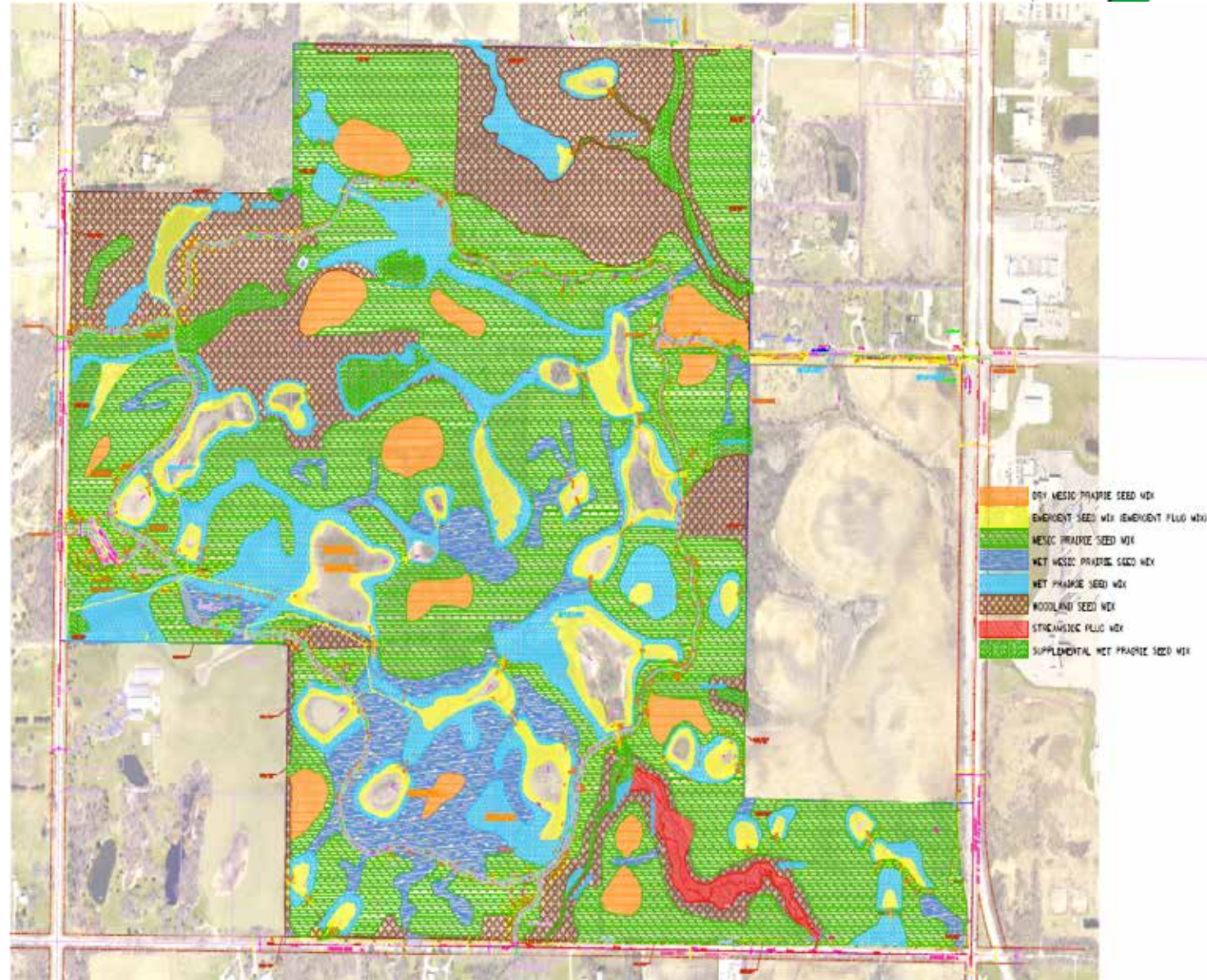
- } Hydrology
- } Hydraulics
- } Geomorphology
- } Physicochemical
- } Biology





# Mitigation (Pine Dunes)

- } IGA with the Forest Preserve District of Lake County (FPDLC)
- } 315 acres of FPDLC property
  - } Rolling topography with oak and hickory woodlands
  - } ~100 acres of wetland restoration
  - } ~200 acres of prairie restoration
  - } ~3 miles of shared-use paths for pedestrians and bicycles





# Chloride Reduction Program

---

- } **Overall watershed salt reduction**
  - } Standards for Salt Creek and West Branch chloride
  - } Chloride is an impairment to aquatic life
- } **MOU with DuPage River Salt Creek Workgroup**
  - } Tollway to reduce salt use by 20 percent
  - } Participation beyond Tollway right-of-way
  - } Collaboration with neighboring municipalities, target 1,853 tons salt

# Next Steps/Next Meeting

---

- } **Next meeting**
  - } July 13, 2015???
- } **Location**
  - } TBD
- } **Topics**
  - } ???



---

# Questions?

---