



Elgin O'Hare Western Access Project Local Advisory Committee

March 16, 2015

Agenda

- } Feedback on local issues
- } Project status update
- } 2015 construction update
- } Illinois Route 390 frontage road and local road improvements
- } DuPage County update
- } "Building Green" initiatives
- } Next steps

Feedback on Local Issues

- } **What are you hearing?**
 - } Construction operations and traffic flow
 - } Land acquisition
 - } Design features
 - } Development opportunities and trends
 - } Other
- } **Tolling outreach ideas?**

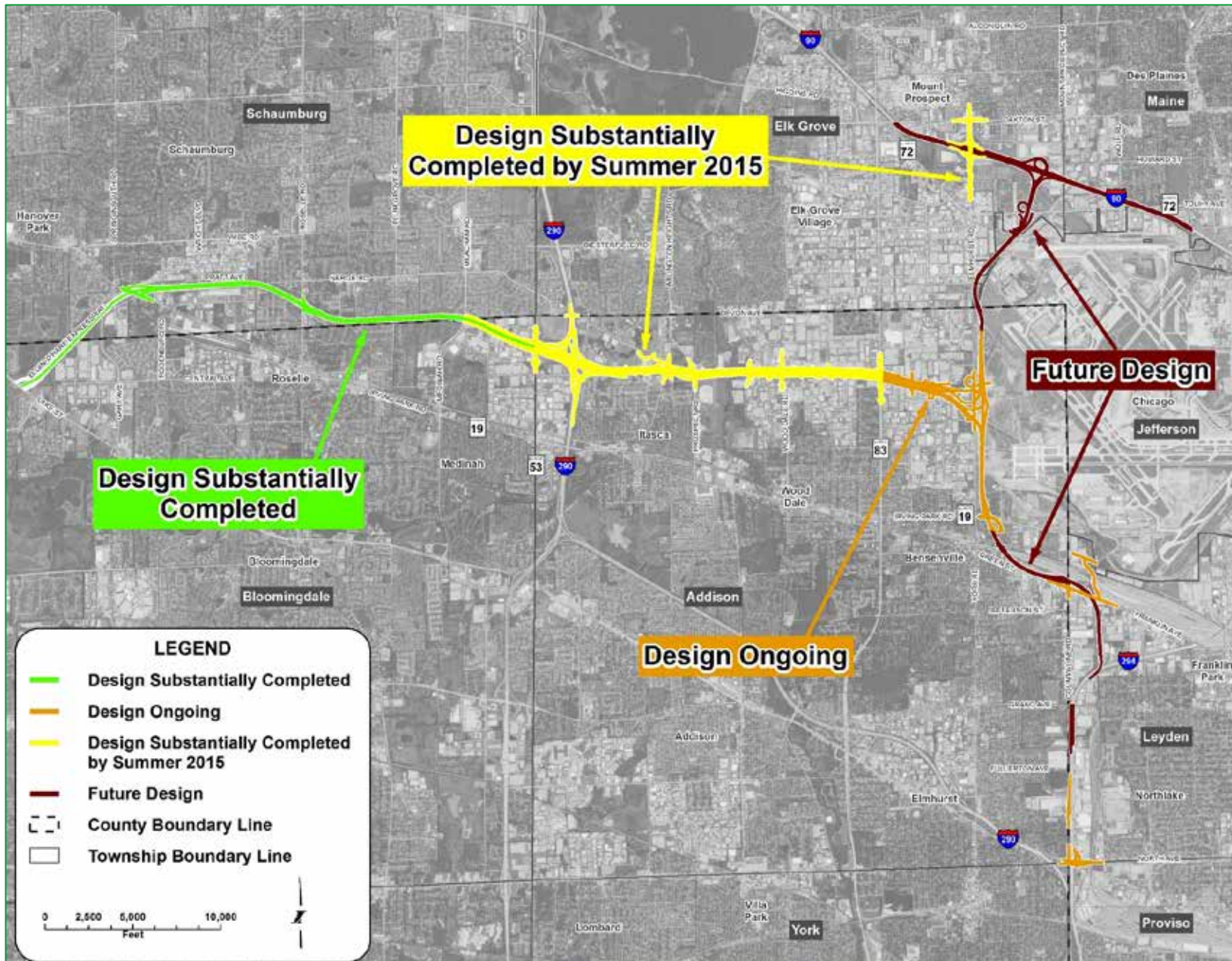


Project Status Report

Contract Update

- } Thirty engineering contracts totaling \$237.8 million awarded since 2012
- } Twenty-two construction contracts totaling \$372 million awarded since 2012
- } Five construction contracts complete
- } Nine new construction contracts start in 2015

Design Status



LEGEND

-  Complete in 2015
-  Construction 2015-2017
-  Construction 2016-2019
-  Construction 2022-2025
-  Construction 2016-2024
-  New and Improved Interchanges



**COMPLETE
in 2015**

NEW AND IMPROVED INTERCHANGE LOCATIONS

1. Meacham/Medinah Road
2. I-290
3. Park Boulevard
4. Prospect Avenue/Arlington Heights Road
5. Wood Dale Road
6. Illinois Route 83
7. Elmhurst Road at I-90



ELGIN O'HARE WESTERN ACCESS PROJECT
A New, All-Electronic Toll Road



Updated: 02/26/15

Illinois Route 390 Frontage Roads





THE ELGIN O'HARE WESTERN ACCESS PROJECT

A New, All-Electronic Toll Road

As of February 2015. Subject to change.

MOVE ILLINOIS

Updated: 02/26/15

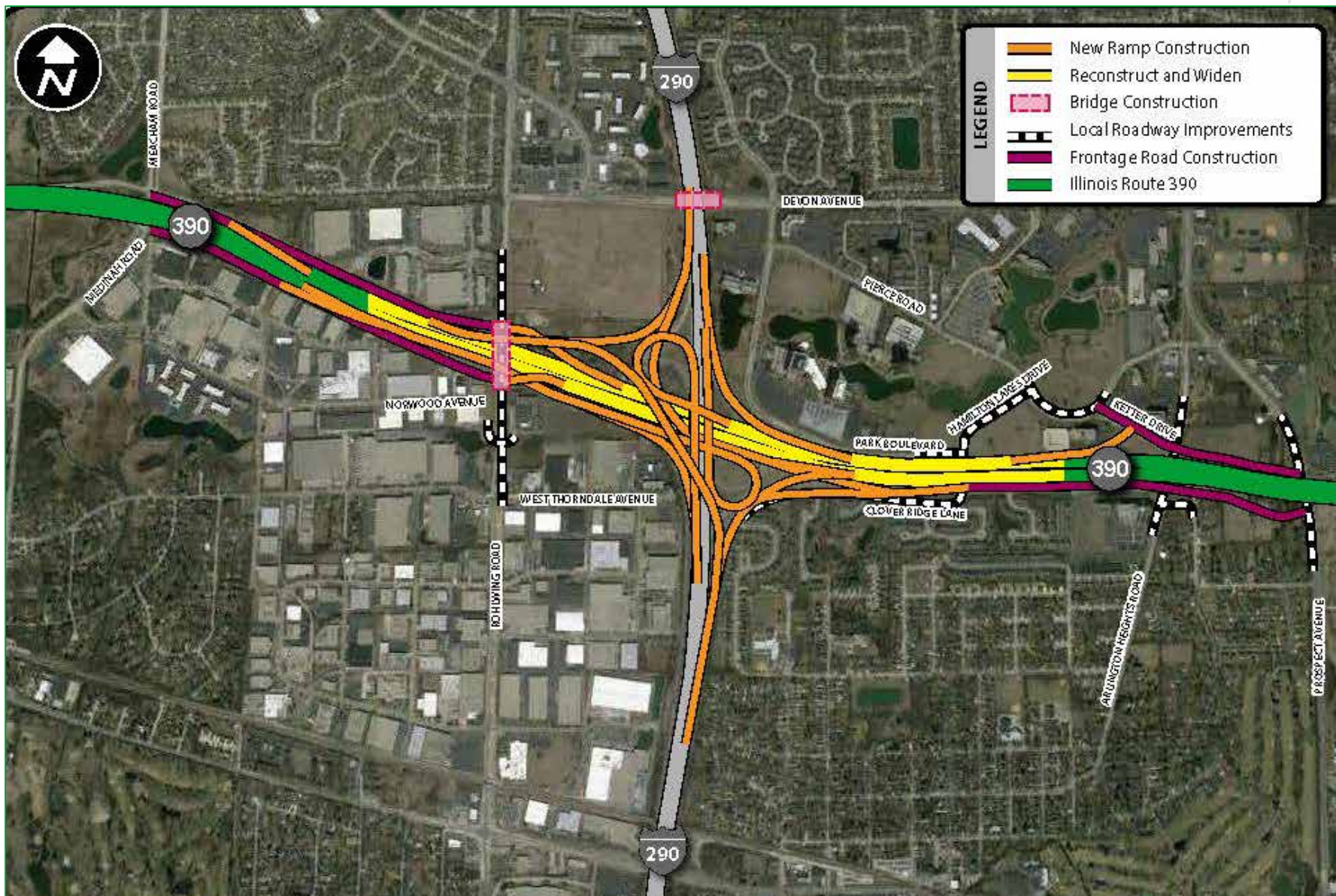
Maintenance of Traffic Overview

- } Whenever possible, the Tollway uses traffic shifts and shoulders to keep as many lanes open during peak hours as were available before construction
- } Temporary off-peak closures will be required along Illinois Route 390, Thorndale Avenue and I-290
- } Access to and from I-290 will be maintained during construction
- } Local streets and arterials will remain open, but short-term lane closures may be required

Illinois Route 390 Project



I-290 Interchange Project



Maintenance of Traffic Highlights

} Illinois Route 390

- } Two lanes of traffic in each direction during peak periods

} Local Roads

- } Traffic reduced to one lane of traffic in each direction

- } Rohlwing Road
- } Wood Dale Road
- } Pierce Road
- } Ketter Drive

- } Short-term closures will be required at

- } Park Boulevard
- } Clover Ridge Lane
- } Central Avenue
- } Sivert Drive (reopening May 2015)
- } Dillon Drive
- } Edgewood Avenue
- } Illinois Route 83

Project Office

- } **Project office**

 - 1555 Mittel Boulevard, Suite D

 - Wood Dale, Illinois

 - Phone: 630-422-1246

 - Open 8 a.m. to 4 p.m., Monday through Friday

- } **Pick up general information about the project**

- } **Make an appointment to meet with engineering staff to ask questions and obtain more detailed information**

Elmhurst Road Interchange Project at I-90



Business and Residential Outreach

- } **Since last LAC meeting**
 - } Local coordination - 10 meetings
 - } Roselle landscaping workshop - January 19
- } **Upcoming**
 - } 2015 outreach meetings – as needed
 - } Hamilton Lakes Business Park – March 17
 - } EOWA Project public open house – late April
 - } 2015 construction
 - } Ongoing design
 - } Land acquisition
 - } Tolling
 - } Other outreach?



DuPage County Update

- } Aesthetics efforts
- } Bicycle and pedestrian plan

Next Steps/Next Meeting

- } **Next meeting**
 - } Timeframe and date
- } **Location**
 - } TBD
- } **Topics**
 - } “Building Green” initiatives
 - } ????



Questions?
