



Elgin O'Hare Western Access Project Local Advisory Committee

October 6, 2014

Agenda

- } **Feedback on local issues**
- } **Project status update**
 - } Design and construction
 - } Rohlwing Road Bridge Project
 - } Construction protocol/winter wrap-up
 - } Project outreach
- } **Project financial plan**
- } **Tollway website – construction contracts**
- } **Project aesthetics**
- } **DuPage County update**
 - } Corridor-wide aesthetics
 - } Potential CMAQ projects
- } **Next steps**

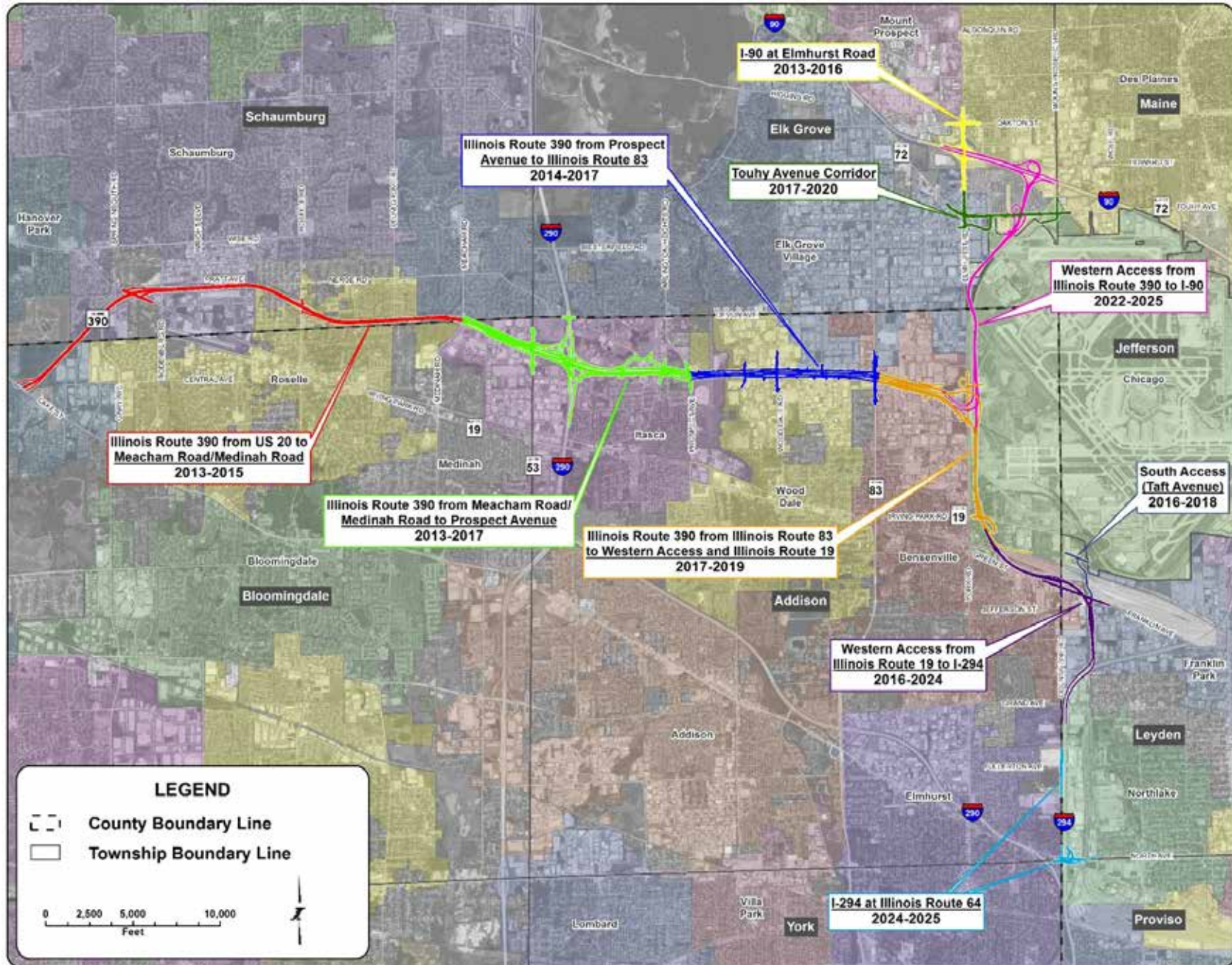
Feedback on Local Issues

- } **What are you hearing?**
 - } Construction operations and traffic flow
 - } Land acquisition
 - } Design features
 - } Development opportunities and trends
 - } Other



Project Status Report

Construction Implementation Timeline



Construction Status – Another New Contract

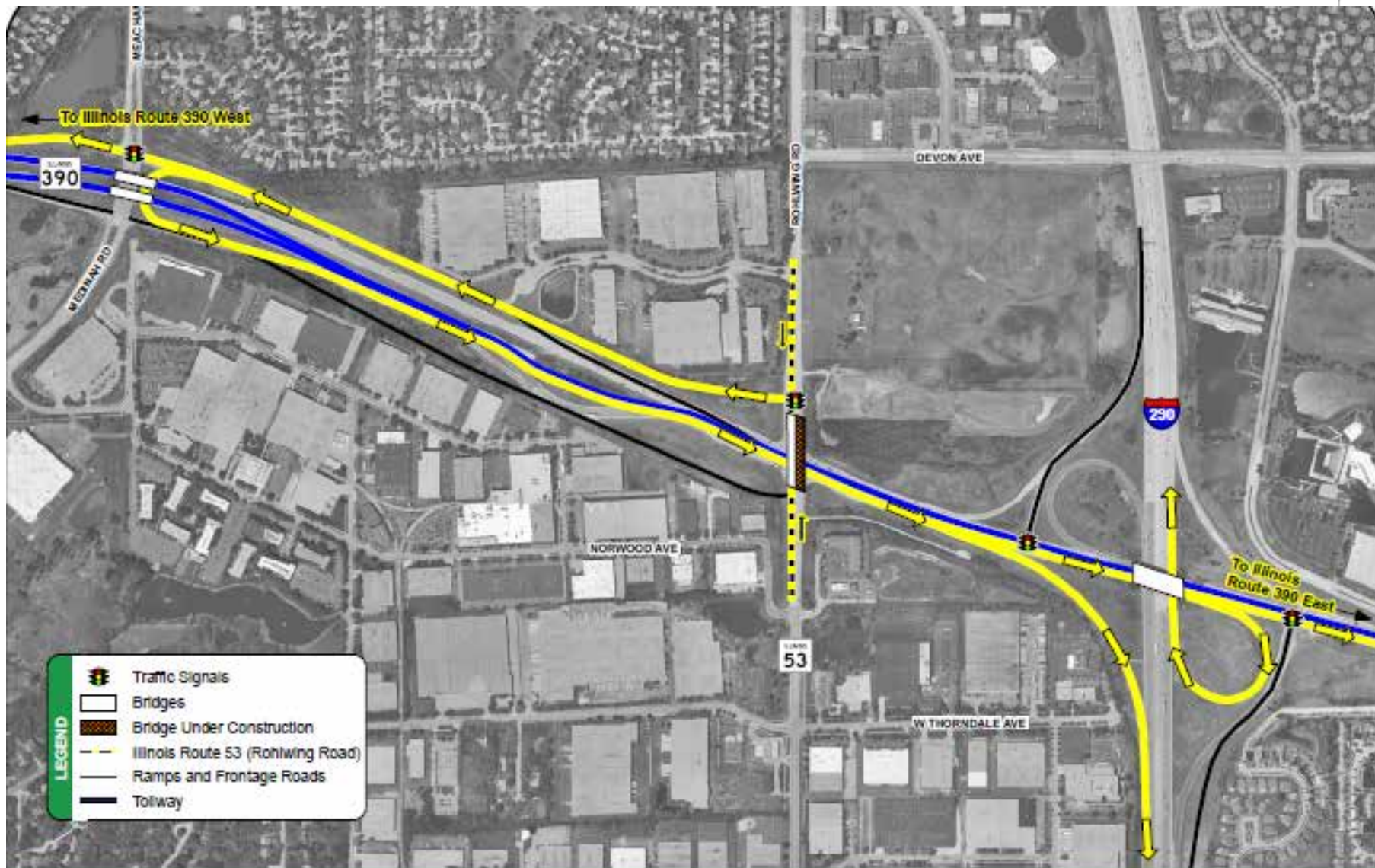


- 1 Toll plaza/ITS - U.S. Route 20 to I-290
- 2 Rehabilitation/widening - Illinois Route 19 to Roselle Road
- 3 Rehabilitation/widening - Roselle Road to Meacham Road
- 4 Noisewalls - westbound Roselle Road to Meacham Road
- 5 Noisewalls - eastbound Roselle Road to Meacham Road
- 6 Roadway reconstruction - Meacham/Medinah to Illinois Route 53
- 7 Rohlwing Road (Illinois Route 53) Bridge
- 8 Devon Avenue Bridge
- 9 I-290 Interchange
- 10 Westbound I-290 ramp to westbound Illinois Route 390
- 11 Hamilton Lakes access improvements
- 12 Salt Creek and Mittel Boulevard Bridges
- 13 Lively Boulevard Bridge and eastbound frontage road
- 14 Advance drainage work - Illinois Route 83 to Willow Creek
- 15 Elmhurst Road/Oakton Street intersection
- 16 Elmhurst Road at I-90 Interchange on I-90
- 17 Elmhurst Road southbound bridge over I-90
- 18 Contract awarded
- 19 Schedule subject to refinement

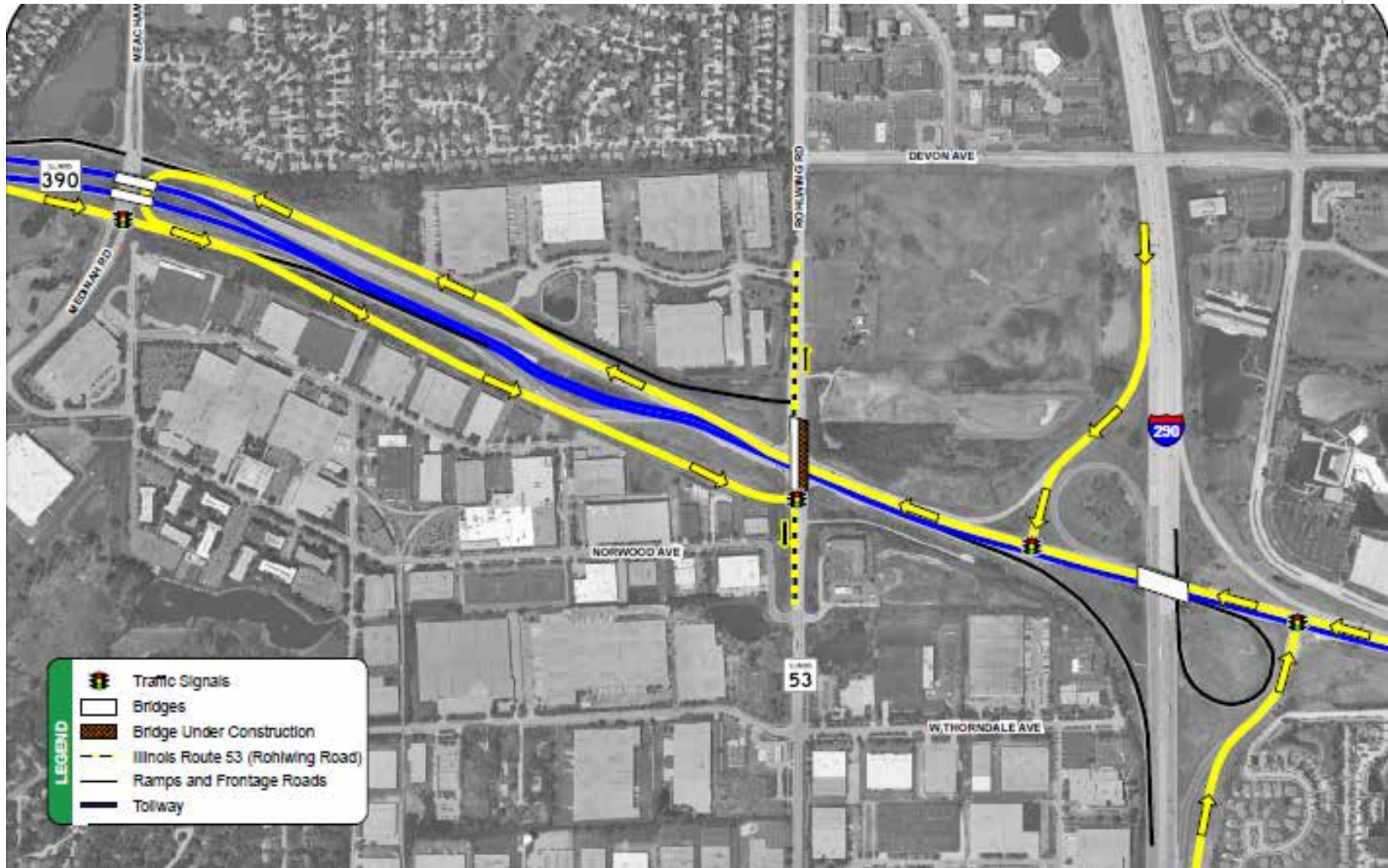
Rohlwing Road Bridge Construction



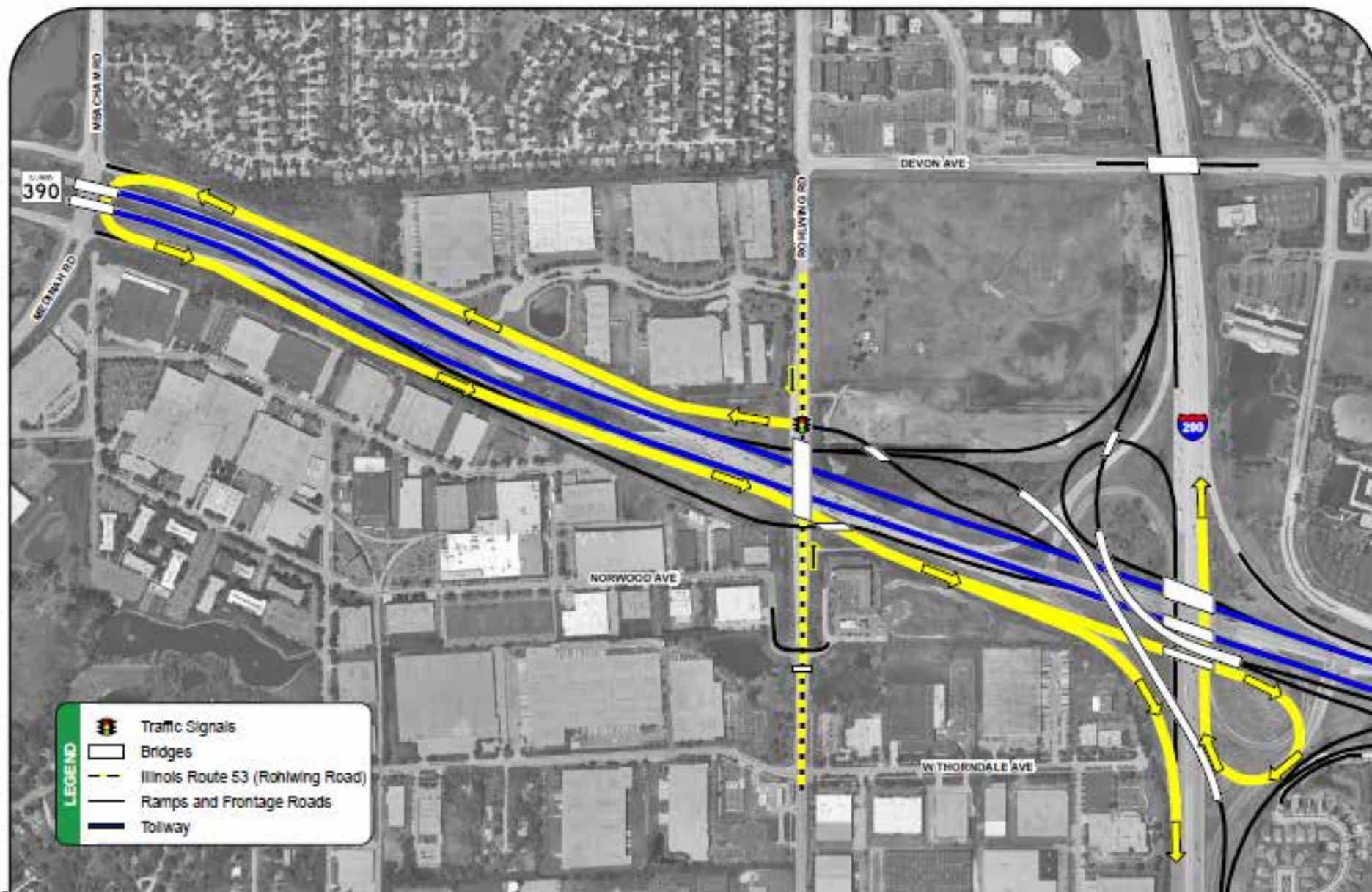
Rohlwing Road to I-290 and Illinois Route 390 – New Traffic Pattern in October



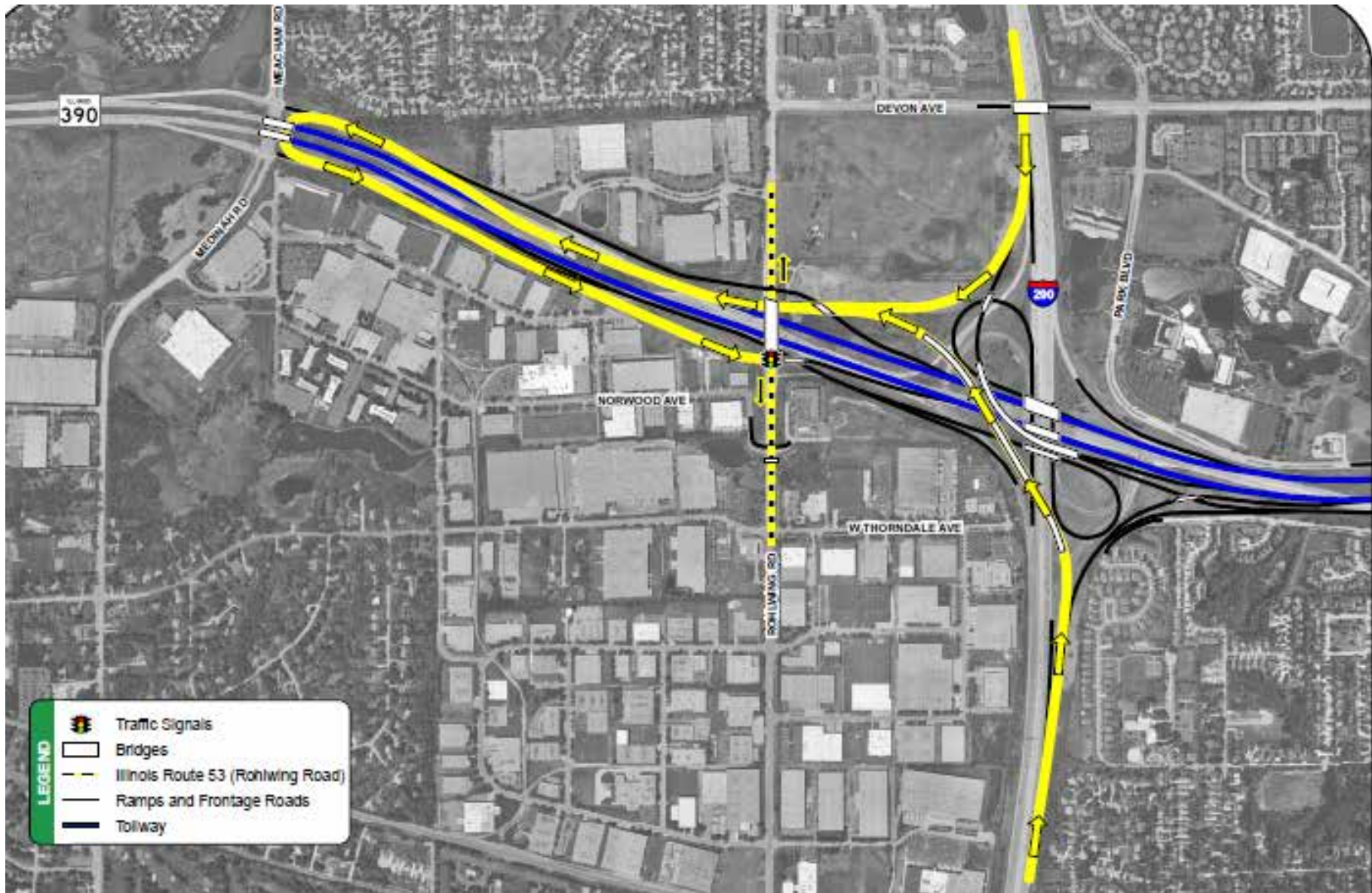
I-290 and Illinois Route 390 to Rohlwing Road New Traffic Pattern in October



Final Travel Movement – Rohlwing Road to I-290



Final Travel Movement – I-290 to Rohlwing Road



How Can The Tollway Get the Word Out?

- } What's the best way to educate motorists of upcoming Rohlwing Road stage change?
 - } Meetings?
 - } Factsheets?
 - } ???

Business and Residential Outreach

- } **Since last LAC meeting**

- } Local community meetings with staff

- } **Upcoming**

- } Outreach meeting with Hamilton Partners in advance of Park Boulevard/Pierce Road/Ketter Drive construction
 - } Itasca neighborhood meeting (Country Club Park)
 - } TBD
 - } Other outreach?



Project Financial Plan

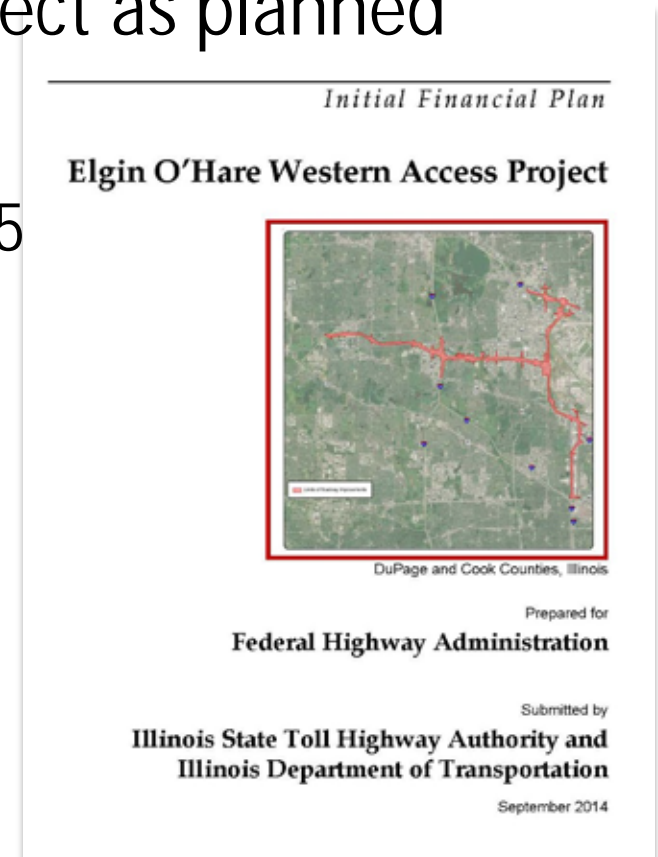
Why Federal Requirements Apply to a Tollway Project

- } Congestion Mitigation Air Quality Grants are federally funded
 - } Three EOWA Projects qualified for CMAQ grants (\$68,739,000 total)
 - } Touhy Avenue and Union Pacific Railroad
 - } I-290 Interchange Project
 - } Elmhurst Road and Touhy Avenue (Illinois Route 72)
- } Before federal funding can be released for the project, FHWA requires a multistage review process
 1. Cost estimate review – First review completed in June 2012, and second review December 2013
 2. Project management plan – approved in December 2013
 3. Financial plan – approved September 2014



Initial Financial Plan

- } **Comprehensive document** - reflects the project's cost estimate and revenue structure
- } **Provides a reasonable assurance** to FHWA that there will be sufficient financial resources available to implement and complete the project as planned
- } **Updated annually**
 - } First annual update December 31, 2015



Initial Financial Plan

} Consists of five main sections

1. **Cost estimate** - total project cost is presented in year of expenditure dollars
2. **Implementation plan** - project schedule is presented
3. **Financing and revenues** - presented by funding source
4. **Cash flow** - an annualized presentation of income and spending to illustrate how periodic bills will be paid
5. **Risk identification and mitigation factors**



Funding To Date From Others

} \$111 million identified under the leadership of DuPage County

Source	Amount
Federal: CMAQ Award	\$68,739,000
Cook County Local Match: CMAQ Award	\$8,685,000
In-Kind Contributions (Anticipated)	\$33,713,020
Committed Funding	\$111,137,020

In-Kind Contributions		
Agency	Contribution	Value
Cook County	Design and Construction Engineering for Touhy Avenue	\$6,150,000
DuPage County	Thorndale Avenue right-of-way	\$25,000,000
Village of Franklin Park	Design work for proposed I-294 Industrial Park drainage improvements	\$397,600
City of Northlake	Final design of I-294 at IL 64	\$2,165,420
Total Value of In-Kind Contributions		\$33,713,020

The project is in the early stages of implementation. Under the leadership of DuPage County the project team anticipates that by 2025 it will be able to secure additional funding (e.g., CMAQ, TIGER) or additional in-kind contributions (e.g., right-of-way or final design) for a total of \$300 million contribution from local and other funding sources.



Tollway Website – Construction Contract Information

Illinois Tollway Website Construction Contract Resources



The screenshot shows the Illinois Tollway website's navigation menu with 'Doing Business' and 'Construction and Engineering' highlighted. The main content area is divided into two columns:

Doing Business

- Construction and Engineering
 - Construction Bid Calendar
 - Construction Bidding and Letting
 - Awards and Change Orders
 - Construction Drawings
 - Construction Frequently Asked Questions
 - Construction Permits
 - Consultant Contract Forms
 - Consultant Invoicing Forms
 - Manuals
 - Policies and Guidelines
 - Professional Services Bulletin
 - Specifications and Special Provisions
 - Procurement Reform
 - Research Reports
 - Training Programs
 - Approved Materials List
 - Construction Contract Meeting Materials
- Goods and Services
- Diversity Programs
- Tower and Fiber Leasing
- Towing and Vehicle Recovery
- Auctions and Real Estate
- Information Signage Guidelines
- Enterprise Resource Planning

Construction and Engineering

Introduction

This section serves as a central repository for Tollway engineering standards and publications. Documents found on this site will principally be used by Tollway project managers to guide design section engineers and construction managers during design development and contract implementation. The most current and up-to-date documents adopted by the Tollway will be posted.

The Illinois Tollway hosted a training webinar on Thursday, July 12, 2012 for contractors who wanted to learn more about how to do business with Tollway. Organizations involved in the heavy-highway construction industry who are interested in having a role in the Tollway's new 15-year, \$12 billion capital program, were invited to participate.

Documents and Resources

This section is designed to be simple and user-friendly. Documents are divided into these main sections:

Contractor Resources	Consultant Resources
Letting and Bidding	Consultant Contract Forms
Manuals	Consultant Invoicing Forms
Contractor Forms	Manuals
Construction Bid Calendar	Bulletins
Online Plan Room	Standard Drawings
Approved Materials and CCDD Facilities Lists	Mentor/Protégé Agreements on Awarded Contracts
Construction Contract Meeting Materials	
Joint Resources	
Construction and Professional Services Awards and Change Orders	
Active Construction and Professional Services Contracts	
Standard Specifications and Special Provisions	
A Forms and AC Forms	
Professional Services Bulletin	
Frequently Asked Questions	
Permit and Utility Information	

Illinois Tollway Website - Contracts



CONSTRUCTION CONTRACT TRACKER

Construction/Planning

- Capital Programs
- Projects By Roadway
 - Jane Addams Memorial Tollway (I-90)
 - Reagan Memorial Tollway (I-88)
 - Tri-State Tollway (I-64/I-294/I-80)
 - Veterans Memorial Tollway (I-355)
 - Elgin O'Hare Western Access (EOWA)
 - Tollway Cases
 - Construction Contract Tracker
- Daily Lane Closures
- Community Outreach
- Environment
- Work Zone Safety

Construction Contract Tracker

The Illinois Tollway is committed to sharing information regarding construction. Construction Contract Tracker provides public access to current contract records.

[Explanation of Terms]

no map

Contract Name and Number		
Tri-State Tollway (I-94/I-294/I-80) Construction Projects		
Welland Mitigation	I-07-5230RR	
I-294/8-57 Interchange - Flyover Ramp Construction Ramp B	I-12-4066	
I-294/8-57 Interchange - Southbound Ramps	I-12-4067	
I-294/8-57 Interchange - Northbound Ramps	I-12-4087	
I-294 Interchange Ramp Reconstruction - Belvidere Road and Lake Street RR	I-12-4088	
I-294 Ramp Reconstruction - I-90/I-190/River Road	RR-12-4089	
I-294 Ramp Reconstruction - I-55	RR-12-4090	
I-294 147th Street Interchange Ramps X & M	I-13-4121	
I-294/I-94/Edens Spur Corridor Repairs and Bridge Rehabilitation	RR-13-4125	
I-294/8-57 Pavement, Drainage, Curb, Sidewalk Repairs on Local Roads	I-13-4141	
Elgin O'Hare Western Access		
Elgin O'Hare Western Access Rohlwing Road Overpass	I-13-4600	\$25,416,537 no map
Reconstruct and Widen Elgin O'Hare Expressway - Meacham Road to Rohlwing Road	I-13-4601	\$30,540,953 no map
Rehabilitate and Widen Existing Elgin O'Hare Expressway - Irving Park Road to Roselle Road	I-13-4602	\$44,967,875 no map
Reconstruct and Widen Existing Elgin O'Hare Expressway - Roselle Road to Meacham Road	I-13-4603	\$16,272,007 no map
Elgin O'Hare Western Access Eastbound NoiseWall	I-13-4604	\$2,342,768 no map
Elgin O'Hare Western Access Westbound NoiseWall	I-13-4605	\$2,014,776 no map
Elgin O'Hare Western Access I-290WB Flyover Bridge	I-13-4606	\$36,693,793 no map
Elgin O'Hare Western Access - I-290 & Rohlwing Road Interchange Ramps	I-13-4607	\$63,973,529 no map
Elgin O'Hare Western Access - Devon Avenue Bridge Reconstruction	I-13-4608	\$8,100,949 no map
Elgin O'Hare Western Access - Elmhurst Road Interchange at I-90	I-13-4616	\$4,667,780 no map
Elgin O'Hare Western Access - Elmhurst Road Diverging Diamond Interchange & Northbound Bridge	I-13-4618	\$29,837,596 no map
Pine Dunes Forest Preserve Wetlands Enhancement and Restoration	I-13-4619	\$9,335,000 no map
EOWA - Advanced Drainage Work IL RT 83 to Willow Creek	I-13-4627	\$4,261,306 no map
EOWA - Toll Plaza Construction & ITS Installation	I-13-4628	\$21,673,743 no map
Elgin O'Hare Western Access - Construction of IL RL 390 Bridges over Lively Blvd.	I-13-4630	\$14,670,337 no map

Illinois Tollway Website - Contracts

MOVE
ILLINOIS



Elgin O'Hare Western Access		
Elgin O'Hare Western Access Rohlwing Road Overpass I-13-4600	\$25,416,537	no map
Reconstruct and Widen Elgin O'Hare Expressway - Meacham Road to Rohlwing Road I-13-4601	\$30,540,953	no map

Rehabilitate and Widen Existing Elgin O'Hare Expressway - Irving Park Road
I-13-4602

Reconstruct and Widen Existing Elgin O'Hare Expressway - Roselle Road
I-13-4603

Elgin O'Hare Western Access Eastbound NoiseWall
I-13-4604

Elgin O'Hare Western Access Westbound NoiseWall
I-13-4605

Elgin O'Hare Western Access I-290WB Flyover Bridge
I-13-4606

Elgin O'Hare Western Access - I-290 & Rohlwing Road Interchange Ramp
I-13-4607

Elgin O'Hare Western Access - Devon Avenue Bridge Reconstruction
I-13-4608

Elgin O'Hare Western Access - Elmhurst Road Interchange at I-90
I-13-4616

Elgin O'Hare Western Access - Elmhurst Road Diverging Diamond Interch Northbound Bridge
I-13-4618

Pine Dunes Forest Preserve Wetlands Enhancement and Restoration
I-13-4619

EOWA - Advanced Drainage Work IL RT 83 to Willow Creek
I-13-4622

EOWA - Toll Plaza Construction & ITS Installation
I-13-4628

Elgin O'hare Construction Projects

Contract Number:	I-13-4601		
Project Description:	Reconstruct and Widen Elgin O'Hare Expressway - Meacham Road to Rohlwing Road		
Budget:	\$32,068,000	Updated:	8/28/2014
Notice To Proceed:	4/3/2014	Project Phase:	Construction
Contract Start Date:	4/3/2014	Route:	Elgin O'Hare (IL390)
Contract Completion Date:	10/30/2015	Location:	Milepost 11.1 to 12.0
Contract Award Amount:	\$30,540,953	County:	DuPage
Contract Authorized Amount*:	\$30,570,583	Prime Contractor:	Lorig Construction Company
Board Approval Date:	2/27/2014	Earned To Date:	\$6,791,636
DBE Advertised Goal:	18.00%	Percent Complete:	22.216%







Subcontractor List^

Name:	Diversity Program:	Diversity Certifications:
A & A Cartage Inc.	No	
A-K Underground, Inc.	No	
Clausen Structures, Inc.	No	
Clean Cut Tree Service, Inc.	No	
CMC Paving Solutions	No	
Contech Engineered Solutions	No	
Crown Painting, Inc.	No	
Del Toro Landscaping, Inc.	Yes	D/MBE
Evergreen Supply Co.	Yes	D/WBE
Gateway Construction Company, Inc.	No	
GFS Construction LLC - a division of Aldridge Group	No	
Homer Tree Service, Inc.	No	
Industrial Steel Construction, Inc	No	
James D Fiala Paving Co Inc	No	
JNS, Inc.	Yes	WBE
John Burns Construction Company	No	
K-Five Construction Corporation	No	
Lindahl Brothers Inc.	No	
Maintenance Coatings Co.	No	
Martinez Underground, Inc.	Yes	D/MBE
Midwestern Electric Co., Inc.	Yes	D/MBE
Northern Contracting Inc	No	

Bid Letting and Opening Schedules

**Bid Letting
and Opening
Schedules**

Illinois Tollway Projects

	Tri-State Tollway (I-294)
	Jane Addams Memorial Tollway (I-90)
	Reagan Memorial Tollway (I-88)
	Veterans Memorial Tollway (I-355)
	Elgin-O'Hare (EO)
	Systemwide (S/W)



Cost Magnitude Key:

A	- \$5 - \$10M
B	- \$10 - \$25M
C	- \$25 - \$50M
D	- \$50 - \$75M
E	- \$75 - \$100M
F	- > \$100M
U	- \$0 - \$5M Unbundled
U / SA	- Set Aside for Small Businesses

Other Agency Major Projects

	IDOT
	OMP & O'Hare/Midway CIP

CONSTRUCTION CONTRACT BID LETTING SCHEDULE (Sorted by Bid-Opening)

CHICAGO AREA MAJOR TRANSPORTATION AGENCIES

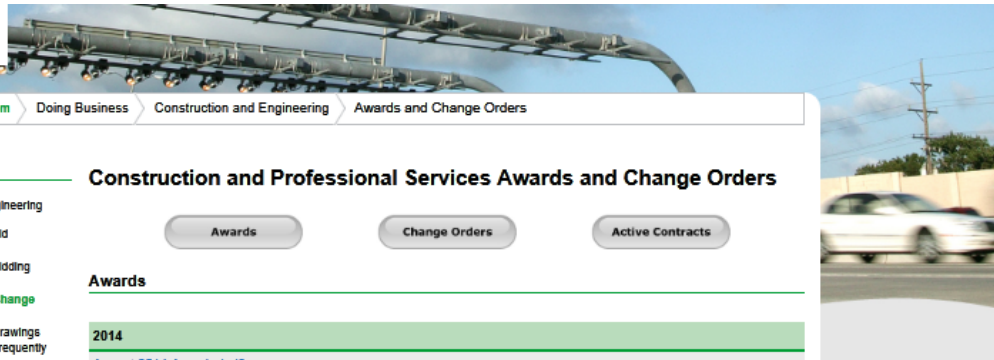
Located on *Illinois Tollway Website* under *Doing Business* www.illinoistollway.com

Information in this document is subject to change.

ROUTE	TYPE OF WORK	PROJECT DESCRIPTION	PROJECT NUMBER	ADVERTISE DATE	BID OPENING DATE	ESTIMATED BOARD APPROVAL	ESTIMATED NOTICE TO PROCEED	CONTRACT COMPLETION DATE	COST MAGNITUDE (See key)
S/W	Signage	Systemwide Exit #and Signage I-94 & I-294 (M.P. 0 to 30) & (M.P. 0 to 52.75)	5685R	12-Jun-14 A	8-Jul-14 A	24-Jul-14 A	4-Oct-14	1-Aug-15	U
90	Waterline	NSMJAWA Watermain Reloc. West of Roselle Rd to West of Elmhurst Rd	4180	12-Jun-14 A	7-Aug-14 A	28-Aug-14 A	17-Sep-14 A	22-Jun-15	C
S/W	Signage	Signage Improvements along I-294 (MP 0 to 25)	5695	21-Jul-14 A	14-Aug-14 A	28-Aug-14 A	3-Nov-14	4-Sep-15	U
EO	Drainage	Advance Drainage IL 83 to Willow Creek	4627	10-Jul-14 A	14-Aug-14 A	28-Aug-14 A	28-Oct-14	06-Oct-15	U
IDOT	Miscellaneous	IDOT Bid Letting			19-Sep-14 A				



Contract Information



www.illinoistollway.com > Doing Business > Construction and Engineering > Awards and Change Orders

Active Contracts

Doing Business

Construction and Engineering

- Construction Bid Calendar
- Construction Bidding and Letting
- Awards and Change Orders
- Construction Drawings
- Construction Frequently Asked Questions
- Construction Permits
- Consultant Contract Forms
- Consultant Invoicing Forms
- Manuals
- Policies and Guidelines
- Professional Services Bulletin
- Specifications and Special Provisions
- Procurement Reform Research Reports
- Training Programs
- Approved Materials List
- Construction Contract Meeting Materials

- Goods and Services
- Diversity Programs
- Towing and Fiber Leasing
- Towing and Vehicle Recovery
- Auctions and Real Estate
- Information Signage Guidelines
- Enterprise Resource Planning

Construction and Professional Services Awards and Change Orders

[Awards](#) [Change Orders](#) [Active Contracts](#)

Awards

2014

- [August 2014 Awards \(pdf\)](#)
- [July 2014 Awards \(pdf\)](#)
- [June 2014 Awards \(pdf\)](#)
- [May 2014 Awards \(pdf\)](#)
- [April 2014 Awards \(pdf\)](#)
- [March 2014 Awards \(pdf\)](#)
- [February 2014 Awards \(pdf\)](#)
- [January 2014 Awards \(pdf\)](#)

Change Orders

2014

- [September 2014 Change Orders \(pdf\)](#)
- [July 2014 Change Orders \(pdf\)](#)
- [May 2014 Change Orders \(pdf\)](#)
- [August 2014 Change Orders \(pdf\)](#)
- [January Through March 2014 Change Orders \(pdf\)](#)

Archive

- [2013 - All Change Order Notices](#)
- [2012 - All Change Order Notices](#)
- [2011 - All Change Order Notices](#)
- [2009 - All Change Order Notices](#)
- [2008 - All Change Order Notices](#)
- [2006 - All Change Order Notices](#)
- [2005 - All Change Order Notices](#)
- [2004 - All Change Order Notices](#)



Active Construction Contracts

as of 6/25/2014

Board Date	Contract Number	Vendor	Award Amount	Description	Contract State	Final Pymt	Compl. Date
05/22/14	I-14-4179	Dunnet Bay Construction Co.	\$4,735,760	Tyrell Road Bridge Widening and Reconstruction, Over Jane Addams Memorial Tollway (I-90) (Bridge No. 629), M.P. 50.7	Award	No	06/26/15
05/22/14	I-14-4183	William Charles Construction Company, LLC	\$1,396,425	ITS Extension and Dynamic Message Sign, Jane Addams Memorial Tollway (I-90) M.P. 15.6 to M.P. 17.9 and I-39 Northbound M.P. 121.2	Award	No	06/12/15
05/22/14	I-14-5693	Lorig Construction Company	\$4,722,164	Church Road Over I-88 Bridge Removal, Replacement, and Miscellaneous Structural Repairs, Reagan Memorial Tollway (I-88) M.P. 92.4 to M.P. 136.9, Veterans Memorial Tollway (I-355) M.P. 15.6 to 17.0, and Tri-State Tollway (I-294) M.P. 37.0 to 37.25	Award	No	05/04/15
05/22/14	RR-12-8103	Electri-Comm, Inc.	\$399,284	Automatic Transfer & Bypass-Isolation Switch Replacement, Jane Addams Memorial Tollway (I-90), Tri-State Tollway (I-294), and Veterans Memorial Tollway (I-355) Various Locations	Award	No	12/05/14
04/24/14	I-13-4144R	Kenny-Kraemer, Joint Venture	\$75,412,945	Bridge Reconstruction and Widening, Fox River Bridge (Bridge No. 549 & 550), Jane Addams Memorial Tollway (I-90) M.P. 55.7 (Fox River)	Obligated	No	05/25/17
04/24/14	RR-14-4182	John Burns Construction Company	\$632,778	M1 Utility Relocation, Maintenance Yard M-1 Building at I-294, Tri-State Tollway, M.P. 12.0	Approved	No	08/31/14
04/24/14	I-14-4632	Fox Excavating, Inc.	\$2,328,180	Building Removal, Elgin O'Hare Western Access Tollway, Various Locations on IL-390 and Western Access	Approved	No	12/31/16
04/24/14	RR-14-5692	F H Paschen, S.N. Nielsen & Assoc., LLC	\$24,473,925	Grand Avenue Ramp Construction and Systemwide Various Repairs, Tri-State Tollway (I-94/I-294) and Veterans Memorial Tollway (I-355), M.P. 27.0 to M.P. 4.5 (I-94), M.P. 49.0 to M.P. 40.2 (I-294), M.P. 18.3 (I-355)	Obligated	No	06/19/15
03/27/14	I-13-4157	Allied Landscaping Corporation	\$1,267,014	Landscape Planting, I-57 at I-294 Interchange, M.P. 6.3 to M.P. 8.8, and M.P. 2.9 to M.P. 22.2	Obligated	No	10/30/15
03/27/14	RR-13-4170	K-Five Construction Corporation	\$8,084,948	Tri-State Oases Pavement Rehabilitation; Lake Forest (I-94) M.P. 18.1; Hinsdale (I-294) M.P. 25.0; Lincoln (I-294) M.P. 0.8; O'Hare (I-294) M.P. 37.7	Obligated	No	10/15/14
03/27/14	RR-13-4171	R W Dunteman Company	\$4,729,620	Belvidere and DeKalb Oases Pavement Rehabilitation, Belvidere (I-90) Jane Addams Memorial	Obligated	No	10/15/14

Active Contracts

- [Active Contracts by Type - Construction](#)
- [Active Contracts by Type - Professional Services](#)





Project Aesthetics

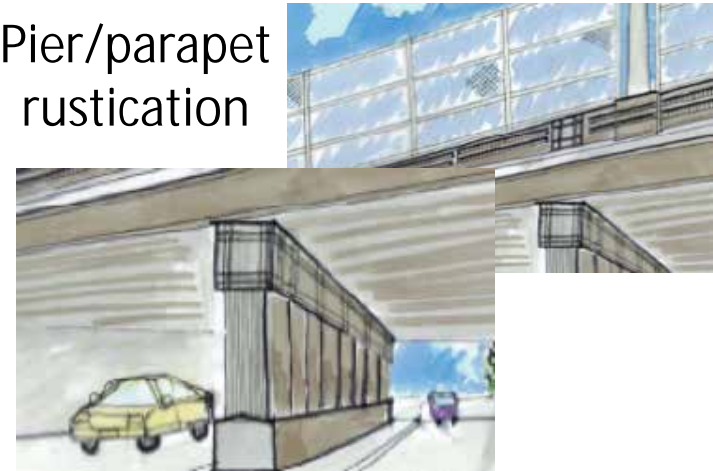
Tollway Aesthetic Commitments - Baseline

Steel girder paint

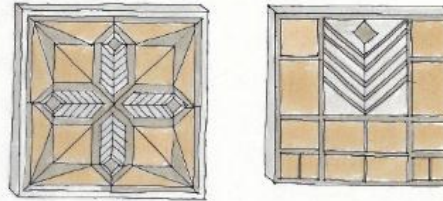


Black traffic signals

Pier/parapet rustication



Round pier – flyover



Mechanically attached corridor identifier on local bridges (design to be determined)



Landscape



Leaf formliner on retaining walls



Baseline retaining/noisewall formliner

Illinois Route 390 Noisewall



Example Tollway Applications



Typical view of Illinois Tollway crossing over local road



Typical view of local road crossing over Illinois Tollway

Devon Avenue Bridge South Railing



Devon Avenue Bridge – Complete South Half



Summary of Tollway Aesthetic Commitments and Additional Upgrade Opportunities



Project Element	Tollway Aesthetic Commitments	Potential Upgrades by Others
Structures		
Bridge Structures	Prairie style rustication pattern on parapet Fluted rustication on piers and pier caps Bridge sizing to accommodate multi-modal uses Improvements to existing bridges (clean and seal coat) Mechanically attached corridor identifiers on local bridges	Bridge signage on Tollway over local road bridges
Bridge Railings		Upgraded painted bridge fencing or decorative railing
Bridge Lighting	LED underpass lighting	Bridge accent lighting
Retaining Walls	Limestone block pattern and decorative leaf pattern	
Noisewalls	Ashlar stone pattern	
Landscaping		
Mainline and Crossroads	Enhanced tree replacement	<i>Gateway landscaping treatments, median landscaping</i>
Roadway		
Traffic Signals	Black painted traffic signal equipment	
Intersection Area Upgrades		Stamped medians/crosswalks, <i>Planters, Street furniture</i>
New Sidewalks/Shared Use Paths	Grading at proposed locations, where feasible	<i>Construction of new sidewalks and/or shared use paths along local roads</i>
Fencing		<i>Black or ornamental fencing</i>
Roadway Lighting	Replacement of existing lighting where impacted with LED	<i>New standard or ornamental local road lighting</i>
Signage		<i>Illuminated roadway signs, destination signs, or other identifiers</i>
Stand Alone Identifiers		<i>Community sign monuments (outside Tollway/IDOT ROW)</i>

Design and construction of aesthetic upgrade treatments could be phased in over time by others following completion of Tollway construction.

Locally – Funded Proposed Aesthetic Upgrade Locations



Locally – Funded Proposed Aesthetic Upgrade Locations

- } **Rohlwing Road:** black vinyl bridge fencing
- } **Devon Avenue:** decorative bridge fencing; bridge upgrades (concrete staining, formliner, decorative columns on top of parapet); stand-alone identifiers (separate from EOWA)
- } **Park Boulevard and Park (Hamilton Lakes), Ketter, Pierce:** Leaf formliner on noisewall at I-290 and Illinois Route 390; LED illuminated signage; stamped concrete in median
- } **Wood Dale Road:** upgraded bridge fencing
- } **Lively Boulevard:** City of Wood Dale/Elk Grove Village signage



DuPage County Update

- } Corridor-wide aesthetics
- } Congestion Mitigation and Air Quality (CMAQ) funding

Next Steps/Next Meeting

- } **Next meeting**
 - } December 8, 2014???

- } **Location**
 - } TBD

- } **Topics**
 - } ???



Questions?
