



Elgin O'Hare Western Access Project Local Advisory Committee

August 11, 2014

Agenda

- } **Feedback on local issues**
- } **Project status update**
 - } Design and construction
 - } Land acquisition
 - } Project outreach
- } **DuPage County**
 - } Congestion Mitigation and Air Quality (CMAQ) funding locations
 - } Illinois Transportation Enhancement Program (ITEP) update
- } **Pace**
 - } Update by Pace
- } **Next steps**

LAC Membership

- } **Welcome new member**
 - } Schaumburg Township
- } **Vacant positions**
 - } City of Des Plaines
 - } Elk Grove Township
 - } Leyden Township



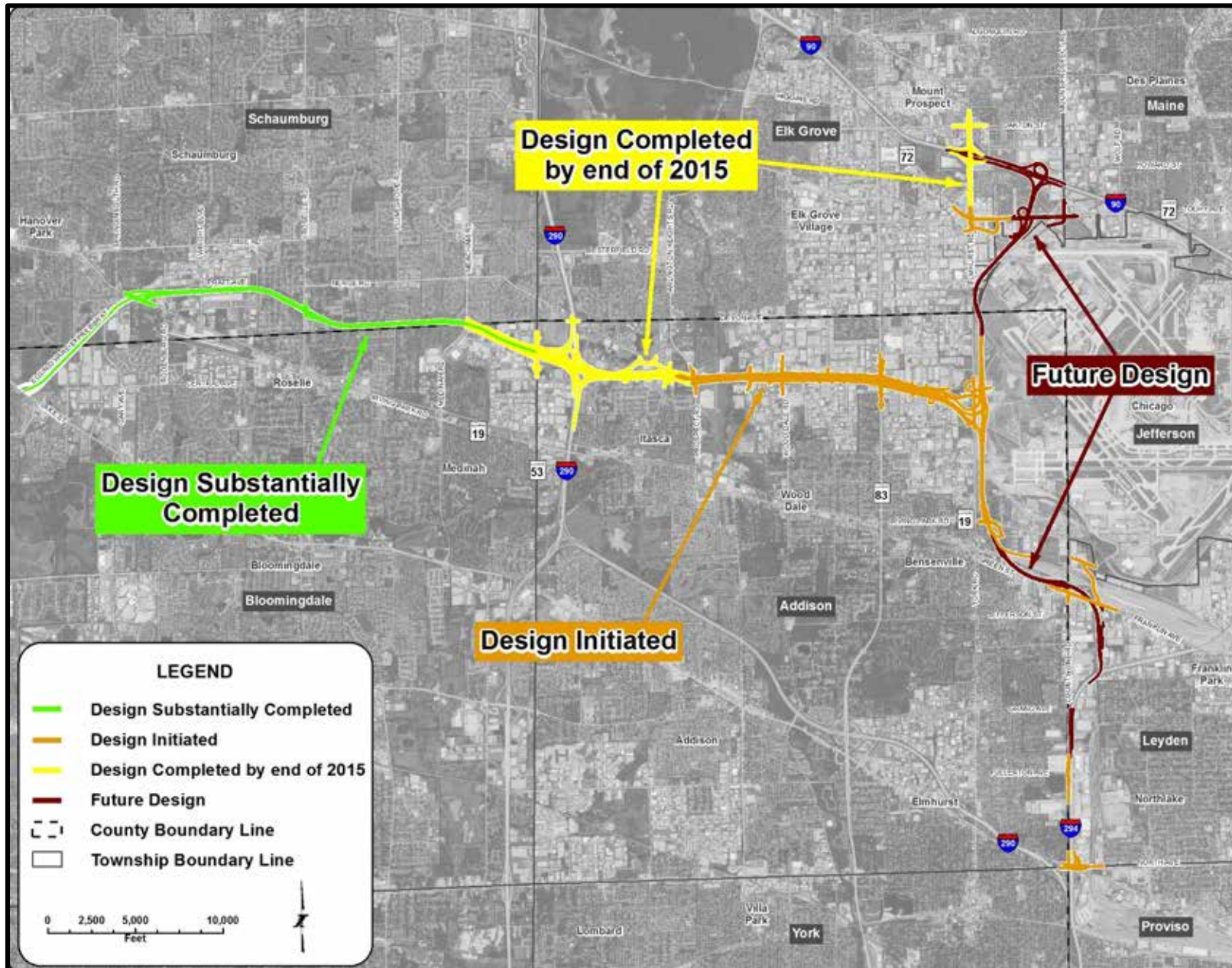
Feedback on Local Issues

- } **What are you hearing?**
 - } Construction operations and traffic flow
 - } Land acquisition
 - } Design features
 - } Development opportunities and trends
 - } Other



Project Status Report

Design Status



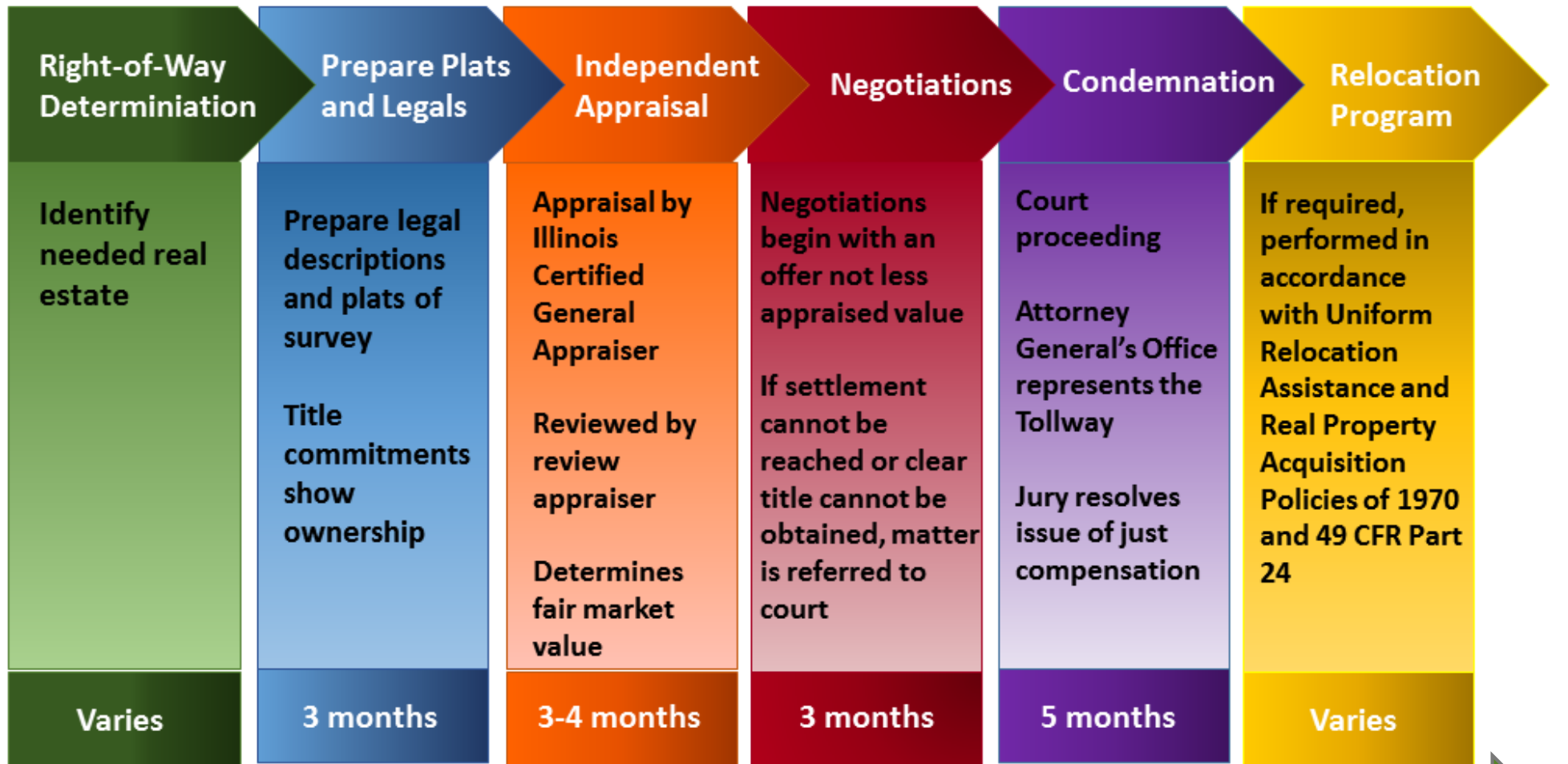
Land Acquisition

Ongoing acquisition efforts include

- } Land acquisition required for 2013 to 2015 construction**
 - } Illinois Route 390/Thorndale Avenue corridor
 - } I-90/Elmhurst Road Interchange
 - } Taft Avenue

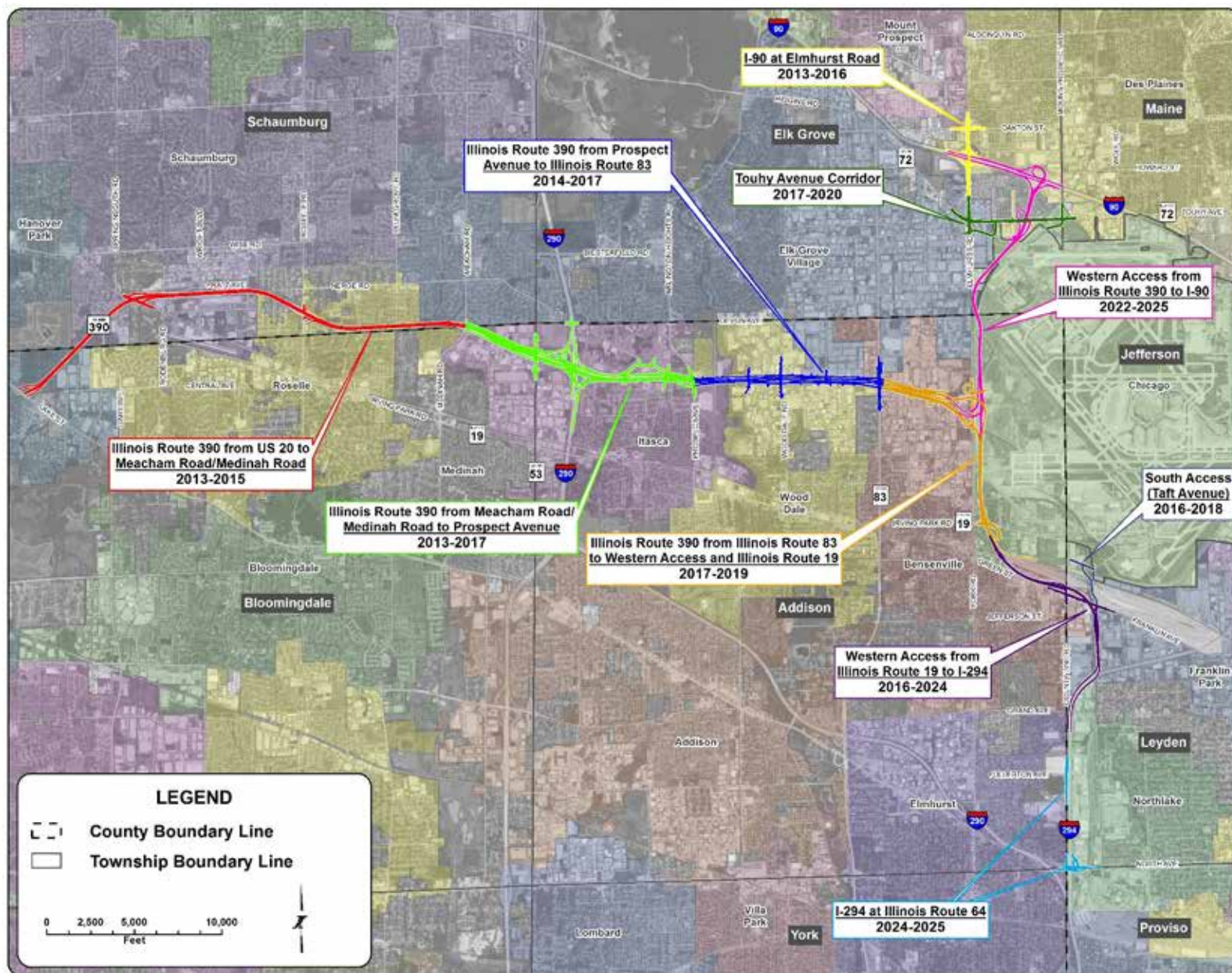
- } Advance land acquisition along the north-south corridor**
 - } O'Hare International Airport
 - } Canadian Pacific Railroad
 - } Franklin Park early drainage
 - } I-294/North Avenue Interchange
 - } Relocations

Tollway Land Acquisition Process

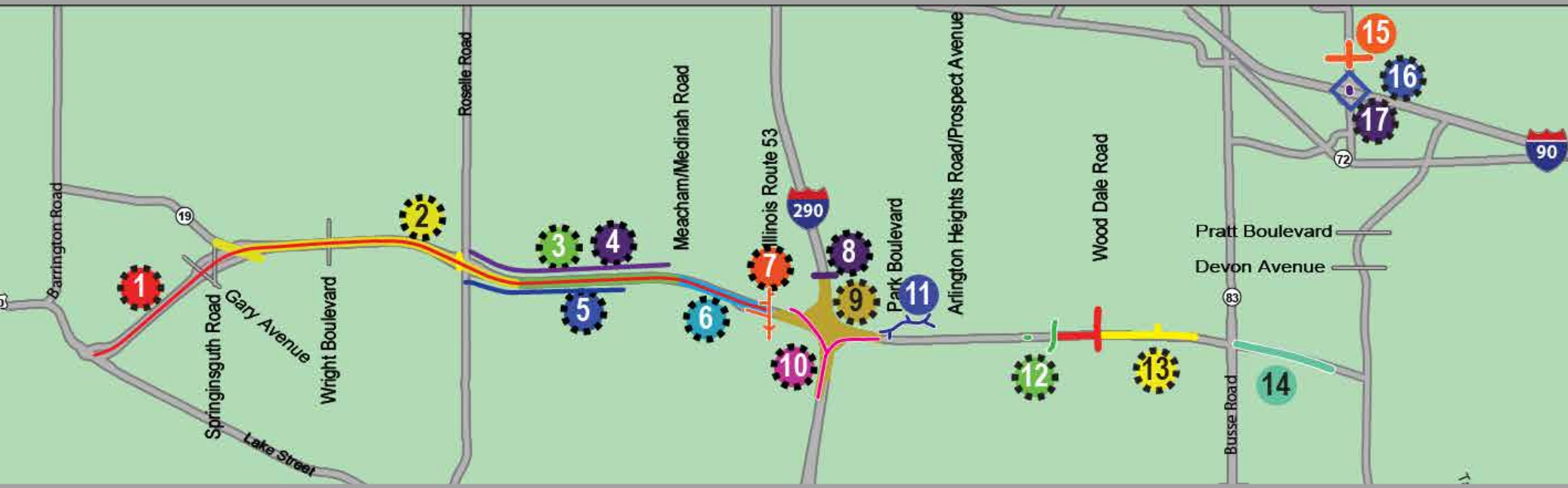


Overall acquisition 15 to 18 months; complex relocations may exceed this timeframe

Construction Implementation Timeline



Construction Status – Three New Contracts



- 1 Toll plaza/ITS - U.S. Route 20 to I-290
- 2 Rehabilitation/widening - Illinois Route 19 to Roselle Road
- 3 Rehabilitation/widening - Roselle Road to Meacham Road
- 4 Noisewalls - westbound Roselle Road to Meacham Road
- 5 Noisewalls - eastbound Roselle Road to Meacham Road
- 6 Roadway reconstruction - Meacham/Medinah to Illinois Route 53
- 7 Rohlwing Road (Illinois Route 53) Bridge
- 8 Devon Avenue Bridge
- 9 I-290 Interchange
- 10 Westbound I-290 ramp to westbound Illinois Route 390
- 11 Hamilton Lakes access improvements
- 12 Salt Creek and Mittel Boulevard Bridges
- 13 Lively Boulevard Bridge and eastbound frontage road
- 14 Advance drainage work - Illinois Route 83 to Willow Creek
- 15 Elmhurst Road/Oakton Street intersection
- 16 Elmhurst Road at I-90 Interchange on I-90
- 17 Elmhurst Road southbound bridge over I-90
- Contract awarded

Business and Residential Outreach

} **Since last LAC meeting**

- } Itasca property owners affected by Park Boulevard closure
- } Bensenville Connects to Businesses Meeting with Tollway DCEO and IDOT
- } Local community meetings with staff

} **Upcoming**

- } TBD
- } Other outreach?



DuPage County Update

- } **Illinois Transportation Enhancement Program (ITEP)**
 - } Application process
 - } Corridor-wide aesthetic enhancements
 - } Collaboration with communities
- } **Congestion Mitigation and Air Quality (CMAQ) funding**
 - } Potential candidate projects
- } **TIGER Grant**
 - } Current application
 - } Goals and objectives for next cycle

Pace Suburban Bus Service

- } How the EOWA Project fits into Pace's long term planning
- } Potential bus rapid transit (BRT) or express bus service in corridor



Next Steps/Next Meeting

- } **Next meeting**
 - } TBD

- } **Location**
 - } TBD

- } **Topics**
 - } Sustainability



Questions?
